

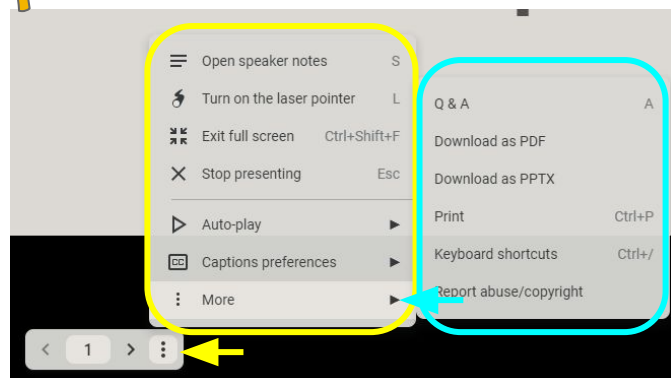
# EdTech Bytes

## Google Slides Update

### NEW Presenter Toolbar

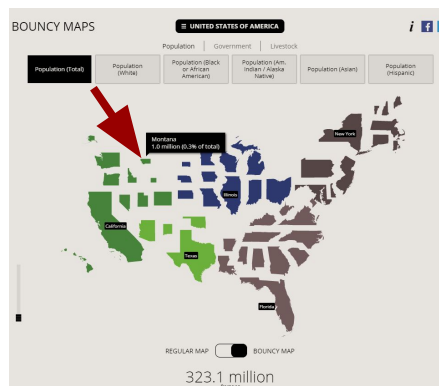
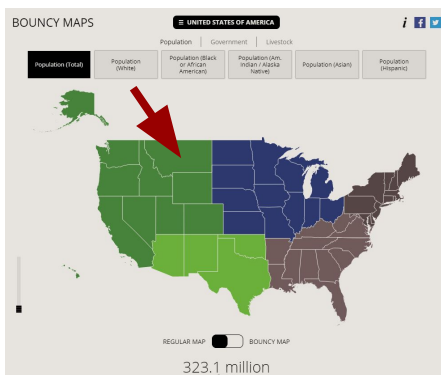


ICYMI...Google has streamlined Slide's presenter toolbar. To keep the toolbar out of the way, the main toolbar includes *Next*, *Slide#*, and *Previous*. To jump to a particular slide, click the *Slide#* and select the desired slide. The *More* menu contains other options.



## Bouncy Maps

[Bouncy Maps](#) can help students visually compare various statistics from different countries or the US states. The top menu allows you to choose between the US or WORLD. Choose a statistics category from the sub menu and scroll below to see interesting facts and how each country or state measures up. The maps can be displayed as regular or "bouncy". In the bouncy version, the countries' maps sizes are adjusted according to their statistics in that category. The visualization tool makes it easy to compare the land area of Montana, for example, to its population size.



## Emojipedia

Adding emojis to your Docs, Slides, Classroom topics, etc. is an easy way to organize materials and direct students' attention. These can be especially helpful for non-readers and ELLs. Use [Emojipedia](#) to search for emojis. Then click on the desired emoji. Copy and then paste the emoji in any text box. 🌻🌻🌻🌻🌻🌻

**Blossom**

**Emoji Meaning**

A flower that has blossomed. Depicted as a flower with white or yellow petals, as a daisy, with a golden center.

Commonly used for *Valentine's Day*, *Mother's Day*, and other special occasions. May be more generally used to convey such ideas as love, appreciation, and happiness. Also used as a yellow or white accent color.

Not to be confused with 🌻 *Sunflower* or 🌸 *Cherry Blossom*, though their applications may overlap.

Google's flower was once pink. Microsoft's was previously yellow. Samsung's white.

Blossom was approved as part of *Unicode 6.0* in 2010 and added to *Emoji 1.0* in 2015.

**Copy and Paste**

Copy and paste this emoji: 🌻 Copy

