

## Printer Installation on Windows

Here's a guide on how to install drivers on your Windows machine.

Grab a cup of coffee, take your time, and read through all the steps **BEFORE** you start. Stay calm and give yourself the time you need 😊.

We'll do our best to help you if something doesn't work, but since there are so many different operating systems, we may not have the expertise to solve your specific issue.

Sørg for å være tilkoblet rett nettverk: FLOW, IKKE Flow Guest eller FLOW-5

Ensure you're connected to the correct network:

- Connect to **FLOW**.
- **DO NOT** use "Flow Guest" or "FLOW-5".

Download the driver from Konica Minolta:

- Visit the [Konica Minolta Support Center](https://www.konicaminolta.no/nb-no/support/nedlastingscenter).
- Search for **"bizhub C308"**.
- Click the **plus sign** next to **Driver**.
- Select **Download** for the latest version of the driver.

Kontakt oss for å få støtte via telefon eller e-post. Vi er her for å hjelpe deg.

Søk etter maskinmodell: bizhub C308

Søk produkter steg for steg: A3 Multifunctional Colour, bizhub C308

Driver

Norwegian Windows 10 (64bit) Versjon

Universal Printer Driver V4

Versjon	Lanseringsdato	Skrivespråk	Beskrivelse	Last ned
2.0.0.3	Nov 22, 2021	PCL6	1	2
1.4.0.4	Nov 5, 2020	PCL6	1	2
1.3.0.13	Feb 5, 2020	PCL6	1	2
1.2.0.9	Dec 9, 2019	PCL6	1	2
1.1.2.3	Jan 22, 2019	PCL6	1	2
1.1.1.22	Feb 7, 2019	PCL6	1	2

Universal Printer Driver

Versjon	Lanseringsdato	Skrivespråk	Beskrivelse	Last ned
3.0.117.0	Dec 13, 2021	PCL6	1	2

22 78 98 00

## Install the driver:

- Accept the license agreement and download the **ZIP file**.

Søk etter maskinmodell:

bizhub C308

SØK >

Driver

Norwegian Windows 10 (64bit)

Universal Printer Driver V4

Versjon	Lanseringsdato
2.0.0.3	Nov 2021
1.4.0.4	Nov 2021
1.3.0.13	Feb 2021
1.2.0.9	Dec 2020
1.1.2.3	Jan 2020
1.1.1.22	Feb 2019

Universal Printer Driver

Versjon	Lanseringsdato	Skrivespråk	Beskrivelse	Last ned
3.9.117.0	Dec 13, 2021	PCL6		

PCL6 Universal V4 Print driver (2.0.0.3 MU) for KONICA MINOLTA

Software End User License Agreement

PLEASE READ CAREFULLY THE LICENSE AGREEMENT BELOW BEFORE DOWNLOADING, INSTALLING OR USING THE SOFTWARE. DOWNLOADING, INSTALLING OR USING THE SOFTWARE SHALL BE DEEMED YOUR LAWFUL ACCEPTANCE OF THE TERMS AND CONDITIONS BELOW. IF YOU DO NOT AGREE TO THEM, DO NOT DOWNLOAD, INSTALL, NOR USE THE SOFTWARE.

1. SOFTWARE

"Software" means this computer program (software), independent from its distribution channel, i.e. whether downloaded on royalty-free basis (which may include digitally encoded, machine readable, scalable outline font data as encoded in a special format) or obtained on DVD or any other physical data carrier, together with all codes, techniques, software tools, format, design, concepts, methods and ideas associated with the computer program and all documentation related thereto.

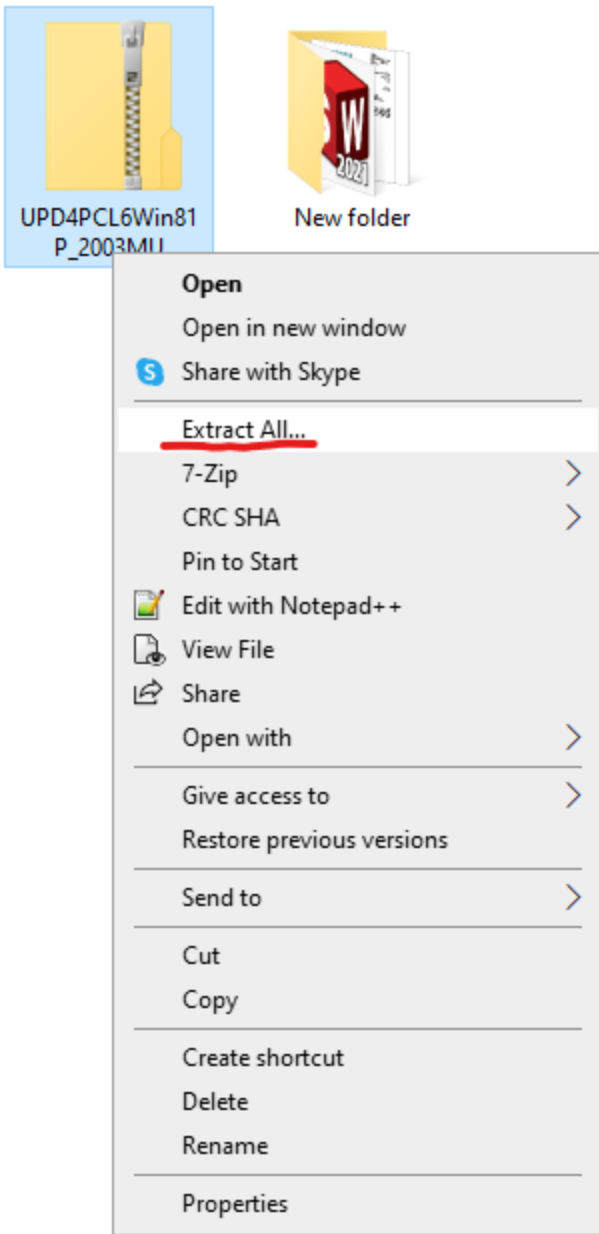
☒ Godta lisensavtale

Filer:

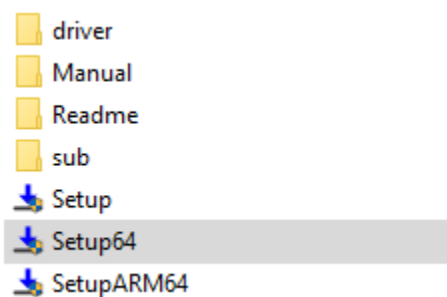
- ☒ UPD4PCL6Win81P\_2003MU.zip (49536 KB)
- ☒ UPD4PCL6Win81P\_2003MU.txt (60 KB)

< Lukk

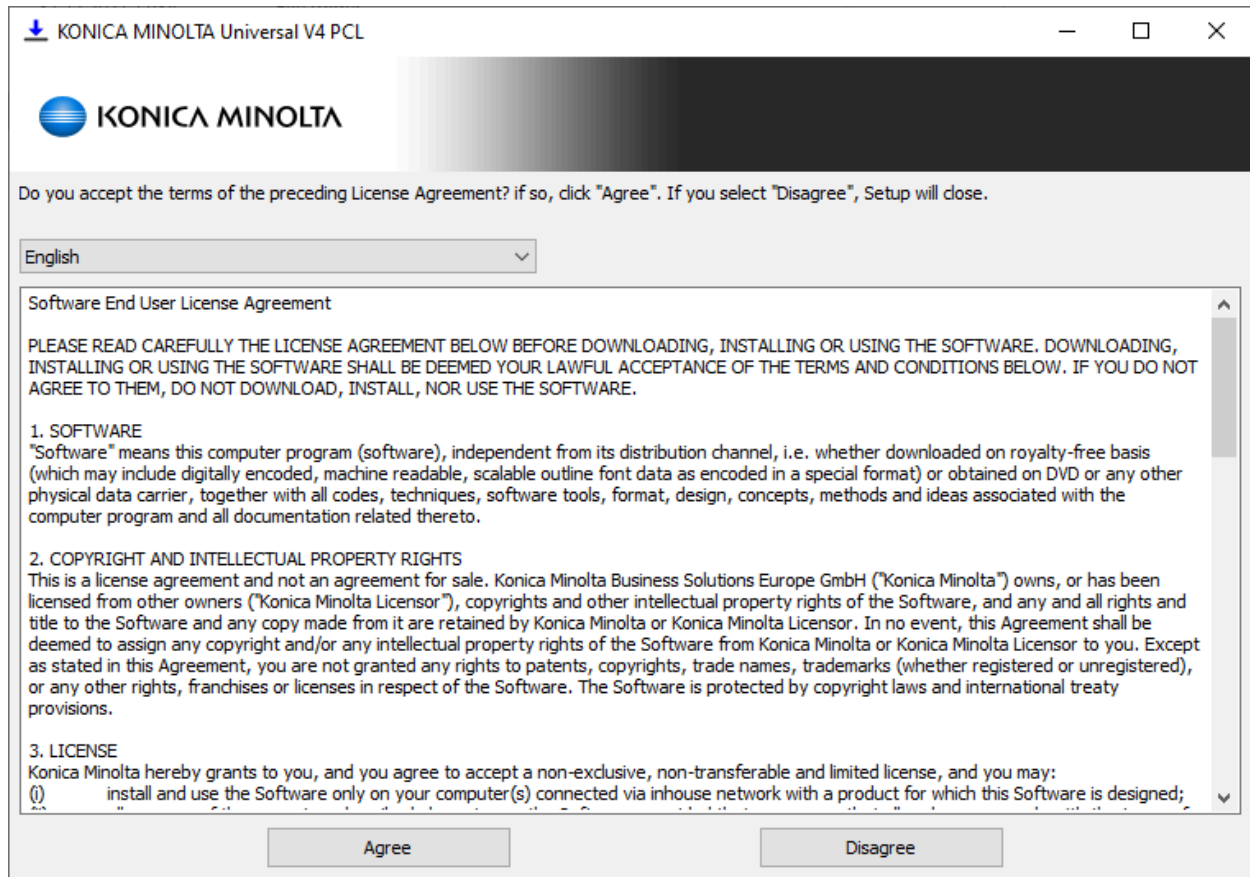
Navigate to the downloaded file and extract the contents of the ZIP file.



Open **Setup 64** (this applies in 99% of cases; otherwise, choose **Setup**).

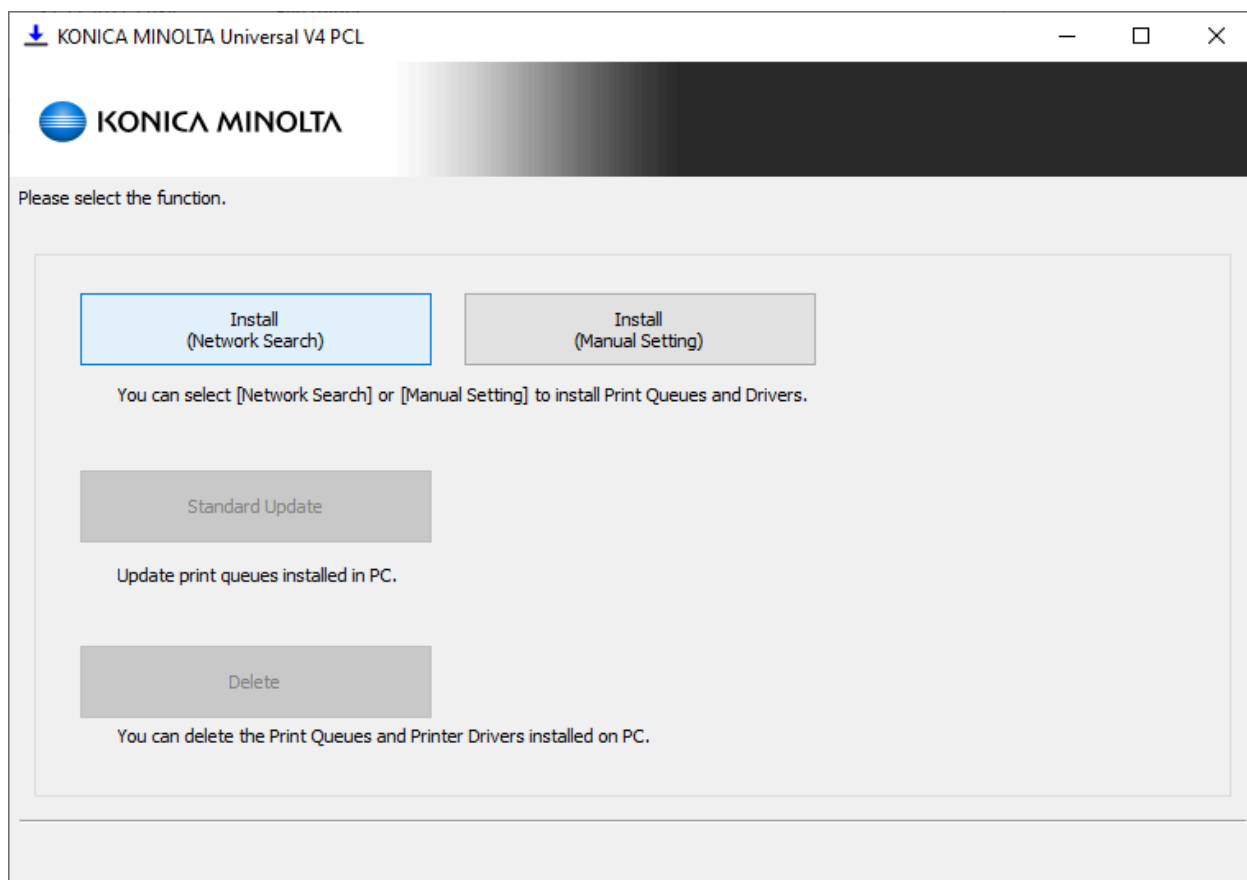


Accept the terms and conditions.

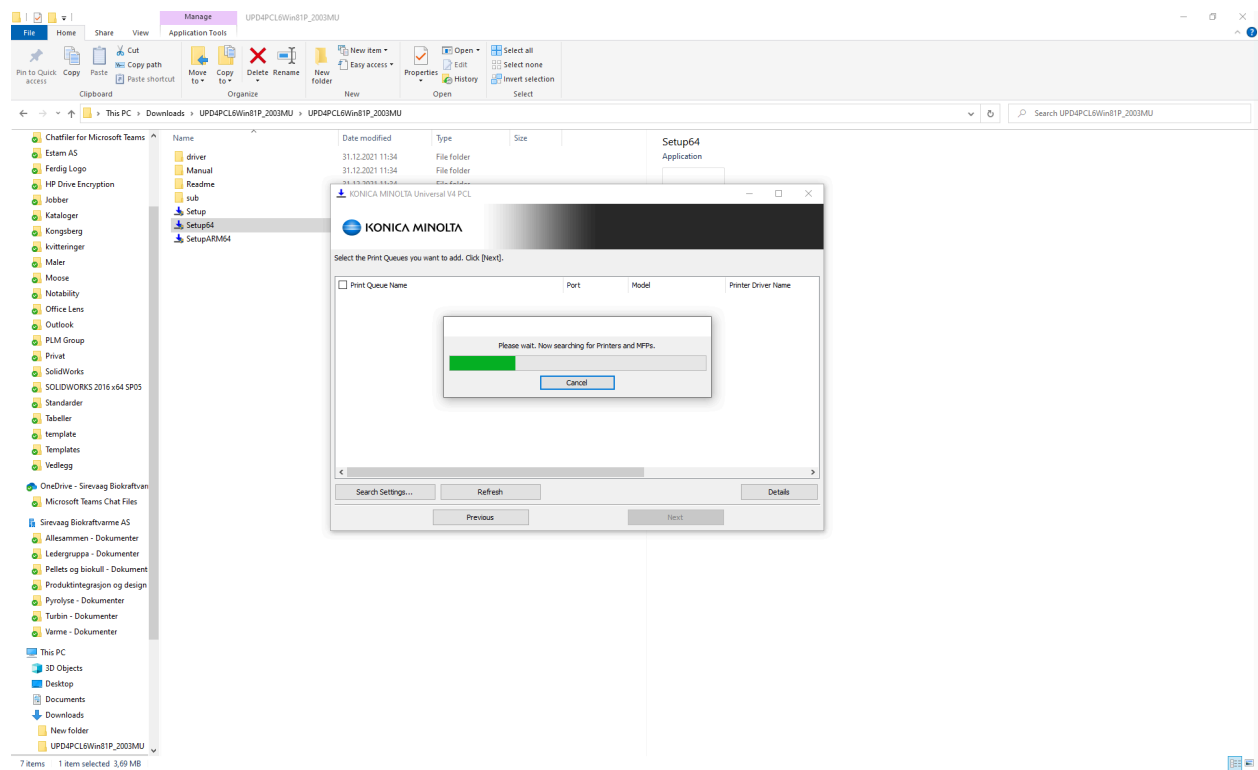


**Choose the installation method:**

- Select **Install (Network Search)** as long as you're connected to the FLOW network (**not Flow Guest**).



The driver will now search for the printer; this may take a while.



Choose **Konica Minolta Bizhub C308** with port **192.168.10.12**.



Select the Print Queues you want to add. Click [Next].

<input type="checkbox"/> Print Queue Name	Port	Model	Printer Driver Name
<input type="checkbox"/> HP Officejet Pro 8610 PCL (192.168.10.42) v4	192.168.10.42	Baseline	KONICA MINOLTA Universal
<input type="checkbox"/> EPSON TM-T20III PCL (192.168.10.32) v4	192.168.10.32	Baseline	KONICA MINOLTA Universal
<input checked="" type="checkbox"/> KONICA MINOLTA bizhub C308 PCL (192.168.10.12) v4	192.168.10.12	KONICA MINOLTA C308	KONICA MINOLTA Universal

< >

Search Settings...

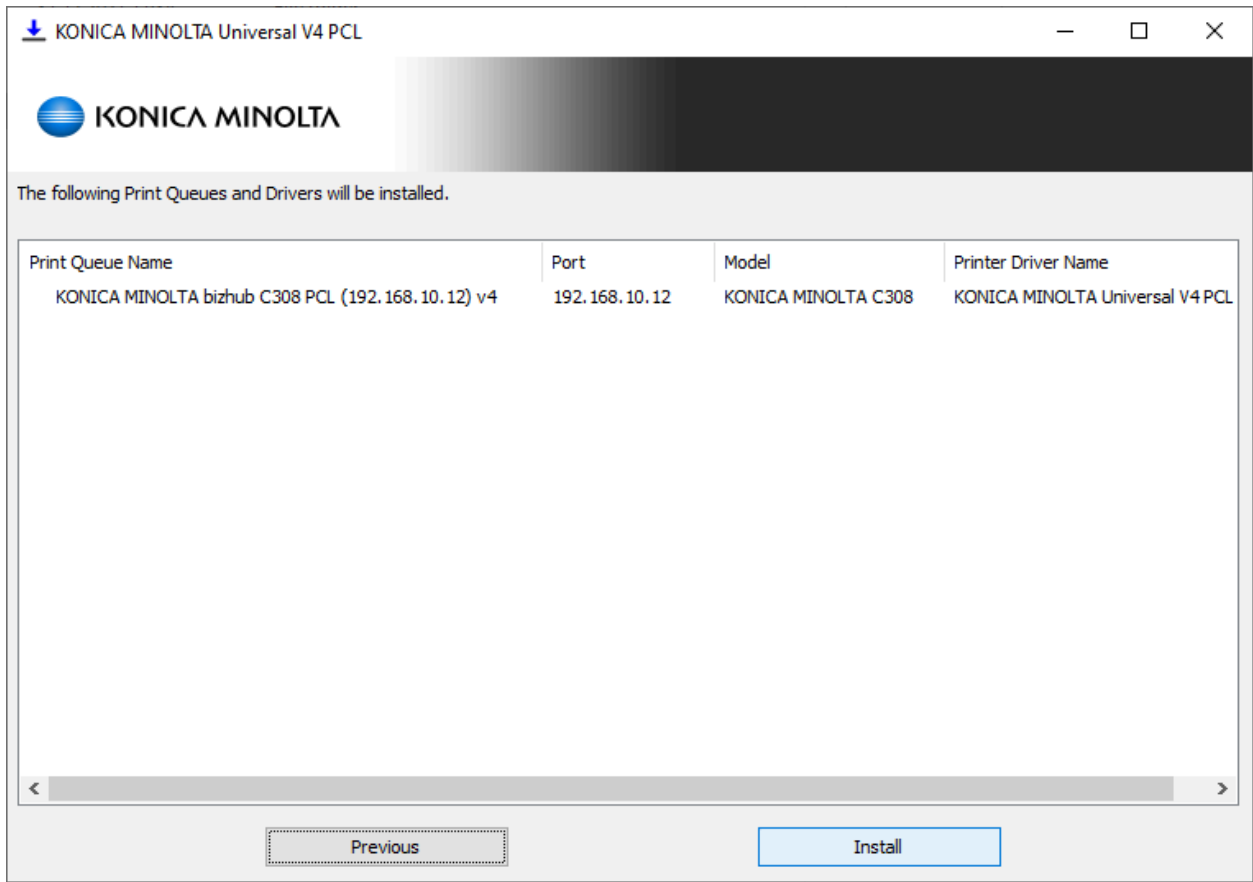
Refresh

Details

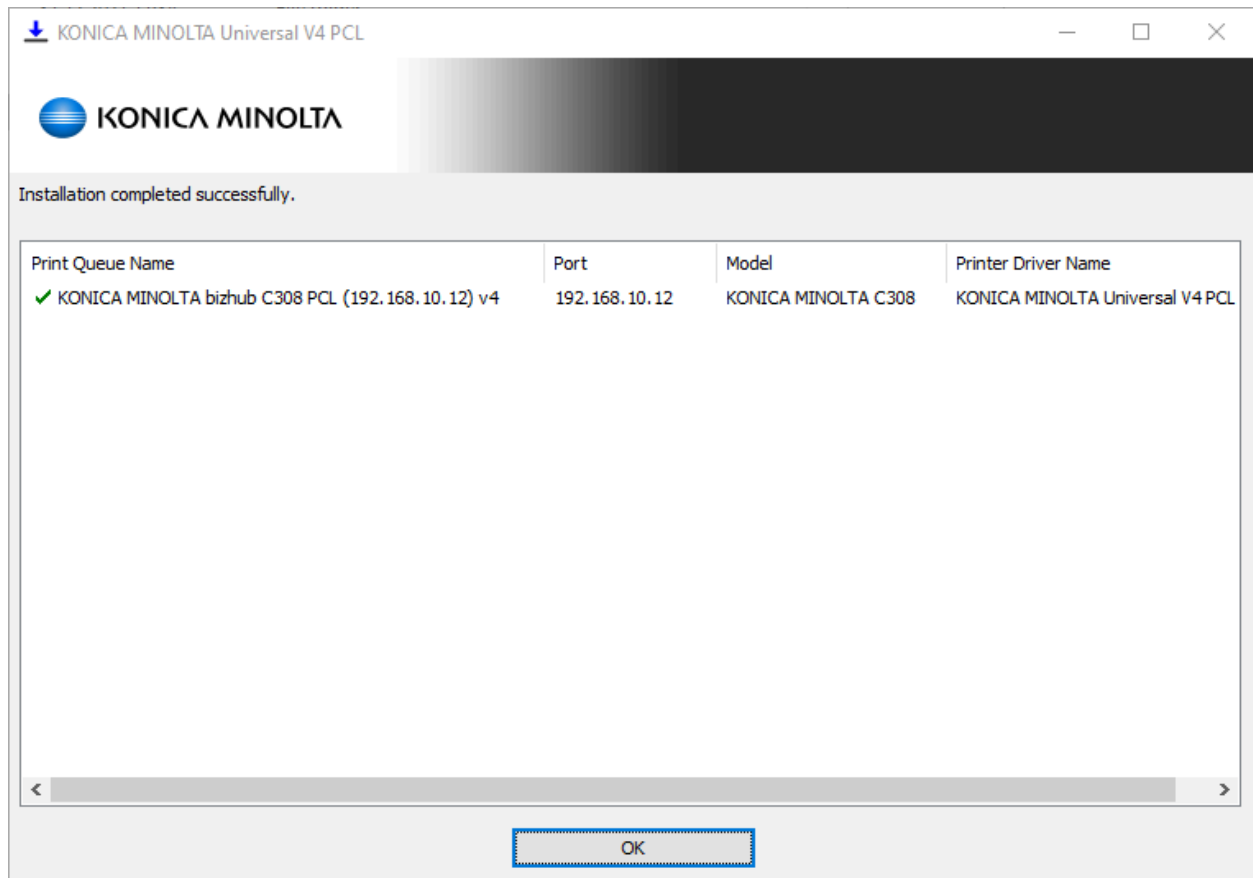
Previous

Next

Click **Install...**



...then **OK**.



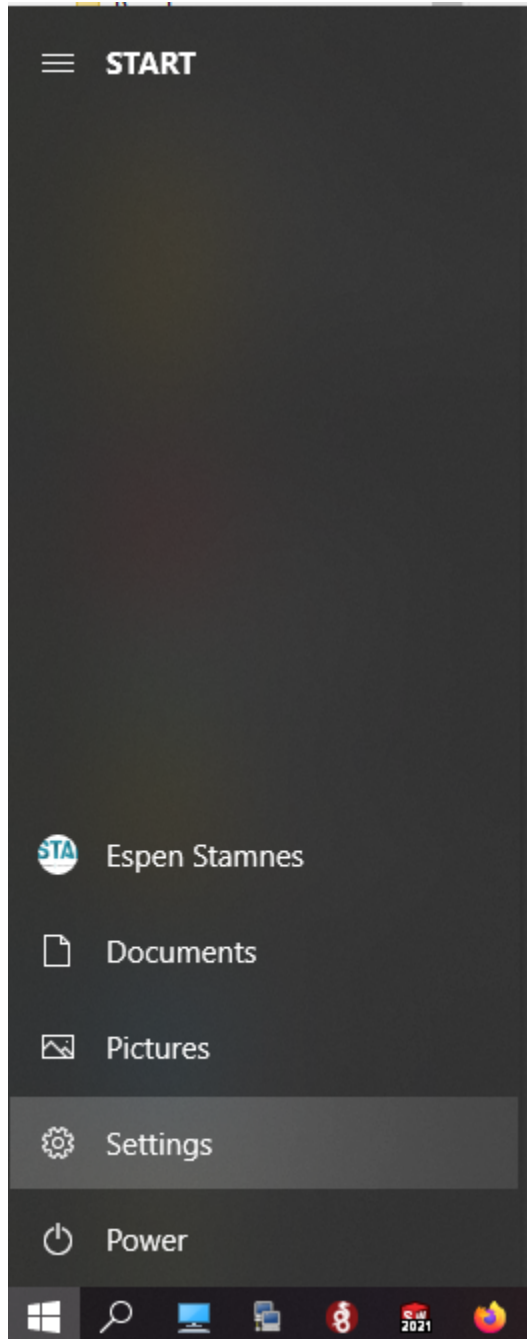
**Set up your username and password:**

- The printer is now installed, but to print, you'll need to enter the username and password provided by FLOW.
- Find your username [here](#).  
(If your name isn't listed, let Andreas know!).
- Your password is your **four-digit code**, the same one used with your keycard.

## Additional Configuration:

### 6. Access Windows Settings:

- Go to **Settings** to view and configure printers.





Settings



## Windows Settings

Find a setting



### System

Display, sound, notifications, power



### Devices

Bluetooth, printers, mouse



### Phone

Link your Android, iPhone



### Network & Internet

Wi-Fi, airplane mode, VPN



### Personalization

Background, lock screen, colors



### Apps

Uninstall, defaults, optional features



### Accounts

Your accounts, email, sync, work, other people



### Time & Language

Speech, region, date



### Gaming

Xbox Game Bar, captures, Game Mode



### Ease of Access

Narrator, magnifier, high contrast



### Search

Find my files, permissions



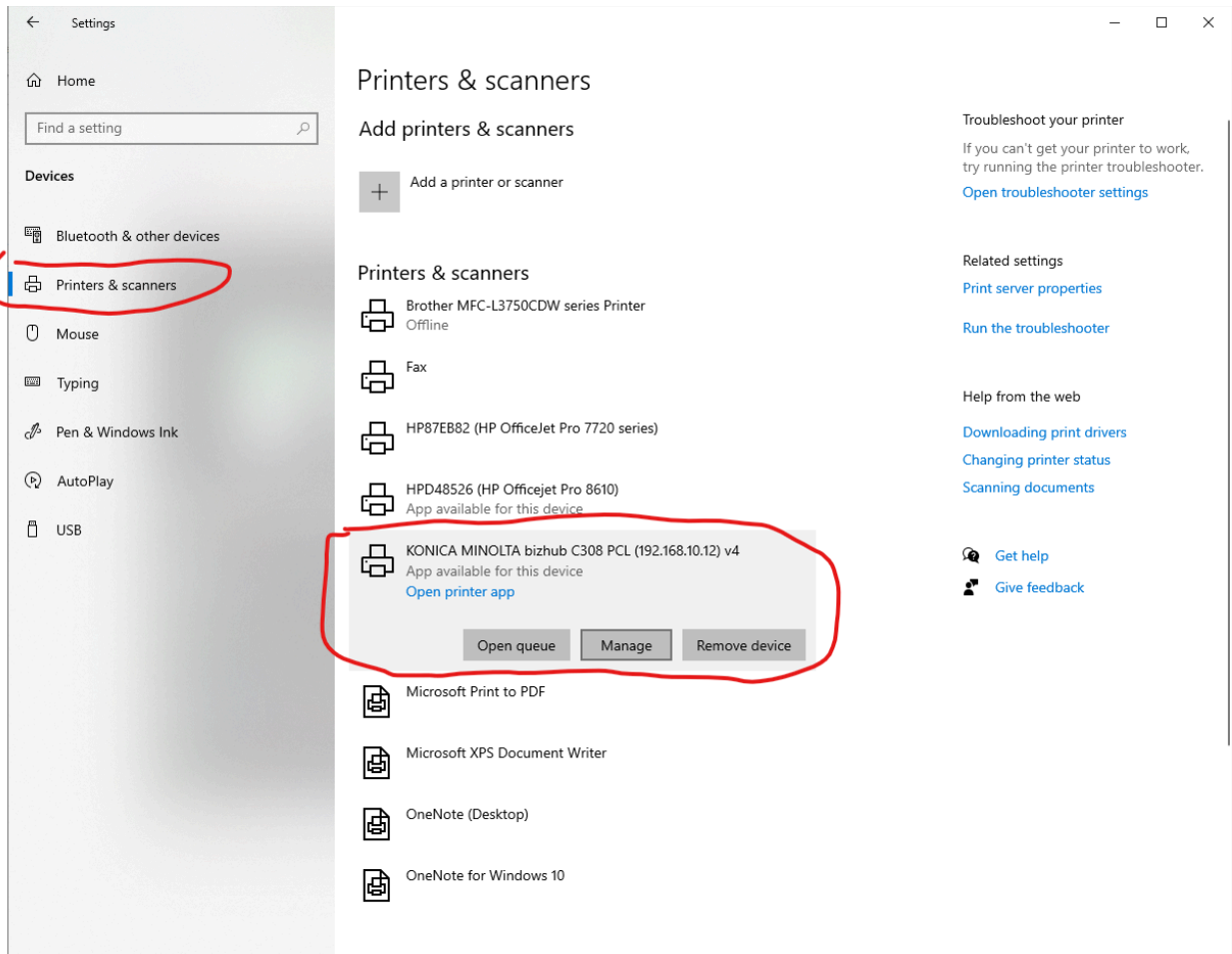
### Privacy

Location, camera, microphone



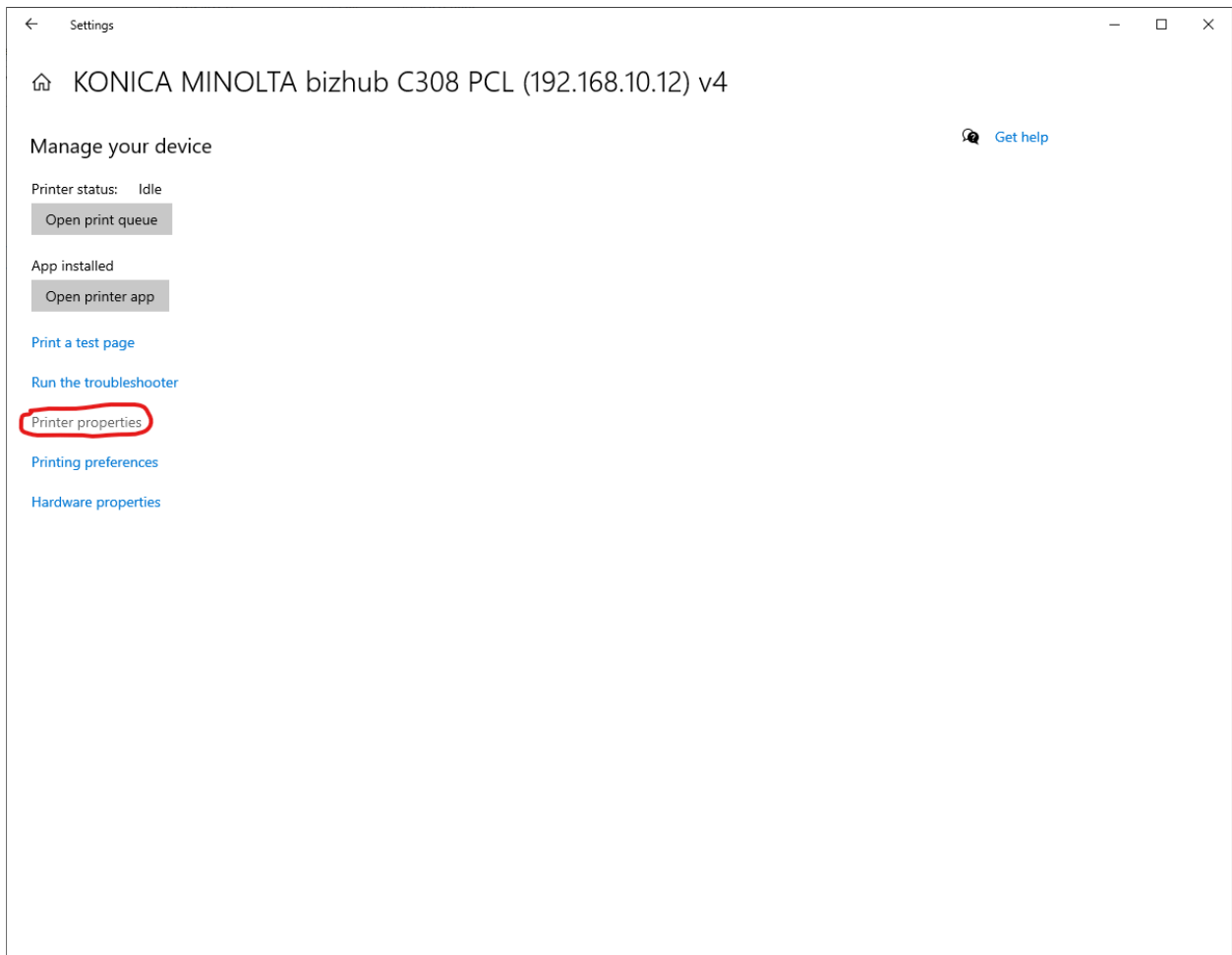
### Update & Security


Windows Update, recovery, backup



### Rename the printer (optional):

- Open the printer's properties if you wish to rename it.



 KONICA MINOLTA bizhub C308 PCL (192.168.10.12) v4 Properties

General

Sharing


Ports

Advanced

Color Management

Security

Device Settings



Flow Printer

Location:

Comment:

Model:

KONICA MINOLTA Universal V4 PCL

Features

Color: Yes

Double-sided: Yes

Staple: No

Speed: Unknown

Maximum resolution: 1200 dpi

Paper available:

Letter

Preferences...

Print Test Page

OK

Cancel

Apply



Settings



## Flow Printer

### Manage your device



[Get help](#)

Printer status: Idle

[Open print queue](#)

App installed

[Open printer app](#)

[Print a test page](#)

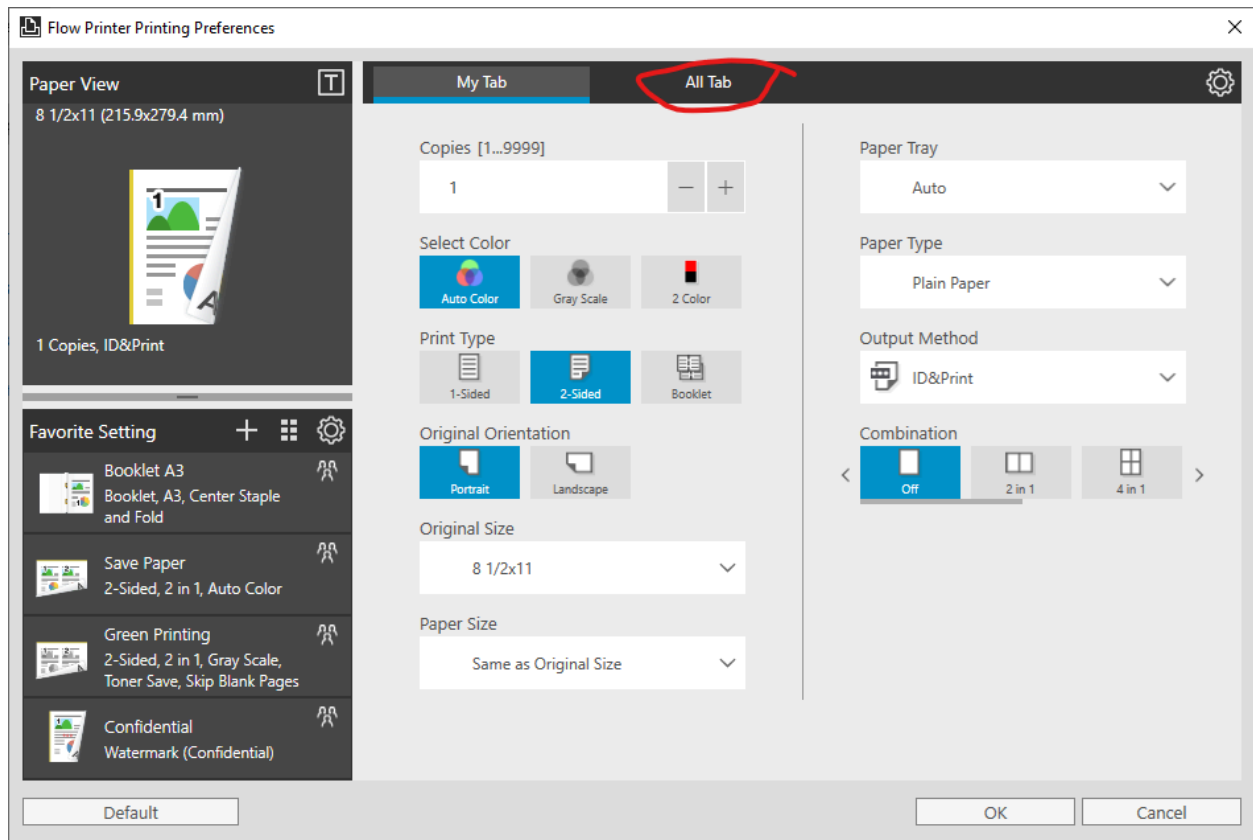
[Run the troubleshooter](#)

[Printer properties](#)

[Printing preferences](#)

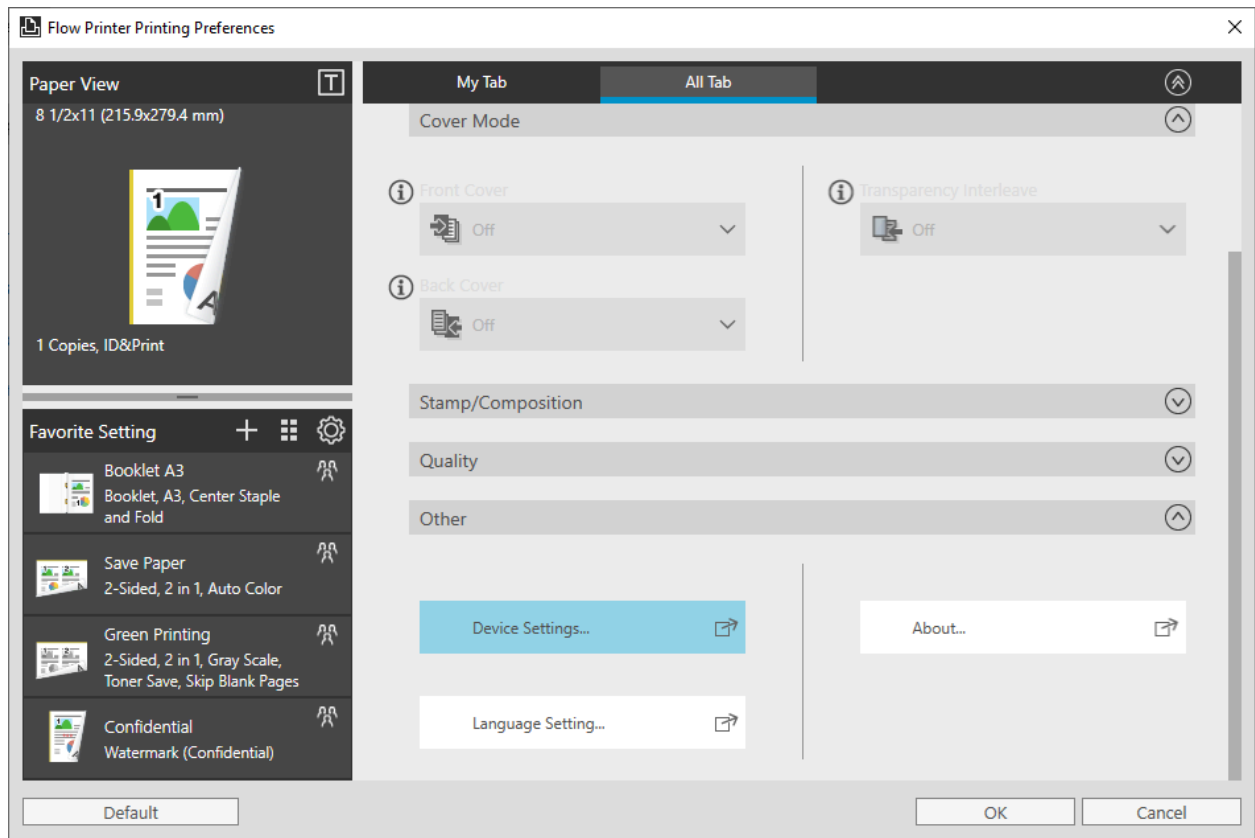
[Hardware properties](#)

Adjust printing preferences:



Go to **Printing Preferences**.

Click **Device Settings**.



Device Settings

Model

C308

Select Model...

Device Option

Option	Value
Saddle Kit	None
Hard Disk	Installed
User Authentication	ON (MFP)
Public User	Restrict
Account Track	Disable

Obtain Device Information

Obtain Settings...

Encryption Passphrase

Administrator Customize...

OK

Cancel

Admin Configuration

×

Select Color

None

▼

Print Type

None

▼

Output Method

Select default setting

▼

Default

ID&Print

▼

Secure Print

Secure Print ID

None

▼

Password

None

▼

Save in User Box

File Name

None

▼

User Box Number

Default

OK

Cancel

### Set up user authentication:

- Under **User Authentication**, enter:
  - Username: Found in the [link above](#).
  - Password: Your personal **four-digit code**.

The screenshot shows the 'Admin Configuration' dialog box. The 'User Authentication' section is highlighted with a red outline. Within this section, the 'User' dropdown is set to 'Select default setting', the 'Default' dropdown is set to 'Recipient User', the 'User Name' dropdown is set to 'Select default setting', and the 'Default' dropdown is set to 'Edit User Name'. The 'Password' dropdown is set to 'Select default setting'. The 'Server Setting' dropdown is set to 'None'. The 'MFP Authentication' dropdown is set to 'None'. The 'Default' button is highlighted with a red circle. The 'OK' and 'Cancel' buttons are also visible at the bottom.

Click **OK** and test by printing 😊

## Final Step: Connect Your Keycard

Even though the printer setup is complete, there's one final step.

You'll need help from Andreas to link your keycard to your account.

From now on, your print jobs will only be accessible when you physically scan your keycard at the printer.

This step is required for **GDPR compliance**.

Good luck! 😊