

# How to: Switch Google Profiles at Home

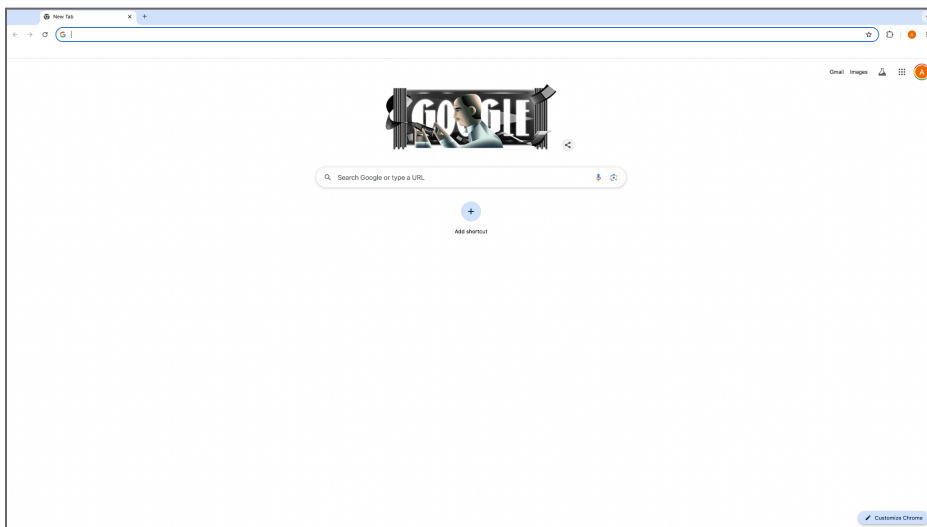
1

*Set your child up to successfully utilize school resources from home by creating Google Chrome profiles. Using different Google profiles keeps tabs, history, bookmarks, etc. separate. This allows your child to continue their schoolwork on a family computer, while not interfering with your personal work. Follow along to learn more about how to switch google profiles at home.*

**Note:** Screenshots in this guide are from Google Chrome, which is the browser that enables the Google profiles feature

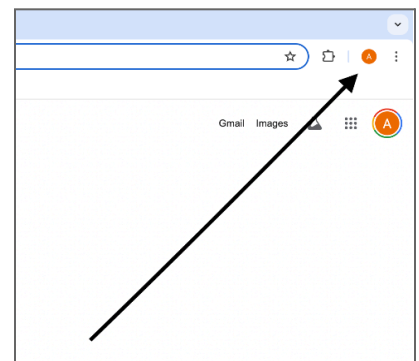
## Steps

1. Open your browser to a “New Tab”



2. Click on the Google Account profile icon in the top right corner

**Note:** There will be two Google profile icons when you open a new tab, click on the icon next to the URL search bar (closest to the top right corner). Do **NOT** use the bottom profile icon as that will not allow a clean switch between profiles.

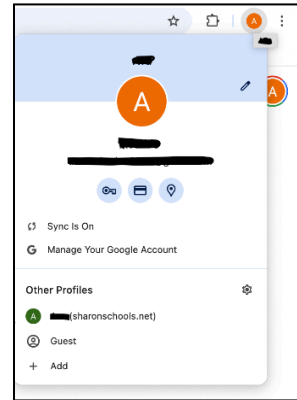


# How to: Switch Google Profiles at Home

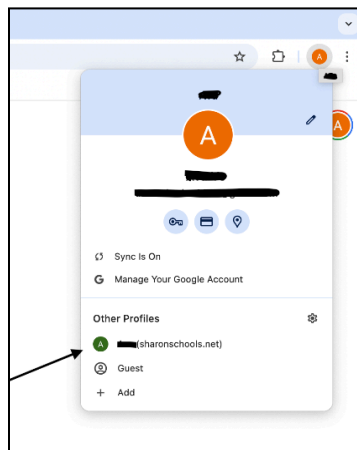
2

## 3. View the list of Google profiles

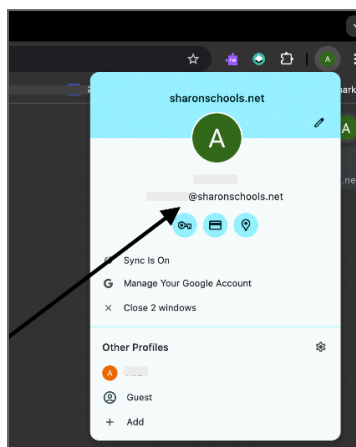
**Note:** If a student's school profile has not been added on that particular device, continue from [this tutorial](#).



## 4. Click on the student's school profile



## 5. Done! A new browser should open with the student's school profile. To verify this, click on the Google profile icon in the top right corner of the screen and check the email address to see if it matches the student's school email address.



**Note:** To switch back to a personal profile from a school profile, repeat steps 1-5.

---

## Additional Resources

- [Blog \(with written steps and videos\)](#) - Geared more towards teachers but includes videos and troubleshooting tips similar to the ones in this guide
- [Google Chrome Help](#) - Google's official guide to switch profiles