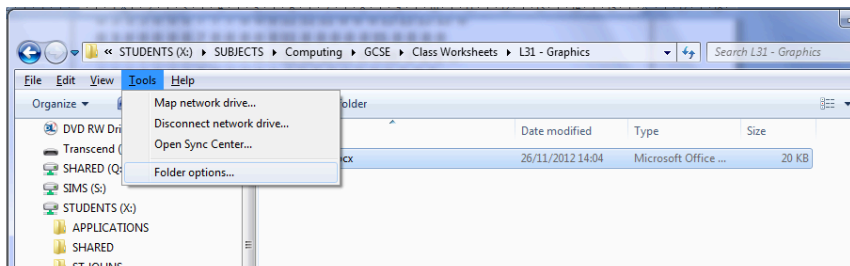


GCE Computing – Images Task 1

1. Open notepad and copy all of the text in the table below

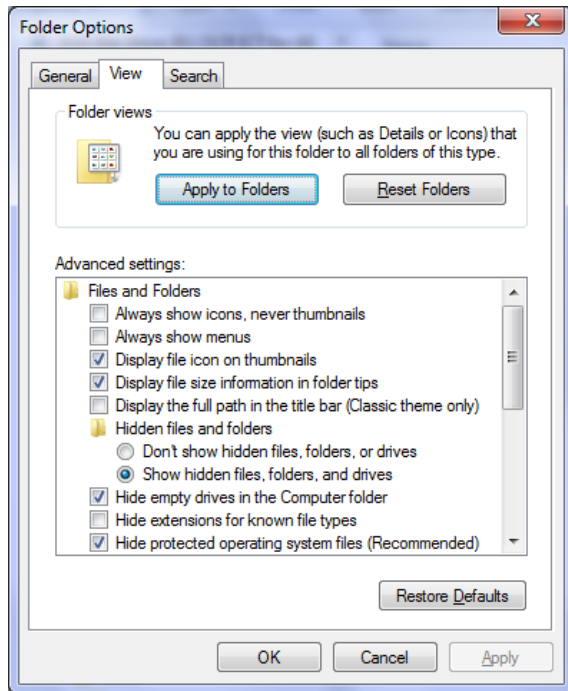
```
P2
# Shows the word "FEEP"
24 7
15
0 0 0 0 0 0 0 0 0 0 0 0 0 0 0 0 0 0 0 0 0 0 0
0 3 3 3 3 0 0 7 7 7 7 0 0 11 11 11 11 0 0 15 15 15 15 0
0 3 0 0 0 0 0 7 0 0 0 0 0 11 0 0 0 0 0 15 0 0 15 0
0 3 3 3 0 0 0 7 7 7 0 0 0 11 11 11 0 0 0 15 15 15 15 0
0 3 0 0 0 0 0 7 0 0 0 0 0 11 0 0 0 0 0 15 0 0 0 0
0 3 0 0 0 0 0 7 7 7 7 0 0 11 11 11 11 0 0 15 0 0 0 0
0 0 0 0 0 0 0 0 0 0 0 0 0 0 0 0 0 0 0 0 0 0 0
```

2. Save the file as FEEP.pgm
3. Notepad and Windows will insist on putting a hidden ".txt" at the end of the file. This will stop it being opened correctly in Photoshop.
4. Open Windows file explorer and go to the folder where you saved your file.
5. Press [Alt]+[T] and select "folder options" (as shown below)



6. Now click on "Folder options" and untick the option "Hide extensions for known file types" (shown below)

GCE Computing – Images Task 1



7. and rename the extension as FEEP.**pgm** (removing any .txt extension)
8. Open the file in Adobe Photoshop
9. Look again at the contents and determine:
 - a. What does the 24 7 signify?
10. Using the Internet, what do the P2 and 15 mean?
11. Create your own image in Notepad to display your name
12. As extension work, re-create the first letter of your name using the PPM standard in glorious colour.