

# Forensic Science Syllabus



**Teacher:** Ms. Cassandra Dorsey

**Impact Café Days:** Wednesday's, 8:00am to 4:00pm

**Virtual Office Days:** M-F, 3-3:30pm. You can also schedule one on one appointments.

**Contact Information:** You will get the quickest response during normal school hours from 8:00am to 4:00pm. If you need to get in touch after these hours, email or text is the preferred method, and I will respond at my earliest convenience.

- Email: [cassandra.dorsey@henry.k12.ga.us](mailto:cassandra.dorsey@henry.k12.ga.us)
- Phone (Google Voice): 770-742-9234 (call, text, or voice mail. Please no calls after 5pm, and ensure you leave a voicemail)
- Remind: @forensicia
- Webinar link: Found inside of your Google Classroom
- Webinar appointment link: <https://bit.ly/35skkmk>

## Course Description:

This course is designed for students who are interested in careers that apply science to the law. The purpose of this course is for students to gain experience in the major investigative techniques currently used by forensic scientists and crime scene investigators, and to develop an understanding of the scientific concepts which serve as the basis for these techniques. Students will learn the scientific protocols for analyzing a crime scene, how to use chemical and physical separation methods to isolate and identify materials, how to analyze biological evidence and the criminal use of tools, including impressions from firearms, tool marks, arson, and explosive evidence.

One of the unique features about Forensic Science at Impact Academy is the ability for students to utilize their own laptop and oftentimes the ability to work at their own pace! This is different from most high school classes because it means that the student (not the teacher) is in charge of the learning process!

**Course Objectives:** *Students will demonstrate proficiency according to the Georgia Standards of Excellence (GSE), ([www.georgiastandards.org](http://www.georgiastandards.org)). Please refer to my website for a full listing of those standards.*

## Required Text:

Forensic Science Helpful Websites – Impact Teacher Webpage  
Forensic Science Textbook - Launchpad

**Pacing:** When you log into Edgenuity, you can view the entire course map for your course—this is an interactive scope and sequence of all topics you will study. The units of study are summarized below:

Unit 1: HISTORY OF FORENSICS SCIENCE AND DNA ANALYSIS

Unit 2: CSI AND FORENSIC MEDICAL AND DENTAL PROFESSIONALS

Unit 3: FORENSIC BIOLOGIST, FORENSIC CHEMIST, PHYSICAL ANTHROPOLOGIST

Unit 4: FORENSIC BIOLOGIST, FORENSIC CHEMIST, PHYSICAL ANTHROPOLOGIST

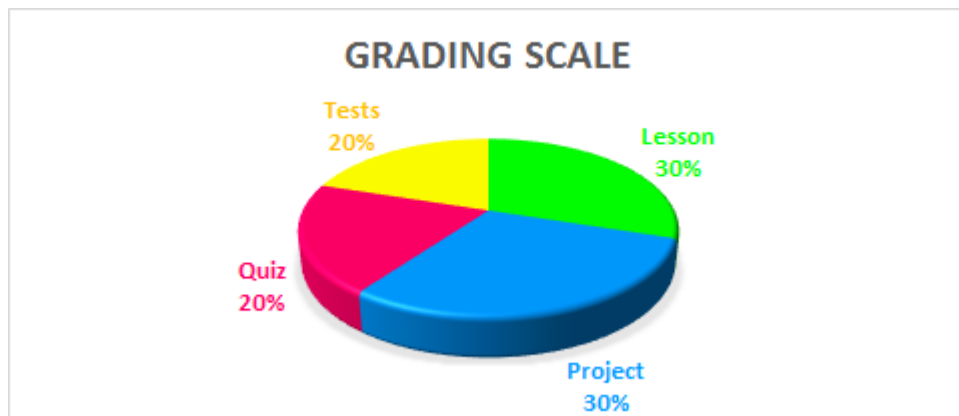
Unit 5: ADDITIONAL CAREERS IN FORENSICS



**Student Expectations:** This course requires the same level of commitment as a traditional classroom course would. If you are in a yearlong course, you need to spend at least 1 hour actively working per day. This means that you should have at the minimum 5 hours of active work in Forensics. If you are on the semester block instead, your course is accelerated and thus you need to complete more work daily to stay on pace. You should spend at least 2 hours a day in your course which is equates to 10 hours minimum each week in Forensics. Be sure that you follow your assignment calendar in Edgenuity as well as the pacing guide provided in the syllabus to ensure you are done with your course be the last day of school for you. Besides completing Edgenuity coursework, the following items are also required of you:

- Sign up for the Google Classroom. The code for the course is **qzkti44**. If you need assistance getting set up in Google Classroom, please see the help document linked in Edgenuity and on my website. You will find all assignments this year in Google Classroom in case you have trouble accessing them in Edgenuity.

### Grading:



### Testing Policy:

- **All Unit or Topic tests must be proctored.** This means that all assessments must be taken in my presence or with one of the other science teachers (Hatfield or Weaver). You must be sure to review the testing calendar to see when testing days are occurring. Failure to take your test within a reasonable time frame will result in a **permanent 0**. Ensure you study and take ample notes prior to taking your tests.
- If a student is found to have cheated on any test or assignment, you will receive a zero without an opportunity to make-up the test or assignment.



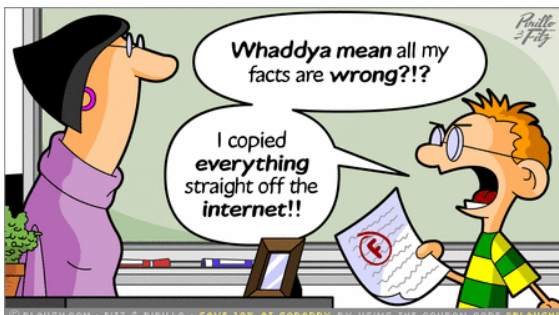
## Retake Policy

- **Retake Policy:** If you fail to show mastery on your assessments which is **at least 75%**, you must complete a remediation plan in order to receive an additional attempt.

<b>Quizzes &amp; Unit or Topic Tests</b>	<ol style="list-style-type: none"><li>1. Students have up to <b>1 week</b> after submitting the assessment to initiate the retake policy.</li><li>2. Complete the remediation plan provided by teacher within time frame teacher has provided.</li><li>3. Students who initiate the process will take a different version and/or form of the original assessment</li><li>4. <b><u>If a student cheats on an assessment, they are ineligible to participate in the reteach/retake policy.</u></b></li><li>5. If a student fails to show up after confirming the scheduled retake, they forfeit the retake opportunity.</li></ol>
<b>Assignments</b>	<ol style="list-style-type: none"><li>1. Assignment must be resubmitted within <b>one week after teacher releases grade.</b></li><li>2. If the work is resubmitted after one week, it will not be reassessed.</li></ol>

**LAST DAY FOR TEACHER GRADED WORK WILL BE DECEMBER 17TH.** This includes but is not limited to labs, projects, discussion posts, case studies, etc.

### Plagiarism, Cheating, and Academic Integrity:



Plagiarism is the practice of copying words, sentences, images, or ideas for use in written or oral assessments without giving proper credit to the source. Cheating is defined as the giving or receiving of illegal help on anything that has been determined by the teacher to be an individual effort. Both are considered serious offenses and will significantly affect your course grade. Please refer to the Student Code of Conduct book for additional information.

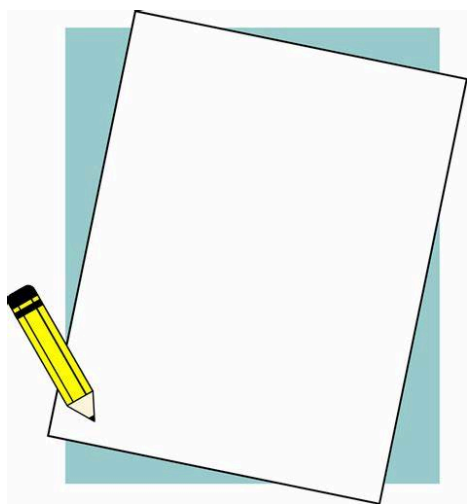
Students caught cheating or allowing other students to copy their work will receive a zero for that particular assignment or activity. Depending on the severity of the case, students may also be referred to the school administration and parents may be called.

### **Grades Guarantee:**

You have full control over your success. I will not alter any grade based on request or proximity to a desired level. Every decision you make throughout the year will lead to a predictable outcome with criteria that is consistent for every student.



### **Blank Documents:**



Typing you are complete with an assignment in Edgenuity and/or turning in files with nothing them on them or the assignment not completed is not acceptable. Assignments will be reset once for submitting unacceptable work. Failure to complete your assignment and doing any of the above actions will result in a **permanent 0** without the ability to redo those assignments. It is imperative that you complete your work as you reach it. Stating you are trying to catch up in your course as the reason for blank documents or incorrect files is not logical as you are not catching up, you are still behind in your coursework. If you do not know how to complete an assignment reach out to me.

### **Extra Credit:**



At Impact Academy, we believe in providing ample opportunities for students to master the state standards as well as the concepts taught in each course. With this in mind, we do not provide extra credit. Students have several opportunities to engage in hands-on and meaningful learning experiences as well as opportunities to engage in remediation in attempt to master the content if they take advantage of the retake policy.