



LOGHAT ARABI

Jurnal Bahasa Arab dan Pendidikan Bahasa Arab

<https://journal.iaiddipolman.ac.id/index.php/loghat/index>



Title should be clear, brief and informative. Abbreviation and formula should be avoided. Related to the variables and/or the content of the article. No more than 16 words. (Times New Roman, 14). Should Have English Title and Roman Script (Indonesia and English, or Arabic and English)

First Author^{1*}, Second Author², Third Author³, Last Author^x, (Times New Roman, 11)

¹First Affiliation, Country (Times New Roman, 10)

²Second Affiliation, Country (Times New Roman, 10)

³Second Affiliation, Country (Times New Roman, 10)

^xLast Affiliation, Country (Times New Roman, 10)

Article Information:

Received : Juni xx, 20xx
Revised : August xx, 20xx
Accepted : December xx, 20xx

Keywords:

3-5 keywords, separate with the semicolon and alphabetical order

*Correspondence Address:

xxxxxxxxxxxxx@mail.com

Abstract: All information about the formatting requirements is contained in this document. Please review it carefully. You may use the document as a template and copy/paste your paper content here – this is probably the easiest option. Several styles have been included in this template to facilitate formatting – you may find it easier to use them instead of formatting each segment differently. Note that it is important to adhere to the requirements exactly, as this will form the camera-ready version that will be used to produce the Journals. The limitations on the length of the document are as follows. The abstract should 150 - 250 words and written in (two languages) English, Arabic or Indonesia, which (the elements in the content of the abstract) consist of background (optional), research objectives, research methods, important results or findings in the research and there may be implications.

المستخلص: يتم تضمين كافة المعلومات حول متطلبات التنسيق في هذا المستند. يرجى مراجعتها بعناية. يمكنك استخدام المستند كقالب ونسخ / لصق محتوى ورقتك هنا - ربما يكون هذا هو الخيار الأسهل. القيود المفروضة على طول الوثيقة هي كما يلي. يجب أن يكون المستخلص 150-250 كلمة ومكتوب (لغتين) الإنجليزية أو العربية أو الإندونيسية، والتي (العناصر الموجودة في محتوى المستخلص) تتكون من الخلفية (اختياري)، أهداف البحث، طرق البحث، النتائج الهامة في البحث وقد تكون هناك آثار.

Loghat Arabi: Jurnal Bahasa Arab dan Pendidikan Bahasa Arab

Vol. xx, No. xx, Juni 20xx | DOI: <https://doi.org/10.36915/la.vxix.xxx>

<https://journal.iaiddipolman.ac.id/index.php/loghat/index>

Introduction / المقدمة / Pendahuluan

The introduction contains the purpose of the study and why the study is conducted. The main section of an article should start with an introductory section which provides more details about the paper's purposes, motivation, research methods and findings. The introduction should be relatively nontechnical, yet clear enough for an informed reader to understand the manuscript's contribution.

In general, the article in Loghat Arabi Journal is written in English, Arabic and Indonesian. The article also consists of 1 column, using "Times New Roman", font size 12, and space 1,5.

This template is designed to assist the author in preparing manuscript; it is an exact representation of the format expected by the editor. To use this template, please just *Save As* the MS Word file to the document, then copy and paste the document here. To copy and paste the text to this template document, please use "Special Paste" and choose "Unformatted Text".

All papers submitted to the journal should be written in good English. For the authors that their native language is not English are encouraged to have their paper that is checked grammatically and clarity. English language and copyediting services can be provided by: International Editing and Asia Editing. The work should not have been published or submitted for free publication. The official language of the manuscript to be published in Loghat Arabi Journal is Indonesia, Arabic, and English.

In Introduction, Authors should state the objectives of the work at the end of introduction section. Before the objective, Authors should provide an adequate background, and brief literature survey in order to record the existing solutions / method, to show which is the best of previous researches, to show the main limitation of the previous researches, to show what is the achievement (to solve the limitation), and to show the scientific merit or novelties of the paper. Avoid a detailed literature survey or a summary of the results.

Methods / منهج البحث / Metode Penelitian

Materials and methods should make readers be able to reproduce the experiment. It should be provided sufficient detail to allow the work to be reproduced. Methods that already published should be indicated by a reference: only relevant modifications should be described. Do not repeat the details of established methods.

Identify Subsections

It is both conventional and expedient to divide the method section into labeled subsections. These usually include a section with descriptions of the participants or subjects and a section describing the procedures used in the study. The latter section often includes description of (a) any experimental manipulations or inter-ventions used and how they were delivered-for example, any mechanical apparatus used to deliver them; (b) sampling procedures and sample size and precision; (c) measurement approaches (including the psychometric properties of the instruments used); and (d) the research design. If the design of the study is complex or the stimuli require detailed description, additional subsections or subheadings that divide the subsections may be warranted to help readers find specific information.

These subsections include the essential information to comprehend and replicate the study. Insufficient detail will make the reader confused ; too much detail will burden the reader with irrelevant information. It should be considered when using appendices and/or a supplemental website for more detailed information.

Participant (Subject) Characteristics

Appropriate identification of research participants is critical to the science and practice of psychology, particularly for generalizing the findings, making comparisons across replications, and using the evidence in research syntheses and secondary data analyses. If humans participated in the study, report the eligibility and exclusion criteria, including any restrictions based on demographic characteristics.

Research Design

Specify the research design in the method section. Were subjects manipulated, or were they observed naturalistically? If multiple conditions were created, how were participants assigned to conditions, through random assignment

or some other selection mechanism? Was the study conducted as a between-subjects or a within-subject design?

Results and Discussion / نتائج البحث ومناقشتها / Hasil dan Pembahasan

Results should be clear and concise. The results should summarize (scientific) findings rather than providing data in great detail. Highlight the differences between the results or findings and the previous publications by other researchers.

The discussion should explore the significance of the results of the work, not repeat them. A combined Results and Discussion section is often appropriate. Avoid extensive citations and discussion of published literature.

In the discussion, it is the most significance section of the article. Here you get the chance to make your data. Make the discussion corresponding to the results, but do not reiterate the results. Often should begin with a brief summary of the main scientific findings (not experimental results). The following components should be covered in discussion: How do your results relate to the original question or objectives outlined in the Introduction section (what)? Do you provide interpretation scientifically for each of your results or findings presented (why)? Are your results consistent with what other investigators have reported (what else)? Or are there any differences?

After presenting the results, you are in a position to evaluate and interpret their implications, especially with respect to your original hypotheses. Here you will examine, interpret, and qualify the results and draw inferences and conclusions from them. Emphasize any theoretical or practical consequences of the results. (When the discussion is relatively brief and straightforward, some authors prefer to combine it with the Results section, creating a section called Results and Discussion.)

Open the Discussion section with a clear statement of the support or nonsupport for your original hypotheses, distinguished by primary and secondary hypotheses. If hypotheses were not supported, offer post hoc explanations. Similarities and differences between your results and the work of others should be used to contextualize, confirm, and clarify your conclusions. Do not simply reformulate and repeat points already made; each new statement should contribute to your interpretation and to the reader's understanding of the problem.

Your interpretation of the results should take into account (a) sources of potential bias and other threats to internal validity, (b) the imprecision of measures, (c) the overall number of tests or overlap among tests, (d) the effect sizes observed, and (e) other limitations or weaknesses of the study. If an intervention is involved, discuss whether it was successful and the mechanism by which it was intended to work (causal pathways) and/or alternative mechanisms. Also, discuss barriers to implementing the intervention or manipulation as well as the fidelity with which the intervention or manipulation was implemented in the study, that is, any differences between the manipulation as planned and as implemented.

Acknowledge the limitations of your research, and address alternative explanations of the results. Discuss the generalizability, or external validity, of the findings. This critical analysis should take into account differences between the target population and the accessed sample. For interventions, discuss characteristics that make them more or less applicable to circumstances not included in the study, how and what outcomes were measured (relative to other measures that might have been used), the length of time to measurement (between the end of the intervention and the measurement of outcomes), incentives, compliance rates, and specific settings involved in the study as well as other contextual issues.

End the Discussion section with a reasoned and justifiable commentary on the importance of your findings. This concluding section may be brief or extensive provided that it is tightly reasoned, self-contained, and not overstated. In this section, you might briefly return to a discussion of why the problem is important (as stated in the introduction); what larger issues, those that transcend the particulars of the subfield, might hinge on the findings; and what propositions are confirmed or disconfirmed by the extrapolation of these findings to such overarching issues.

Result and discussion should be presented in the same part, clearly and briefly. Discussion part should contain the benefit of research result, not repeat result part. Result and discussion part can be written in the same part to avoid extensive quotation.

Table 1. Table Title

No	Description	Information
1	Description 1	Information 1
2	Description 2	Information 2
3	Description 3	Information 3

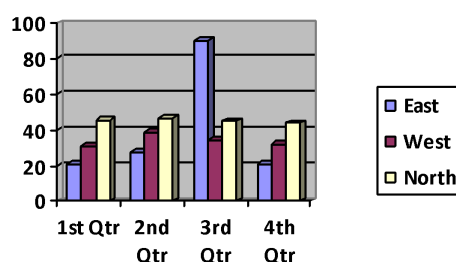


Figure 1. Figure Title

Conclusion / الخلاصة / Simpulan

Conclusions should answer the objectives of research. Tells how your work advances the field from the present state of knowledge. Without clear Conclusions, reviewers and readers will find it difficult to judge the work, and whether or not it merits publication in the journal. Do not repeat the Abstract, or just list experimental results. Provide a clear scientific justification for your work, and indicate possible applications and extensions. You should also suggest future experiments and/or point out those that are underway.

References / المراجع / Daftar Rujukan

Chaer, Abdul. *Linguistik Umum*. Jakarta: Rineka Cipta, 2003. (← **Book**)

Boudelaa, Sami, and William D. Marslen-Wilson. "Aralex: A lexical database for modern standard Arabic." *Behavior Research Methods* 42.2 (2010): 481-487. <https://link.springer.com/article/10.3758/BRM.42.2.481>

(← **International Journal**)

Hamzah, Hamzah, Abd Fattah, and Boukhari Khaira. "Students' Responses and Perceptions in Learning Strategy of Ilmu al-Badi Based on Mind Maps l Istijabat al-Talabah wa Tasawuratihim fi Tatbiq Istiratijiyyah Ta'lim 'Ilmi al-Badi'al-Qaimah 'ala al-Kharait al-Dzihniyyah." *Jurnal Al Bayan: Jurnal Jurusan Pendidikan Bahasa Arab* 14.2 (2022): 513-533. <http://ejournal.radenintan.ac.id/index.php/albayan/article/view/14275>

(← **National Journal**)

Afiah, Nur, et al. "Students 'Reflective Thinking on Teachers 'Feedback at Ma'had Al Jamiah Program in IAI DDI Polewali Mandar." *Proceedings of the 6th Batusangkar International Conference, BIC 2021, 11-12 October, 2021, Batusangkar-West Sumatra, Indonesia*. 2022.

<https://eudl.eu/doi/10.4108/eai.11-10-2021.2319479>

(← **International**

Conference Proceeding)

Hamzah, Hamzah. *Learning Strategies for Arabic Grammar in Understanding the Heritage Books at Allo Biqar Pambusuang Foundation, Polewali Mandar, West Sulawesi*. Diss. Universitas Islam Negeri Maulana Malik Ibrahim, 2019.

<http://etheses.uin-malang.ac.id/15623/> (← **Dissertation**)

Rice, J. "Poligon: A System for Parallel Problem Solving", *Technical Report*, KSL-86-19, Dept. of Computer Science, Stanford Univ, 2014. (← **Report**)

Ivey, K.C. *Citing Internet sources* URL <http://www.eei-alex.com/eye/utw/96aug.html>. (2 September 2012) (← **Website**)

Note:

1. The article is research-based or thought-based in Arabic linguistics and Arabic teachings which is not published elsewhere either in print or online.
2. Reference should be written according to the format of reference. Articles are required to use reference management (Mendeley or Zotero).
3. The English/Indonesia manuscript should be typed in Word document with *Times New Roman* sized 12, 1.5 space, on A4 sized paper. And The Arabic manuscript should be typed in *Sakkal Majalla* with font size 18, 1.5 space, on A4 sized paper. Margin right-top-left-down 3 cm.
4. The manuscript is 4000-7000 words in length.
5. It must be used footnote. Type of citation is Turabian style/MLA (Modern Language Association) style.
6. 75% of primary referrals are at least 15 journals (national/international journals) which published not more than 5 years. Primary references can be from; journals, proceedings, research reports, patents, standards, historical documents, research books, etc. And 25% (5 literatures) secondary literature (internet, books published not more than 10 years).