



SAILING INSTRUCTIONS (SIs)

WineWorks Marlborough Wine Race

Saturday 31 January 2026

(Backup date Sunday 1st February)

Inshore or Offshore Yacht Race

Queen Charlotte Sound & Cook Strait

The Organising Authority is the Waikawa Boating Club (Inc)

PO Box 52, Picton 7250

+64 3 573 6798



For further information please contact the Event Organiser events@waikawaboatingclub.co.nz The notation '[NP]' in a rule of the sailing instructions (SIs) means that a boat may not protest another boat for breaking that rule. This changes RRS 60.1(a)

1 RULES

- 1.1** The event is governed by the rules as defined in The Racing Rules of Sailing.
- 1.2** The Yachting New Zealand Safety Regulations Part II shall apply as follows:
 - Inshore Race – Race Category 4
 - Offshore Race – Race Category 4 modified
- 1.3** All keel boats must be compliant with the Category requirements of that race
- 1.4** Boats competing in the Offshore Race are required to complete the safety equipment checklist and declaration by the briefing.
- 1.5** Should there be any conflict between the Notice of Race (NOR) and the Sailing Instructions (SIs) the SIs shall prevail. This changes RRS 63.7
- 1.6** Boats with movable ballast, in the form of canting keel or water ballast may move that ballast to increase or decrease weight, or to change trim and stability. This changes RRS 51. RRS 52 shall not apply to the adjustment of canting keel or water ballast.
- 1.7** Powered winches either electric or hydraulic are permitted. This changes RRS 52.
- 1.8** Marlborough district Bylaws dictating the proximity to vessels over 500 Tonnes.
- 1.9** Appendix T, Arbitration will apply.
- 1.10** All Boats are required to operate a PredictWind tracker on a smartphone or similar device whilst racing. Guidance and help will be given at the briefing.

2 CHANGES TO SAILING INSTRUCTIONS

- 2.1** Any change to the sailing instructions will be posted before 2000 the day before it will take effect.
- 2.2** Any change to the schedule to use the backup date of Sunday 1st February, will be posted by 1200 Thursday 29 January
- 2.3** Changes to a sailing instruction may be made on the water by notifying competitors and on VHF channel 77 (Inshore) channel 1 (offshore). The signal boat will require confirmation from each boat that they have received the change.

3 COMMUNICATIONS WITH COMPETITORS

- 3.1** Notices to competitors will be posted on the official notice board located at Waikawa Boating Club or emailed or text message to skippers
- 3.2** On the water, the race committee intends to monitor and communicate with competitors on VHF radio channel 77 for the start and will then monitor VHF channel 1
- 3.43** The following communications may be made by the race committee on VHF channel 77 or on VHF channel 1 after the start of a race, including:
 - Time checks, race area, schedule changes, location of race committee boat, alternate preparatory signals, courses, change of courses, shortening, postponement, abandonment, starting signals, recalls, times of finishers.
- 3.4** [DP] While racing except in an emergency, a boat shall not make voice or data transmissions and shall not receive voice or data communication that is not available to all boats.



4 CODE OF CONDUCT

4.1 [DP] Competitors and support persons shall comply with reasonable requests from race officials.

5 SIGNALS MADE ASHORE

5.1 Signals made ashore will be displayed at Waikawa Boating Club flagpole.

5.2 When flag AP is displayed ashore, '1 minute' is replaced with 'not less than 60 minutes' in Race Signals AP.

6 SCHEDULE OF RACES & CLASS FLAGS

<i>Day/Date</i>	<i>Class</i>	<i>Number of races</i>	<i>Time of First Warning Signal</i>	<i>Class Flag</i>
31/01/2026	Inshore	1	09:25	Fluoro Yellow
31/01/2026	Offshore	1	09:25	Fluoro Pink

7 RACING AREA

7.1 The racing area is:

Inshore Race -the inner Marlborough Sounds

Offshore Race -the outer Marlborough Sounds and Cook Strait

8 COURSES

8.1 The diagrams in SIs Addendum B shows the courses, the order in which marks are to be passed, and the side on which each mark is to be left.

9 MARKS

9.1 Turning mark descriptions are shown in Addendum B - Courses.

10 OBSTRUCTIONS

10.1 All ferries and ships over 500 tonnes shall be classed as an obstruction.

10.2 (SP) There are specific "Moving Prohibited Zones" around ships over 500 tonnes in the Marlborough Sounds. No vessel shall enter the zone around the ships, which extends 500 meters ahead, 50 meters down either side and 50 meters astern. This is a Marlborough District Council (MDC) Navigational bylaw.

10.3 (SP) In the event of a complaint from a ferry(ship) pilot/master or harbour master that identifies a boat that did not abide by the rules as in 1.6. the impeding named vessel (s) will be scored DNE for that race.

11 THE START

- 11.1 The starting line is between a staff displaying an orange flag on the signal boat at the starboard end and a port-end starting mark as described in SIs Addendum B
- 11.2 **The race officer will communicate with the fleet at 0830hrs by VHF Ch77 (Inshore) and CHF Ch1 (Offshore) with the designated starting area and course.**
- 11.3 If any part of a boat's hull is on the course side of the starting line at her starting signal and she is identified, the race committee will attempt to Broadcast her name and/or sail number on VHF channel 77 (Inshore) or VHF channel 1 (Offshore). Failure to make a broadcast, failure of her to hear such a broadcast, or the order in which boats are broadcast will not be grounds for a request for redress. This changes RRS 61.4(b)1.
- 11.4 A boat that does not start within 20 minutes after her starting signal will be scored Did Not Start without a hearing. This changes RRS A5.1 and A5.2.
- 11.5 The Offshore Race requires a minimum of 4 entries for it to be run.

12 THE FINISH

- 12.1 The finishing line is between the signal boat displaying a blue flag and a finishing mark described in Addendum B
- 12.2 **[DP]** If the signal boat is absent when a boat finishes, she shall report her finishing time, and her position in relation to nearby boats, to the race committee at the first reasonable opportunity.

13 PENALTY SYSTEM

- 13.1 For the Inshore and Offshore race, RRS 44.1 is changed so that the Two-Turns Penalty is replaced by the One-Turn Penalty

14 TIME LIMITS

- 14.1 The Time Limit for the first boat to sail the course will be the earlier of 5 hours 30 minutes OR 1530 Saturday 31 January.
- 14.2 Boats failing to finish by 1630 Saturday 31 January will be scored Did Not Finish without a hearing. This changes RRS 35, A4 and A5.
- 14.3 The time limit applies to both the Inshore and Offshore races.

15 HEARING REQUESTS

- 15.1 The protest time limit is 60 minutes after the last boat in that race finished.
- 15.2 Hearing request forms are available from a race official.
- 15.3 Parties to any hearing will be notified of a hearing within 5 days of the protest time limit

16 SCORING

- 16.1 The scoring system is as follows: The boats TCF (Handicap) will be assigned for the event and the decision of the handicapper will be final.



17 SAFETY REGULATIONS

- 17.1 When the signal boat is on station boats are required to call in on VHF 77 (Inshore) or Ch1 (Offshore) confirming intention to race and persons on board.
- 17.2 A boat that retires from a race shall notify the race committee at the first reasonable opportunity on VHF channel 77 or VHF channel 1.

18 EQUIPMENT AND MEASUREMENT CHECKS

- 18.1 A boat or equipment may be inspected at any time for compliance with safety requirements, notice of race and sailing instructions.

19 PRIZES

- 19.1 Prizes will be given at prize giving.

20 RISK STATEMENT

- 20.1 RRS 3 states: 'The responsibility for a boat's decision to participate in a race or to continue to race is hers alone.' By participating in this event each competitor agrees and acknowledges that sailing is a potentially dangerous activity with inherent risks. These risks include strong winds and rough seas, sudden changes in weather, failure of equipment, boat handling errors, poor seamanship by other boats, loss of balance on an unstable platform and fatigue resulting in increased risk of injury. **Inherent in the sport of sailing is the risk of permanent, catastrophic injury or death by drowning, trauma, hypothermia or other causes.**

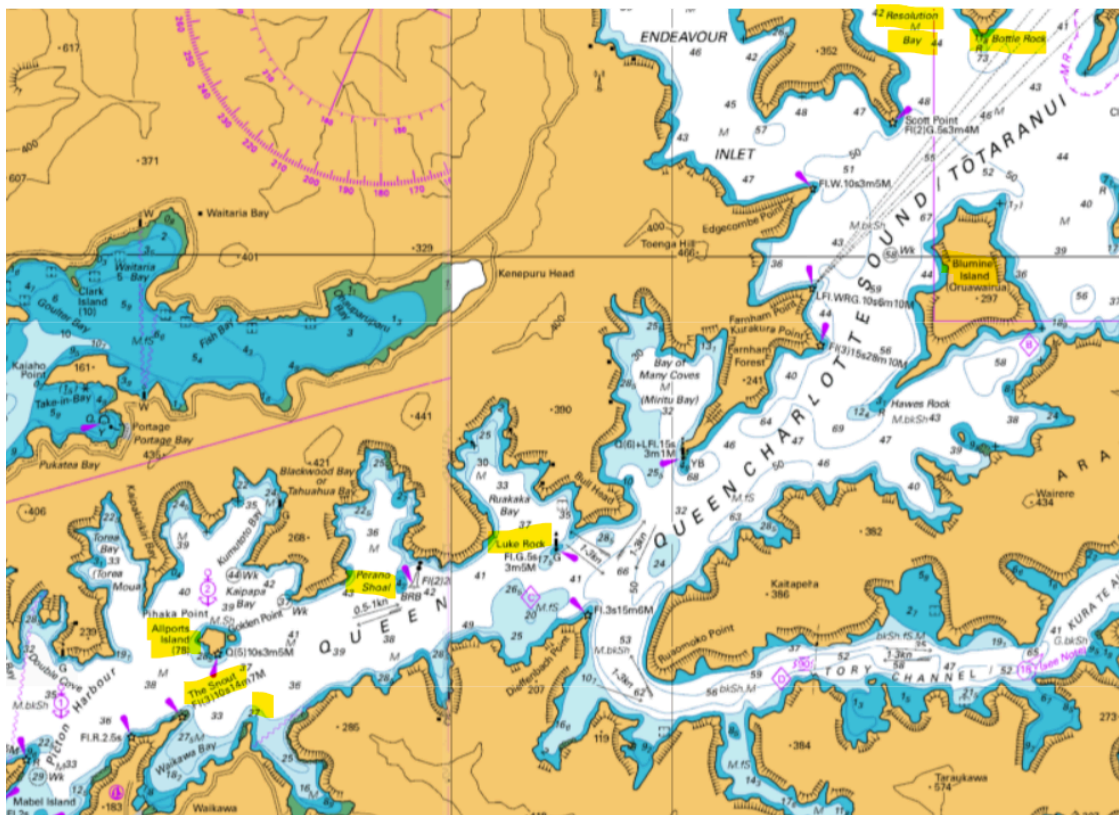
21 INSURANCE

- 21.1 Each participating boat shall be insured with valid third-party liability insurance with a minimum cover of \$5,000,000 per incident or the equivalent.



Addendum B Courses *Inshore Race*

Course	Course Description (P) leave the mark to Port (S) leave the mark to Starboard	Approx Distance (Nm)
A	Start – The Snout Finish – Bottle Rock (BR) Resolution Bay	11
B	Start – The Snout – Allports Island (S) – northern 5kt marker at Karaka Point (P) – Luke Rock (S) - Finish – Bottle Rock (BR) Resolution Bay	15
C	Start – Perano Shoal – Luke Rock (S) – Finish – Bottle Rock (BR), Resolution Bay	9
D	Start – Luke Rock Finish – Bottle Rock (BR), Resolution Bay	8
E	Start – The Snout – Allports Island (S) – Luke Rock (S) – Blumine Island (P) – Finish – Bottle Rock (BR), Resolution Bay	15





Addendum B Courses Offshore Race

Course	Course Description (P) leave the mark to Port (S) leave the mark to Starboard	Approx Distance (Nm)
1	Start - North Cardinal Mark north of Motuara Island (S) - The Twins (S) - southern point of Long Island (S) – Finish Bottle Rock, Resolution Bay	13
2	Start - southern point of Long Island (S) - The Twins (P) - North Cardinal Mark north of Motuara Island (P) - Finish Bottle Rock, Resolution Bay	10
3	Start - southern point of Long Island (S) - White Rocks (P) - Waihi Point Way Point ¹ (P) - Motuara Island (P) - Finish Bottle Rock, Resolution Bay	20
4	Start - Long Island (P) - Waihi Point Way Point ¹ (S) - White Rocks (S) - The Twins (S) - southern point of Long Island (S) - Finish Bottle Rock, Resolution Bay	20
5	Start - North Cardinal Mark north of Motuara Island (S) - The Twins (S) - Motungarara island (S) -southern point of Long Island (S) - Finish Bottle Rock, Resolution Bay	14
6	Start - North Cardinal Mark north of Motuara Island (S) - White Rocks (P) - Waihi Point Way Point ¹ (S) - White Rocks (S) - Motungaruru Island (S) - southern point of Long Island (S) - Finish Bottle Rock, Resolution Bay	26
7	Start - southern point of Long Island (P) - Motuara Island (P) - White Rocks (P) - Waihi Point Way Point ¹ (P) -White Rocks (P) - North Cardinal Mark north of Motuara Island - Finish Bottle Rock, Resolution Bay	25

Note 1: **Waihi Point Way Point is located at 41° 01' 18.74" S / 174° 19' 52.41" E**

Boats need to provide proof that their latitude and longitude on rounding was beyond the latitude and longitude of the waypoint and they have rounded the mark as prescribed.

A photo or screen shot from the boats chart plotter, or navigation app will be sufficient. This is to be sent as a text to the Race Committee 021-1611620 or via WhastApp to Teresa Zandvliet.



