

Article Title, Capitalize Each Word (style: TITLE)

First Author, Second Author² (11pt Bold) (style: author)

¹ Affiliation: (example) Civil Engineering Dept., Universitas Ibn Khaldun Bogor

² Affiliation: (example) Civil Engineering Dept., Institut Teknologi Nasional (style: address)

Email: first.author@xmail.com; second.author@xmail.com (email: corresponding author) (style: address)

ABSTRACT (11pt BOLD) (style: Heading1)

This writing instruction used in the abstract of article on Jurnal Komposit: Jurnal Ilmu-ilmu Teknik Sipil, Civil Engineering Department, Faculty of Engineering and Science, Universitas Ibn Khaldun Bogor. Abstract written in 1 (one) paragraph, 1 (one) coloumn style and consist of 150 – 250 words. Abstract should be written in English (Abstract in Bahasa Indonesia is optional). Keywords written under the abstract, arranged in timely order, separated by comma.

Key words: abstract, key words, writing instruction.

Submitted:	Reviewed:	Revised	Published:
25 Jan 20XX	15 Feb 20XX	18 Feb 20XX	01 August 20XX

INTRODUCTION (style: Heading1)

Articles to be published in the **Jurnal Komposit: Jurnal Ilmu-ilmu Teknik Sipil** are compiled from articles prepared by the author and sent to the editorial board of the **Jurnal Komposit: Jurnal Ilmu-ilmu Teknik Sipil** of the Civil Engineering Study Program, Faculty of Engineering and Science, Ibn Khaldun University, Bogor. The stages of the assessment are through the Chief Editor and then to the Section Editor. From the Section Editor with Blind Preview, it is sent to the Reviewer with the appropriate sub-field of expertise, and so on. Only articles that meet the requirements may be published in a Composite Journal.

Articles must be written on A4 size paper and in the format Left margin 2.5 cm Right margin 2.0 cm Bottom margin 2.0 cm and top margin 2.5 cm. Writing the contents of the article using the 11pt Times New Roman font with a 2 (two) column style. Articles consist of 6 – 12 pages. Articles can be written in Indonesian or English. Each paper consists of 6 - 12 pages (3,000-4,000 words) including figures and tables. For colored images or graphics, the color will still be maintained in the **Jurnal Komposit: Jurnal Ilmu-ilmu Teknik Sipil** of the Civil Engineering Study Program, Faculty of Engineering and Science, Ibn Khaldun University, Bogor IN ON-LINE AND PRINTED FORM. (style: Normal)

Articles submitted by authors are made without page numbers, in the following order:

INTRODUCTION, (style: Heading1)

Consists of background, research objectives, problem formulation and a review of previous research. (style: Normal)

RESEARCH METHOD, (style: Heading1)

If necessary, each sub-heading can consist of sub-headings.

Research location and duration (style: Heading2)

Flowchart and Methodology (style: Heading2)

Flowchart and methodology

RESULT AND DISCUSSION (style: Heading1)

Sub heading (if necessary)

Description of Research Result (1) (style: Heading2)

Research result can be described in this sub heading. Research result must be written in narration.

Description of Research Result (1) (style: Heading2)

Research result can be described in this sub heading. Research result must be written in narration.

CONCLUSSION (style: Heading1)

The conclusion is written with the appearance of the description paragraph (description-exposition).

ACKNOWLEDGMENT (if necessary)

LIST OF NOTATIONS (if necessary)

REFERENCES

GENERAL INSTRUCTION (style: Heading1)

Articles consist of 6 – 12 pages. Each paper consists of 6 - 12 pages (3,000-4,000 words) including figures and tables. For colored images or graphics, the color will still be maintained.

Subtitle writing instructions

Subtitles are written in bold with Times New Roman (bold) and arranged left aligned without numbers and underlines.

Instructions for writing citations in the literature review

Every library that becomes a reference in writing journal articles must be cited and written in text. The writing of citations in the literature review refers to the APA style, where the citation shows the author's name and year of publication. It is recommended that the authors use a reference management application such as Mendeley (www.mendeley.com) or Zotero (www.zotero.org).

Table and Figure Format

The table title is written above the table. **The table displayed in horizontal line only**, an example of a table display can be seen in Table 1 and Table 2.

The table is created with the table generator that is available in Ms. Words. **It is not recommended to convert the table view into an image.**

Images should be displayed in image formats (JPEG, GIF, BMP, PNG, TIFF). The image title is placed below the image body. Small images can be placed in line with text, while large images can be placed in the middle. Use continuous section break

to convert 2 columns view to 1 column view. Sources of tables, figures or graphics must be shown as shown in the examples below.

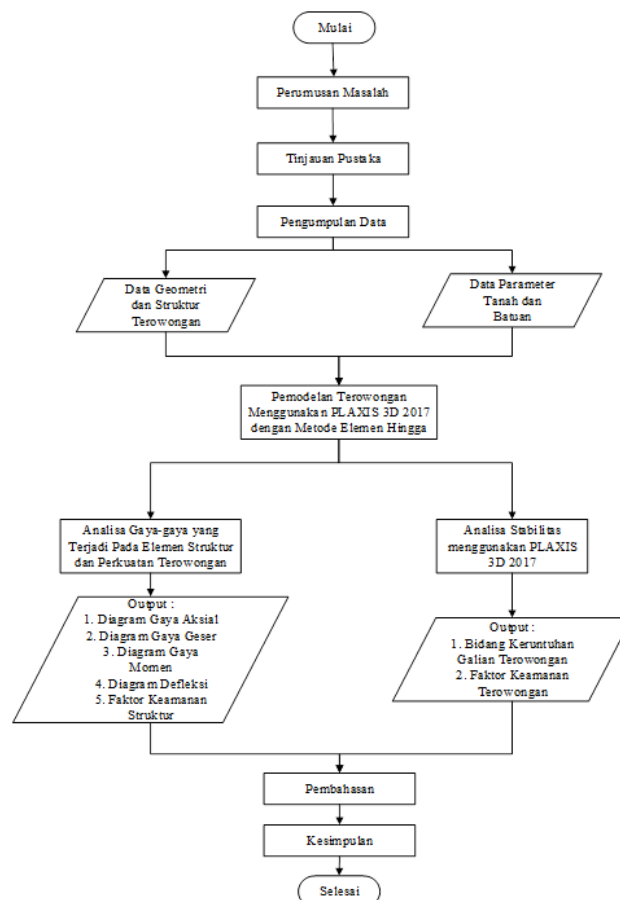


Figure 1. Example of on body text figure (style: caption)



Figure 2. Example of figure on 1 column format (style: caption)
(Source: figure source, 20YY)

Tabel 1. Example of 1 column format table

Rock Type	γ_{Unsat} (kN/m ³)	E_{rm} (kN/m ²)	GSI	$ \sigma_{ci} $ (kN/m ³)	ν'	m_i
Volcanic Rock	24,7	50900	58	60000	0,31	19
Lava Andesite	27,5	40000	75	70000	0,31	25

(source: table source, 20YY)

Tabel 2. Example of 1 column format table (body text table)

No.	Code	Damage Type	Seq.	Deduct Value
1	61	Blow up	2	8
2	62	Corner Break	10, 13, 24, 27	18
3	63	Cracks Longitudinal, Tranverse, and Diagonal	9, 15, 18, 19, 20, 21, 30	32
4	64	Durability Cracking	1	1
5	67	Patching Large and Utility Cut	6, 9, 14, 27	20
6	74	Spalling Tranverse and Longitudinal Joint	17, 23, 28, 29	5
7	70	Scaling	25	4
Total Deduct Value (TDV)				84

(Source: table source, 20YY)

Instruction on Writing an Equation

Equation is written with *Equation Editor*, available on *MS Word*. Equation written on left align (Ctrl+L), equations are sequentially numbered which is placed at the end of the right margin.

Example:

$$\sigma'_1 = \sigma'_3 + \sigma_{ci} \left(m \frac{-\sigma'_3}{\sigma_{ci}} + s \right)^a \quad \dots (1)$$

$$m_b = m_i \exp\left(\frac{GSI-100}{28-14D}\right) \quad \dots (2)$$

σ'_1 = Major planar pressure on failure

σ'_3 = Major planar pressure on failure

σ_{ci} = Uniaxial compressive strength

REFERENCES (*Style: Heading1*)

Writing bibliography follows the **APA writing style**. All articles are sorted alphabetically by author's name. There are several examples of writing a bibliography following the APA style. (*text in bold is not required*)

Examples: Journal Article

Nenny, & Imran, H. Al. (2015). Uji Pemadatan Tanah Samaya sebagai Bahan Timbunan pada Bendungan Urugan. *Prosiding SNTT FODT*.
https://publikasiilmiah.ums.ac.id/bitstream/handle/11617/6251/8.SNTT_2015_submission_45.pdf?sequence=1&isAllowed=y

Perangin-angin, G. (2009). Studi Potensi Tanah Timbunan Sebagai Material Konstruksi Tanggul pada Ruas Jalan Negara Liwa - Ranau di Kabupaten Lampung Barat. *Rekayasa*, 13(2), 141–146.

Examples: Book

O'Bickel, J. (1996). *Tunnel Engineering Hand Book*. ISBN 978-1-4613-0449-4. Kluwer Academic, Massachusetts.

Tamin, O. Z., (2000). *Perencanaan dan Pemodelan Transportasi*. Edisi Kedua. Penerbit Institut Teknologi, Bandung. Bandung, pp.63-65.

Examples: Thesis/dissertation.

Sillanpaa, M. (2017). Studies on Washing in Kraft Pulp Bleaching. Faculty of Technology, *PhD Thesis*, Department of Process and Environmental Engineering, Oulu, University of Oulu, Finland, pp.100-105.