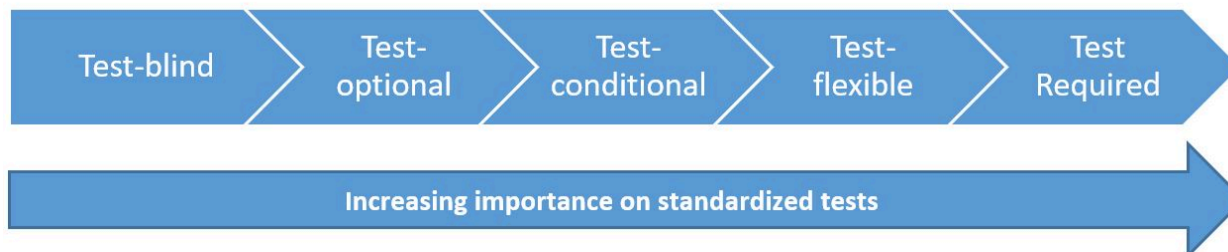


College Admission Test Policies Explained

Each college implements its own practices related to the use of entrance exams. The most recent information will always be found directly from that college's admission office.

Spectrum of Test Emphasis Policies in College Admissions



Test Policy	What does this mean?	Who is recommended to submit test scores?
TEST BLIND	Even if submitted, test scores will not be considered in the admissions or financial aid decision.	No one should submit scores, they will not be reviewed.
TEST OPTIONAL	If a student does not submit test scores, they will not be penalized when considered for admission or financial aid decisions.	Students who meet or exceed the average ACT/SAT scores published by that college campus for incoming freshmen.
TEST OPTIONAL with exceptions	In some cases, students are not required to submit test scores for general admission, however, scores may be required for specific programs, majors, groups, and/or scholarships.	Students who meet or exceed the average ACT/SAT scores published by that college campus for incoming freshmen. Students who are required to submit test scores for the specific program, major, group, and/or scholarship.
ACT/SAT REQUIRED	All students are required to submit test scores to be considered for admission and/or financial aid.	All students must submit test scores.

Selected Resources

- ACT - <https://www.act.org/>
- College Board - <https://www.collegeboard.org/>
- Fair Test - <https://fairtest.org/> list of colleges and their practices