

SS



**Belle Plaine Community School
District
Return to Learn Plan
2020-2021
On-site 5 Days Per Week**

This is a draft document subject to change.
Last Updates 8/31/2020

Outline

ON-SITE/FAMILY CHOICE

● Onsite Student Learning-----	2
● Family Choice Student Learning-----	3
● Face Coverings-----	4
● Temperature Screening-----	5
● Reporting COVID-19 Symptoms/Cases-----	6
● Technology-----	7
● Transportation-----	8
● Arrival/Drop-Off Procedures-----	9
● Volunteers/Visitors-----	10
● Meal Times-----	11
● Classroom Structure/Layout-----	12
● Hallways/Passing Times-----	13
● Recess-----	14
● Large Group Gatherings and Assemblies-----	15
● Cleaning of Facilities-----	16
● Signage-----	17

HYBRID

● District Decision-----	18
--------------------------	----

ONLINE

● Exclusive Online -----	19
● Attendance and Technology-----	20



ON-SITE/ FAMILY CHOICE

Student Learning

STUDENTS in grade Preschool-12th will return to **on-site August 31, 2020**, at the start of the 2020-2021 school year.

Regular, full days of school will be held with modifications implemented for student and staff safety. We will have an early out at 1 p.m. every Thursday first semester.

Spectators attending activities in the school building will be required to wear a face covering. Spectators will not be required to wear a face covering to outdoor activities due to the ability to social distance.



Family Choice

Under this plan, Belle Plaine Schools are open and offering on-site learning. An on-line learning option will be offered for Preschool-12th Grade students that would like to choose an alternative setting.

Families who choose to not send their students due to health concerns must register to participate in online learning as part of this model. Belle Plaine CSD will provide eligible students with online learning by a certified Belle Plaine teacher. Students will not be allowed to come and go different days unless the school district is in a hybrid model. Students staying home for online instruction will be online for a quarter and then may return to in person the next quarter. Every quarter parents will have the option to change their decision.

If you choose to participate in the Family Choice Learning Model, all students need to register online and notify the Belle Plaine Administration Office of your choice (319-444-3611).



Face Coverings

Face coverings (mask or shield) will be required for students and staff. Teachers or Administrators may give students permission to remove masks if social distancing is possible.

The district will provide:

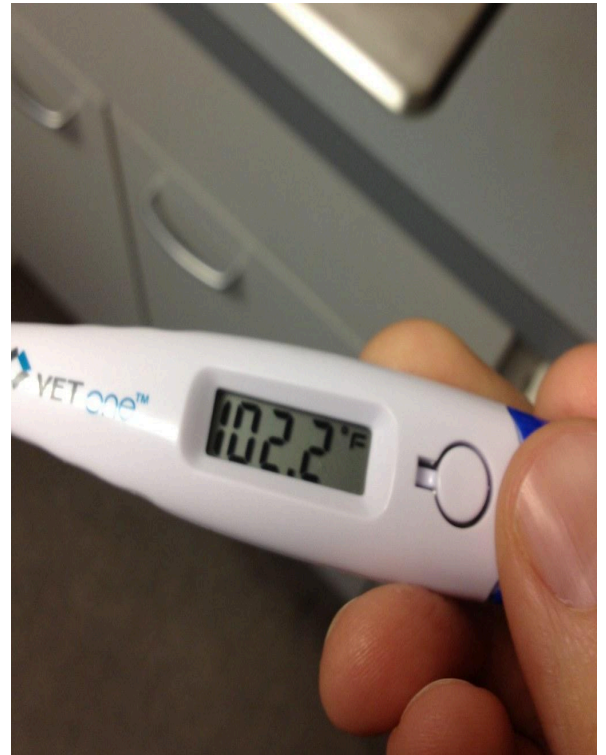
- One mask per student
- One mask and one face shield per staff member.



Temperature Screenings

STUDENTS will be required to have their temperature checked at home by their parents/guardians prior to reporting to school.

STAFF will be required to check their temperatures before reporting to work.



Reporting of COVID Symptoms/Cases

The Belle Plaine Administration will utilize guidance from the Iowa Department of Education, Benton County Department of Health, IDPH, the CDC, and other health care professionals to determine best practices for returning to school.

Students that are identified to have a positive case of COVID-19 must quarantine for 10 days and be symptom free before returning to school. The school will determine when you can return to school based on the data and symptoms.

Students who have symptoms but have not been tested must meet these criteria::

- no fever for at least 72 hours without the use of fever reducing medication

AND

- symptoms have improved (whatever the Covid symptom was that they were exhibiting)

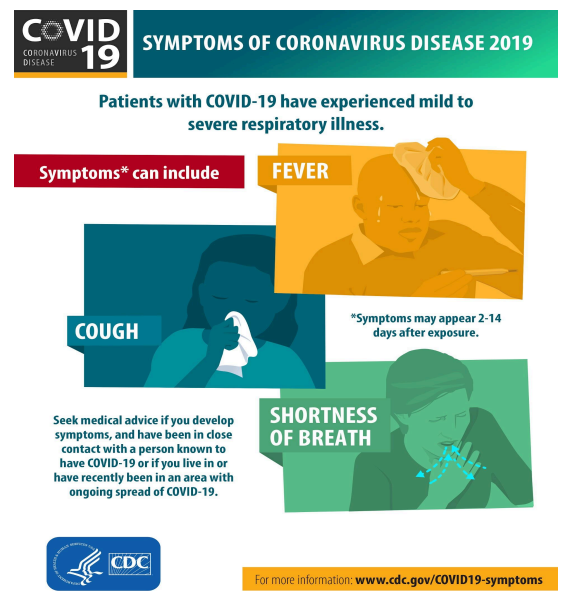
AND

- at least 10 days have passed since their symptoms first appeared.'

Anyone that was within 6 feet of this individual for 15 minutes or longer will also be asked to self-isolate at home for 14 days.

Students with a fever must remain home and have no fever for 72 hours (while taking no medication) before returning to school.

The school building will only be closed in situations of possible rampant spread of the virus or recommendations from the state or department of health.



Technology

Every student (3rd-12th Grade) will be assigned a Chromebook to help limit the exposure to COVID-19.

PK-2nd will have Ipads which will be disinfected everytime between student use.

Preschool will have access to ipads if needed.



If an elementary student is self-isolating or if school moves to exclusive online learning, students may take their device home to support online learning.

Transportation

All students and drivers will wear a face covering when riding the bus.

Buses will be disinfected after each route and bus capacity will be reduced. Social distancing will be implemented. Window and vents will be open to allow for ventilation and circulation whenever possible.



Hand sanitizer will be available on all buses.

Please note, routes may need to be adjusted if there is a shortage of drivers.

Bus Guidelines

- Drivers will exit the bus and stand outside as students load the bus (This does not apply to individual country bus stops)
- All Riders and drivers will wear masks at all times when riding in the bus
- No food or drink may be brought on the bus
- Be mindful of social distancing
- When possible, students in the same family need to sit together

Specialized Transportation

- Riders and drivers will wear masks at all times when riding in the suburban
- No food or drink may be brought in the suburban
- Cleaning and sanitation will occur before and after every rider is transported
- Social distancing will be practiced (one rider in each seat)



Learning Today for Living Tomorrow.

Arrival and Drop-Off

Kindergarten-6th grade parents/guardians will not be allowed to exit the vehicles during pick-up/drop-off. Students will exit the building out the **North Door** and proceed to their vehicle.



Preschool parents/guardians are allowed to walk students to the **Preschool Entrance (East Door)**. A school employee will meet you at the door. Parents/guardians will be allowed to wait outside the Preschool entrance to pick up students. No parents will be allowed into the school building.

JH/High School

All Junior High/High school students need to be picked up in the south parking lot. No vehicles other than school transportation will be allowed in the circle drive during pick up times.



Volunteers / Visitors

Non-essential visitors will not be allowed in the school buildings at this time. If a parent/guardians need to speak with a teacher, they need to make prior arrangements with the teacher to meet them at the office, or communicate by email, by phone or by Zoom.

This includes but is not limited to the following: volunteers, classroom guests, family members, lunch visitors, non-essential business visits such as classroom observations etc.

The private use of indoor facilities by community and private entities will not be permitted at this time. No youth sports activities in school buildings.

Please note: If you are a new family in the district, and are looking to register your child as a student at Belle Plaine, please visit our [website](#). Registration will only be online.



Meal Times

Students will eat meals in the cafeterias abiding by social distancing guidelines as much as possible.

Additional areas(i.e. classrooms) may be available to address social distancing needs.

Meal times will be staggered and self-serve stations will be discontinued.



Water Fountains

Regular water fountains will not be used. Bottle water fountains will still be available. Students may need to bring their own water from home.

Classroom Structure/Layout

Classrooms will be restructured to abide by social distancing guidelines as much as possible.

Students will be seated facing forward to limit exposure and all couches, bean bag chairs, throw cushions, etc., will not be available for student use.



Classrooms will contain hand sanitizer and other cleaning supplies to help us maintain a clean school environment for our students. Teachers will assist in cleaning during class and between classes. Classrooms will be completely cleaned at the end of each day and as needed during the day.

Hallways and Passing Times

Class times will be staggered as much as possible to accommodate social distancing guidelines during passing times.

Hallway interactions and proximity will be monitored.



Recess

One grade level will have recess at a time to accommodate social distancing guidelines.

Students will be required to disinfect their hands upon re-entering the building.

Toys and balls will be disinfected between groups of students using them. No toys, balls or other items from home will be permitted.



Large Group Gatherings/ Assemblies

When possible, class sizes will be reduced for physical education, band, and choir.

Student assemblies will not be held.

The number of students will be limited in common areas.



Cleaning of Facilities

Increased emphasis will be placed on cleaning and disinfecting schools on a daily and weekly basis.

Additional cleaning and sanitizing procedures will be in place throughout the school year. Examples include the following: Hand washing, disinfecting wipes, physical barriers added where needed, drinking fountains will be turned off, private water bottles only, and increased time for student handwashing.



Please note: More information will be provided at a later time as we receive further guidance and direction for local health officials.

Signage

All district buildings will have signs clearly posted regarding handwashing, symptoms, face coverings, visitor policy, and lunch procedures.



Hybrid

District Decision

If the district needs to reduce the number of students on-site, this option will be used.

Belle Plaine schools will have students Preschool-12th grades attend on-site learning; however, students would rotate days to reduce the number of students on-site at one time. In two weeks students will attend 5 days minimum (3 in one week and two in the other)

Students would attend school 50% on-site and 50% online. Students who are not at school that day will still complete online assignments and get online instruction.

Face Coverings will be required.

Please Note: More information will be provided at a later date on the details of this Hybrid Option if it is implemented.



Online

Online Learning Only

The determination of whether the district exclusively moves from **ON-SITE** to **ONLINE Learning** is made by Gov. Kim Reynolds, The Iowa Department of Health and the Belle Plaine Board of Directors.



Attendance and Technology

ATTENDANCE: will be mandatory and recorded.

Preschool-2nd grade students will receive online learning via Seesaw.

3-12 grade students will receive online learning via Google Classroom.

TECHNOLOGY: Every student 3-12 grade will be assigned a Chromebook.

PK-2 students will have ipads and may take them home if the school is exclusively online.

Preschool students will have access to ipads if needed.

If access to the Internet is a concern, please contact the Belle Plaine Administration Office, 319-444-3611.

Please Note: All Covid-19 related illnesses and family choices for education model will be kept confidential.

