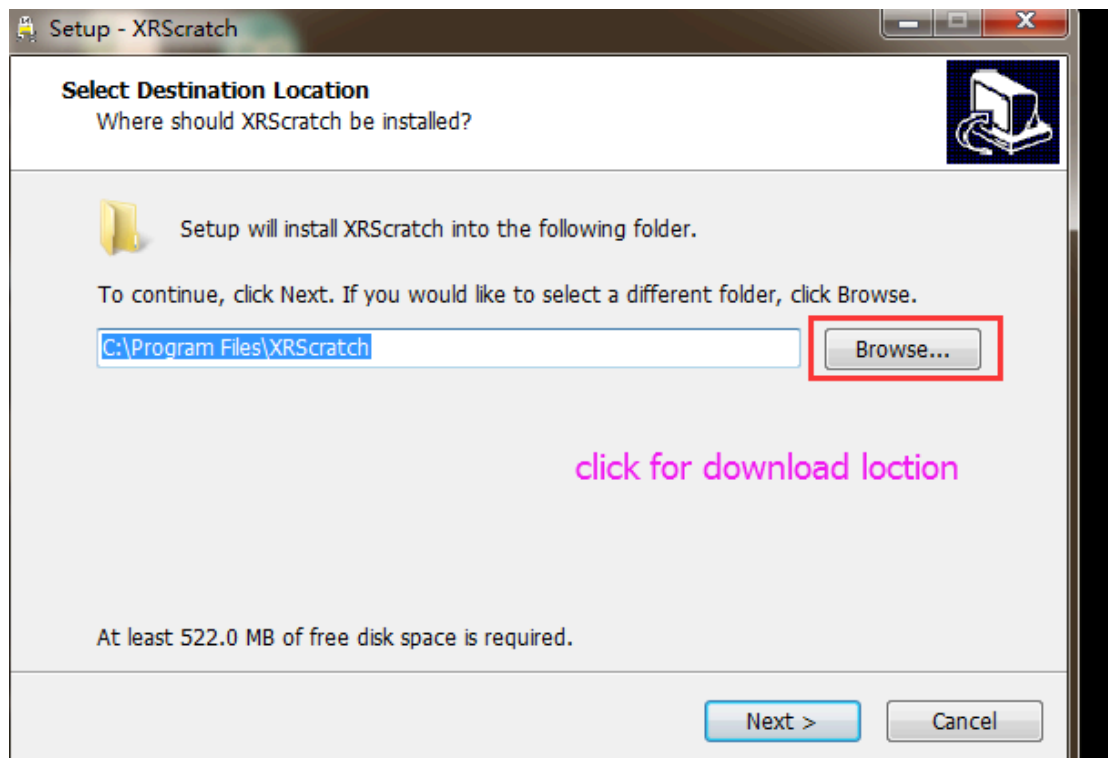
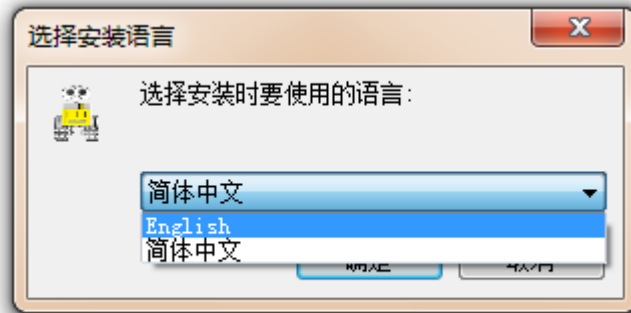


XRScratch software

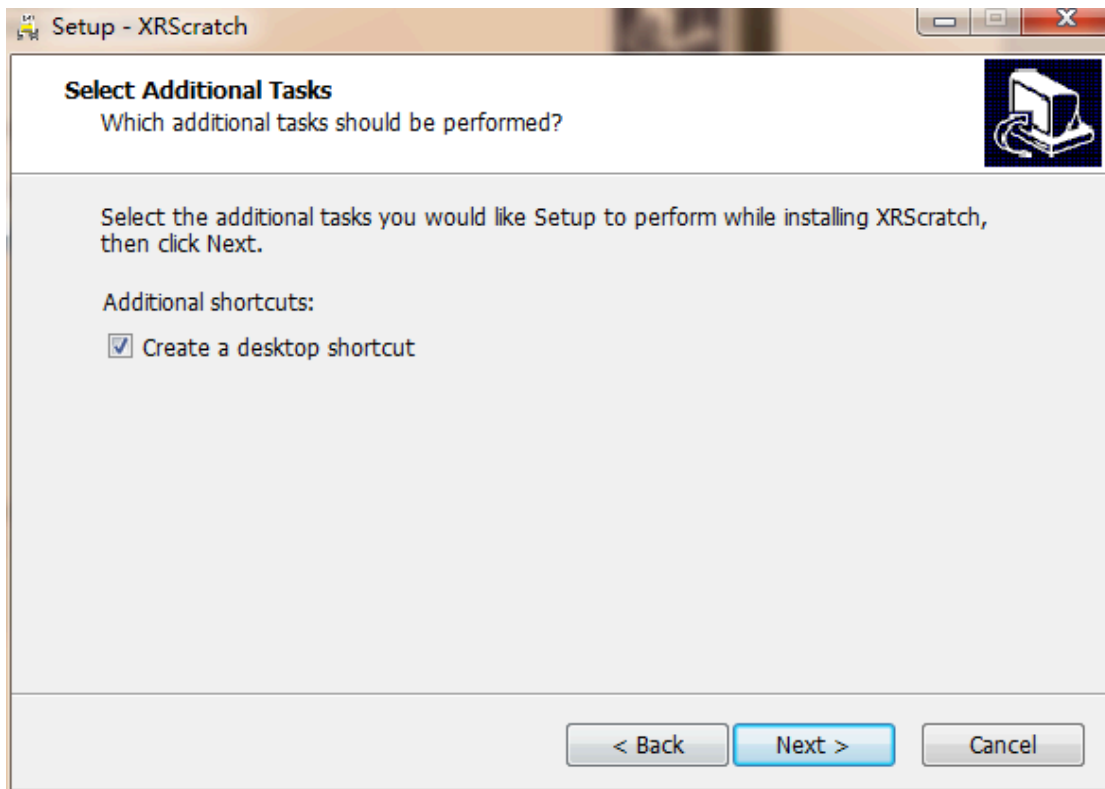


1.open it(you can download it on the product page)

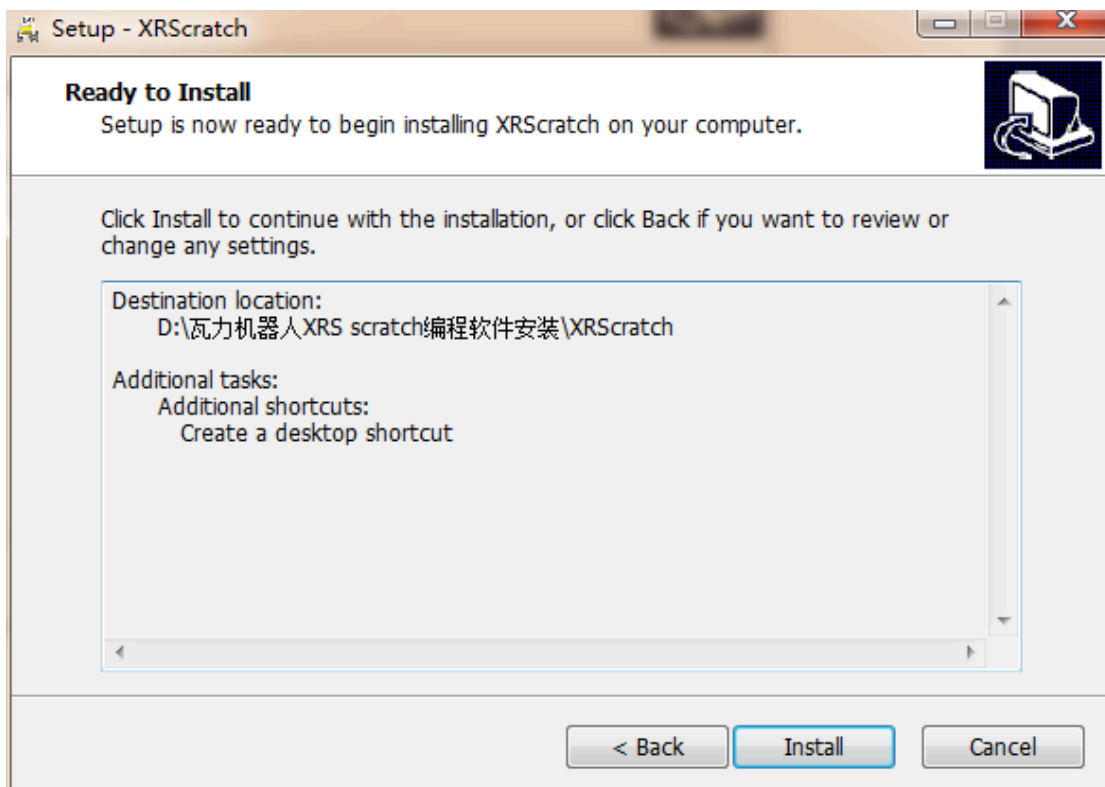
2.Choose language



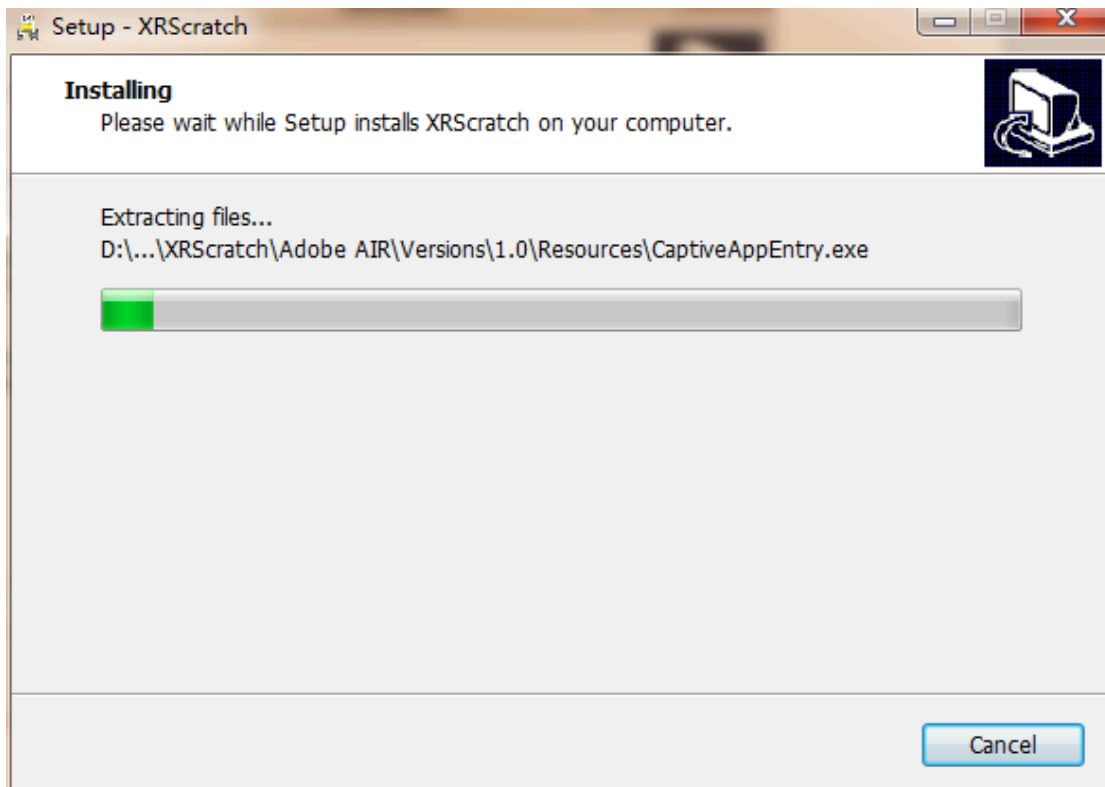
Then click next.



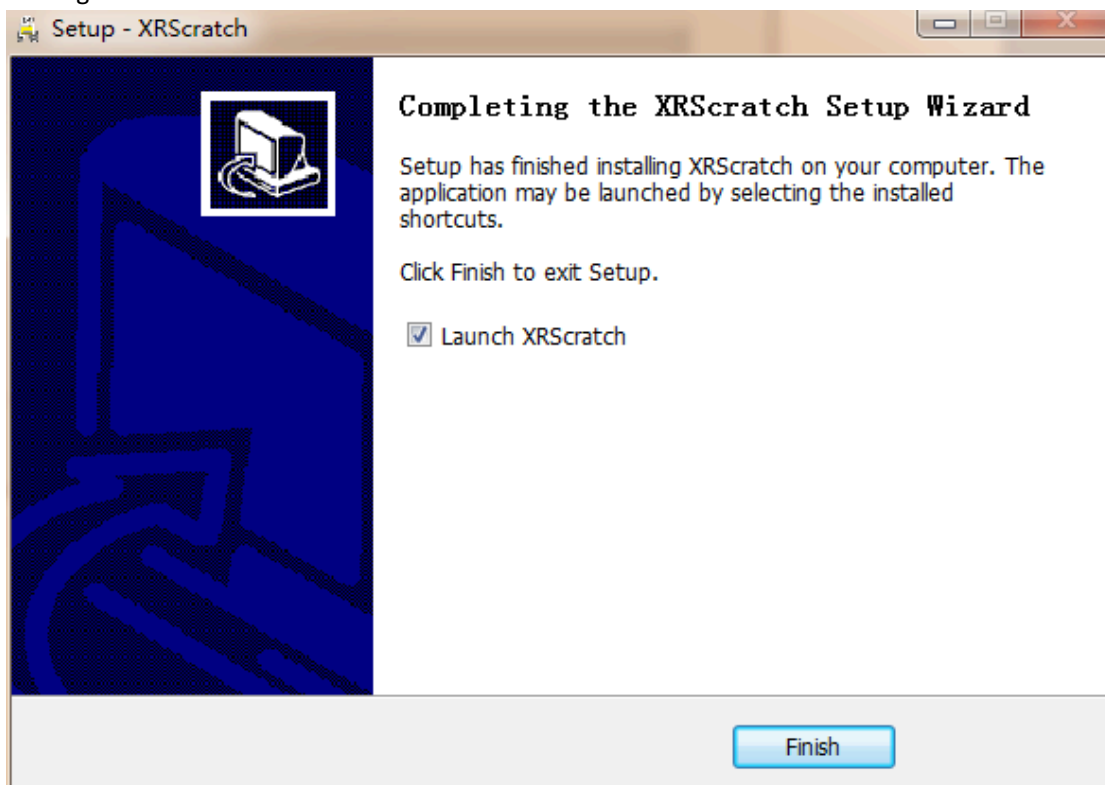
Click next



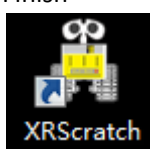
Install



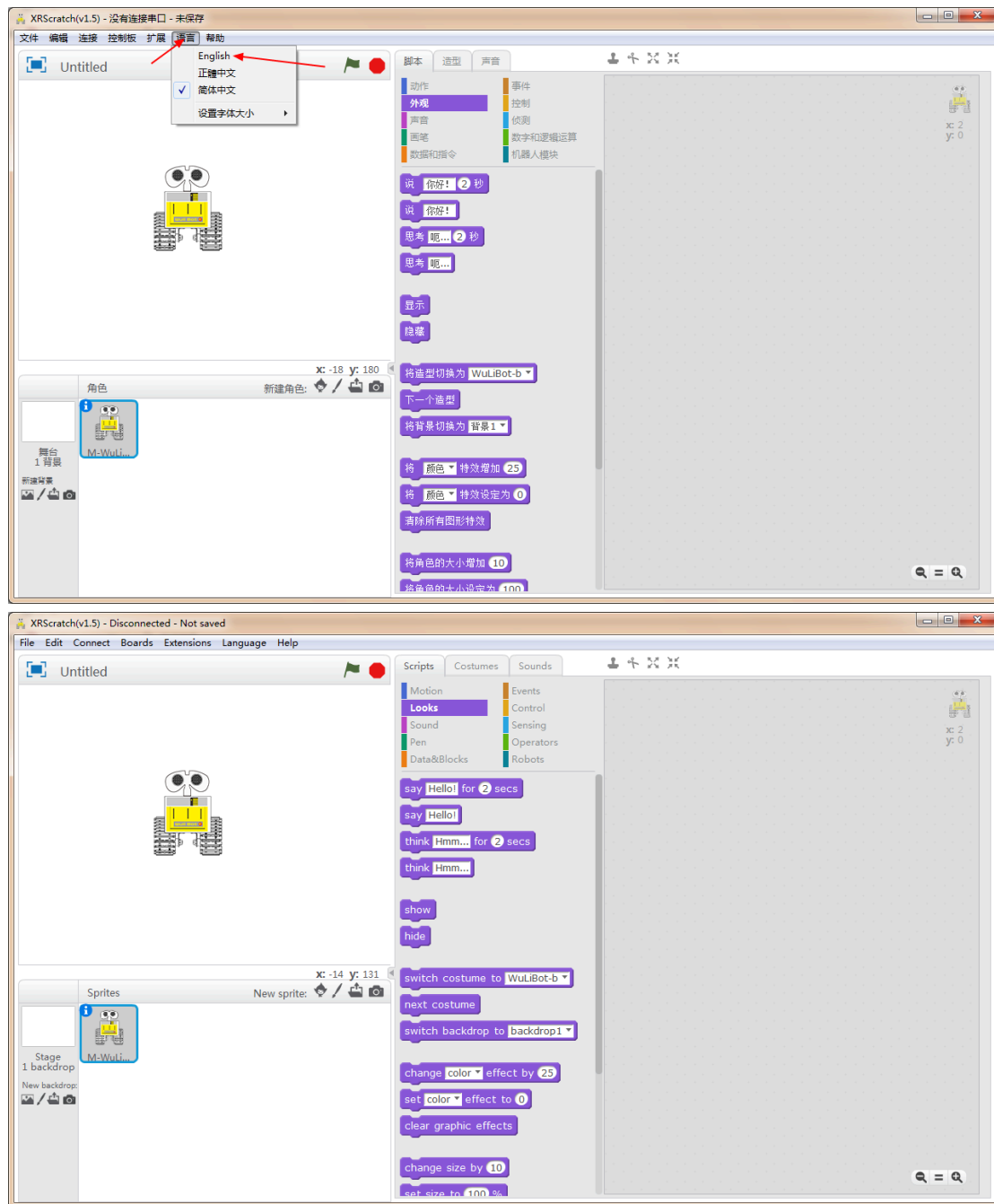
Waiting



Finish

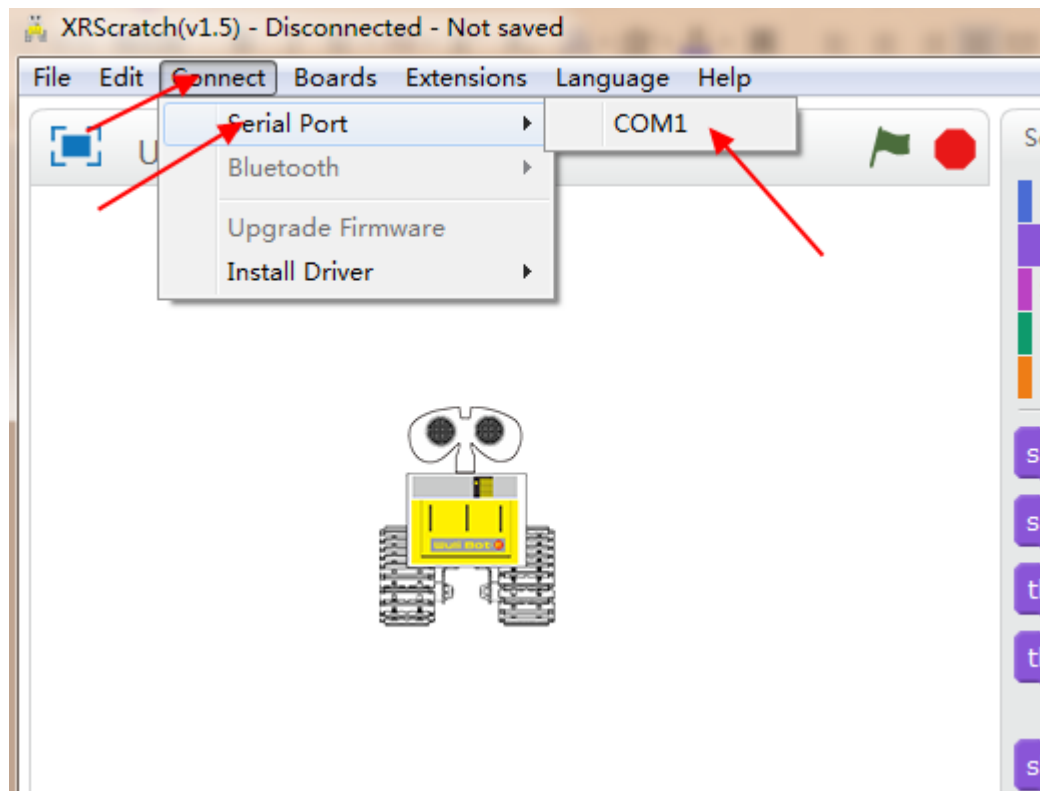


Follow the picture to change language

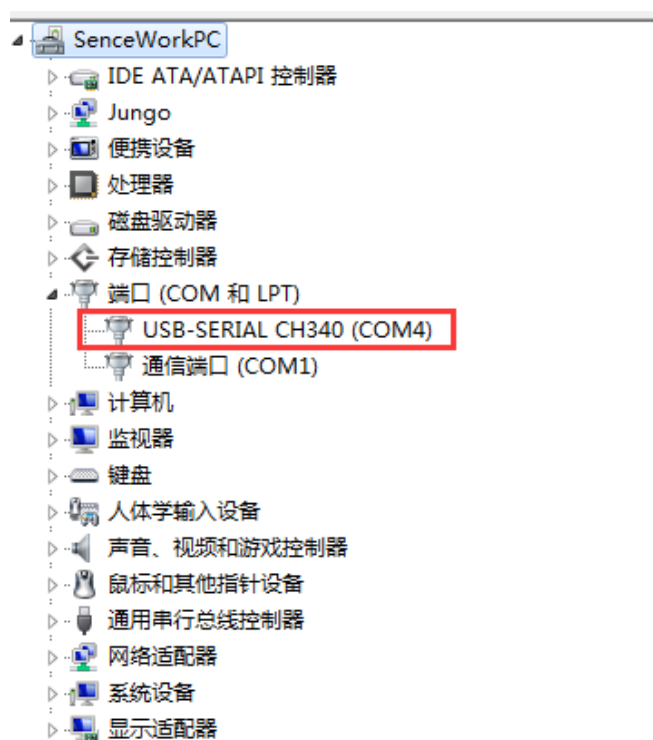


## How to connect WuLiBot?

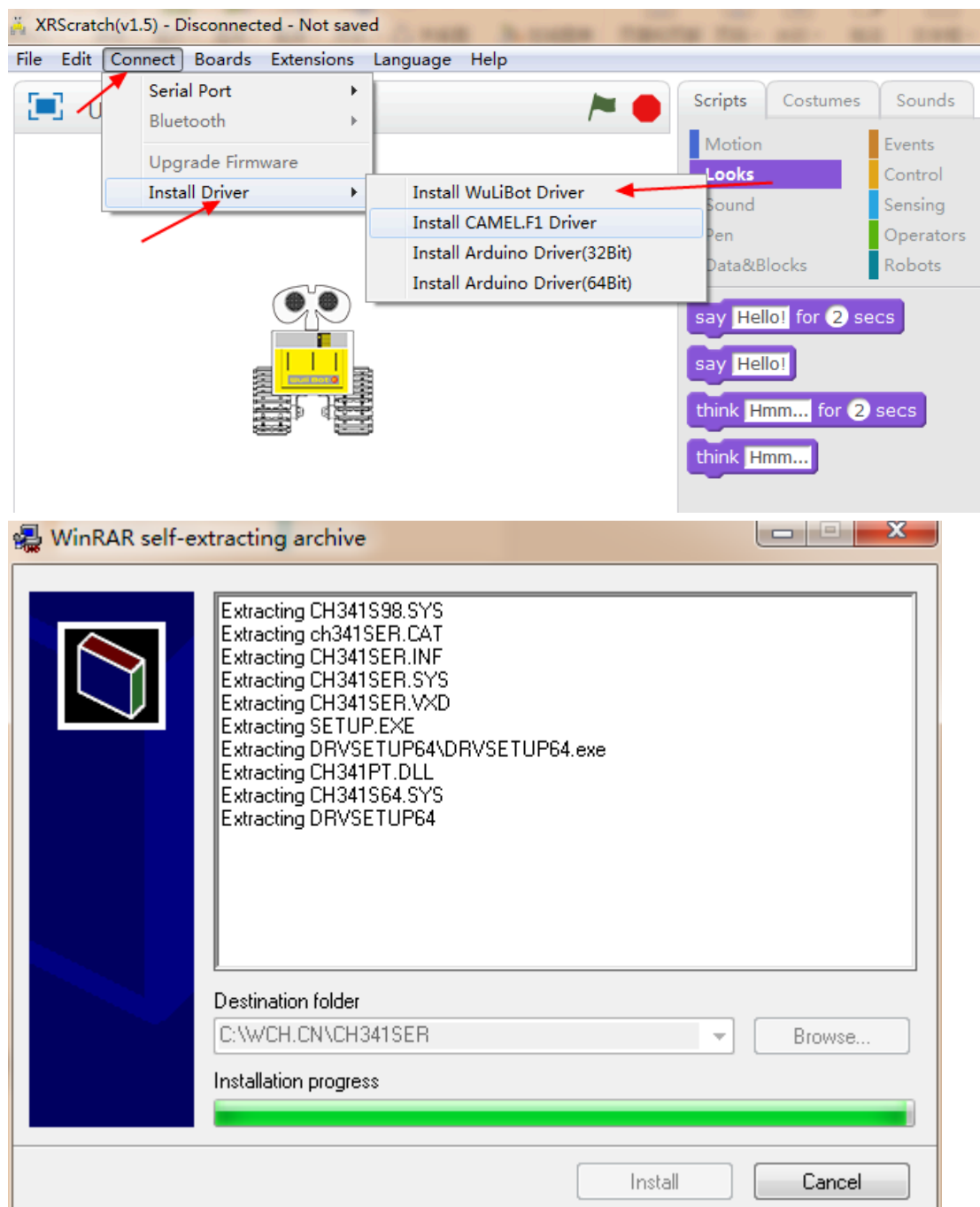
1. Using usb cable to connect the robot and your computer
2. Click connect

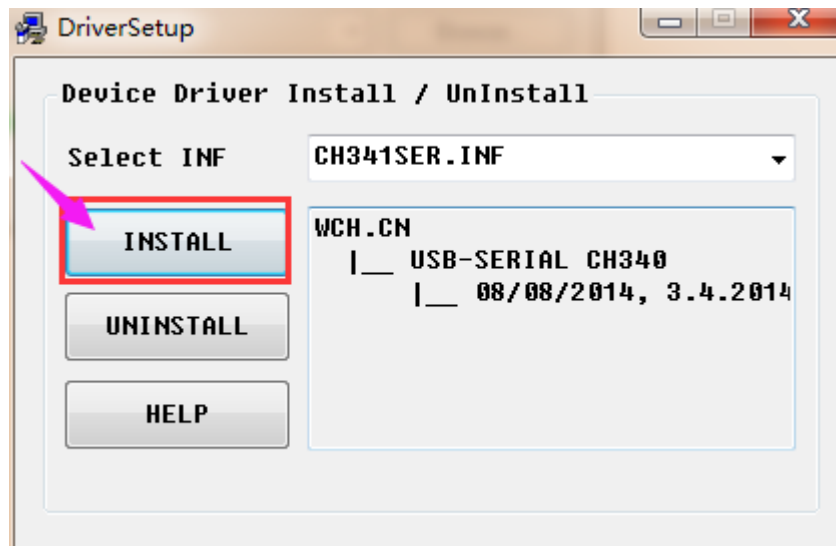


Different computer may have different Serial Port, you can open device manager to check out which port is the right connect port.



If you can not find out the right port to connect the robot, you need to install the driver to connect again.





Waiting, then finish.

