



**75. Inkwell by  
Heintz Art Metal Shop  
Buffalo, N.Y.,**

1906 to 1930

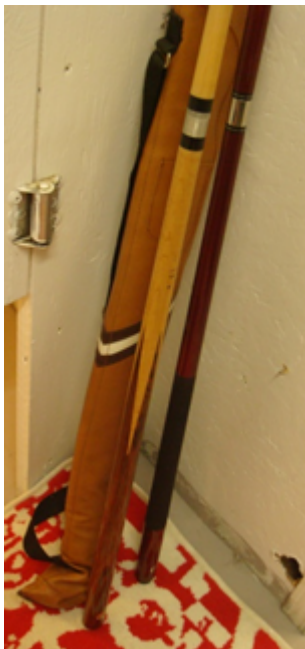
This Company made ashtrays, bookends, boxes, bowls, desk sets, vases, trophies and smoking sets of bronze with silver decoration. The best known pieces by this Company are made of copper, brass and bronze with silver. This inkwell is made of copper, silver flower applique, and glass.



**76. Covered Round Silver Plated Muffineer  
Dish**

Fine quality "Old English Reproduction" E.P. on copper, Lead mounts, Lipman Bros. silver plate domed covered muffineer bowl. Used for bread and dinner rolls. Applied grape, leaf with vine detail on edge, commonly referred to as "Old English Reproduction" design. Lid has ornate engraving as does interior of the dish. 10" across 5" high to top of floral finial.

Lipman Bros founded in 1931 in Toronto.



**77. Two Pool Cues with a Carrying Case**

Darker cue is a 19 oz. Cooper brand Graphite Power Model #96118

Lighter cue is a 19 oz. Dufferin brand in wood

Includes one carrying case



**78. Set of 6 Fine Crystal Goblets**

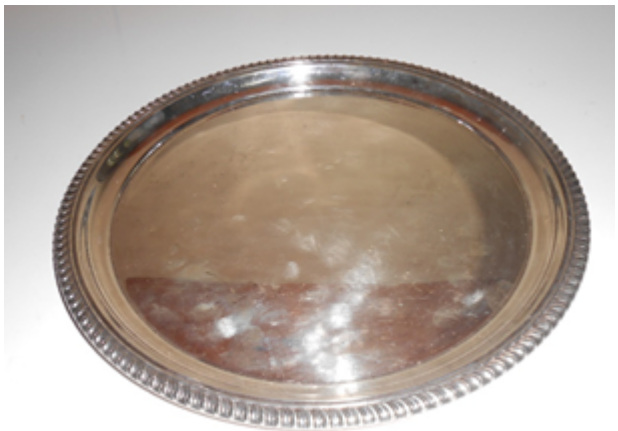
Delicate rope pattern

Thin and light yet durable

Nice stable base

Perfect condition

Approx. 5 ½" tall; 3 ½" in diameter



**79. Birks Regency Round Silver Plate Tray**

12 inches in diameter

Rope design on edge



**80. Birks Silver Plate Vase**

5 inches high

E.P.N.S (electroplated nickel silver)

Cut out design on top.



**81. Set of 8 Nippon Porcelain Dessert Plates**

6" in diameter

Hand painted in Japan

