

# BOTANICAL DRAWINGS

**SUBJECT:** Art

**SUMMARY:** Draw a picture of a living plant.

**MATERIALS NEEDED:** Drawing material (pen, pencil, or marker), paper, a plant to look at, colored pencil or watercolor (optional)

**DIRECTIONS:** Draw a picture of a plant in your house/yard/neighborhood. Pay attention to the number of petals, leaves, etc. Try to be as accurate as you can! See if you can find out it's name by looking it up in a plant book, using the PlantSnap app, asking someone else or looking on the website below. You can add color (trying to be as accurate as possible) or label the different parts (try to get their scientific names!).

## RESOURCES:

Plant identification resources:

- PlantSnap (free app)
- <https://identify.plantnet.org/query/namerica/>

Examples of botanical drawings:

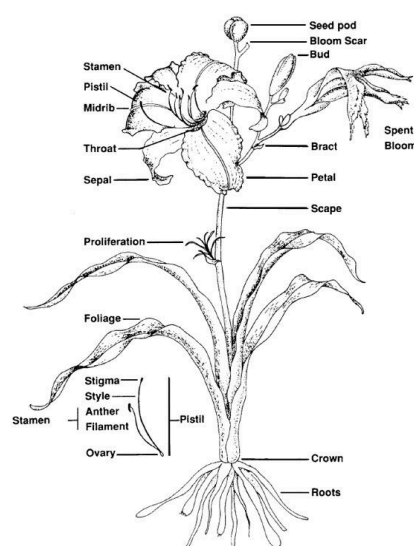
- <https://mymodernmet.com/history-of-botanical-illustration/>

Plant drawing tutorials:

<https://www.youtube.com/watch?v=fiV0rPGzEqM>

<https://www.youtube.com/watch?v=XEOFkmnaS8o>

## EXAMPLE:



**ADDITIONAL SUBMISSION DETAILS:** Take a photograph of your final work. Good job!