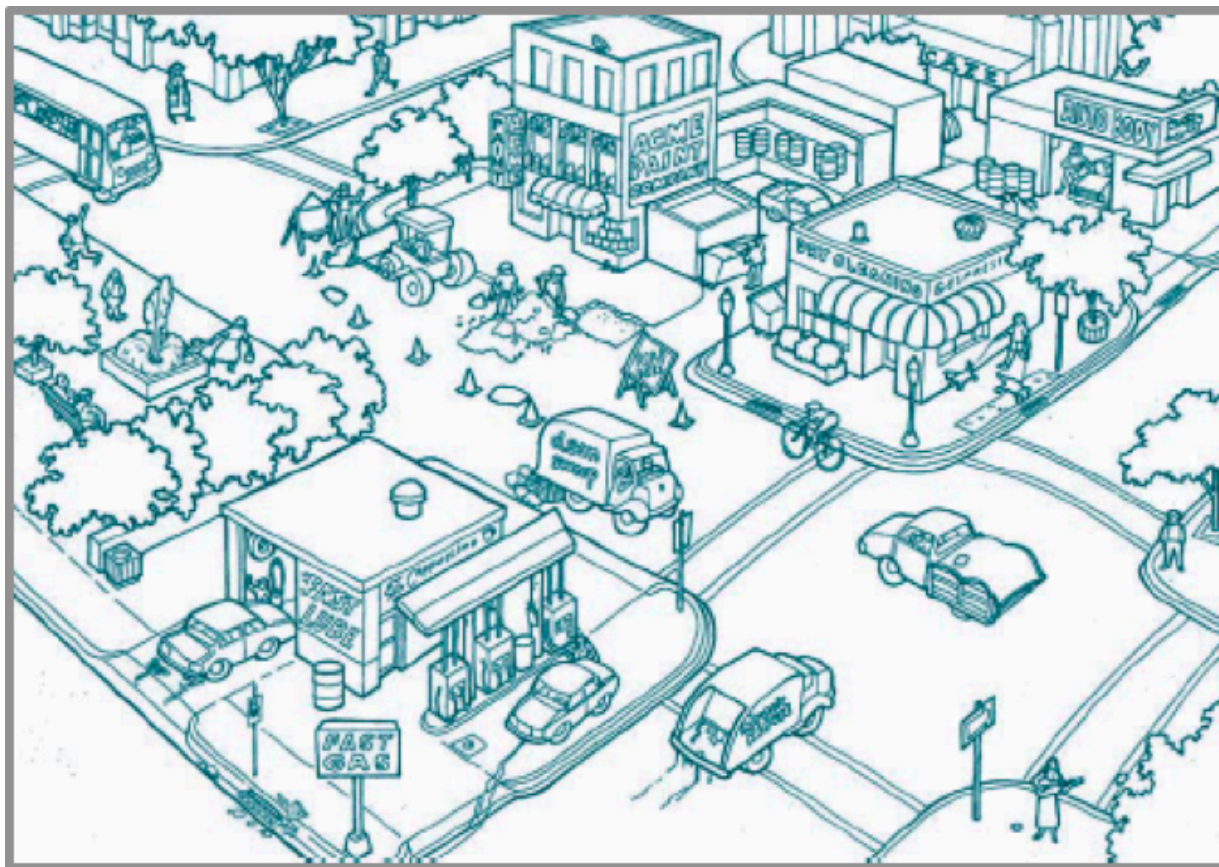


Activity 2: Drawing Out Pollution

On the picture below, circle any items that you think might add extra nutrients or other substances to the environment.



Picture adapted from Desdemona's *Splash!* and *Environmental Pathways - Youth Investigating Pollution Issues in Illinois*

What do the items that you circled have in common?

Did your partners circle similar items?



Activity 2: Drawing Out Pollution

On the picture below, circle any items that you think might add extra nutrients or other substances to the environment.



Picture adapted from *Desdemona's Splash!* and *Environmental Pathways - Youth Investigating Pollution Issues in Illinois*

What do the items that you circled have in common?

Did your partners circle similar items?

Activity 2: Drawing Out Pollution

On the picture below, circle any items that you think might add extra nutrients or other substances to the environment.



Picture adapted from *Desdemona's Splash!* and *Environmental Pathways - Youth Investigating Pollution Issues in Illinois*

What do the items that you circled have in common?

Did your partners circle similar items?