

# LUU Weekly News



[LUU Website](#)

[Learning](#)

[Intranet](#)

[What's On](#)

Welcome to LUU Weekly News.

## Future of Work Updates- Card Collection

There are still a few key cards for the Level 1 doors (near the Faith office and near to the Renn Eddo-Lodge office) that are needed to be collected. Final date to collect your card is **Tuesday 10 October from 2pm - 3pm** in the Culture Office.

On Wednesday 11 October, the settings on these doors will be changed to auto locking, where you will need your key card to access them.

If you have any issues coming to collect your card, please contact Chris Mee ([c.mee@luu.org.uk](mailto:c.mee@luu.org.uk))

Once you have your card we have some wallets you can hang on your lanyard that will house your name badge and your key card. Just call into the Inclusive office to collect one.

## Hello and Farewell



This week, we would like to give a big welcome to **Max Bardell**, who will be joining our Events Team as the Events Marketing Coordinator

We would also like to give a warm welcome to **Catherine Luke, Haley Rich** and **Sanath Sha**, who are joining our Activities Team as Clubs and Societies Assistants

Sadly, we say farewell to **Lia Cheng** our International Students Event Coordinator this week on the 11 October. Lia is starting a new role at Leeds University Business School as a Faculty International Assistant. Thank you for everything you have done here at LUU and we wish you all the best in your new exciting role!

### Pumpkin Painting with People

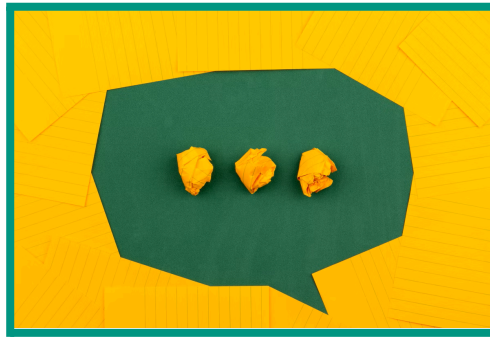


To get into the autumnal spirit, the People Team are hosting a pumpkin painting session. On **Wednesday 18 October** from **11:30am - 12:30pm**, pop along to **Yellow Room** on Level 2 to paint your own pumpkin that you can take home with you.

[Please write your name on the sign-up form](#) so we can ensure that there are enough pumpkins for everyone.

[To find out about LUU staff events, and key international and national events, head over to the Cultural Calendar on the Intranet Page.](#)

### Autumn Pulse Survey



Please complete our latest Pulse Survey. This is important for Managers to understand how their staff team are feeling and set actions to benefit the team in the future.

The survey will close on **Friday 20 October at 5pm.**

[Click here to complete the Survey](#)

### Love to Learn- September Infographic



LUU believes that to be the best organisation we can be, all our people should be able to learn new skills and develop themselves whilst they work for us.

Our people learn in a huge variety of ways, so each month we will be sharing with you some of the learning that has taken place in LUU.

[Click here to see our Love to Learn Infographic for September 2023.](#)

### Student Exec Spotlight- Hannah Catterall

Each week, we will be highlighting objectives/projects that our Student Exec are currently working on. This week, let's see what our Wellbeing Officer, **Hannah Catterall**, is doing this term.



**What is something big you are working on this term:**

This term, I am working on the Welfare Rep Training, a wellbeing and student life podcast, and a comms strategy for wellbeing (which I will be encouraging the university to do the same)

**Is there anything you'd love to hear staff ideas or feedback on:**

Any and all ideas are welcome! I would love to hear ideas for changes to the 'Help & Support' and 'Getting Home' tabs on the [LUU website](#), and ideas for welfare rep training.

**Climate-Friendly Spotlight**

As of Sunday 1 October, there is an England-wide ban on selected Single Use Plastics.

"From 1 October 2023 businesses must no longer supply, sell or offer certain single-use plastic items in England:

- Plates, bowls and trays
- Cutlery and balloon sticks
- Polystyrene food and drink containers"

Great news is that through our #2023PlasticFree pledge to eliminate SUPs across our operations, we have already successfully eliminated all of these banned items! [Click here to see our Plastics Policy](#)

[For more information on the ban, click here.](#)

**LUU Staff Women's Collective Network Survey**



Our Women's Collective Network would love to hear from you! SLT Ally Rori has kindly created a survey for them to get a better understanding of what our staff would like to see from the Network.

[Click fill in the quick survey, click here.](#)

### Hero of the Week



This week's heroes are:

**Emma Holt-Golding, Gemma Rudette, Nicole Cal-Akpuogwu, Anis Zaid, Levi Wright, Tia Chippendale, Chippy, Dennis Duckett, Graham Wootton, Ryan Massey, Nathan Town, Ian Molden, Matty Walsh and everyone who worked on Welcome Week**

Remember all nominations are submitted into our Hero of the Month draw of each month in 2023. There will be 3 vouchers up for grabs, each worth £10.

[You can submit your nominations here.](#)

To find out why you were nominated, [click here.](#)

## Love to Learn – Light Night Leeds



On Thursday 12 October and Friday 13 October, it is the annual Light Night Leeds!

Renowned for being UK's largest annual arts and light festival, some of Leeds most recognisable spaces will be transformed by breathtaking artworks and performances. Light Night Leeds invites you to explore the city and see it in a (quite literally) new light.

[Click here to find out more.](#)

### Reminders

- *We are looking for a group of staff who would like to help plan and organise our staff winter celebration/s. If you would like to get involved, then check in with your manager and then email [unihr@leeds.ac.uk](mailto:unihr@leeds.ac.uk) to let us know you are interested.*

### Useful Links

[LUU Cultural Calendar](#) | [Equality and Inclusivity](#) | [Climate and Sustainability at LUU](#)