

# Farm Fresh Atlas of Southern WI's “Safer at Home” Food & Farm Guide



Jon Rosnow of Heritage Tavern and Lauren Rudersdorf of Raleigh's Hillside discuss seasonal options in 2019

[Restaurant Guide](#)

[Retail Guide](#)

[Farm Guide](#)

[Farm to Families / Fondo de Granjas a Familias](#)

[Seasonality Chart](#)



Chef Tory Miller of L'etoile, Estrellon, and Graze

## Restaurant Guide

### **Adamah Neighborhood Table**

Contact: (608) 441-1574

Location: 611 Langdon St. Madison, WI, 53703

Website: [adamahmadison.com](http://adamahmadison.com)

How to Order: The Adamah Neighborhood Table Cafe is currently closed, however, Adamah is working hard to provide kosher meals to the community with the following options: [Shabbat in a Box](#) - A To-go shabbat meal, free for students and \$15 for non-students. Place Orders by 12pm on Thursday. [Challah Club](#) - Use this link to pre-order loaves of Challah to raise funds for furloughed food service staff. [Seder-in-a-Box](#) - A to-go Seder meal, free to students and \$18 for non-students. Adamah is also working on a passover meal plan with details coming soon!

**Banzo**

Contact: (608) 441-2002

Location: 2105 Sherman Ave. Madison, WI, 53704

Website: [banzomadison.com](http://banzomadison.com)

Hours: Tues - Sun 11am - 7pm

How to Order: Take and Bake meals, Contactless delivery and pickup. Order online or by phone.

**Batch Bakehouse**

Contact: (608) 257-1652

Location: 1402 Williamson Street Madison, WI 53703

Website: [batchbakehouse.com](http://batchbakehouse.com)

Hours: Thursday-Sunday 10am-2pm

How to Order: Order breads and pastries online. Menu and items updated weekly. All orders must be placed online and pre-paid by 5pm Wednesday prior. You can find their bread at the Willy Street Co-op and Metcalfe's as well.

**Beans and Cream Bakehouse**

Contact: 608-318-1247

Location: 1120 West Main Street, Suite 201, Sun Prairie, 53590

Website: [beansncreamcoffeehouse.com](http://beansncreamcoffeehouse.com)

Hours: Monday - Friday 6am-6pm. Saturday and Sunday 7am-12pm

How to Order: Order online through the Homebound Menu, come to the drive through for pick up. Orders placed before 11am will most likely be filled the same day, orders placed after 11am may be filled next day.

**Bloom Bake Shop -**

Contact: (608) 509-7669

Location: 1851 Monroe St. Madison, WI 53711

Website: [bloombakeshop.com](http://bloombakeshop.com)

Hours: Friday 1pm-4pm, Saturday 9am-12pm, Sunday 9am-12pm

How to Order: Order window for Friday pick-up runs from Monday 12pm-Tuesday 12pm. The order window for Saturday runs Tuesday 12pm - Wednesday at 12pm. The order window for Sunday runs Wednesday 12pm- Thursday 12pm. All orders must be placed online.

**Branding Iron Roadhouse Farm-to-Fork Eatery**

Contact: 608-986-2807

Location: 132 S Main Street, Lime Ridge, WI, 53942

Website: <https://www.brandingironrh.com>

Hours: Wed thru Sat, 4pm to 8pm. Call to order.

How to Order: Orders and Payment accepted over phone or at counter. Thank you for your support.

**Brasserie V -**

Contact: (608) 255-8500

Location: 1923 Monroe St. Madison, WI, 53711

Website: <https://www.brasseriev.com>

Hours: Pick-up time slots listed on ordering website

How to Order: Check their [facebook](#) for updates.

**Brix Cider**

Contact: 608-630-3325

Location: 119 South 2nd Street, Mount Horeb, WI, 53572

Website: <https://brixcider.com/community-food-delivery-catalogue>

Hours: Taproom closed. Pick-up Thursdays.

How to Order: You can simply order online before Tuesday at 12:00pm. If you choose delivery, the food will be delivered to you on Thursday. Brix requests that orders be \$30 or more. If you choose pickup, you can call 608-437-brix when you arrive, and we will bring the food out to your car. Delivery zone is 10 miles of Mount Horeb, WI

**Cadre**

Contact: (608) 819-8555

Location: 2540 University Ave, Madison, WI 53705

Website: <https://cadrerestaurant.com/#contact>

Hours: Closed

How to Order: Gift card purchase - call (608) 819-8555

**Charlie's on Main**

Contact: (608)291-2255

Location: 113 Main Street, Oregon, WI, 53575

Website: [charliesmainevent.com](http://charliesmainevent.com) Online ordering: [us.orderspoon.com/charliesonmain](https://us.orderspoon.com/charliesonmain)

Hours: Online ordering for carryout Tuesday through Saturday, and delivery Tuesday through Thursday.

How to Order: Your order will be ready for pickup or delivery approximately 30 minutes after the time you select. We know that's confusing, and we're working with our software company to fix it. Be sure to leave your name and phone number in "Restaurant Instructions" when you check out. Also please add all the requested information in the Curbside Pickup section. If you are visiting this page to donate soup and aren't also ordering food you want to pick up, please just use ASAP for the pick-up time.

**Cheese City Beer**

Contact:608-558-8393

Location: N1671 Honey Creek Road Monroe, WI

Website: <https://cheesecitybeer.com/>

Hours: N/A

How to Order: Check their website for updates.

### **CIRC**

Contact: (608) 294-3030

Location: 1 W. Dayton St. Madison, WI, 53703

Website: <https://www.concoursehotel.com/dining/circ>

Hours: Call for hours and delivery options

How to Order: Food and beverages will be available to order from a limited menu via room service or carry out. For guests staying in the hotel, orders can be delivered to guest rooms, the lobby, the pool, or the Governor's Club lounge. Menus are available at the front desk. Call 608-294-3031 to order or with any questions.

### **Estrellón**

Contact: 608-251-2111

Location: 313 W Johnson Street, Madison, WI, 53703

Website: [estrellonrestaurant.com](http://estrellonrestaurant.com)

Hours: Tuesday - Saturday 4pm-7pm

How to Order: Delivery or Pick-up. Call 608.251.2111 to place your carryout order starting at 2 pm

### **Forage Kitchen**

Contact: (608) 286-1455

Locations & Hours:

Hilldale: 11am - 7:30pm | 715 Hilldale Way, Madison, WI, 53705

Monona: 11am-1:30pm | 800 W. Broadway Unit 700, Monona, WI, 53713

State Street: 11am-2:30pm | 665 State St., Madison, WI, 53703

Website: [foragemadison.com](http://foragemadison.com)

How to Order: Order Online via Eat Street

### **Grampa's Pizza**

Contact: (608) 283-9580

Location: 1374 Williamson St. Madison, WI

Website: [grampaspizzeria.com](http://grampaspizzeria.com)

How to Order: Currently Closed

### **Graze**

Contact: (608) 251-2700

Location: 1 S. Pinckney St Madison, WI 53703

Website: [grazemadison.com](http://grazemadison.com)

Hours: Monday - Saturday 11am-7pm

How to Order: Can Deliver or arrange Pick-ups. Order online via [Eatstreet](#). You can also support Graze by buying a gift card online.

**Great Dane Brew Pub - Downtown**

Contact:(608) 284-0000

Location: 123 Doty St. Madison WI 53703

Website: [greatdanepub.com](http://greatdanepub.com)

Hours: Daily 11am-7:30pm

How to Order: Phone or Online via [Eatstreet](#). You can also support The Great Dane by buying a gift card online.

**Great Dane Brew Pub - Eastside**

Contact: (608) 442-1333

Location:876 Jupiter Dr. Madison, WI 53718

Website: [greatdanepub.com](http://greatdanepub.com)

Hours: 11am-7:30pm

How to Order: Phone or Online via [Eatstreet](#). You can also support The Great Dane by buying a gift card online.

**Great Dane Brew Pub - Fitchburg**

Contact: (608) 442-9000

Location: 2980 Cahill Main St. Fitchburg, WI 53711

Website:[greatdanepub.com](http://greatdanepub.com)

Hours: 11am-7:30pm

How to Order: Phone or Online via [Eatstreet](#). You can also support The Great Dane by buying a gift card online.

**Great Dane Brew Pub - Hilldale**

Contact: (608) 661-9400

Location: 357 Price Pl. Madison, WI 53705

Website:[greatdanepub.com](http://greatdanepub.com)

Hours: 11am-7:30pm

How to Order:Phone or Online via [Eatstreet](#). You can also support The Great Dane by buying a gift card online.

**Grumpy Troll Brew Pub**

Contact: 608-437-2739

Location: 105 S. 2nd St. Mt. Horeb, WI 53572

Website: [thegrumpytroll.com](http://thegrumpytroll.com)

How to Order: Currently Closed

**Harvest**

Contact: (608)239-9040

Location: 21 N. Pinckney St. Madison, WI 53703

Website: [harvest-restaurant.com](http://harvest-restaurant.com)

Hours: Monday - Saturday 4pm-8pm

How to Order: Order online [www.harvest-go.com](http://www.harvest-go.com). Delivery within 5 miles of the restaurant. You can also support Harvest by buying a gift card online.

**Herbiery**

Contact: (630) 881-0005

Website: [herbiery.com](http://herbiery.com)

How to Order: Find their Beer in retail locations in Dane County.

**Heritage Tavern**

Contact:(608) 283-9500

Location:131 E. Mifflin St. Madison, WI 53703

Website: [heritagetavern.com](http://heritagetavern.com)

Hours: 5pm-8pm

How to Order: Accepting orders for Delivery or Pick-up 9 am through 7 pm. Call for details.

**Hop Haus**

Contact: (608)-497-3165

Location: 231 S. Main Street Verona, WI 53593

Website:[hophausbrewing.com](http://hophausbrewing.com)

Hours: We will be open 1-3pm daily for to-go beer

How to Order: Reserve beer online. Pick-up and pay onsite.

**Ian's Pizza - Frances St.**

Contact:(608) 257-9248

Location: 319 N. Frances St. Madison WI 53703

Website: [ianspizza.com](http://ianspizza.com)

Hours: 11am-10pm

How to Order: Call or order Online for pick-up. Whole pies only.

**Ian's Pizza - State St.**

Contact: (608) 257-9248

Location: 100 State St. Madison, WI 53703

Website:[ianspizza.com](http://ianspizza.com)

Hours:11am-late night

How to Order: Call or order Online for pick-up. Whole pies and salads only.

**Ian's Pizza- Garver Feed Mill**

Contact: (608) 257-9248

Location: 3241 Garver Green Madison, WI 53704

Website: [ianspizza.com](http://ianspizza.com)

Hours: 11am-9pm (Open until 10pm Friday and Saturday)

How to Order: Call or order Online for pick-up. Whole pies, salads and slices available.

**L'Etoile**

Contact: (608)-251-0500

Location: 1 S. Pinckney St. Madison, WI 53703

Website: [letoile-restaurant.com](http://letoile-restaurant.com)

Hours: Wednesday-Saturday 5pm-7pm

How to Order: Order a Family Meal online. You can also support L'etoile by buying a gift card online.

**Liliana's**

Contact: 608-442-4444

Location: 2951 Triverton Pike Drive Fitchburg, WI 53711

Website: [lilianasrestaurant.com](http://lilianasrestaurant.com)

Hours: Monday - Saturday

How to Order: Call or order online for pick-up. Your order will be ready for pickup or curbside delivery approximately 30 minutes after the pickup time you select. We know that's confusing, and we're working with our software company to fix it. Be sure to leave your name and phone number in "Restaurant Instructions" when you check out. Also please add all the requested information in the Curbside Pickup section. If you are visiting this page to donate soup and aren't also ordering food you want to pick up, please just use ASAP for the pick-up time. Click the Give-a-soup donation to pay it forward.

**Lombardino's**

Contact: (608) 238-1922

Location: 2500 University Ave. Madison, WI 53705

Website: (608) 238-1922

How to Order: Currently Closed. We will be selling a special edition gift certificate that is redeemable at Lombardino's, Topsy Cow Downtown or Topsy Cow Sun Prairie. For each Eat Well Do Good gift certificate sold, we will donate 50% of the proceeds to the Dane County COVID-19 Emergency and Recovery Fund.

**Longtable Beer Café**

Contact: (608)-841-2337

Location: 7545 Hubbard Ave, Middleton, WI 53562



Website: [longtablebeercafe.com](http://longtablebeercafe.com)

Hours: Check online menu for pick-up time slots

How to Order: Order online at [longtable.hrpos.heartland.us](http://longtable.hrpos.heartland.us)

### **Lucille & Merchant**

Contact: (608) 283-0000

Location: 101 King St

Website: [lucillemadison.com](http://lucillemadison.com)

Hours: Lunch: Midday - 4pm, Dinner: 4-8pm

How to Order: Lucille and Merchant are joining forces to bring you incredible meals. Stop-by Lucille's order window, or order online. One new element to the menu available to the public will be a daily meal jointly created by the chefs called our Bodega Box, which includes rice, beans, fried plantains and a daily protein entree will be offered for \$10 per person, but \$5 per person for the service industry and all students.

### **ORIGIN Breads**

Contact: (608) 381-2125

Location: 931 E. Main St., #1 Madison, WI 53704

Website: [originbreads.com](http://originbreads.com)

Hours: Tuesday-Friday 10am-4pm

How to Order: Pre-order and pay online at [originbreads.square.site](http://originbreads.square.site) or by phone. All orders must be placed at least one day before your desired pick up date. Orders placed after 3:00 pm may not be available for next day pick up.

### **Osteria Papavero**

Contact: (608) 255-8376

Location: 128 E. Wilson St. Madison, WI 53703

Website: [osteriapapavero.com](http://osteriapapavero.com)

Hours: 3-7 pm Monday-Saturday

How to Order: Please call 608-255-8376 to place your order. We will take only credit card over the phone to minimize interaction at pick-up. We will update as soon as possible if anything changes.

### **Pasture & Plenty**

Contact: (608)-665-3370

Location: 2433 University Ave. Madison, WI 53726

Website: [pastureandplenty.com](http://pastureandplenty.com)

Hours:

Monday: 3:30 PM - 7:30 PM

Tuesday: 6:45 AM - 7:30 PM

Wednesday: 6:45 AM - 7:30 PM

Thursday: 6:45 AM - 7:30 PM

Friday: 6:45 AM - 8:00 PM

Saturday: 9:00 AM - 1:00 PM

How to Order: Stop by, order online, meal kit subscription. We are prepared to accept to-go orders and will provide "no-touch" home delivery for dinners and farm-to-freezer meals, to start, and will expand delivery as we are able. You can order farm-to-freezer meals by email or phone. Online ordering is available for weeknight dinners, and we will expand to more home delivery as we go.

### **Porter Coffee & Bandit Tacos**

Contact: 608-720-1110

Location: 640 W Washington Ave, Suite 101 Madison, WI 53703

Website: [toasttab.com/porter-madison](http://toasttab.com/porter-madison)

Hours: 7am-5pm

How to Order: Order online or by phone for curbside pick-up.

### **Salvatore's Tomato Pies - Madison**

Contact: (608) 238-6040

Location: 912 E. Johnson St. Madison, WI 53703

Website: [salvatorestomatopies.com](http://salvatorestomatopies.com)

Hours: Call to confirm store hours

How to Order: Order online or call for Delivery or Pick-up.

### **Salvatore's Tomato Pies - Sun Prairie**

Contact: (608) 318-1761

Location: 121 E. Main St. Sun Prairie, WI 53590

Website: [salvatorestomatopies.com](http://salvatorestomatopies.com)

Hours: Call to confirm store hours

How to Order: Order online or call for Delivery or Pick-up.

### **Short Stack Eatery**

Contact: (608) 709-5569

Location: 301 W. Johnson St. Madison, WI 53703

Website: [shortstackeats.com](http://shortstackeats.com)

Hours: Monday to Wednesday: 7am-3pm Thursday to Sunday: 7am-9pm

How to Order: Order online or call for Pick-up

### **Tempest Oyster Bar**

Contact: (608) 258-1443

Location: 120 East Wilson St. Madison, WI 53703

Website: [tempestoysterbar.com](http://tempestoysterbar.com)

Hours: 5pm-9pm

How to Order: Place order online, will call or text to confirm pick-up time.

### **The Cider Farm Cidery and Tasting Room**

Contact: (608)-217-6217

Location: 8216 Watts Rd Madison, WI 53719

Website: [theciderfarm.com](http://theciderfarm.com)

Hours: 4-9pm Friday and Saturday. 10am-6pm Sunday.

How to Order: Order online for Pick-up

### **The Coopers Tavern**

Contact: (608) 256-1600

Location: 20 W. Mifflin St. Madison, WI 53703

Website: [thecooperstavern.com](http://thecooperstavern.com)

Hours: Monday-Saturday from 11am-8pm

How to Order: Please place your delivery or curbside carryout order via [Eatstreet](https://eatstreet.com). Or call and place/pay for your carryout order: 608-256-1600

### **The Madison Club**

Contact: (608) 255-4861

Location: 5 E. Wilson St. Madison, WI 53703

Website: [madisonclub.org](http://madisonclub.org)

Hours: Tuesday - Saturday 4pm-7pm.

How to Order: To place your orders, please email [reception@madisonclub.org](mailto:reception@madisonclub.org) or call the front desk at 608.255.4861 between 4:00 PM and 7:00 PM the day prior to pick up or delivery.

### **The Quince & Apple Company**

Contact [info@qa.email](mailto:info@qa.email) | 608-301-5433

Location 931 E Main St #24, Madison, WI 53703

Website <https://www.quinceandapple.com/>

Details on how to order food [Forward Provisions](#) is a collaborative effort among some of Wisconsin's best small, artisan food producers to support independent crafters in these difficult times. In the Madison area, we offer no contact free delivery every Friday and can ship boxes anywhere in the country.

Buy one box or sign up for weekly deliveries to become a regular sustaining supporter

**Tornado Steakhouse**

Contact: (608)-256-3570

Location: 116 S. Hamilton St. Madison, WI 53703

Website: [tornadosteakhouse.com](http://tornadosteakhouse.com)

Hours: Closed

**Tortillas Los Angeles**

Contact: (608) 345- 3089

Location: 1219 North Sherman Avenue Madison, WI 53704

**Wisconsin Brewing Co.**

Contact: (608) 347-0516

Location: 1079 American Way Verona, WI 53593

Website: [wisconsinbrewingcompany.com](http://wisconsinbrewingcompany.com)

Hours: Closed

How to Order: Find their beers at grocery and liquor stores in Dane County

**Working Draft Beer Co.**

Contact: (608)-709-5600

Location: 1129 E. Wilson Street Madison, WI 53703

Website: [workingdraftbeer.com](http://workingdraftbeer.com)

Hours: Closed

## Retail Guide

**Metcalfe's Market - Hilldale**

Contact: (608) 238-7612

Location: 726 N Midvale Blvd. Madison, WI 53705

Website: [shopmetcalfes.com](http://shopmetcalfes.com)

Hours: 6am-8pm. We kindly request that shoppers reserve our first hour of service (6am-8am) for those who are at a higher risk of severe illness by COVID-19, first responders and medical professionals.

Details: Get your groceries in-store, through pick-up or by delivery

**Metcalfe's Market - West Towne**

Contact: (608) 238-7612

Location: 7455 Mineral Point Rd. Madison, WI 53719

Website: [shopmetcalfes.com](http://shopmetcalfes.com)

Hours: 6am-8pm. We kindly request that shoppers reserve our first hour of service (6am-8am) for those who are at a higher risk of severe illness by COVID-19, first responders and medical professionals. Get your groceries in-store, through pick-up or by delivery

Details: Get your groceries in-store, through pick-up or by delivery

### **Willy Street Co-op**

Contact: (608)-251-6776

Location: 1221 Williamson St, Madison, WI 53703

Website: [willystreet.coop](http://willystreet.coop)

Hours: 10am - 8pm. 10am-11am reserved for seniors and/or immunocompromised.

Details: "To help maintain effective social distancing, we are limiting the number of customers in our stores to no more than 50 at a time. When we reach that capacity, any customers who come to the door will be asked to wait. During 10am-11am, the store capacity will be reduced to no more than 30 customers. We do have online ordering and pick-up/delivery, but all slots are currently booked up. We are adding more slots as we are able!

### **Willy Street Co-op- West**

Contact: (608) 284-7800

Location: 6825 University Ave, Middleton, WI 53562

Website: [willystreet.coop](http://willystreet.coop)

Hours: 10am - 8pm. 10am-11am reserved for seniors and/or immunocompromised.

Details: "To help maintain effective social distancing, we are limiting the number of customers in our stores to no more than 50 at a time. When we reach that capacity, any customers who come to the door will be asked to wait. During 10am-11am, the store capacity will be reduced to no more than 30 customers. We do have online ordering and pick-up/delivery, but all slots are currently booked up. We are adding more slots as we are able!

### **Willy Street Co-op- North**

Contact: (608)-471-4422

Location: 2817 N Sherman Ave, Madison, WI 53704

Website: [willystreet.coop](http://willystreet.coop)

Hours: 10am - 8pm. 10am-11am reserved for seniors and/or immunocompromised.

Details: "To help maintain effective social distancing, we are limiting the number of customers in our stores to no more than 50 at a time. When we reach that capacity, any customers who come to the door will be asked to wait. During 10am-11am, the store capacity will be reduced to no more than 30 customers. We do have online ordering and pick-up/delivery, but all slots are currently booked up. We are adding more slots as we are able!

**Bushel & Peck's**

Contact: (608)-363-3911

Location: 328 State Street Beloit, WI 53511

Website: [bushelandpecks.com](http://bushelandpecks.com)

Hours: 10am-6pm Monday - Friday

Details: Order online, curbside or in store pick up.

# “Safer at Home” Farm Guide



April Prussia of Dorthy's Range

# Farm Guide

## **Adam's Garlic**

contact@adamsgarlic.com | (608) 794-2107

9757 State Rd. 81 Cassville, WI

adamsgarlic.com

Products available in July.

## **Anisoptera Acres**

farmerdan@anisopteraacres.com | (920) 478-9696

N9387 Riverview Drive Waterloo, WI

anisopteraacres.com

They are selling various cuts of meat as well as 1 lb jars of honey. Meat options change weekly, and anyone interested should email [farmerdan@anisopteraacres.com](mailto:farmerdan@anisopteraacres.com). Be sure to mention the meat newsletter. Orders can be made through requests to the same email, and products are delivered in the Madison area. The farm is also in the planning stage for summer meat, so anyone interested in bulk orders should contact farmer Dan.

## **Appleberry Farm**

fun@theappleberryfarm.com | (608) 798-2780

8079 Maurer Rd. Cross Plains, WI

theappleberryfarm.com

Currently closed keep in touch on their website.

## **Atoms to Apples**

raburomia@yahoo.com | (608) 333-1866

1993 WI-92 Trunk Mount Horeb, WI

[farmfreshatlas.org/view/atoms-to-apples](http://farmfreshatlas.org/view/atoms-to-apples)

Details coming soon.

## **Beef n Beaks Farm**

beefnbeaks@gmail.com | (920) 478-2045

N8248 Hwy. O Waterloo, WI

beefnbeaks.com



They currently are getting about 50 dozen eggs a week to sell, Most cuts of beef and lots of ground beef are available. More slaughters are scheduled for over the summer to meet farmers market demands, and this schedule will not change. Email for interest in orders which can be picked up at the farm (N8248 Hwy. O Waterloo, WI) during most hours. Larger orders can be driven to several locations, which can be discussed over email.

### **Blue Skies Farm**

paul@blueskiesfarm.com | (608) 455-2803

10320 N. Crocker Rd. Brooklyn, WI

facebook.com/blueskiesfarm

For us, and probably you as a reader, we all understand the summer season is too far in the future to predict how we can sell. I'm hoping to have u-pick berries available in late summer. In May if we have a venue we will have asparagus, lettuce, and cooking greens and if possible could do deliveries or have pick-ups at the farm. For Updates follow Blue Skies Farm on Facebook.

### **Brightonwoods Orchard**

whstone41@me.com | (262) 878-3000

1072 288th Ave Burlington, WI

[brightonwoodsorchard.com](http://brightonwoodsorchard.com)

Fresh fruit: their summer markets have been cancelled and they have donated the majority of the fruit

Cider: Reach out on [facebook](https://www.facebook.com) when possible or over the phone for cider orders.

### **Burr Oak Gardens LLC**

(608) 234 0674

W5511 County Road B, Rio, WI 53960

[burroakgardens.com/about](http://burroakgardens.com/about)

Burr Oak Gardens has certified Organic Vegetable and Herb Plants for sale. Order online and pick-up by appointment starting May 1st.

### **Cates Family Farm**

Contact: eric.r.cates@gmail.com | (608) 512-7327

Location: 5992 Cty. T Spring Green, WI 53588

Website: [catesfamilyfarm.com](http://catesfamilyfarm.com)

Cates has bulk options available (50lb, 100lb, etc.) as well as large amounts of ground beef. Cates butchers regularly, feel free to call or email them to find out what is currently available. You can also find their products at the Willy Street Co-op East and West.

### **Cedar Grove Cheese Inc.**

(608) 546-5284

E5904 Mill Rd, Plain, WI 53577

<https://cedargrovecheese.com/>

They have lots of cheese available. Anyone interested can call (608) 546-5284 for deliveries or order through the website. They are distributing to many grocery stores in the Madison area including Metcalfe's, Whole Foods, and Jennifer Street Market. Cheese is available at a large discount at Clock Shadow Creamery retail store in Milwaukee.

### **Cherryland's Best**

(920) 687-1440 | [scott@cherrylandsbest.com](mailto:scott@cherrylandsbest.com)

801 Fullview Dr. Appleton, WI 54913

[cherrylandsbest.com](http://cherrylandsbest.com)

Their retail store is still open and selling cherry juice, dried cherries, and trail mix. Orders for delivery can also be made through their website. You can also find their products at Woodman's, Festival, and some Piggly Wiggly's.

### **Copper Kettle Farm - Gourmet Garlic**

[\(262\) 538-1189](tel:2625381189)

5576 County Rd Q, Colgate, WI 53017

[copperkfarm.com](http://copperkfarm.com)

They are not selling anything to customers, grocers, or restaurants at this time. Keep an eye on the website for garlic sales starting late August.

### **Door Creek Orchard**

(608) 838-4762

3252 Vilas Rd, Cottage Grove, WI 53527

[doorcreekorchard.com](http://doorcreekorchard.com)

Expecting fruit to be available in Mid-July. You can access their food through delivery, pick-up on farm, or pick-up from a drop offsite. Contact them for availability.

### **Dorothy's Range LLC**

608-444-1102

W8707 Sawmill Rd Blanchardville, WI 53516

[dorothysgrange.com](http://dorothysgrange.com)

Customers can buy online directly by emailing [dorothys.grange@gmail.com](mailto:dorothys.grange@gmail.com). Pickup is typically at the farm, but other pickup locations can be coordinated via email. They are also selling to Brix Cider (608-437-2749) who has temporarily converted so selling food to customers. The boxes contain a variety of things like produce, meats, dairy, tortillas, flour, and pasta.

### **Dreamy 280 Farm Fresh Meats LLC**

(608) 437-8074 | [Dreamy280@mhct.net](mailto:Dreamy280@mhct.net)

2792 Cave of the Mounds Rd, Blue Mounds, WI 53517

[dreamy280.com](http://dreamy280.com)

Dreamy 280 is offering all beef retail cuts. You can find their availability on their website. Orders can be made online, through email, or by phone. On-farm pick-up is available Wednesdays 2-6pm or Saturday 8am-12pm.

### **Driftless Organics**

(608) 624-3735

52450 McManus Rd, Soldiers Grove, WI 54655

[driftlessorganics.com](http://driftlessorganics.com)

Currently selling potatoes, parsnips, and black spanish radish with more produce coming in May. They are also working with DCFM so customers looking to buy directly should look into their local food pickup program

### **Echo Valley Farm**

(608) 337-4578

E 14604, County Hwy F, Ontario, WI 54651

[Echovalleyfarmwisconsin.com](http://Echovalleyfarmwisconsin.com)

Echo Valley Currently has Herbal Teas (tulsi and nettle) and freshly baked bread. They will have more tea and baked good options later in May as well as produce. You can purchase food from their farm on Saturday and Sundays from 9-4. Give them a call ahead of time to see what is in stock. They are willing to arrange a drop off point by appointment as well.

### **Elderberry Hill Farm**

(608) 772-4461

8399 Roelke Rd, Blue Mounds, WI 53517

[facebook.com/pages/category/Farm/Elderberry-Hill-Farm-330155273685465/](https://facebook.com/pages/category/Farm/Elderberry-Hill-Farm-330155273685465/)

Greens will be available in early May, and more details will arrive closer to that time. Anyone interested can email [elderberryhillfarm@gmail.com](mailto:elderberryhillfarm@gmail.com). Smaller shares can be picked up at the farm and larger shares can be delivered.

### **Englewood Grass-fed Beef**

(920) 484-8457

W1414 Co Rd Z, Fall River, WI 53932

[englewoodgrassfarm.com](http://englewoodgrassfarm.com)

They are currently still selling several cuts of beef including steaks and ground beef. Anyone interested can order through the website, where more availability details can be found. There are delivery options available as well as scheduled pickup dates on the farm.

**Flyte Family Farms LLC**

[flyte@uniontel.net](mailto:flyte@uniontel.net) | (715) 228-2304

[flytefamilyfarm.com](http://flytefamilyfarm.com)

They currently have cabbage for sale to customers, potatoes, tomatoes, and cucumbers will be available soon. They are still transitioning to a new ordering system but interested customers can email [flyte@uniontel.net](mailto:flyte@uniontel.net).

**Four Elements Herbals**

(608) 522-4492

111 E Walnut St, North Freedom, WI 53951

[fourelementsherbals.com](http://fourelementsherbals.com)

They are still selling a wide range of products including tinctures, teas, homemade soaps, and salves. Anyone interested in curbside pickup at the store can call, and services are available weekdays 9-4. Their products can be found in Madison at Whole Foods, Willy St. Co-op, Community Pharmacy, and Metcalfes. Products can also be found at many local health food stores around the country.

**Gentle Breeze Honey**

[gentlebreezehoney@gmail.com](mailto:gentlebreezehoney@gmail.com) | (608) 832-4876

2123 Town Hall Rd. Mt. Horeb, WI

[Gentlebreezehoney.com](http://Gentlebreezehoney.com)

Gentle Breeze has their full array of products available ranging from 8oz to 60# of honey by pick up or in retail outlets. You can pick up products at the address provided above from 8:00am - 3:00pm Monday-Friday, Please call ahead. Gentle Breeze Products are also available at most Madison grocery stores, including Willy Street Co-ops, Woodman's, Hy-Vee, Metcalfe's, Festival, Whole Foods; in smaller communities in Dane County it's at select Piggly Wiggly's, Miller's and Bill's.

**Happy Valley Farm**

[luceykevinez1@yahoo.com](mailto:luceykevinez1@yahoo.com) | 608-220-5007

10267 Fesenfeld Road Black Earth, WI

[farmfreshatlas.org/view/happy-valley-farm](http://farmfreshatlas.org/view/happy-valley-farm)

Happy Valley Farm offers a wide range of produce throughout the season. Currently they have frozen, diced, organic sweet red bell peppers available by delivery. Call or email them with inquiries. Farm sales later in the season are to be determined. You can find their produce at Miller and Son's Grocery Store or Metcalfe's.

## **Hidden Valley Mushroom Farm**

(608) 253-6804

S270 Birchwood Rd (40.64 mi)

Wisconsin Dells, Wisconsin 53965-8297

Hidden Valley Mushroom Farm is supplying to Metcalfe's Market at Hilldale and Oriental Shop in Madison. Their products are also available at Reedsburg Area Medical Center, R.E. Golden Produce, Cheeze Factory Restaurant, Green Owl Cafe, and Summit Ridge restaurant. Local customers in the Dells can call to pick up directly, and they should make sure they are healthy & safe before coming to the farm.

## **Hilltop Community Farm**

608-257-6729

S850 Heidrich Rd, La Valle, WI

[hilltopcommunityfarm.com/](http://hilltopcommunityfarm.com/)

At this point our intention is to continue with our growing season as scheduled, and with it our commitment to growing resilience, beauty and abundance for you. As a small CSA and orchard ecosystem we are not concerned about more than 10 people gathering at our drop-site(s) and can deliver to you as per usual once the season starts. Please let us know if your process for receiving deliveries has changed.

Our fruit season typically begins in late June with juneberries (aka serviceberries), with currants ripening in July followed by clove currants and elderberries in August and peaks in September with hardy kiwi, pears and apples, with lots of flower infusions and herbs to enjoy in between. We hope the season is more forgiving for our hardy kiwi, plums, and pears. Currants, elderberries, apples and of course aronia seem to thrive with whatever Mother Nature throws their way. As always we negotiate with our bird neighbors to 'share' in the juneberry and cherry harvest and hope to offer these on the menu as well.

We will do our best to communicate availability to you a week or two ahead of harvest, when we have a reliable sense of fruit set and what Mother Nature has in store. From there you can let us know what you would like to order and we will invoice payment via on-line, we also accept checks.

**Options:** If you want to shift fruit plans from restaurant flow to a more home based menu and/or for any juicing jamming, freezing plans, however this might play out for you this season, we [have a handful of fruit market share available](#) and can sign you up.

Fruit Market Shares: We do have 2 different Fruit Market Share options. Share members can plan for 2 deliveries (sometimes 3 if the plum crop is decent), one in mid July and the other in September.

**Option 1** - Enjoy a sampling of red, white, and black currants, aronia berry, hardy kiwi, 5# pears and fruit jam. Price \$60

**Option 2** - All the fruit loot from Option 1 plus fruit salsa, aronia or elderberry juice, raspberry and apples. Price \$85

If you are not interested in a fruit market share, but would like to order a pint or several pounds of specific fruit, [please contact us and we will add you to our fruit list.](#) and we can plan on delivery.

### **Link's Greenhouse**

(608) 742-6758

N9905 Link Rd, Portage, WI 53901

[business.portagewi.com/list/member/link-s-greenhouse-178](http://business.portagewi.com/list/member/link-s-greenhouse-178)

Link's has seed kits for sweet potatoes and onions. The best way to order for curbside pickup is over the phone, and they are working on an online ordering system. Melons will be available in the summer, with more details closer to that time.

### **Lovefood Farm**

farmer@lovefood.farm | (608) 217-5387

1679 Pleasant Hill Road Stoughton, WI

lovefoodfarm.com

Lovefood will begin their availability at the end of April. Lovefood offers On-Farm Sales (Wednesdays 12-3pm), Drop-off Sites (4-7pm on Tuesdays at McPike Park on Madison's Eastside and 9am-12pm on Saturdays at Hilldale Shopping Center), Delivery (visit the website above) and Retail Sales (Willy Street Co-op, Metcalfe's Market, Jenifer St. Market)

### **Mallory Meadows**

mallorymeadowseagle@gmail.com | 608-770-0301

W367S9594 South Rd Eagle, WI 53199

herbamoreherbs.com

Honey- limited amounts in 5pound or 8oz servings

Hot sauces: habenero mango, smoked jalapeño, cayenne are all fully stocked

Hemp products: tincture and balms fully stocked

Pick-up items on the farm. Call ahead for available items.

**Marshview Farm**

[bruce@marshviewfarm.com](mailto:bruce@marshviewfarm.com) | 608-412-4845  
52404 State Hwy 60 Trunk Wauzeka, WI 53826  
[farmfreshatlas.org/view/marshview-farm](http://farmfreshatlas.org/view/marshview-farm)

Will have over 1000lbs of asparagus a week, depending on weather at the end of April. Call or email to make an order. Likely will be at DCFM doing pick-ups. Delivery will be available for large quantities. Contact for more details.

**Mastodon Valley Farm**

[peter@mastodonvalleyfarm.com](mailto:peter@mastodonvalleyfarm.com) | (608) 843-6467  
14153 Kanable Hollow Road Viola, WI 54664  
[mastodonvalleyfarm.com](http://mastodonvalleyfarm.com)

Mastodon Valley has beef, pork, and lamb options available for drop-off site delivery in Madison. Purchase online to schedule delivery.

**Poor Richard's Farm**

[poorrichardfarm@gmail.com](mailto:poorrichardfarm@gmail.com) | (608) 295-2574  
3644 S. Tracey Rd. Janesville, WI 53545  
[Poorrichardsfarm.com](http://Poorrichardsfarm.com)

Grass-Fed beef Sticks in four flavors: Tex-Mex - a spicy mesquite, Original - a zesty hickory, Barbeque - a sweet & mild hickory and maple smoked Teriyaki. These four flavors are exclusively formulated for our farm by our processor.

100% grass-fed and finished beef from our farm is combined with all natural ingredients, we use no fillers, and natural collagen casings.

Each stick is 1.5 oz (42g) they come in individually vacuum sealed packages. They are shelf stable requiring no refrigeration and they have a shelf life of 12 months

We will have grass fed ground beef, steaks and roast in July.

Contact or order online to make an order and schedule pick-up either on-farm or at the beloit farmers market. You can also buy these products at all Willy Street Co-op locations or Food is Fuel in Orfordville.

**Rainbow Fleece Farm**

[rainbowfleece@gmail.com](mailto:rainbowfleece@gmail.com) | 608-527-5311  
W7181 Hustad Valley Rd. New Glarus, WI  
[Rainbowfleecefarm.com](http://Rainbowfleecefarm.com)

Rainbow Fleece Farm has lamb, eggs, and fiber, yarn, and wool products for sale. Lamb selections include: lamb chops, shanks, stir fry, stew meat, gyro brats, smoked lamb brats. You

can pick up these items on the farm by making an appointment, pick up at drop-off locations in Fitchburg and the WilMar parking lot in Madison by appointment, or by delivery. To find offerings, use the website above and to make an order use the email or phone contact listed above.

### **Raleigh's Hillside Farm LLC**

Contact: [raleighshillsidefarm@gmail.com](mailto:raleighshillsidefarm@gmail.com) | 608-604-6562

Location: 901 N. Marsh Rd. Brodhead, WI 53520

Website: [RALEIGHSHILLSIDEFARM.COM](http://RALEIGHSHILLSIDEFARM.COM)

Raleigh's Hillside Farm is currently selling shares for their 2020 CSA season. First deliveries begin in mid-June, with the possibility of earlier shares if there is a demand for it. Visit their website for more information.

### **Riemer Family Farm**

[riemerfamilyfarm1927@gmail.com](mailto:riemerfamilyfarm1927@gmail.com) | (608) 897-6295

W2252 Riemer Rd Brodhead, WI 53520

[Riemerfamilyfarm.com](http://Riemerfamilyfarm.com)

We have a full selection of 100% grass fed beef and lamb, pastured pork, eggs and chicken. You can purchase in any quantity, and can take advantage of our value bundles. We are primarily interested in selling quantities of the following:

5lb ground pork packages: 100 packages at \$5.60/lb or \$28/package

1/3 lb ground beef (grass fed) patties in 5lb boxes: boxes are \$7.50/lb or \$37.50/box

These are bulk items that we take to LaBrioch and Off Broadway Draffhouse which are currently closed.

Pre-order by Tuesday at midnight for 1 day FedEx shipping directly to your home, or to pick up on the farm on Thursdays 4-6pm.

### **Seven Seeds Farm**

[michael@sevenseedsorganicfarm.com](mailto:michael@sevenseedsorganicfarm.com) | (608) 444-9759

5079 County Road Z Spring Green, WI 53588

[sevenseedsorganicfarm.com](http://sevenseedsorganicfarm.com)

Grass-fed Organic Beef and Pastured Pork- quarter, half and whole animals or buy the cut. Lots of 5 lb ground beef! Pick-up on farm on Wednesday 3-6pm or Saturday 11am-3pm. Delivery options are also available. Visit their website for food and delivery options. You can also buy their summer sausage at the Willy Street Co-op.



### **Sprouting Acres**

(608) 469-2319

1746 WI-73, Cambridge, WI 53523

[www.sproutingacres.com](http://www.sproutingacres.com)

Due to regulations in place for large gatherings, 2020 pizza nights are going to be available for carry out only starting in May. All veggies, pizzas, salads, and desserts will be available to order online in the next few days at our [online store](#). Carryout orders only for the time being. As of now, we are open the 1st and 3rd Sundays of each month from May-October. Bring a picnic blanket or some chairs. We have some seating inside and out, but it is limited. We will have house made lemonades and other beverage options, but we cannot offer alcohol. The Sprouting Acres CSA for 2020 is sold out.

### **Steadfast Acres**

(608) 588-6893

33408 WI-130, Lone Rock, WI 53556

<https://www.steadfast-acres.com/>

Right now, Steadfast Acres is supplying nearly all of their product to the [Spring Green Farmers Market](#) on Monroe St. of Spring Green, WI. They are carrying a variety of vegetables including kale, spinach, squash, cabbage, carrots, onions, radishes, and beets. Their CSA has sold out.

### **Squashington Farm**

[squashingtonfarm@gmail.com](mailto:squashingtonfarm@gmail.com) | (920) 422-1042

Address for Brix Cider Food Pick-up: 119 South 2nd Street, Mount Horeb, WI

[Squashingtonfarm.com](http://Squashingtonfarm.com) | [brixcider.com](http://brixcider.com)

You can get produce from Squashington Farm through Brix Cider's Community Food Delivery service. Brix is delivering food within a ten mile radius of Mount Horeb for food orders above \$30, or making their food available for pick up at their address listed above. Visit Brix's website above for more details.

### **The Berry Farmer**

Contact 608-355-1965

Location E10222 Hoot Owl Valley Rd, Baraboo, WI 53913

Website <http://theberryfarmer.com/>

Strawberries are currently growing and should be available in early June, but this may change due to the pandemic. Delivery or pickup methods will be determined closer to June.

The Berry Farmer is also looking to hire part-time strawberry pickers. The application is on their website.

### **Tipi Produce**

Contact [csa@tipiproduce.com](mailto:csa@tipiproduce.com) | 608-882-6196

Location 14706 W Ahara Rd, Evansville, WI 53536

Website <https://www.tipiproduce.com/>

Tipi Produce will be supplying radishes and spinach to Willy St. Co-op starting in a few weeks. Their CSA is currently at capacity with a waiting list.

### **Two Onion Farm**

Contact [twoonionfarm@gmail.com](mailto:twoonionfarm@gmail.com) | 608-762-5335 (office) | 608-726-2550 (cell)

Location 19638 Cottage Inn Rd, Belmont, WI 53510

Website <http://www.twoonionfarm.com/>

Organic vegetable and herb plants for sale. Order on [twoonionfarm.com/seedlings](http://twoonionfarm.com/seedlings). \$25 minimum for home delivery or pick up at our farm. Apple CSA shares (Delivery season is August 12th to October 29th) are also available on our website.

### **Valley Springs Farm**

[valleyspringsbb@gmail.com](mailto:valleyspringsbb@gmail.com) | (608) 524-2421

E4681 County Rd S Reedsburg, WI 53959

[valleyspringsbeef.com](http://valleyspringsbeef.com)

Frozen Retail Beef Cuts. 20 pounds each of steaks, roasts, summer sausage, brats, and bologna. You can purchase on farm with an appointment or from 9am to noon on Saturdays. Call, email, or buy online to arrange delivery.

### **Wellspring Inc**

Contact [board@wellspringinc.org](mailto:board@wellspringinc.org) | 262-675-6755

Location 4382 Hickory Rd, West Bend, WI 53090

Website <https://www.wellspringinc.org/>

Wellspring Inc has a large variety of veggies and herbs that are available through a new REKO group, an online farmers market following the European REKO model. Orders are placed online and picked up at Lime Kiln Park in Grafton (the location may change in the future). The group includes several farms in the Ozaukee area. Anyone in the Ozaukee area can join the Facebook group at <https://www.facebook.com/groups/1104529609901765/> .

Wellspring is also starting an online seedling sale for herb, veggie, and flower seedlings! Orders can be placed online at <https://www.wellspringinc.org/store/c12/seedlings#/> and seedlings can be picked up at the farm on the pickup date & time assigned to the order.

### **Winterfell Acres**

Contact [winterfellacres@gmail.com](mailto:winterfellacres@gmail.com) | 608-628-7504

Location W1912 Mortensen Rd, Brooklyn, WI 53521

Website [winterfellacres.com](http://winterfellacres.com)

Winterfell Acres currently has spinach and chives with lettuce mix, radishes and mint coming soon. You can order their food at [landmarkcreamery.com](http://landmarkcreamery.com)



# Farm to Families / Fondo de Granjas a Familias



Haley Traun of REAP Food Group pack boxes for Farm To Families

[Farms to Families/Fondo de Granjas a Familias](#) is an emergency initiative created by a partnership between REAP, [Roots4Change](#), and [Rooted](#). The program will purchase fresh, healthy, locally grown food from regional family farms and provide it to Madison-area Latino/Indigenous residents and families hard-hit by job loss, food insecurity, lack of access to social services, and federal anti-immigration provisions.

## HOW CAN YOUR SUPPORT HELP?

**\$25** buys a week's supply of eggs for 6 families

**\$50** covers cost of one resilience box of fresh food to a family of 5

**\$100** buys a month of protective equipment for drivers and food handlers

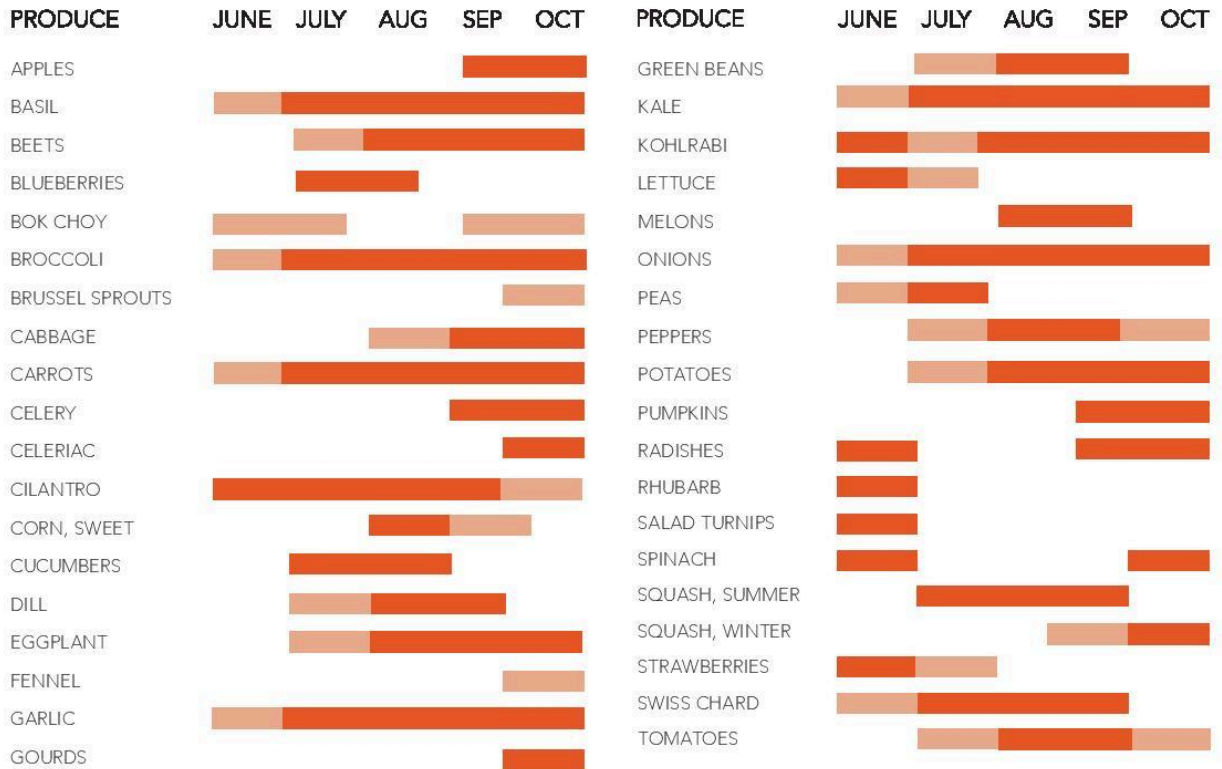
**\$350** covers the cost of delivering resilience boxes to the doors of 100 families each week.

Your contribution of **any size helps** us build a more resilient Dane County for all our residents.

[Make a Donation](#)

# Seasonality Chart

## WHAT'S IN SEASON?



AVAILABLE PARTIAL MONTH  
 AVAILABLE ENTIRE MONTH

Based on average central Wisconsin growing season. May vary.