

***ClassLink is our single sign-on program.** Once students are logged into ClassLink, they should not need a username and password to log into their school programs. Younger students will only utilize ClassLink if they need to log into a school program at home.*

Questions about ClassLink or our school digital programs? Email allsaintsedtech@aseschool.net or visit www.aseschooltechresources.com.

1 Access ClassLink

- **Computer:** Go to launchpad.classlink.com/aseschool.
- **Mobile:** Download the *ClassLink LaunchPad* app. Search for and choose our school.

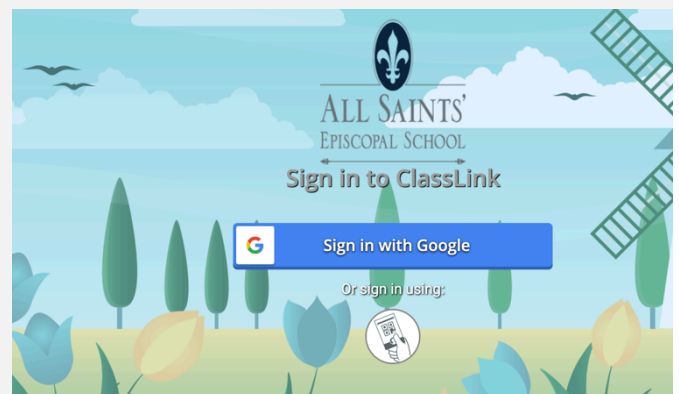


2 Sign In

Click **Sign in with Google** and log in with your @aseschool.net account.

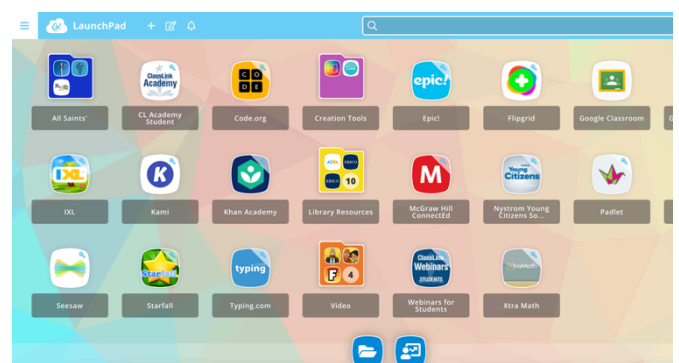
Username: Class year + last name + first letter of legal first name @aseschool.net (e.g. 30smithe@aseschool.net)

Password: For EC - 5th, first 4 letters of legal first name + 4 numbers (e.g. emil1234); for 6th & up students create



3 My Apps

The **My Apps** screen is where all of your online resources will be located. If required, enter your username and password once and ClassLink will remember it for you! (Install the ClassLink Extension, if prompted.)



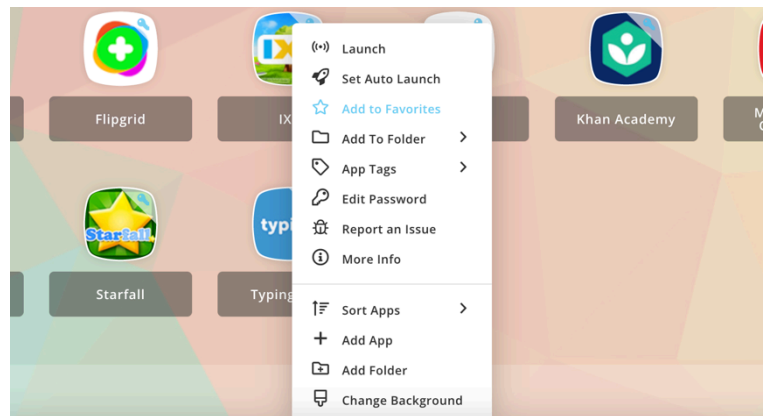
4 Edit Mode

To go into **Edit Mode**, click the paper and pencil symbol on the top left of your screen. While in Edit Mode, you can create folders and customize your My Apps screen.



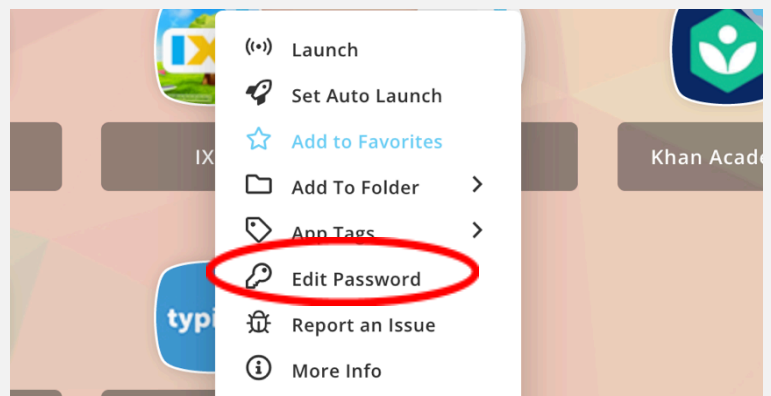
5 App Options

Right-click on an application to access its menu options in order to add it to the Favorites Bar, to a folder, to add tags, or to report issues the app may be having.



6 Edit Passwords

Right-click on an application and choose '**Edit Password**' to update or change your stored username and passwords for your applications.



7 My Profile

Here is where you change your profile picture, themes & colors, access your password locker and choose password recovery options.

