



## Article Title (English, Capitalize Each Word, 12 pt, bold, max. 16 words)

First Author<sup>1\*</sup>, Second Author<sup>2</sup>, Third Author<sup>3</sup>

<sup>1</sup>Author affiliation: Department/Program, Faculty, University, City, Country

<sup>2</sup>Department of Biochemistry and Medicinal Chemistry, Faculty of Medicine, Universitas Sriwijaya, Palembang, Indonesia

<sup>3</sup>Biomedical Sciences Doctoral Program, Faculty of Medicine, Universitas Sriwijaya, Palembang, Indonesia

### ARTICLE INFO

#### Keywords:

3-5 keywords

(Enter after each keyword)

#### Corresponding author:

First Author

#### E-mail address:

firstauthor@unsri.ac.id

Please add the corresponding author's phone/Whatsapp number here. We will not publish your phone number; the number will solely be used for easier communication between the editorial team and the author(s).

All authors have reviewed and approved the final version of the manuscript.

<https://doi.org/10.32539/BJI.v7i3.538>  
(to be filled by the journal)

### ABSTRACT

A 250-word abstract that is concise and factual is required. The abstract should briefly describe the purpose of the review, its principal findings, and main conclusions. Because an abstract is frequently presented independently from the article, it must be able to exist on its own. Therefore, References should be avoided; however, if absolutely necessary, cite the author(s) and year(s). Additionally, non-standard or uncommon abbreviations should be avoided, but if absolutely necessary, they must be defined upon first mention in the abstract itself.

## 1. Introduction

The introduction should state the general findings of the review (what do most of the sources conclude), and comment on the availability of sources in the subject area. It also should contain the background of the study. The rationale and significance of the literature review should also be explained in this part. The study's novelty and aims or research question should also be written in this section.

## 2. Main Body

Organize the evaluation of the sources in chronological and thematic approaches. Each work should be critically summarized and evaluated for its premise, methodology, and conclusion. It is as important to address inconsistencies, omissions, and errors, as it is to identify accuracy, depth, and relevance. Use logical connections and transitions to connect sources. Placement of the tables and figures should be at the top or bottom of the page, as shown in the following example (Table 1).

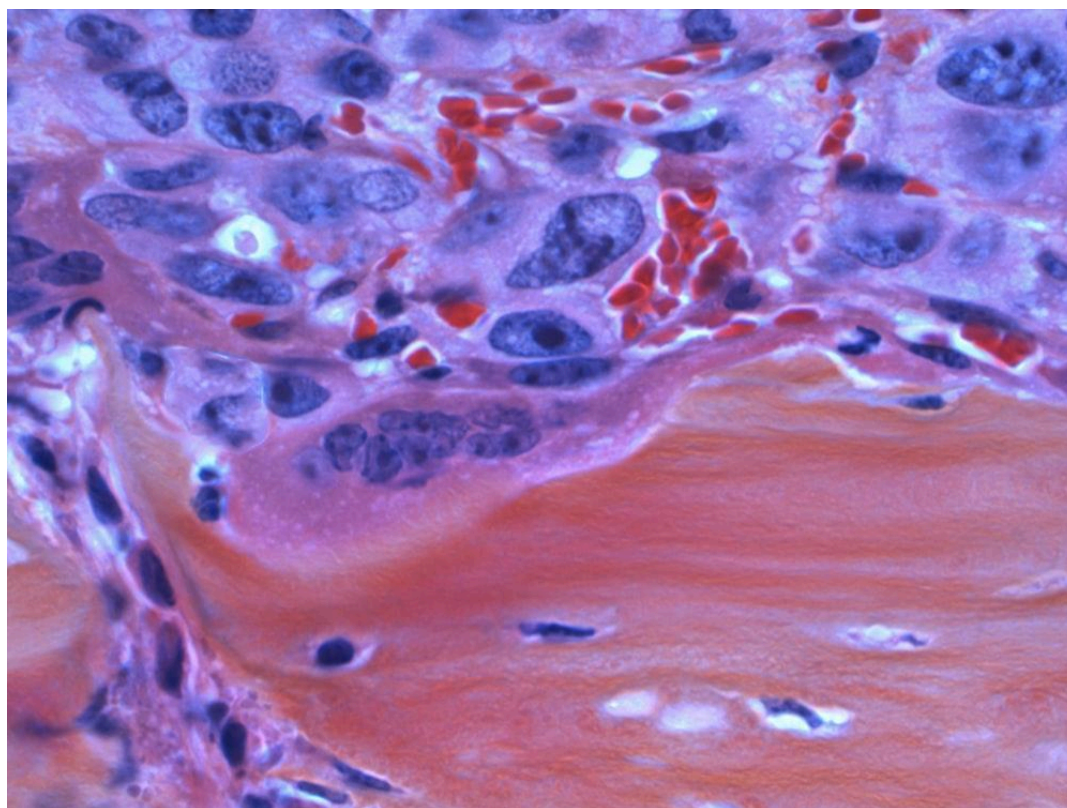
Table and figure titles should be written in sentence case, as shown in the following examples (Figure 1).

**Table 1. Sample table placement in your article**

**(Cambria font, 10 pt, Bold, centered. Text within table should be 10 pts or smaller.)**

| Treatment Group | Wound area (cm <sup>2</sup> ) |                     | p |
|-----------------|-------------------------------|---------------------|---|
|                 | Pre-treatment Mean            | Post-treatment Mean |   |

|                            |       |       |         |
|----------------------------|-------|-------|---------|
| Salve base                 | 2.403 | 0.356 | 0.001** |
| Binahong leaf extract 2.5% | 2.368 | 0.225 | 0.001** |
| Binahong leaf extract 5%   | 1.427 | 0.259 | 0.001** |
| Binahong leaf extract 10%  | 2.069 | 0.198 | 0.001** |
| Povidone iodine 10%        | 2.208 | 0.302 | 0.001** |
| Paired T test, p = 0.05    |       |       |         |



**Figure 1. Sample figure placement**

**(Sample photo by the National Cancer Institute on Unsplash)**

**(Cambria, 10 pt, Bold, centered and sentence case.)**

### 3. Conclusion

The conclusion summarizes the key findings of the review in general terms. Notable commonalities between works, whether favourable or not, may be included here.

### 4. Author Contribution

A.B. and B.C. carried out the experiment. A.B. wrote the manuscript with support from C.D.. D.E. and E.F. fabricated the XYZ sample. F.G. and G.H. helped supervise the project. G.H. and H.I. conceived the original idea. H.I. supervised the project.

### 5. Acknowledgements

You may thank your collaborators, sponsors, and other institutions/parties contributing to your research here.

### 6. References

A minimum of 15 references is required for one article, 85% of which should be of journal articles from the past 10 years. The citation style used in the Biomedical Journal of Indonesia is **Vancouver superscript**, and DOI identifiers should be appended where applicable.

Please use a citation manager (**Mendeley**) to manage your citations and ensure the citation style is correct.

Articles containing references written manually without using a citation manager will be returned to the authors for revision before the review phase.

Citation examples are as follows.

1. Wong SY, Manikam R, Muniandy S. Prevalence and antibiotic susceptibility of bacteria from acute and chronic wounds in Malaysian subjects. *J Infect Dev Ctries*. 2015;9(9):936–44.

If the authors of your reference are more than 6 people, the first 6 names are given, followed by et al.

2. Wang L, Qin W, Zhou Y, Chen B, Zhao X, Zhao H, et al. Transforming growth factor  $\beta$  plays an important role in enhancing wound healing by topical application of Povidone-iodine. *Sci Rep*. 2017; (March): 1–8. doi: 10.1038/s41598-017-01116-5.

Citing from books:

3. Tejiram S, Kavalukas SL, Shupp JW, Barbul A. Wound healing. In: Ågren M, editor. *Wound Healing Biomaterials*. Cambridge: Woodhead Publishing; 2016. p. 3–39.

Citing from internet sources (such as institution websites):

4. Kementerian Kesehatan RI. InfoDatin Situasi Demam Berdarah Dengue. Kemenkes RI [Internet]. 2018; 31(1): 71. Available from: <https://www.kemkes.go.id/download.php?file=download/pusdatin/infodatin/InfoDatin-Situasi-Demam-Berdarah-Dengue.pdf>.