



**The title must be short, clear and reflect the contents of the manuscript. No more than 16 words. (Times New Roman Font 14)**

**Name of first author <sup>1\*</sup>, Second Author <sup>2</sup> (Times New Roman. Font 10)**

**The author's name for the notification is marked with an asterisk in uppercase (superscript)**

<sup>1</sup> Author's institution, address and country of origin

<sup>2</sup> Author's institution, address and country of origin

**Affiliation must include Laboratory/Department, Faculty, University/Institute, City, Country (Times New Roman. Font 10)**

**\* Corresponding author :**

*Received :*

*Revised :*

*Accepted :*

*First Publish Online :*

*Keywords : Minimum of 3  
(three) words and a  
maximum of 6 (six) words*

#### **ABSTRACT**

Abstracts are made in two languages, Indonesian and English. Abstract contains briefly about the background, objectives, methods, significant results, conclusions and implications of research results. Abstract contains a **maximum of 200 words**, single space, Times New Roman font 10 pt, 1 space. Below the abstract is indicated a keyword consisting of a maximum of six words, of which the first word is the most important. Abstract in English is a translation from Indonesian. The editor has the right to edit the abstract for reasons of clarity of the abstract content.

This is an open-access article under the [CC-BY-SA](#) license



## **Introduction (Bold, Time New Roman Font 14)**

The introduction is written with 1.5 spacing in Times New Roman 12 pt font. It contains the background, discussion of the problem to be described, relevant literature review, objectives, and significance of the research. The literature review consists of the most recent articles related to the topic discussed, published within the last five years. Literature published over a longer period of time may be used as long as it is still relevant, and the amount should not exceed 50% of the total literature. References must be publications from the last 10 years, with a minimum of 80% journals and 20% textbooks. For writing the article content, this template should be used to facilitate the author in arranging the layout of the article written. The editor-in-chief will check the conformity of the article content with the prepared article template, so it is expected that the article follows these writing rules as best as possible so that when printed as a journal, it will be uniform for each article written. Writing references in the text follows APA style format. Citing quotations, such as "**Aswarina (2023) in Khairiza**

et al., (2022)", and using 'Anonymous' as a reference is not allowed. Examples of writing the author's name when citation at the beginning or end of the sentence such as the name of a single author in Citation: **Mustaqim (2023)** states that... or... has an effect on different conditions (**Agung, 2022**). The names of two authors in Citation: **Shafwan and Mustaqim (2024)** state that... or... in optimal conditions (**Gilang and Mustaqim, 2023**). The names of three authors in Citation: **Mustaqim et al. (2022)** state that or improves the quality of chicken meat (**Chairunas et al., 2022**).

## **Material and Methods (Bold, Time New Roman Font 14)**

### **Subtitle (Bold, Time New Roman Font 12)**

Materials and Methods are written with 1.5 spacing in 12-point Times New Roman font. They clearly cover the location and time, experimental plan, implementation method, and data analysis. Materials and Methods can be divided into sub-chapters to facilitate reader understanding of the manuscript. Methods that are generally known or have been published only need to include the source or reference. For special (modified) or new processing and analysis methods, the working procedures are listed in detail. Sub-headings can be adjusted to suit the methods used in each study.

### **Research Location and Time**

(The research time (month and year) can be specified. The research location should also include sampling, laboratory evaluation, and geographic location (if exploratory research).)

### **Experimental Design**

(The research should include how the experimental plan was conducted, population determination, sampling method, sample maintenance during the research period, and the euthanasia method for sampling (if applicable).)

### **Research Methods and Parameters**

(All laboratory and field tests, observations, and evaluations must be disclosed. The methods should describe the research procedures in detail and systematically so they can be replicated by other studies in the future. The research should include data collection methods, applied methods, and parameters used (if any).)

The formulation should be narrative, accompanied by reference sources.

Example: Total weight gain was calculated using Effendie's (1997) formula:

$$W_m = \text{Weight} - W_o]$$

$W_m$  = Absolute weight gain (grams),  $W_t$  = Biomass weight at the end of the study (grams),  $W_o$  = Biomass weight at the beginning of the study (grams).

## Data Analysis

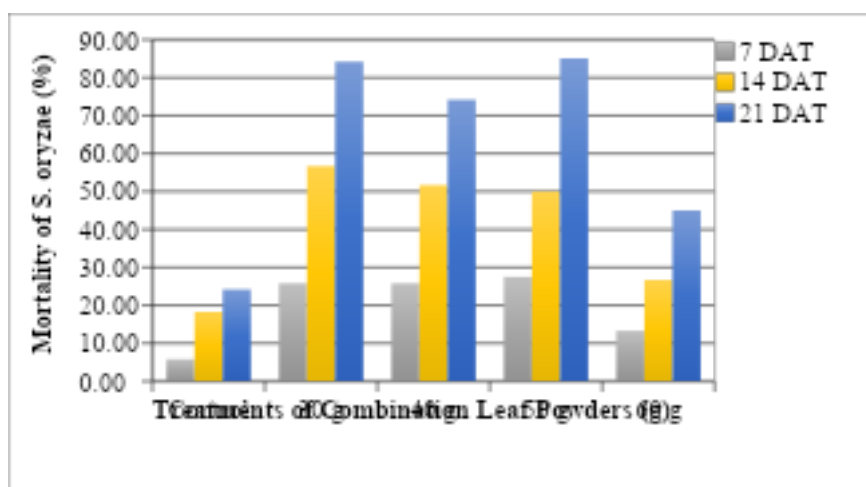
(The study should include how the data was tabulated, explained, what statistical standards were used to interpret the results, and what software was used. Formulas or equations may also be used in the data analysis.)

## Results and Discussion (Bold, Time New Roman Font 14)

### Results (Bold, Time New Roman Font 12)

The results are written with 1.5 spacing and 12-point Times New Roman font. The data are presented concisely and concisely, explaining only significant findings relevant to the discussion presented based on the method used. If you wish to refer to a table/graph/diagram, or image, the results in that section can be explained clearly without using the phrase 'See Table 1/Figure 1'. If using the average value, the standard deviation must also be included.

**Images.** Images should be given a short, clear title and numbered sequentially according to the caption. The font used is **Times New Roman 10 pt.**



**Figure 1.** Figures can be photographs, graphs, diagrams, and maps. Figure captions must be concise and clear. They must be self-contained and written in Indonesian. Figures must be submitted in .jpeg format with a minimum resolution of 300 dpi and line drawings at a minimum of 600 dpi. Figures must be submitted separately from the main text or in a separate file.

**Tables.** Tables should be given a short and clear title in Indonesian. Tables should be numbered sequentially according to the title in the text and should be typed in Times New Roman 10 pt. The table title should be placed below the table. Tables should not be enclosed by vertical lines; a horizontal line separating the title from the bottom margin is sufficient.

Examples are as below:

**Table 1.** Result from phytochemical test of powder combination of fragrant pandan and wuluh starfruit

Bioactive Compounds	Reagent	Inference
Alkaloids	Mayer	-
	Wagner	-
	Dragendorff	-
Steroids	Liebermann-Burc	+
	hard's test	
Terpenoids	Liebermann-Burc	+
	hard's test	
Saponins	Frothing test	+
Flavonoids	Shinoda's test	+
Phenolic	FeCl <sub>3</sub>	+
Tannins	Gelatin+H <sub>2</sub> SO <sub>4</sub>	+

Information : .....

### **Discussion** (Bold, Time New Roman Font 12)

The discussion should be written with 1.5 spacing in 12-point Times New Roman font. The discussion should not be a summary of the results. It should explain the reasons for the results and their significance. If possible, the results of this study should be compared with previous research. The discussion should be consistent and should interpret the results clearly and concisely, addressing the biological mechanisms and their significance, supported by appropriate literature. The discussion should demonstrate the relevance of the results to the field of inquiry.

### **Conclusions** (Bold, Time New Roman Font 12)

The conclusion should be written briefly in one paragraph, but reflect the experimental results obtained, with a maximum of 100 words and the font used is Times New Roman 12 pt. Suggestions may be added if necessary.

### **Acknowledgment (Bold, Time New Roman Font 12)**

Thank you (if any) to the people or institutions who assisted with the research. The font used is Times New Roman 12 pt.

### **References (Bold, Time New Roman Font 12)**

The bibliography is located at the end of the article and is arranged alphabetically by the main author's last name. A minimum of 25 references should be cited. The font used is Times New Roman 12 pt, with 10 mm hanging format, as in the example below. Text or sentences within the main idea that refer to the references should be marked with the author's last name. Citations and references are written in APA style and accompanied by DOIs if available. We recommend authors use a reference management system (RMS) such as Mendeley, Zotero, or Endnote.

#### **Journal:**

Mustaqim, M., Zulkifli, Z., Jannah, C.R., Salsabila, S. (2021). The supplementation of Fermented Feed (*Indegofera Sp* and *Eurycoma longifolia*) Leaves on Arabic Chicken Semen. *Sustainable Environment Agricultural Science*. Vol. 5, No.2 : 130 – 135. [doi.org/10.22225/seas.5.2.3984.130-135](https://doi.org/10.22225/seas.5.2.3984.130-135)

#### **Book:**

Coleman, K., & Schapiro, S. J. (2021). *Behavioral Biology of Laboratory Animals*. CRC Press. Eurell, J. A., & Frappier, B. L. (2013). *Dellmann's textbook of veterinary histology*. John Wiley & Sons.

#### **Proceedings:**

Batubara, A. S., Pangabea, A. S., Rahmatsyah, R., Juliani, R., Syarifuddin, S., Muliari, M., & Irfannur, I. (2025). Inventory of introduced fish species traded in Medan Regency, North Sumatra, Indonesia. In *BIO Web of Conferences*, 156, 03022. doi: [10.1051/bioconf/202515603022](https://doi.org/10.1051/bioconf/202515603022)

#### **Skripsi/Thesis/Disertasi:**

Swanepoel, J. C. (2021). *Determination of bioavailability and bioactivity of enzymatically hydrolysed fish protein and phosphates in the African catfish Clarias gariepinus* [Doctoral Dissertation]. Stellenbosch: Stellenbosch University.