



**Republic of the Philippines**  
**Department of Education**  
**REGION IV-A**  
**SCHOOLS DIVISION OFFICE OF CAVITE PROVINCE**  
**DISTRICT OF GENERAL EMILIO AGUINALDO**

---

**Second Periodical Examination in Science 5**  
**SY 2022 – 2023**

Directions: Read each statement carefully. Choose the letter of the best answer, and write your answer in your answer sheet.

**NON-SOLO (Part 1)**

1. This is a part of the female reproductive organ where the egg cells get matured and are released.
  - a. Fallopian tube
  - b. Fimbriae
  - c. Ovary
  - d. Vagina
  
2. What is the function of the male reproductive system in human reproduction?
  - a. it produces hormones called testosterone
  - b. it is responsible from the deepening of male's voice
  - c. it provides hormones to develop male characteristics
  - d. it produces sperm cells needed to fertilize egg cells to produce an offspring
  
3. Which of the following organs flushes out foreign matters in a man's urethra?
  - a. Cowper's gland
  - b. epididymis
  - c. penis
  - d. vas deferens
  
4. When a girl starts getting her menstruation, it becomes a continuous cycle that end when they are around a certain age. At what age do women start getting menopause?
  - a. at 35 years old
  - b. at 45 years old
  - c. at 55 years old
  - d. at 65 years old
  
5. How many days does it usually take to complete the menstrual cycle?
  - a. 7 days
  - b. 14 days
  - c. 21 days
  - d. 28 days
  
6. Edward is an 11-year old Grade 5 pupil. He started noticing the changes in his body. Which changes has he experienced?
  - I. Muscles develop
  - II. Pubic hair starts growing
  - III. Menstruation starts occurring
  - IV. Adam's apple becomes bigger
  - a. I and II
  - b. II and III
  - c. I, II, and IV
  - d. II, III, and IV
  
7. How does sexual reproduction happen in animals?
  - a. when sperm cell and egg cell unite
  - b. when 2 sperm cells unite with 1 egg cell
  - c. when 2 sperm cells unite with 2 egg cells
  - d. when sperm cell unites with another sperm cell





**Republic of the Philippines**  
**Department of Education**  
**REGION IV-A**  
**SCHOOLS DIVISION OFFICE OF CAVITE PROVINCE**  
**DISTRICT OF GENERAL EMILIO AGUINALDO**

---

8. Chicks are hatched from eggs. Goats are born alive and look like its parents. Frogs undergo many changes as they grow. What do these observations prove?
- all animals are born alive
  - all animals are hatched from eggs
  - different animals move in different ways
  - different animals reproduce in different ways
9. Which part of a flower produces the pollen?
- ovary
  - petal
  - pistil
  - stamen
10. You observed that the ovary of a wilted flower is becoming bigger. What does this show?
- The ovary is going to break.
  - The ovary is going to drop.
  - The ovary is developing a seed inside it.
  - More ovules are being produced in the ovary.
11. This type of pollination happens when pollen grains from the anther are transferred to the stigma of a flower that belongs to the same plant?
- across-pollination
  - auto-pollination
  - cross-pollination
  - self-pollination
12. Which is TRUE about asexual reproduction?
- Only plants use asexual reproduction.
  - All organisms use asexual reproduction.
  - There is only one parent involved in the reproduction.
  - There are at least two parents involved in the reproduction
13. Bulb is a plant with rounded stems and fleshy parts. Which of the following plants can reproduce through a bulb?
- coconut
  - fern
  - mango
  - onion
14. Which of the following is NOT TRUE about monocotyledonous plant?
- the roots are fibrous
  - flowers come in multiples of 3
  - the leaves have parallel veins
  - the vascular region of a plant is ringed
15. Which of the following shows a TRUE statement about the modes of reproduction in plants?
- All plants have seeds.
  - Flowering plants are called angiosperms.
  - Monocotyledonous plants have flowers with 4 or 5 petals.
  - Dicotyledonous plants have seeds which have one cotyledon.





Republic of the Philippines  
Department of Education  
REGION IV-A  
SCHOOLS DIVISION OFFICE OF CAVITE PROVINCE  
DISTRICT OF GENERAL EMILIO AGUINALDO

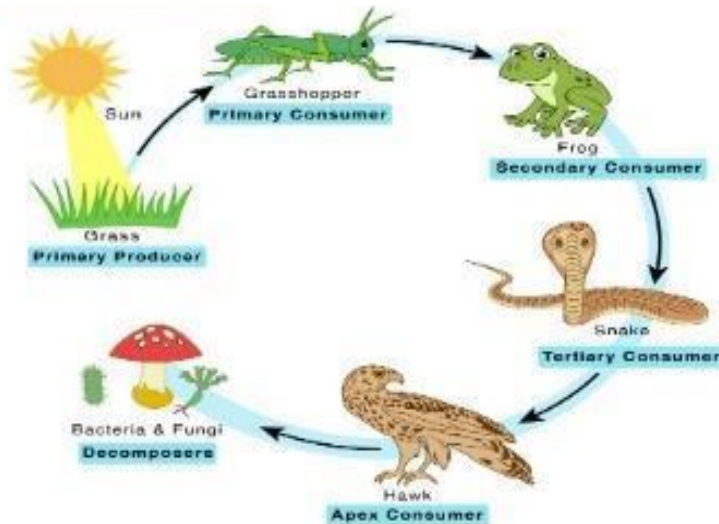
16. There are non-living factors that affect the organisms living in intertidal zones and estuaries such as temperature, salinity, and sunlight. What do you call these factors?

- a. abiotic factors
- b. biotic factors
- c. non-abiotic factors
- d. unbiotic factors

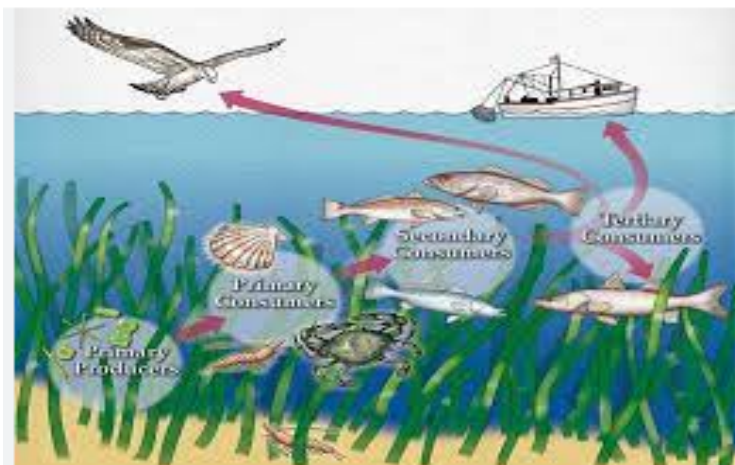
17. It is an area filled with trees that have adapted to saltwater. It protects the coast against strong waves and erosion, and it protects the coral reefs near it.

- a. Mangrove forest
- b. Mudflats
- c. Rocky shore
- d. Salt marshes

18. Food chain is a series of organisms in which each organism feeds on another organism. By analyzing each diagram, which does NOT show a food chain?



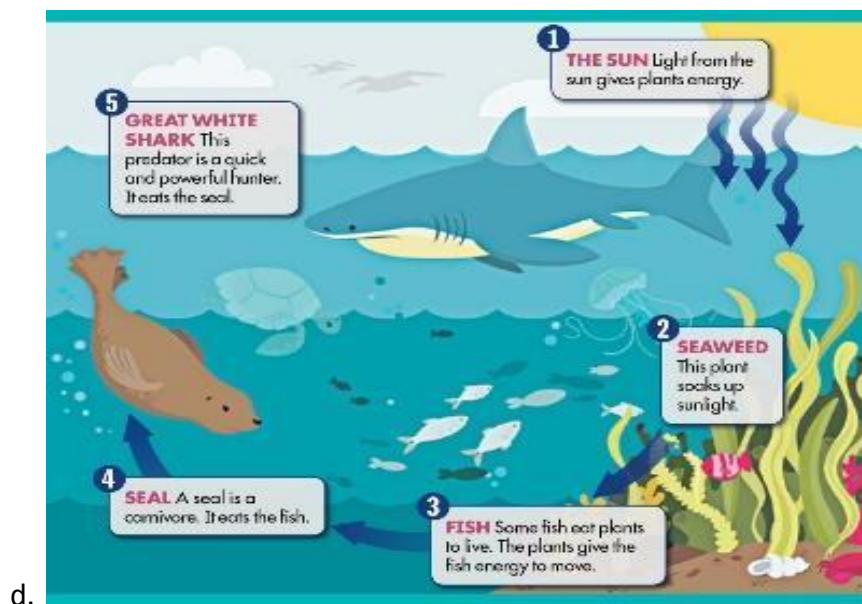
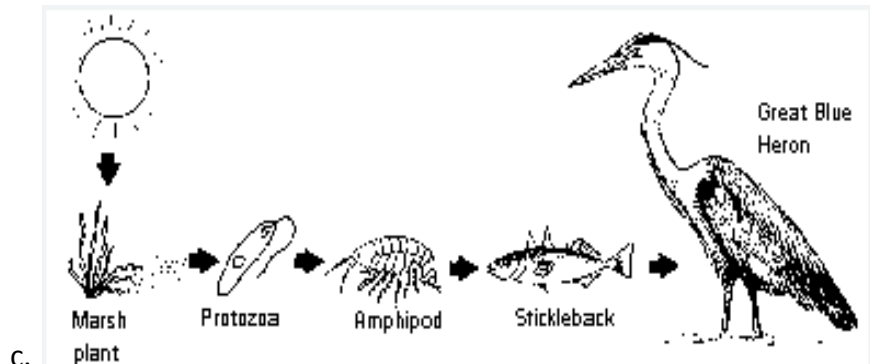
a.



b.



Republic of the Philippines  
Department of Education  
REGION IV-A  
SCHOOLS DIVISION OFFICE OF CAVITE PROVINCE  
DISTRICT OF GENERAL EMILIO AGUINALDO



19. Human beings make activities that are harmful to the ecosystem. Which of the following statements says a fact on each human activity?

- Overexploitation is an activity where fishermen get few fish and sea animals to sell.
- Overconsumption is an activity where people buy and consume more than what they need.
- Deforestation is an activity where people go to an empty land/area to plant trees for the future.
- Population growth happens when there are a lot of fish in the sea and the people only gather what they need.

20. As a Grade 5 pupil who aims to help the environment, what should you do in order to save the ecosystem?

- Use organic fertilizers in planting.
- Throw your pet's waste in the waterways.
- Use motorized boats when traveling in the waters.





**Republic of the Philippines**  
**Department of Education**  
**REGION IV-A**  
**SCHOOLS DIVISION OFFICE OF CAVITE PROVINCE**  
**DISTRICT OF GENERAL EMILIO AGUINALDO**

---

d. Remind my parents to check and pump the septic tank every year.

**SOLO Framework (Part 2)**

1. Male and female reproductive organs play a big role in producing offspring. Which of the following are parts of the female reproductive organ?
  - a. cervix, ovary, uterus
  - b. seminal vesicle, testes, uterus
  - c. bulbourethral gland, cervix, vagina
  - d. testosterone, seminal vesicle, vas deferens
  
2. As people grow, they should be more mindful about taking care of their body, especially with their reproductive organs. Which situation shows proper taking care of the male and female reproductive system?
  - a. Samantha changes her underwear regularly.
  - b. John borrows underwear from his father's closet.
  - c. John and Samantha washes their sex organ with mild soap.
  - d. John consults a doctor when he feels something wrong in his sex organ.
  
3. The menstrual cycle happens once a month. There are four stages in this cycle. Which of the following sequences shows the correct order of the stages of the menstrual cycle?
  - a. Ovulation, Luteal Stage, Circumcision, Follicular Stage
  - b. Follicular Stage, Luteal Stage, Ovulation, Menstruation
  - c. Luteal stage, Menstruation, Ovulation, Menstruation
  - d. Follicular stage, Ovulation, Luteal stage, Menstruation
  
4. Some animals undergo sexual reproduction and their offspring are fertilized internally or externally. Which of the following animals undergo internal fertilization?

|                         |                             |
|-------------------------|-----------------------------|
| a. frogs, fishes, crabs | c. frogs, chickens, tilapia |
| b. dogs, cats, horses   | d. giraffes, cows, salmon   |
  
5. A complete flower consists of male and female reproductive parts. Which of the following are the female parts of a flower?
  - a. ovary, stigma, style
  - b. anther, stigma, style
  - c. anther, filament, sepal
  - d. anther, filament, stigma
  
6. There are modified roots and stems used in vegetative propagation. What plants use stems and roots in reproduction?
  - I. Garlic cloves are planted when a sprout begins to start.
  - II. Onion bulbs are peeled and planted to reproduce them.
  - III. Kalabasa seeds are planted and watered for it to grow.
  - IV. Eggplant cuttings are planted and watered until a sprout starts to grow.

|            |             |
|------------|-------------|
| a. II only | c. I and II |
|------------|-------------|





**Republic of the Philippines**  
**Department of Education**  
**REGION IV-A**  
**SCHOOLS DIVISION OFFICE OF CAVITE PROVINCE**  
**DISTRICT OF GENERAL EMILIO AGUINALDO**

---

b. I and III

d. IV only

7. Asexual reproduction in plants does not involve seeds to produce a new plant. Which among the following shows the advantages and disadvantages of asexual reproduction?

a. The pollen grains of a plant get transferred to the other plant of the same kind.

b. Most plants have a great ability to create their offspring as this process doesn't need to move to another place.

c. There is only one parent involved, therefore, the offspring plant will get the genetic defects or the mutation from the parent plant.

d. Asexual reproduction has a rapid increase of offspring which is very helpful in producing lots of offspring, however, this usually leads to struggle for the existence as well as the overcrowding.

8. There are different types of consumers in the estuaries and intertidal zones. Which of the following statements is correct about consumers?

a. Omnivores are called primary consumers.

b. Carnivores are organisms that eat meat and other animals.

c. Producers are organisms that use sunlight as a source of energy.

d. Herbivores are organisms that only eat plants and are also called secondary consumers.

9. Human activities are one of the main reasons why there is a threat in the estuaries and intertidal zones. Which of the following human activities cause threat to the ecosystem?

I. Santos family throws their toxic products properly.

II. Nina and Mitch started planting trees in their backyard,

III. Mang Isko and his fellow fishermen gather a lot of fish by using dynamite.

IV. An industrial company releases its garbage in the river near the building.

a. I only

b. IV only

c. III and IV

d. I, III, and IV

10. A new shopping center was built on a reclaimed estuary. The table below shows the number of plants before and after the construction.

| Plants  | Before Construction | After Construction |
|---------|---------------------|--------------------|
| Flowers | 500                 | 1000               |
| Grass   | 1000                | 0                  |
| Shrubs  | 260                 | 50                 |
| trees   | 26                  | 3                  |

based on the given data?

I. Humans did not change the environment.

II. Grass are abundant after the shopping center was built.

III. Trees were logged as the shopping center is constructed.

Which of the following states

a. I and V

b. I and II

c. I, III, and IV

d. III, IV, and V



Castaños Cerca, General Emilio Aguinaldo, Cavite  
0917-185-2414

DepEd Tayo GEA District – Cavite Province  
Depedcavite.geadistrict@gmail.com



**Republic of the Philippines**  
**Department of Education**  
**REGION IV-A**  
**SCHOOLS DIVISION OFFICE OF CAVITE PROVINCE**  
**DISTRICT OF GENERAL EMILIO AGUINALDO**

---

- IV. There are fewer plants after the shopping center was built.  
V. There were more kinds of flowers after the shopping center was built.

**First Periodical Examination**  
**Science 5**

**Answer Key: Non-SOLO items**

|       |       |
|-------|-------|
| 1. C  | 11. D |
| 2. D  | 12. C |
| 3. A  | 13. D |
| 4. B  | 14. D |
| 5. D  | 15. B |
| 6. C  | 16. A |
| 7. A  | 17. A |
| 8. D  | 18. B |
| 9. D  | 19. B |
| 10. C | 20. A |

**SOLO Framework**

| Item Number | Assigned Number of Points per Option |   |   |   |
|-------------|--------------------------------------|---|---|---|
|             | A                                    | B | C | D |
| 1           | 3                                    | 1 | 2 | 0 |
| 2           | 1                                    | 0 | 3 | 1 |
| 3           | 0                                    | 2 | 1 | 3 |
| 4           | 0                                    | 3 | 1 | 2 |
| 5           | 3                                    | 2 | 0 | 1 |
| 6           | 2                                    | 1 | 3 | 0 |
| 7           | 0                                    | 1 | 1 | 3 |
| 8           | 1                                    | 3 | 0 | 2 |
| 9           | 0                                    | 1 | 3 | 2 |
| 10          | 1                                    | 0 | 2 | 3 |





**Republic of the Philippines**  
**Department of Education**  
**REGION IV-A**  
**SCHOOLS DIVISION OFFICE OF CAVITE PROVINCE**  
**DISTRICT OF GENERAL EMILIO AGUINALDO**

---



---

Castaños Cerca, General Emilio Aguinaldo, Cavite  
0917-185-2414  
DepEd Tayo GEA District – Cavite Province  
Depedcavite.geadistrict@gmail.com



**Republic of the Philippines**  
**Department of Education**  
**REGION IV-A**  
**SCHOOLS DIVISION OFFICE OF CAVITE PROVINCE**  
**DISTRICT OF GENERAL EMILIO AGUINALDO**

**SECOND PERIODICAL TEST IN SCIENCE 5**  
**TABLE OF SPECIFICATION (TOS)**

| Topic/<br>Content<br>Domain | Content<br>Standard                                 | Performance<br>Standards                                   | MELC/ No.   | Instru-<br>tional<br>Time | No. of Items |      | % of<br>Items | Revised Blooms (R, U, Ap, An, E, C) and<br>Knowledge Dimension (F, C, P, M) |   |    |                             |   |   |
|-----------------------------|---|--|---|---------------------------|--------------|------|---------------|---|---|----|-----------------------------|---|---|
|                             |   |  |   |                           | Non<br>SOLO  | SOLO |               | Number and Placement of items   |   |    |                             |   |   |
|                             |   |  |   |                           |              |      |               | R   | U | Ap | An                          | E | C |
| <b>Second Quarter</b>       |   |  |   |                           |              |      |               |   |   |    |                             |   |   |
| Science                     | How the parts of the human reproductive system work | Practice proper hygiene to care of the reproductive organs | *Enabling Competency:<br>Give ways of taking care of the reproductive organs*<br><br>Describe the parts of the reproductive system and their functions<br><b>S5LT-IIa-1</b> | 5 days                    | 3            | 2    | 12.5          | 1<br>3<br>SOLO<br>Factua<br>l<br>1  | 2 |    | SOLO<br>Conce<br>ptual<br>2 |   |   |
|                             |   |  | *Enabling competency: Describe  | 5 days                    | 3            | 1    | 12.5          | 4<br>5  |   |    | 6                           |   |   |



**Republic of the Philippines**  
**Department of Education**  
**REGION IV-A**  
**SCHOOLS DIVISION OFFICE OF CAVITE PROVINCE**  
**DISTRICT OF GENERAL EMILIO AGUINALDO**

|  |                     |   |  |         |   |   |      |    |    |  |                             |  |  |
|--|---------------------|---|--|---------|---|---|------|----|----|--|-----------------------------|--|--|
|  |                     |   | the changes that occur during puberty*<br>Explain the menstrual cycle<br><b>S5LT-IIc-3</b>   |         |   |   |      |    |    |  | SOLO<br>Conce<br>ptual<br>3 |  |  |
|  | How animals produce | Create a hypothetical community to show how organisms interact and reproduce to survive | Describe the different modes of reproduction in animals such as butterflies, mosquitoes, frogs, cats and dogs<br><b>S5LT-IIe-5</b> | 5 days  | 2 | 1 | 12.5 |    | 7  |  | 8                           |  |  |
|  |                     |   | Describe the reproductive parts in plants and their functions<br><b>S5LT-IIf-6</b>   | 5 days  | 2 | 1 | 12.5 | 9  |    |  | 10                          |  |  |
|  |                     |   | Describe the different modes of reproduction in flowering and non-flowering plants   | 10 days | 5 | 2 | 25   | 11 | 13 |  | 12<br>14<br>15              |  |  |



**Republic of the Philippines**  
**Department of Education**  
**REGION IV-A**  
**SCHOOLS DIVISION OFFICE OF CAVITE PROVINCE**  
**DISTRICT OF GENERAL EMILIO AGUINALDO**

|              |  |  |   |                |           |           |             |                             |          |    |                                     |  |  |
|--------------|--|--|---|----------------|-----------|-----------|-------------|-----------------------------|----------|----|-------------------------------------|--|--|
|              |  |  | such as moss, fern, mongo and others<br><b>S5LT-IIg-7</b>   |                |           |           |             |                             |          |    | Conceptual<br>6<br>7                |  |  |
|              |  |  | Discuss the interactions among living things and non-living things in estuaries and intertidal zones<br><b>S5LT-IIh-8</b> | 5 days         | 2         | 1         | 12.5        | 17<br>SOLO<br>Factua<br>l 8 | 16<br>18 |    |                                     |  |  |
|              |  |  | Explain the need to protect and conserve estuaries and intertidal zones<br><b>S5LT-II-j-10</b>                            | 5 days         | 3         | 2         | 12.5        |                             |          | 20 | 19<br>SOLO<br>Conceptual<br>9<br>10 |  |  |
| <b>Total</b> |  |  |   | <b>40 days</b> | <b>20</b> | <b>10</b> | <b>100%</b> |                             |          |    |                                     |  |  |

Prepared by:

**ZHENALIE MAE B. GLORIANI**

Teacher I



Castaños Cerca, General Emilio Aguinaldo, Cavite  
0917-185-2414

DepEd Tayo GEA District – Cavite Province  
Depedcavite.geadistrict@gmail.com