

Lesson 14: Reproductive parts and functions mode of reproduction of representative animals

I. Objectives:

1. Identify the parts of reproductive system of representative groups of animals (butterfly, mosquitoes, frogs, cats and dogs)
2. Explain the functions of reproductive system parts of butterfly, mosquitoes, frogs, cats and dogs
3. Describe the mode of reproduction of butterfly, mosquitoes, frogs, cats and dogs.
4. Perform a stage play manifest by the butterfly, mosquitoes, frogs, cats and dogs prior to reproduction

II. A. Materials:

Live Butterfly, mosquitoes, frogs, cats and dogs (if possible)
Pictures of the chosen animals listed above
Video clip
5 Colored Cartolina
Pentel Pen
Ruler
Strips of reproductive parts of representative animals (Butterfly, mosquitoes, frogs, cats and dogs)

B. References:

Curriculum Guide in Science 5, S5LT-IIe-5
Science A Closer Look (Phoenix Publishing House) pp.80-81
Modern Biology (Philippine Version) pp.438-440,
<https://prezi.com/oz0rubpi6s7x/butterfly-reproductive-system>

C. Process Skills: Identifying, Observing, Describing

D. Values Integration: Creativity, Cooperation

III. Learning Tasks:

A. Engagement

1. Review:

Ask the pupils whether the following statements support the general regime for the care of the reproductive system by drawing a happy face, and sad face if it is not.

- _____ 1. Do a routine or regular exercise
- _____ 2. Treat yourself to a monthly hot/cold sitz bath.
- _____ 3. Decrease the calcium and magnesium intake in your diet.
- _____ 4. Drink alcoholic brew
- _____ 5. Visiting a doctor when necessary and wearing the right clothing.

2. Motivation:

Call six volunteer pupils to do the task which contains the external body parts of the human or animal.

Each pupil will be holding a shred human body parts. Let them connect the parts according to where it should be connected.

Ask:

1. How did you find the activity?
2. What is the essence of connecting all these parts together?

B. Exploration:

1. Divide the class into five groups and introduce the activities
2. Check the materials needed for the activities. Provide the activity sheets, cartolina/manila paper, pentel pen.
3. Instruct them to perform Lesson 14: LMs Activity 1: What are the different parts of reproductive system of representative animals?; Activity 2: What are the functions of reproductive system's parts of representative animals?; Activity 3: What is the mode of reproduction of butterfly, mosquito, frog, cat and dog?; Activity 4- What activities do butterfly, mosquito, frog, cat and dog manifest prior to reproduction?
3. Give them the necessary instructions in doing the activity such as: Time Allotted, Precautionary measures, etc.
4. Instruct them to write their output on the manila paper for the group presentation.
5. Guide the pupils upon performing the activity.

C. Explanation:

1. Ask the leader of each group to present the output from the LM Activities 1,2,3 and 4
2. Let other group members explain their answers pertaining to the guide questions.
(Teacher will enhance the explanations or answers given by the pupils referring to reproductive system and mode of reproduction of animals listed above.)
 - a. How distinct the male and female reproductive system's parts from each other?
 - b. How important the function of male and female reproductive system of representative animals?
 - c. What mode of reproduction do representative animals manifest?
 - d. How diverse mode of reproduction of each of the representative animals?
3. Moreover, present other colorful pictures of representative animals such as butterfly, mosquito, frogs, cats and dogs which show the reproductive system and how they reproduce.
4. Relate this activity to other animals found in the community.

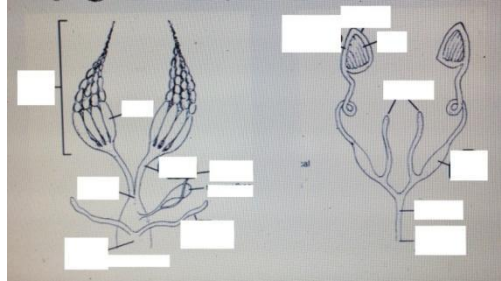
Allow them to arrive at a generalization by asking:

What are the parts and functions and mode of reproduction of representative animals? Do these parts and functions and even mode of reproduction unique from other animals in the community?

D. Elaboration:

Ask:

Fill in the male and female reproductive system specifically the butterfly. Write your answer on the box provided for.



- Most of the parts and functions of male and female reproductive system of butterfly, dogs, mosquitoes, frogs, cats and frog are closely similar from each other.
- The representative animals mate through sexual reproduction
- Some manifest internal fertilization and others external fertilization.

E. Evaluation:

I. Explain your answer briefly

1. How important to the environment and population concern reproductive system of the representative animals is?

2. Do all representative animals (butterfly, mosquitoes, frogs, cats and dogs) are manifesting internal fertilization? Explain your answer.

II. Encircle the best letter being described by the statement.

1. How do butterflies and other representative group of animals reproduce?

- a. Sexual
- b. Asexual
- c. Internal breeding of reproduction
- d. though internal fertilization

2. What part of male butterfly reproductive system conveys sperm out from the testis?

- a. Accessory gland
- b. Vas Deferens
- c. Seminal Vesicle
- d. Ejaculatory duct

3. What chemical substance releases by the female butterfly during reproduction?

- a. Pheromones
- b. Hormones
- c. Spermatophore
- d. Parthenogenesis

4. What tube allows an ovum or egg passes from an ovary?

- a. Oviduct
- b. Accessory gland
- c. Ovariol
- d. Genital chamber

5. Which of the following animals visibly show internal fertilization?

- a. Butterfly
- b. Mosquitoes
- c. Dogs
- c. Cats

Assignment:

1. Bring any kind of flowering plants.
2. Describe the reproductive parts and functions of it.