



22th Annual Farmer Invitational September 20, 2025

Hayward High School – 2025 NCS Championships Site: Course will be the same at the Championships.

Coaches,

Thank you again for your interest in the Farmer Invitational. This early meet is always about getting young and experienced runners on the NCS Championship Course. **ALL RACES WILL BE 3 MILES.** If the field at any race becomes too large we will adjust accordingly, especially in the open races. Entry fees \$10 a runner, \$700 max per school. The entry fee has been adjusted due to the cost of chips that have not been turned in at the end of meet. Thank you again and we are looking forward to seeing all of you on September 20th.

ENTRY PROCESS

- All entries will be done on www.athletic.net
- Entries will close on Wednesday, September 17, 2025 at 11:59pm

Go to athlete.net, create your account and password (if you don't already have one), add our meet to your schedule, and enter your team. Please email Benjamin Fano (bf817@husd.us) with any questions or concerns

COURSE MAPS

 **2.25 Will Mathews Memorial Run**

 **Temporary -3Mile**

SCHEDULE OF EVENTS

<u><i>Time</i></u>	<u><i>Race</i></u>	<u><i>Distance</i></u>	<u><i>Limit</i></u>
8am	Walk Course		
830am	Will Matthews Memorial Run (coaches, alumni)	Sign up the day of	2.25 mile race
905	FS Girls	7 runner max	3 Mile
935	FS Boys	7 runner max	3 Mile
1010	Open Girls	unlimited	3 Mile
1040	Open Boys 9	unlimited	3 Mile
1115	Open Boys - 10-12	unlimited	3 mile
1145	Varsity Girls	7 runner max	3 Mile
1220	Varsity Boys	7 runner max	3 Mile
1250	JV Girls	7 runner max	3 Mile
115	JV Boys	7 runner max	3 Mile

Please place runners in developmentally appropriate races. Open races will be available for runners only when specific grade races are filled by schools. IE: school must have filled JV and Varsity races before JV runners can be placed in Open. Overflow of FS runners should be JV races before the Open.

ENTRY FEES

- \$10 an individual, \$700MAX per school
- Checks should be made out to Hayward High School, please place Farmer Invitational in memo
- Please mail to Alexander Niuatoa, Athletic Director, 1633 East Ave, Hayward, CA 94541
- Payments need to be mailed prior to September 16th or brought on the day of the invitational.

You may also pay online at athletic.net

- [School W9](#)

CHIPS

- We will be using disposable chips and athletes can keep them at the conclusion of the race..

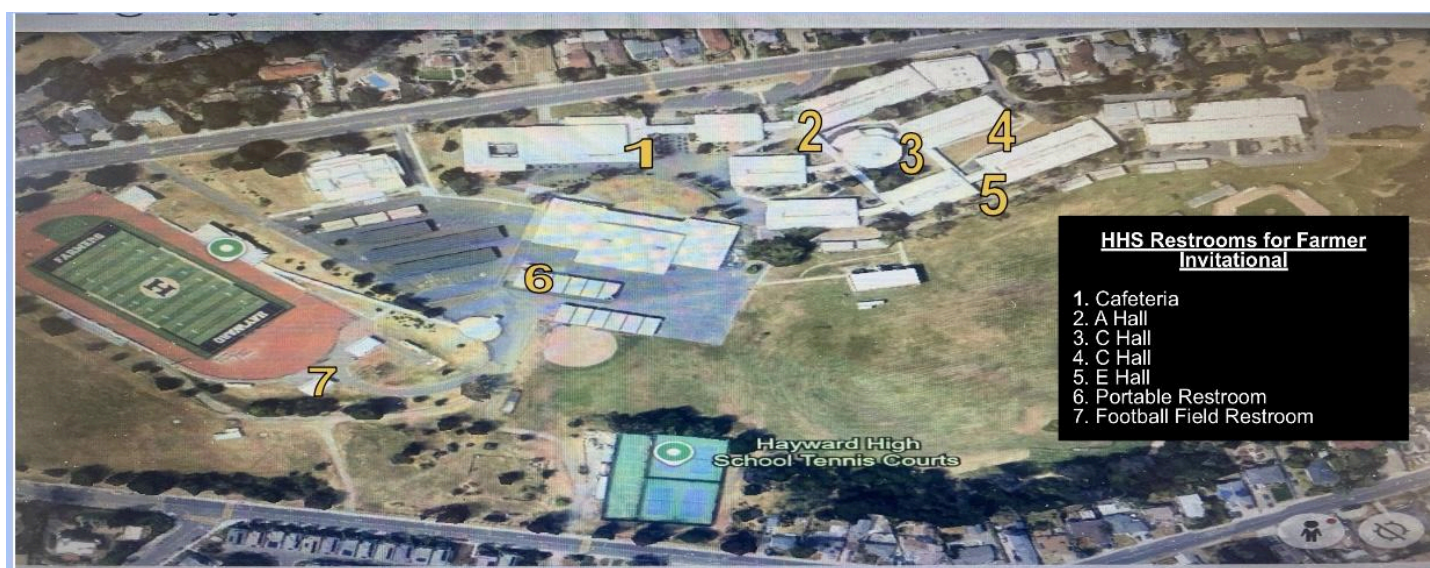
AWARDS

- Top 25 individuals in all races will receive a medal.
- Top 2 placing teams in each race (except OPEN) will receive plaques

Results will be posted after race near finish line; also available at www.prepcaltrack.com or www.haywardhigh.net

TRAINER/FACILITIES

- There will be a trainer available on site
- Locker Room will not be available for dressing/showers
- Restrooms will be available In E hall, A hall, C hall, Cafeteria, portable pottie outside of gym, and the Stadium.



SPECIAL FEATURES NOT TO BE MISSED

- Hospitality Room-Coffee/Tea/water, pastries, donuts for the coaches in F4
- Water tent around the finish line for runners when they are done
- Snack Bar provided
 - **Ascension Church Dance Program: Shawarma Food Stand**
 - **FSCCC Alameda Choir with drinks and snacks**
 - **OMG Espresso**
- And T-shirts will be available for purchase

