

2025–2026 *SDA Connect Sessions*

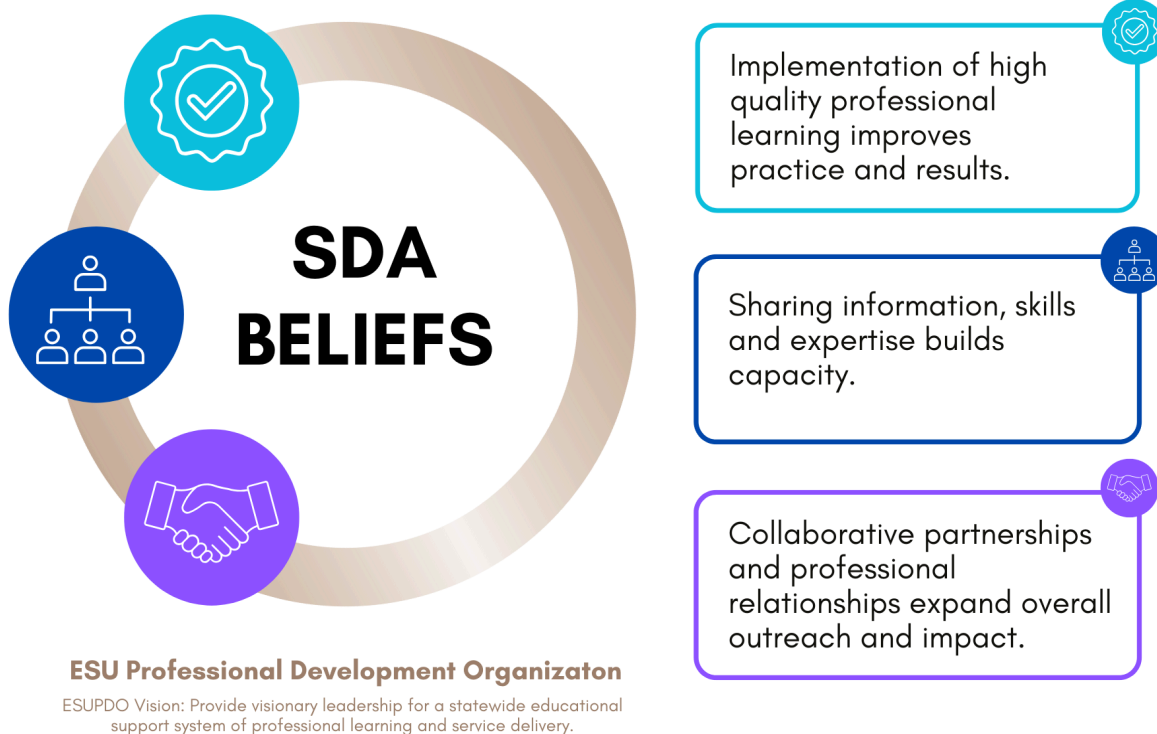
Zoom Link: <https://zoom.us/my/sdaadmin>

SDA Connect Session Information

- [August 21, 2025](#)
- [October 14, 2025](#)
- [December 18, 2025](#)
- [February 12, 2026](#)
- [March 12, 2026](#)

Staff Development Affiliate

The purpose of SDA is to provide collaboration and learning opportunities for its members.



March 12, 2026
12:00 pm–1:00 pm

Strategist
Facilitators

<p>Say Hi & Catch Up</p> <p>Name, organization (affiliate)</p> <p>Learning Together Discussion–</p> <p>Logistics & Reminders</p>	
<p>February 12, 2026 12:00 pm–1:00 pm</p>	<p>Strategist Facilitators</p>
<p>Say Hi & Catch Up</p> <p>Name, organization (affiliate)</p> <p>Learning Together Discussion–</p> <p>Logistics & Reminders 2025–26 Important Dates </p>	
<p>December 18, 2025 12:00 pm–1:00 pm</p>	<p>Strategist Facilitators</p>
<p>Say Hi & Catch Up</p> <p>Name, organization (affiliate)</p> <p>Learning Together Discussion</p> <p>Logistics & Reminders SDA Site 2025–26 Important Dates Remember to register for our January SDA Business Meeting! </p>	

Say Hi, Meet New Folks, & Catch Up

Name, ESU, Affiliation, add an asterisk if you are new to our group







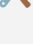
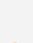
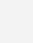
Amy Schultz, ESU 9, SDA
*Kayla Perry, ESU 9, SDA
Dianah Steinbrink, ESU 10, SDA
*Amy Coufal, ESU 5, SDA
*Tricia Hintz, ESU 5, SDA
Heather Stuke, ESU 10, SDA
Jesse Zavadil ESU 8, SDA
Steph Lundgren, ESU 8, SDA
Brooke Koliha, ESU 7, SDA
Katie Soto, ESU 9, SDA
*Shalee Lindsey, ESU 9, SDA
LaRaesha Kugel, ESU 9, SDA
Jen Madison, ESU 4, SDA
Adam Larson ESU3, SDA
Cecilia Wilken, ESU3, SDA
Jenny Hellbusch, ESU3, SDA
Jen Johnson, ESU3, SDA
Janet Foss, ESU3, SDA
*Violet Glasshoff, ESU3, SDA
Claudine Kennicutt, ESU 10
Kellen Conroy, ESU 1, SDA
Deidre Amundsen, ESU 13
Crystal Ernst ESU 2
Derek Lahm, ESU 1, SDA
Amy Mundil, ESU 1, SDA
Sarah Essay, ESU 10
Amber Vlasnik, ESU 6, SDA
*Erin Trursty, ESU 4
*Shanna Gannon, ESU 10
April Kelley, ESU 6, SDA
*Erin Meyers, ESU 1
Sara Calvert, ESU 15, SDA
Dave Griess, ESU 13, SDA
Katrina Gotschall ESU8
Caryn Zietlow, ESU 2, SDA
Julie Downing, ESU13/SEED
Stephanie Smith, ESU 13
Andrew Easton, ESUCC
Angie Dickey, ESU 15, SDA
Brooke Kavan, ESU 7
Kelli Gibson, ESU 17, SDA
Jennifer Davis, ESU 1, SDA & TLT

Inclusion Activity:

"This or That" – PD Edition

1 finger if you are "this" (first option), 2 fingers if you are "that" (second option)

Schultz
Steinbrink

-  Exit ticket or sticky note on the door?
-  Facilitate a session or attend one with snacks?
-  Working lunch or leave-the-building lunch?
-  Digital handout or printed packet (with color tabs)?
-  Bitmoji slide deck or clean and classic?
-  Icebreaker game or jump straight in?
-  Build the slide deck or build the spreadsheet?
-  Whole group share-out or "popcorn" style?
-  Dessert first or save it for after the session?

Learning Together Discussion: **We Got The CLSD Grant....Now What?**

Breakout Discussion

*Small groups respond to 2–3 prompts. Please assign someone to record your responses in this shared notecatcher. Be sure to include your **Breakout Room Number** when you enter your notes.*

1. How is your ESU using CLSD funds (or other literacy funds)?

What priorities are emerging?

Room 1:

- ESU15: Early Childhood, Science of Reading K–12, Admin IPG and Walkthrough
- ESU13: Lit Coach, WORDS, UNO Lit, LETTRS, Walkthroughs
- ESU3: Lit Coach, UNO Course,

Room 4:

- ESU 13 & ESU 10: supporting secondary using TNTP and conducting IPG walkthroughs; supporting elementary using WORDS & LETRS
-

2. What vendors, consultants, or resources are you using?

What's been helpful so far? Any you would not recommend?

Room 6: LETRS, Solution Tree, UnboundEd, UNO Literacy, Instruction Partners

**Room 3 – Asking about implementation data in relation to use of the resource
LETRS**

AIM Pathways

Ready Rosie

3. How are you thinking about measuring impact across your initiatives?

Are you using existing tools or creating new systems?

- Room 1: How will we organize data to make decisions.(LCNA–pre assessment and then after training LCNA post). Somewhat perceptual data..
- Idea...using Concerns–Based Adoption Model (CBAM)
 - i. Creating statements that reflect effective practice and asking for self–reflection pre/post about their understanding and familiarity with the effective practice
- Room 5: IPG is one part of measuring impact, but what other key data points need to be considered to get a full measure of impact?
- Room 6: IPG? Need to know more about what that looks like
- Room 3: Coaching & Walkthroughs, possibly TNTP IPG or NE IPG?? depending on grade, student outcomes–IPG–metrics of completing adequate training–curriculum resources

4. What challenges or questions have emerged since the award was received?

- How do we add vendors to the approved list? **The Approved Vendor List for the CLSD grant targets Professional Learning and Material Implementation, but if you have further questions about allowable vendors, please reach out to jamie.cook@nebraska.gov.** How do vendors get started seeking approval for work? **This work was done through a Request for Information (RFI). It has since closed, but Jamie may be open to further conversations. (Not out asking! :))** How quick is the turnaround for this, because we have work we want to start in October with a vendor that isn't yet on the list. The vendors we want to use would be for PL & Materials Implementation, but they are not on the list yet. **Reach out to Jamie for further consideration! Vendors had an opportunity to submit an RFI. From there, a team evaluated products based on the PL Rubric.**
- Room 1:
 - IPG questions, where, when, how?
 - Vendor questions as well.
- How are you organizing your consortium grants
- How do we involve leaders and be mindful of their time out of their buildings

5. What systems or supports are you putting in place to make the work sustainable?

Room 5: How do we navigate the vendor landscape? Could be good to share conversations about best vendors to work with and recommendations on selecting.

Room1: Going slow to go fast. Get our Admin going in the right direction so when the work starts with teachers, the admin are on board.

6. Even if your ESU did not receive CLSD funding, how are you supporting literacy this year?

Last 15 minutes: Mentees (led by Heidi/Mackenzie)

Logistics & Reminders

- [SDA Site](#)
- [2025-26 Important Dates](#)
- SDA Needs Assessment (*Coming to your inbox!*)
- Remember to [register](#) for our September SDA Business Meeting!
- [November Training](#) – Teacher Credibility and Collective Efficacy–[registration link](#)
- Next SDA Connect: October 14