

Thank you for purchasing the Scangauge II Steering Column Cover Mount by 100_fab!

Tools:

- Small phillips
- Isopropyl alcohol
- Rag

1. Remove the four screws on the back of the Scangauge II with small phillips circled in red. Don't lose them! You'll need them later on! (see *Figure 1*)



Figure 1. Back of Scangauge II, screws location

2. Carefully remove the back plate.
3. Ensure the tabs from the front cover are seated in the PCB (see *Figure 2*) and the white control buttons are extruded out of the holes

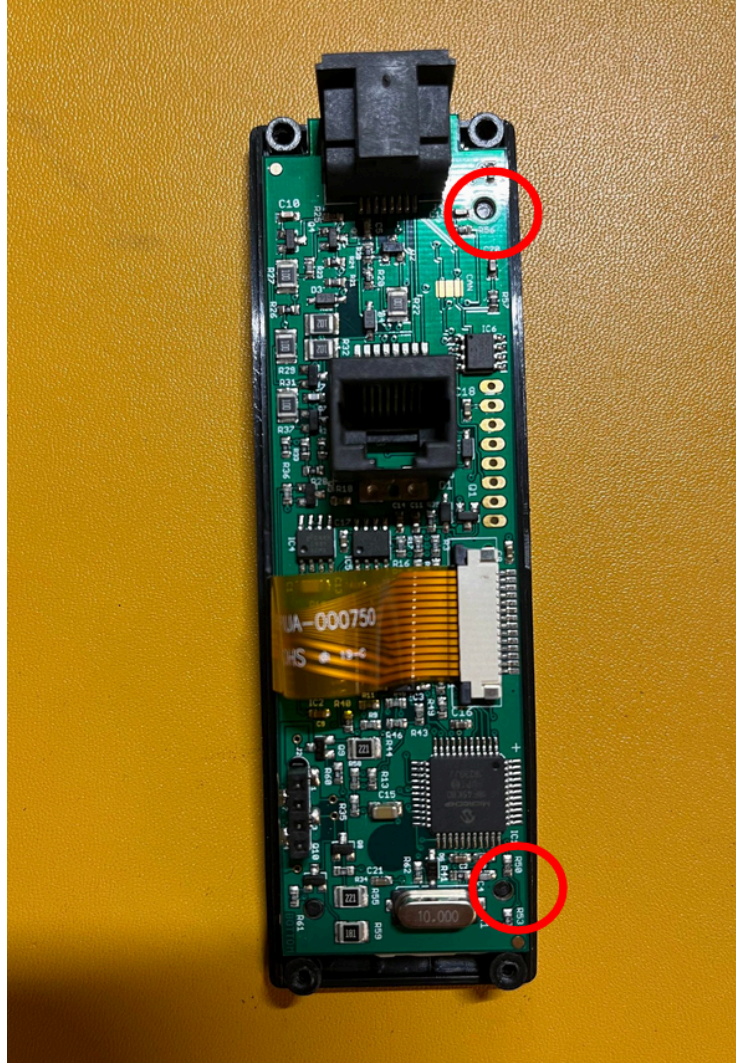


Figure 2. Tabs seated in the PCB

4. Replace the back cover with the Scangauge II Steering Column Mount. Ensure the orientation of the pcb is orientated correctly! **SIDE** Ethernet port is lining up with the **SIDE** ethernet hole of the Scangauge II steering Column Mount (See *Figure 3A*). Ensure the **TAB** of the front cover (see *Figure 3A*, red arrow) is lined up properly with a notch on the Scangauge II Steering Mount Column (See *Figure 3B*).

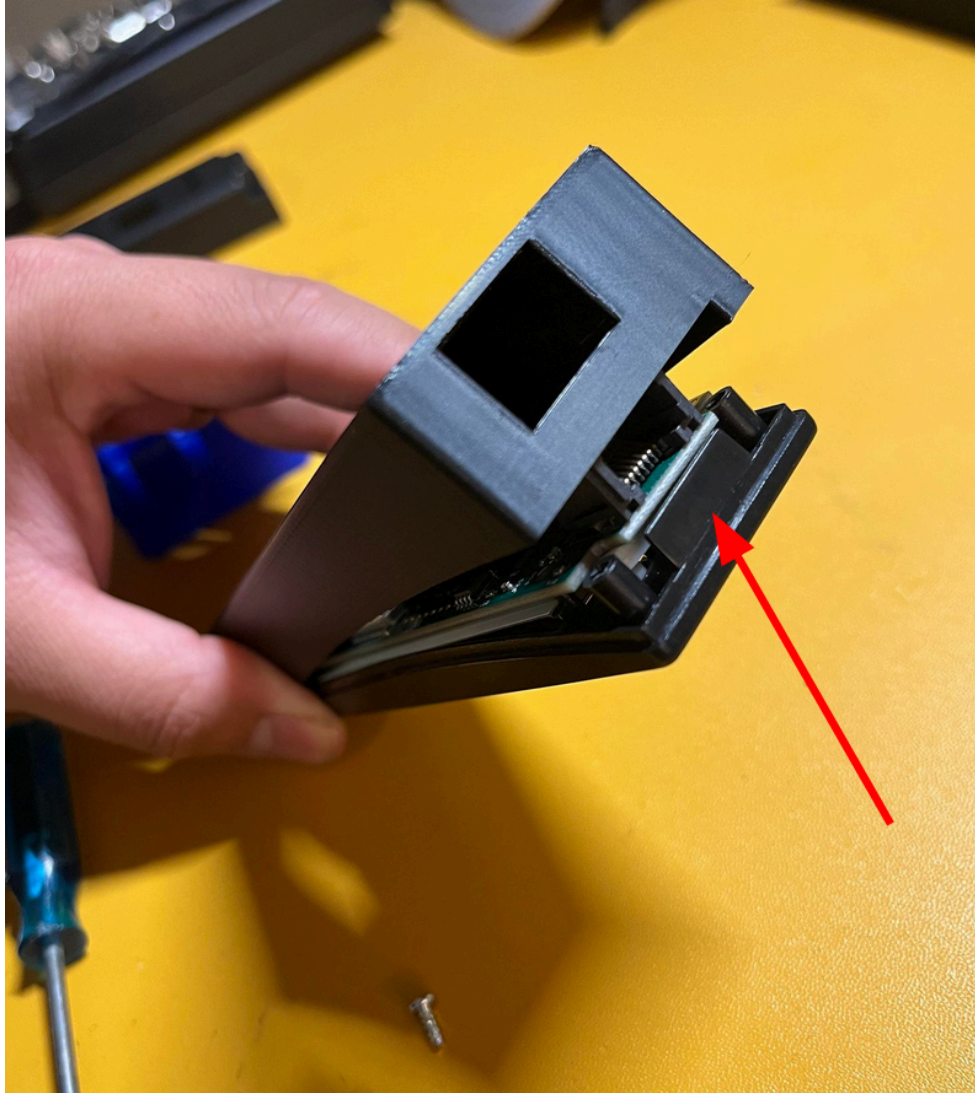


Figure 3A. Red arrow is point to front cover tab

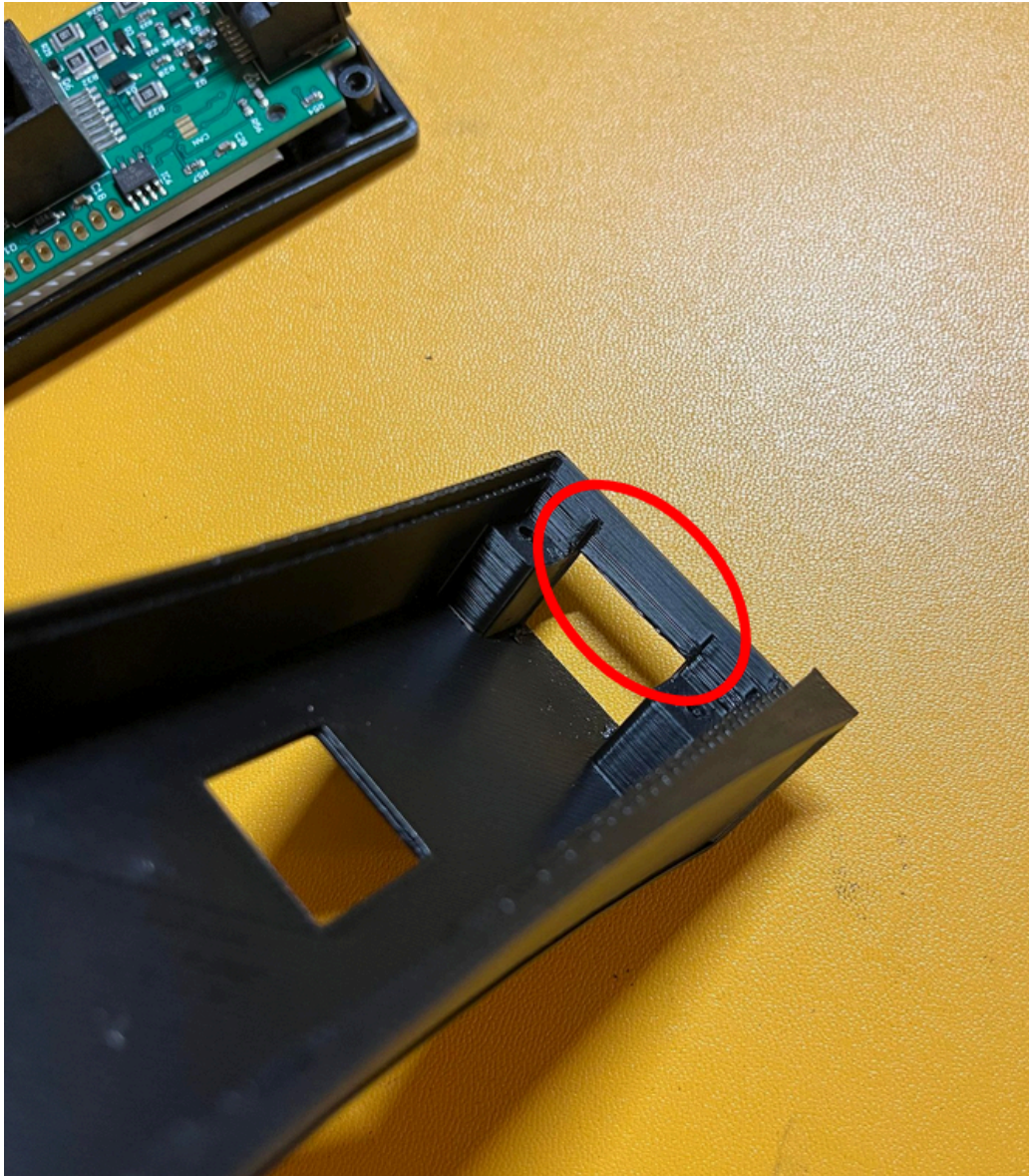


Figure 3B. Notch

5. Snap the back cover together
6. Remember the four screws to save? Re-use them to secure the front cover to Scangauge II Steering Mount Column! Don't hulk it down! **Just finger tight! Be Gentle! Otherwise may strip the plastic threading!**



Figure 4. Four screws

7. Clean surface on Vehicle* steering column cover with isopropyl alcohol with rag or paper towel
8. Dryfit where you'd like to place the re-assembled Scangauge II. When ready, remove the VHB tape protective cover and **FIRMLY** press against the steering column cover
9. Viola! You're done!

* Current list of confirmed vehicles:

- 1995-2004 Tacoma (1st Gen Tacoma)
- 2005-2015 Tacoma (2 and 2.5 Gen Tacoma)
- 2016-2023 Tacoma (3rd Gen Tacoma)
- Lexus GX470
- FJ Cruiser