

1- Introduction

Welcome to the Shadow Entry Strategy Course!

You're about to embark on a journey that will take your trading skills to the next level. This course is designed to equip you with everything you need to master the **Shadow Entry Strategy**, a Smart Money Concepts (SMC)-based approach that will help you refine your entries, minimize risk, and maximize rewards.

Course Structure

The course is divided into three main parts:

- 1 **Introduction (This Part)** - Understanding what you need to succeed, mindset preparation, and what to expect.
- 2 **The Strategy** - The heart of this course! This module will be the longest and most detailed, teaching you how to combine key SMC elements into a structured strategy. We will also cover **risk management, setting Take Profits (TPs) and Stop Losses (SLs), and when to move SL to breakeven.**
- 3 **FAQ + 1-on-1 Mentorship Access** - A space for clarifying doubts and booking a **personal mentorship call** with me for free if you need extra guidance.

What You Will Need

This course does **not** teach individual SMC concepts like Liquidity Sweeps, MSS, FVGs, Order Blocks, or Equilibrium. You are expected to **already understand these concepts** because this strategy builds on them. If you do not have a solid grasp of these fundamentals, you will struggle to apply the Shadow Entry Strategy effectively.

Additionally, **psychology** plays a crucial role in this strategy. Having the right mindset will determine your success more than any technical concept. You need **discipline, patience, and emotional control** to execute this strategy effectively.

Preparing Your Mindset 🧠

Before diving into Module 2, you need to understand one key thing: **success in trading doesn't happen overnight!** ⌚

💡 It will take at least **2-3 weeks** before you start seeing real results. The biggest mistake you can make is expecting instant success. Stay patient, trust the process, and most importantly, follow the rules laid out in Module 2.

📌 **Note-taking is crucial!** I highly recommend that you take detailed notes while studying 2. part. The information there is **dense and powerful**—it might not all click on the first read, so be sure to revisit it **2-3 times** to fully absorb the concepts. The traders who take notes and review the material consistently are the ones who see the biggest breakthroughs. 🚀

Need Help? I've Got You Covered! 💬

I understand that some concepts may be difficult to grasp at first. That's why in **3 part**, you will have the opportunity to book a **1-on-1 mentorship call** with me. If you ever feel stuck, I'll be here to guide you.

Get Ready for the Next Step! 🔥

You now have a clear idea of what this course is about and what's expected from you. In the next part, we will **dive deep into the Shadow Entry Strategy**—how to combine SMC concepts into a structured approach, how to manage risk, and how to optimize your entries and exits.


- Shadow Entry Strategy:

Before diving into the details, take a deep breath and clear your mind. This module is where the magic happens. The strategy you're about to learn is designed to give you a structured, professional approach to trading, but only if you follow it with discipline.

 **Take notes.**


 **Stay focused.**

 **Revisit this part multiple times until every concept is crystal clear.**


This is NOT just another trading strategy—it's a **proven, repeatable system** built around **high-probability setups** and **strict execution rules** to give you a professional trader's mindset. **Let's go!** 

Core Principles of the Strategy

One Trade per Day (Non-Negotiable!)

 The biggest mistake traders make is overtrading. We don't do that here.

 You **only take ONE trade per day**, no exceptions.

 Your job is to find the highest probability setup, execute it, and walk away.

 **Why only one trade?**

- **Quality over quantity:** The best traders take the best setups, not every setup.
- **Psychological control:** The more you trade, the more emotions interfere.
- **Consistency:** This method ensures a structured approach rather than gambling.

 **Commit this rule to memory. ONE TRADE PER DAY. Period.**

2 Pairs to Trade

📌 You will ONLY trade **EUR/USD** or **GBP/USD**, depending on which one presents the first valid setup.

🔄 If EUR/USD presents valid setup first, you trade EUR/USD. 🔄 If GBP/USD presents valid setup first, you trade GBP/USD.

Simple. No distractions. **One trade per day, one pair per day.**

3 Timing: The London Session Killzone

🕒 We only trade within the most volatile and liquid time of the day— **London session open.**

- Our **killzone is 8:00 AM – 9:15 AM GMT.**
 - If a setup forms outside this time window, we ignore it.
 - **Patience is key. If no trade happens in this period, we do not trade for the day.**
-

Step-by-Step Trading Process

Step 1: Identifying the Most Recent High & Low (5 Min TF)

🕒 Exactly at **7:59 AM GMT**, mark the **most recent high and low** on the **5-minute timeframe.**

- **Why?** These levels represent liquidity zones where price is likely to react.
- **If price sweeps one of these levels, we move to Step 2.**
- **If liquidity is NOT swept, we update the high/low with the new most recent high/low.**

Step 2: Liquidity Sweep Confirmation


 Once price **sweeps either the high or low**, we switch to the **1-minute timeframe**.

Step 3: Market Structure Shift (MSS) on the 1-Min TF


 Now we wait for a **Market Structure Shift (MSS)** on the 1-minute chart.

- **MSS confirms a potential reversal.**
- **Once MSS happens, we move to Step 4.**


Step 4: Identifying Order Blocks (OB) and Fair Value Gaps (FVG)


 Now we look for either an **Order Block (OB)** or **Fair Value Gap (FVG)** to enter our trade.


FVG Entry Rules

 The **FVG must be in discount** (Equilibrium level or lower for longs, higher for shorts).

 We **wait for a retracement into the FVG**.

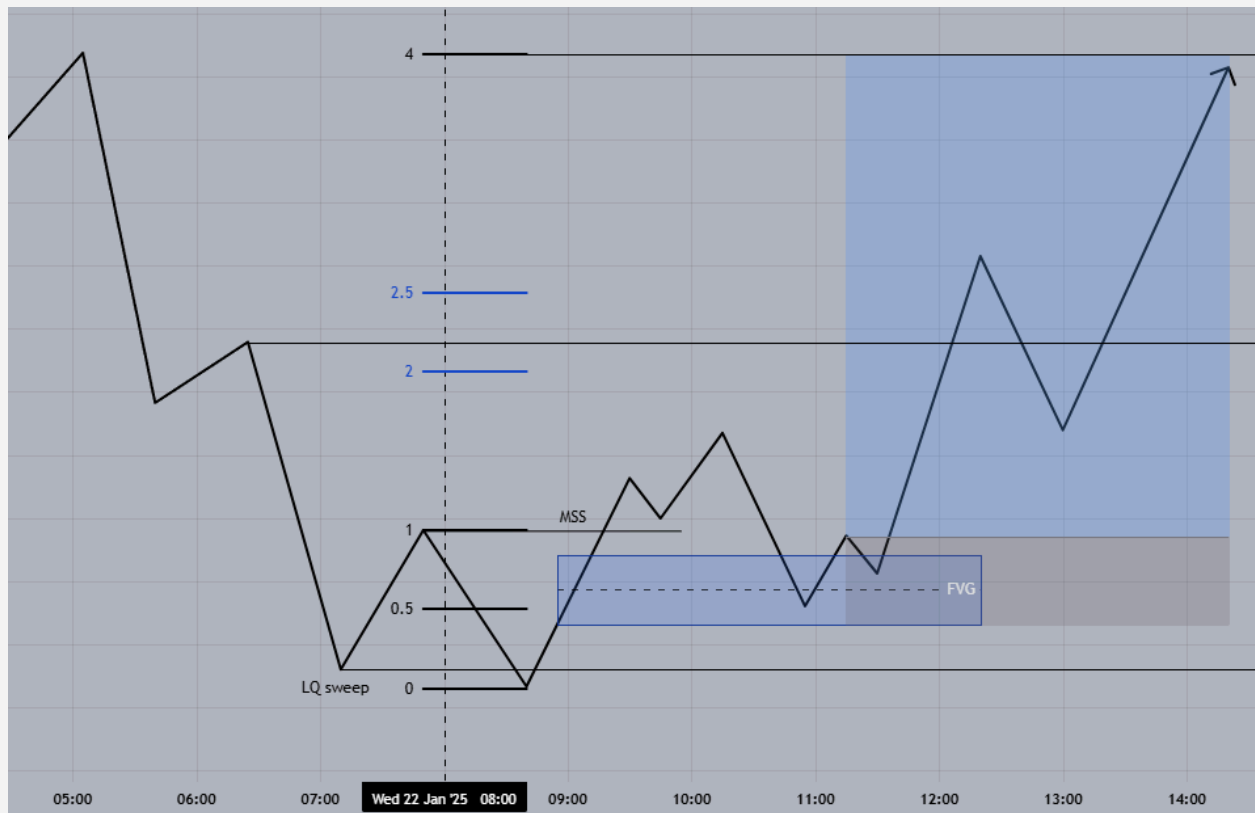
 If price reacts with an **engulfing reaction**, we enter.

 If price fails to retrace, we do NOT force a trade.

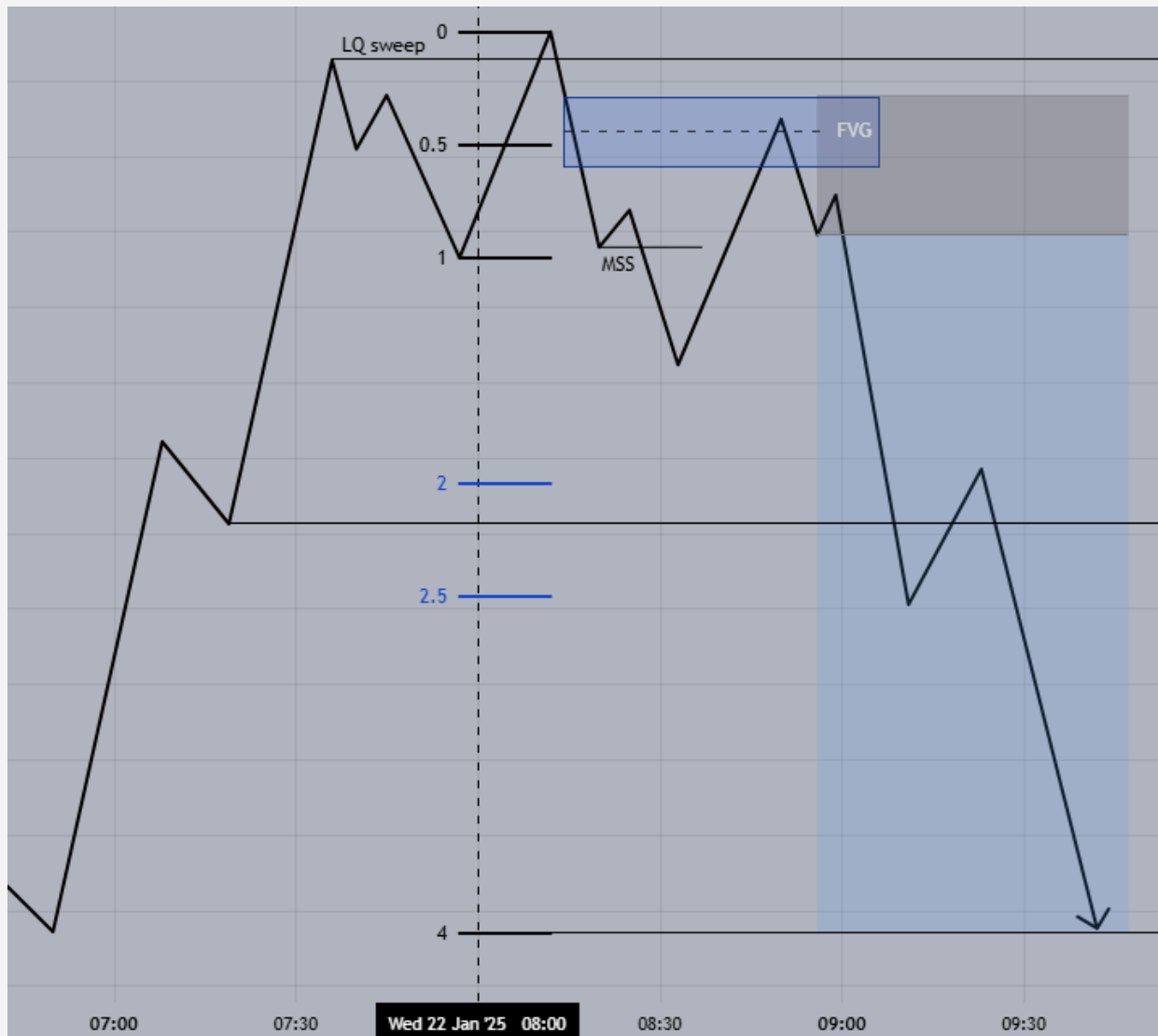
 **Invalidation:** If FVG turns into IFVG, remove it from the chart.

 **Stop Loss Placement for FVG Entry:**

- **Long position:** SL below FVG.



- **Short position:** SL above FVG.

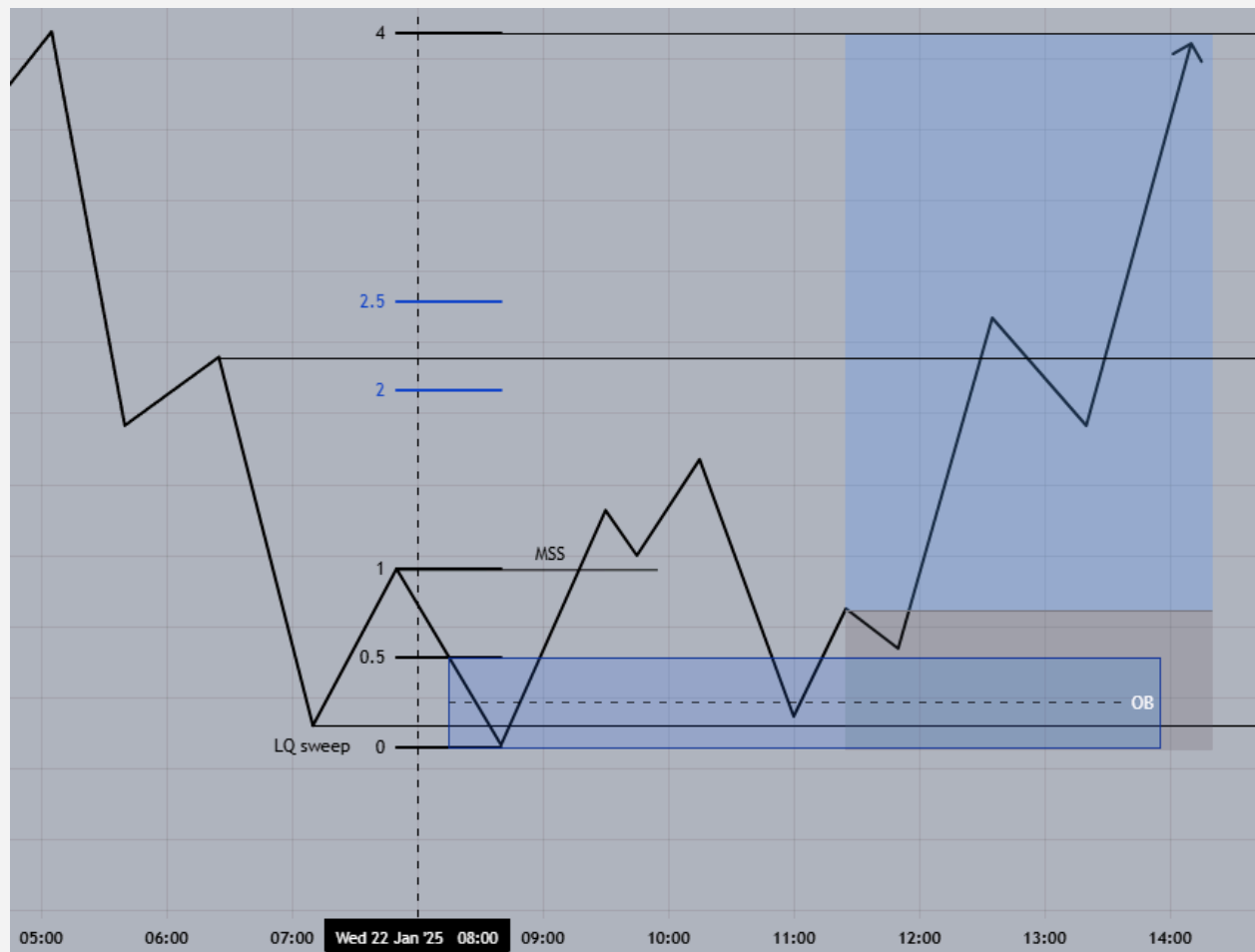


OB Entry Rules

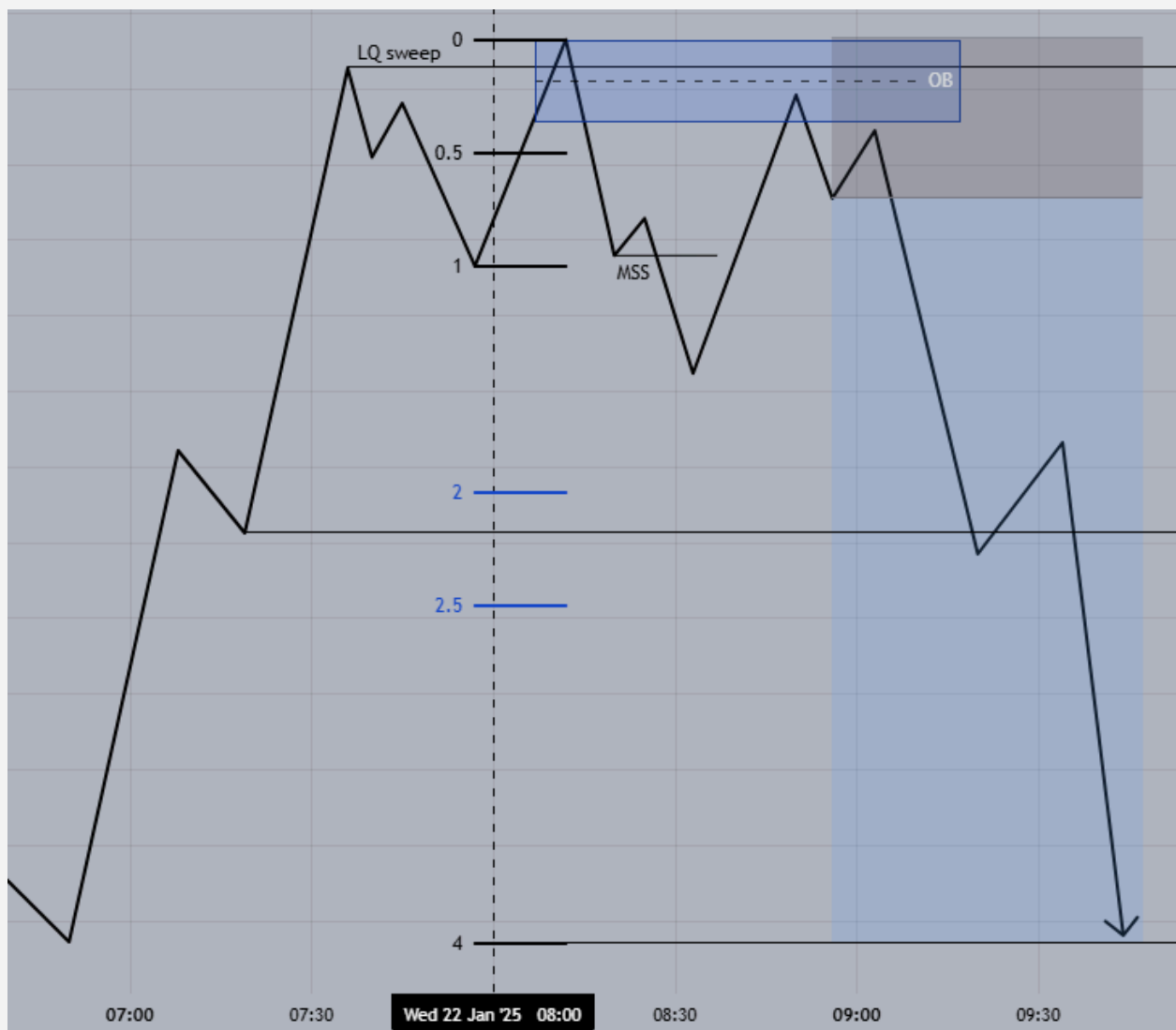
- If price does not react at FVG, we wait for it to **tap the Order Block**.
- If an **engulfing reaction** occurs, we enter.
- If OB is disrespected, wait for MSS again (as liquidity was already swept).
- **Invalidation:** If OB fails and price moves aggressively, consider reducing risk for the day.

● Stop Loss Placement for OB Entry:

- **Long position:** SL below OB.



- **Short position:** SL above OB.



Take Profit (TP) Strategy

🎯 We use **Standard Deviation Projection (SDP)** to determine take profit levels.

📌 TP1 is always above 1:1.5 RR.

📌 If SDP **4-mark** is between 2-3RR, we set **only one TP**.

📌 If SDP **4-mark** is above 3RR, we set **two TPs**:

- **TP1**: Between 2-2.5-mark (preferably at liquidity zones).
- **TP2**: **4-mark on SDP for higher RR**.

Risk Management Rules

📊 **Risking Less on News Days:**

📌 **CPI, NFP, FOMC, Unemployment:** Risk = 1%.

📌 **No major news?** Risk = 1.5%.

📌 **Late entry (after 9 AM GMT)?** Risk = 1%.

💡 **Risk Splitting Strategy:**

We **split our risk** between two positions:

- 📌 **First position:** TP1.
- 📌 **Second position:** TP2.
- 📌 **Once TP1 is hit, SL moves to break-even.**

Final Pro Tips 🧠

✅ **Journal every trade, win or lose.**

✅ **Follow the strategy without deviation.**

✅ **Backtest this strategy for at least one month of past data before going live.**

♦ **What's Next?**

If anything is unclear, don't stress! **The next lesson is a full FAQ on this strategy.**

🚀 **If you still need personalized help, book a 1-on-1 mentorship call with me in the next module!**

🎯 **Write down any questions now, so you don't forget.**

💪 **Read this module again if necessary. Mastery comes from repetition!**

Now go backtest this for a month and start your journey to becoming a consistently profitable trader. Let's get it! 🔥

3 FAQ – Frequently Asked Questions

? Why only 1 trade per day? Doesn't this limit my opportunities?

👉 Taking just one trade per day keeps you focused and helps you avoid overtrading. More trades don't always mean more profits – often, it just leads to more mistakes. Quality over quantity! ✅

? Why did you choose EUR/USD and GBP/USD?

👉 I backtested many pairs with this strategy, and these two performed the best. AUD/USD was also decent, but other pairs had a lower win rate. 📊

? If there's no valid setup in the killzone, should I skip the day or look for another setup?

👉 It's always better to skip the day. No setup = no trade. Simple. 🚫


? If the price doesn't sweep liquidity by 9:15 GMT, does it mean the market is not good for trading?

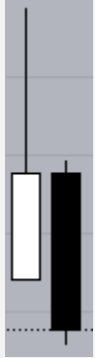
👉 This has never happened to me before, but if there's no valid setup, it's clear that we shouldn't trade that day. 🚫


? What if a MSS happens, but the price doesn't return to OB/FVG immediately – should I still wait?

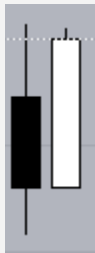
👉 Yes, be patient. Sometimes, it takes 20+ minutes for the price to return to a valid OB or FVG. ⌚

? What does a proper engulfing reaction look like? Which candles are valid?


👉 If we want to short: 



👉 If we want to long: 




? How do I mark Equilibrium on the 1 min timeframe?

👉 Measure from the liquidity sweep to the current low/high. Based on that, we decide if we enter from the FVG or not. 


? Why is an engulfing reaction necessary before entry? Isn't a tap into FVG/OB enough?

👉 We want to see confirmation that FVG/OB is working. No reaction = no trade. 

? What if the price moves through the OB but doesn't create a new MSS? Does it mean my analysis was wrong?

👉 No. Some days, the market just doesn't give good setups, and we don't trade. 

? What is SDP (Standard Deviation Projection), and why do we use it for TP?

👉 It's a Fibonacci tool that shows zones where the price might reverse. That's why we take profits in those areas. 

? If SDP mark 4 is below 3RR, why use only one TP instead of two?

👉 Because we don't know where to place the second TP. Simple as that. 🧑

? Why always move SL to BE after TP1?

👉 I backtested this, and it's the most profitable way to manage risk. 🔄🔒

? How many trades should I expect when backtesting?

👉 Expect around **18-20 trades per month**. 📅
17

? If I have multiple losing days in a row, is it normal, or am I doing something wrong?

👉 It could be a problem with your execution. If you're unsure, send me a message or book a call with me to make sure you're doing everything correctly. ✉️📞

💬 **Need more help?**

- Book 1-on-1 call with me where we can backtest together for 1h and you can ask me any questions about the strategy
- link: [Book a call HERE](#)