

Pangare

nPan or PanPan

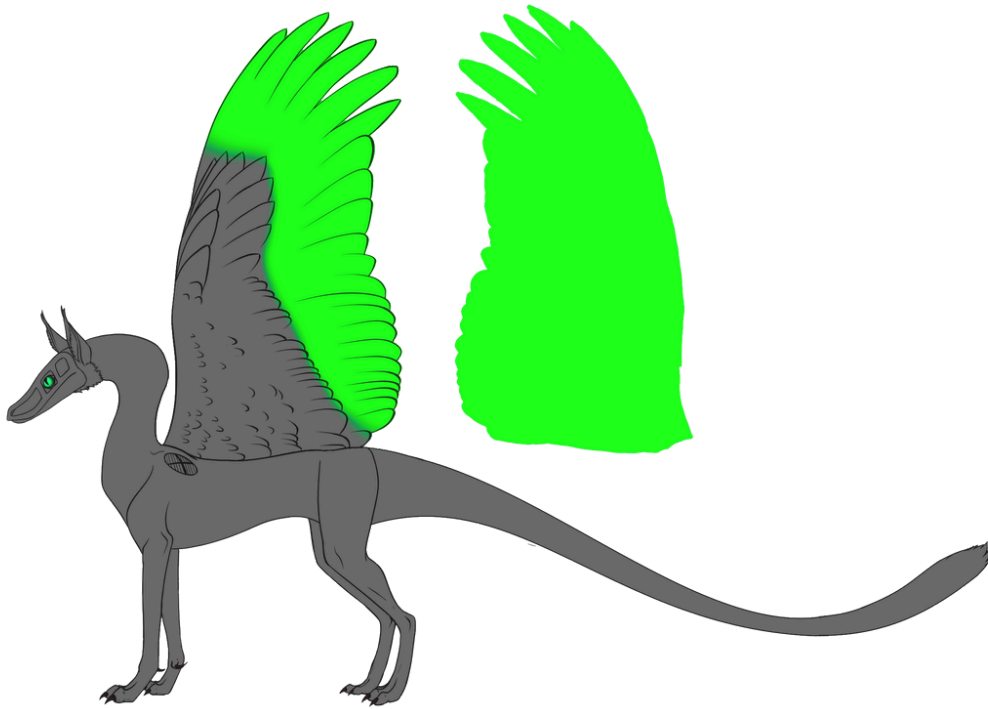
- Pangare only shows on Chocolate and Red bases! It will not show on black bases unless it has the Pangare Modifier Mutation, [Tinted Pangare](#).
- It's always soft edged.
- Pangare is always a tan to soft cream shade or a reddish orange shade on darker bases.
- It always occurs on the underside of the Sindow.

Min to Max:



Max on Wings:

Pangare can show on the whole underside of the wing and onto the top side. It does not have to look soft edged on the top side, as it can go right to the base of the feathers.



Pangare Color and Color Sliders

- You don't have to use these exact sliders and can pick a color that is close. Pangare is always lighter than the base and should never be too desaturated. Typically only a chocolate base Sindow will have the reddish shades, but deeper red shades can have it too.
- These colors are the same for Saturated Sindows as well. They will not be saturated like the base color they belong to.



EXAMPLES:



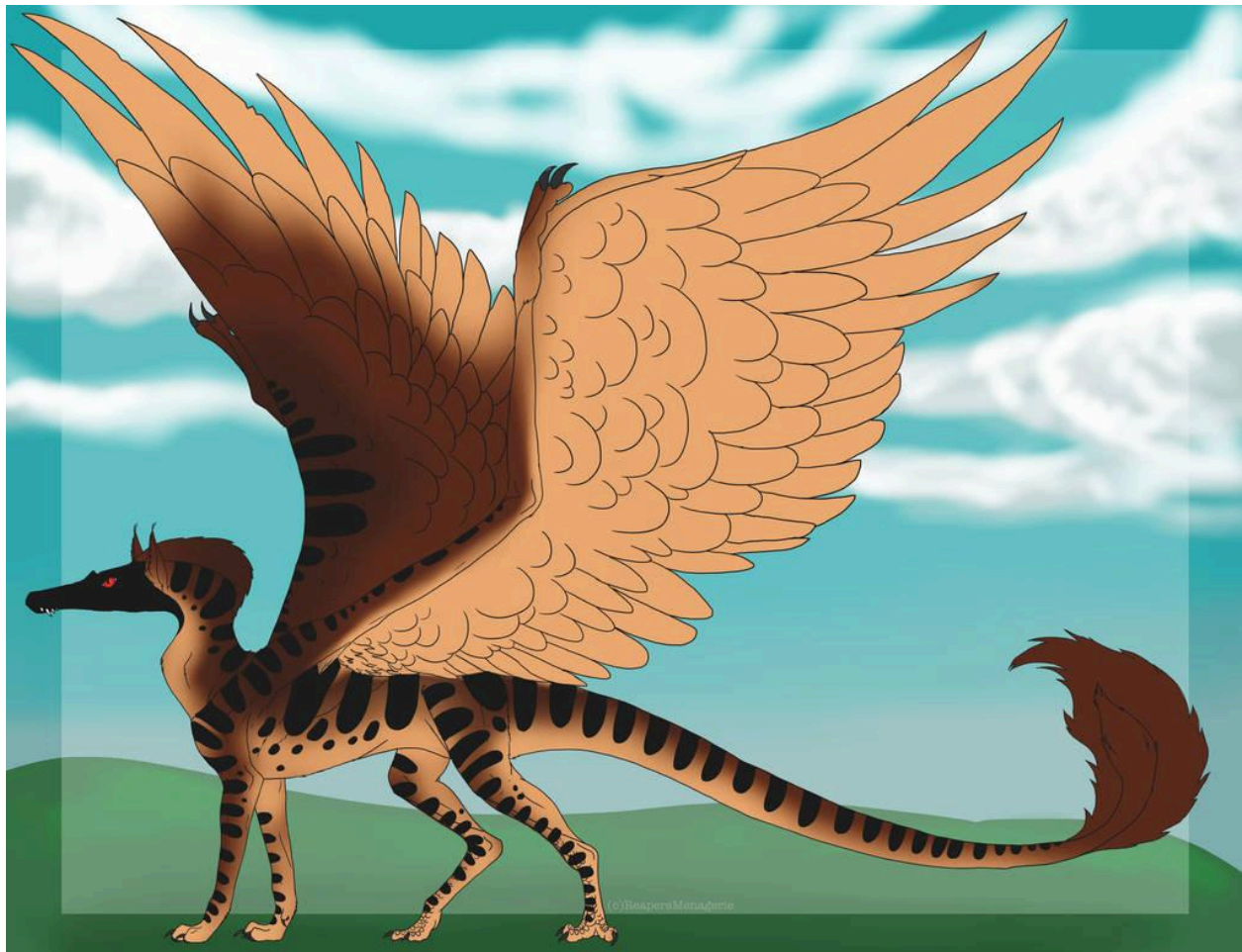
Red Pangare Cheetah



Flaxen Orange Pangare Tiger



Chocolate Pangare Chocho dipped



Sooty Red Pangare with Dragon Scale and Mask



Flaxen Pangare Red