

TITLE

[Title must succinctly describes the contents of the research article and attract the academic readers. The title consists of 8-12 words, not including definite article (the) and indefinite article (a, an). Use the phrases, not sentence.]

Author(s)

[In the submission process (Step 3. Entering the Submission's Metadata), Author(s) must fill out authors' information that consist of author First, Middle and Last Name (if author only uses one name, fill the first name and last name with the same name), Gender, Initial, Username, Password, Affiliation (University / or Institution), E-mail, Mailing Address (complete address of affiliation), Country and Bio Statement. Do not put this information on the submitted manuscript]

Abstract – The abstract is a summary of the article. It is consist of research objective, research methods, finding, and originality. Implications or recommendation can be added in the abstract. The abstract must be written in 200 - 250 words. The abstract must not contain lengthy background information and have no reference to figure, table, equation, any bibliographical reference either coming within or other article. The language of abstract must be clear and concise. It is a stand-alone summary in one paragraph.

Keywords: consist of 3 to 5 important words chosen to reflect the concept of the article and to help access to searches on the Internet

INTRODUCTION

The introduction show what is already known from the previous studies, defines the importance of the study, literature review, and state the research question. In order to understand what is already known from the previous study, the introduction must consist of discussing the relevant journal article (with citation) and summarizing the current understanding of the problem encounter.

METHODS

The methods explain clearly how the author carried out the research. The method must describe the research design clearly, the replicable research procedures, describe how to summarize and analyze the data.

RESULTS AND DISCUSSION

The result section show objectively the presentation of the research key results without any interpretation using text, tables and figures. The result section begins with text, presenting the key finding, and referring to the tables and figures. The table must not print screen, specific numerical values, compare and contrast values, and minimum of 2 row and column. The figures must clear (provide original file as supplementary file in article submission), highlight trends, pattern, and relationship. The result section must present how the author ensure the data validity and reliability

The discussion section show how the author interpret the results in light of what was already known, and to explain the new understanding of the problem after taking your results into consideration. The discussion must connect with the Introduction so it tells how your study contribute to the body of knowledge and society.

Table 1 Student Distribution Frequency

No	Interval	Frequency	%	Category
1.	85 - 100	59	28.36	Very Good
2.	75 - 84	93	44.71	Good
3.	65 - 74	37	17.78	Average
4.	55 - 65	19	09.15	Bad
Total			100.00	

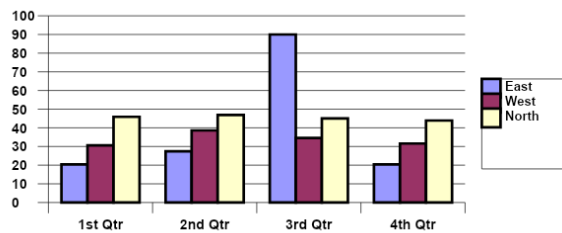


Figure 1 Speed Changing Tool

CONCLUSION

The conclusions section show the answer or clarification of the research questions and opportunities for future research

ACKNOWLEDGEMENT

(if any)

The authors must acknowledge any sources of funding that supported the research and may acknowledge the outside reviewers of their drafts. Please provide after passing the review process.

REFERENCES

The reference must consist of 80% from relevant and recent primary sources (such as article of journal or conference from last 5 years). The reference must be written in APA style and using reference manager software (Mendeley, Zotero, etc) and put minimal 15 references.

Bradburn, N., Sundman, S., & Wansink, B. (2014). *Asking questions: The definitive guide to questionnaire design*. San Fransisco: Jossey-Bass.

Simbolon, M. (2012). Perilaku bullying pada mahasiswa berasrama. *Jurnal Psikologi*, 39(2), 233-243.