

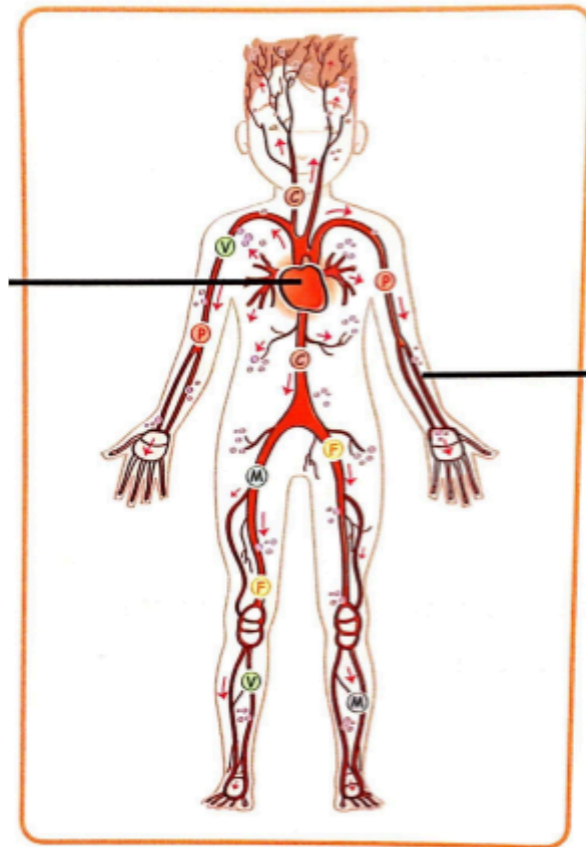
BOOKLET 7: BODY SYSTEMS

NAME: _____ CLASS: _____

1) THE CIRCULATORY SYSTEM

HEART:

IT IS THE MUSCLE THAT PUMPS BLOOD TO EVERY PART OF THE BODY.



BLOOD VESSELS:

THEY ARE THE TUBES WHERE THE BLOOD TRAVELS.

2) ANSWER THIS QUESTION: WHAT IS THE BLOOD?

IT IS A RED LIQUID THAT TRAVELS AROUND THE BODY.

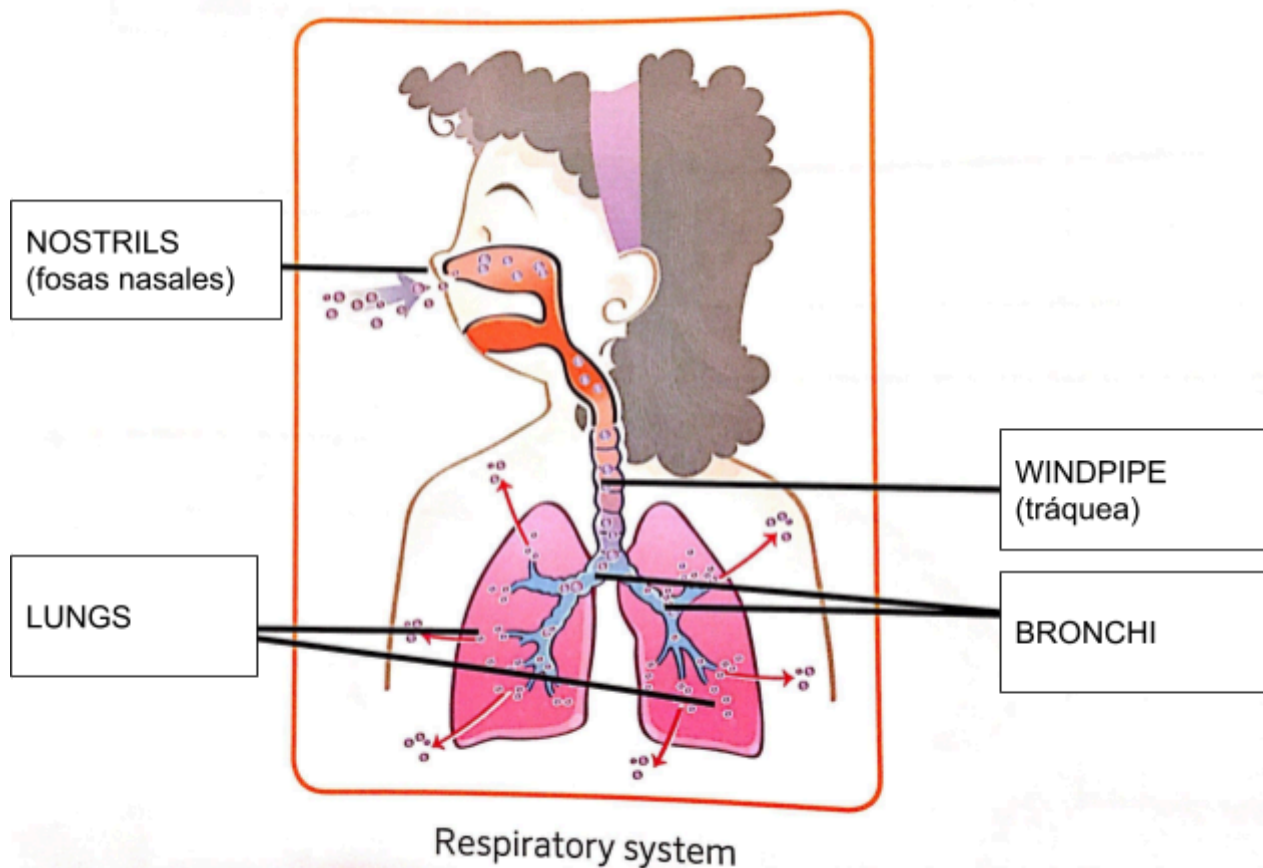
3) WHAT IS IT?

It pumps blood.	HEART
They are tubes where the blood travels.	BLOOD VESSELS (vasos sanguíneos)
It is a red liquid that travels around the body.	BLOOD
What is the system of the blood, heart and vessels?	CIRCULATORY SYSTEM

4) WRITE TRUE OR FALSE:

Every time the heart beats is a pulse:	TRUE
The blood takes oxygen to the muscles.	TRUE
If you run, the heart pumps faster.	TRUE

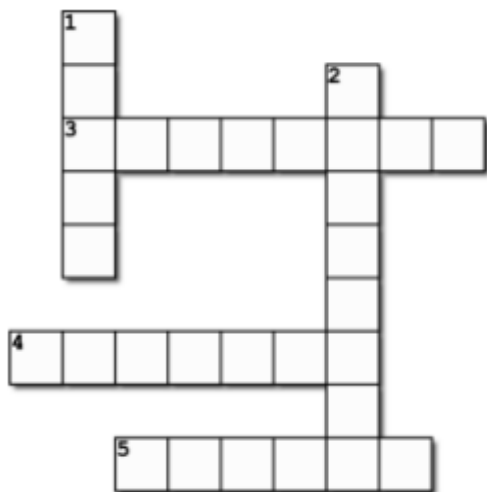
5) COMPLETE THE NAMES OF THE PARTS OF THE RESPIRATORY SYSTEM



6) WHAT IS IT?

What are the holes in the nose?	NOSTRILS
The air goes into these two sacks.	LUNGS
It is a tube that divides into two smaller tubes.	WINDPIPE
They are tubes where the air goes down.	BRONCHI

7) COMPLETE



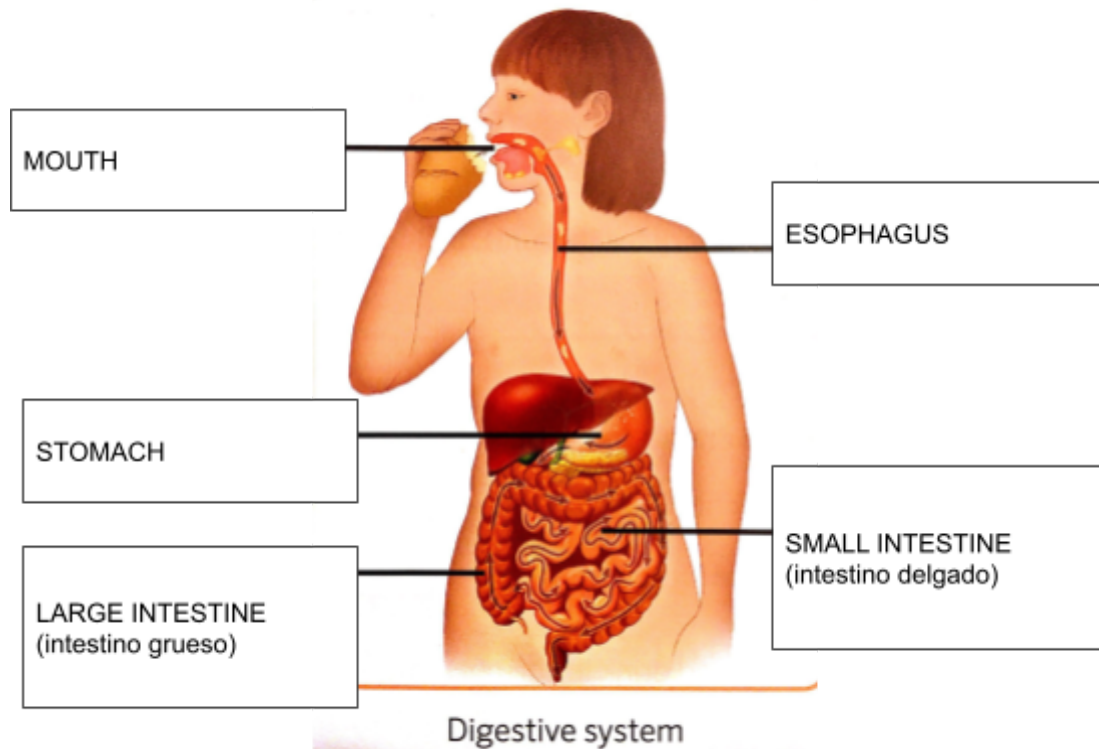
Horizontal

3. They are the holes of the nose.
4. The air goes to the lungs through the
5. It is the air that goes to the muscles.

Vertical

1. They are sacks of air
2. It is the tube that divides into the bronchi.


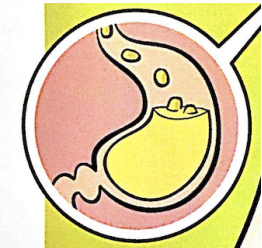

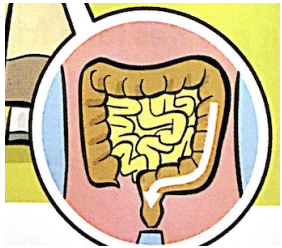
8) THE DIGESTIVE SYSTEM: WRITE THE NAMES OF THE PARTS



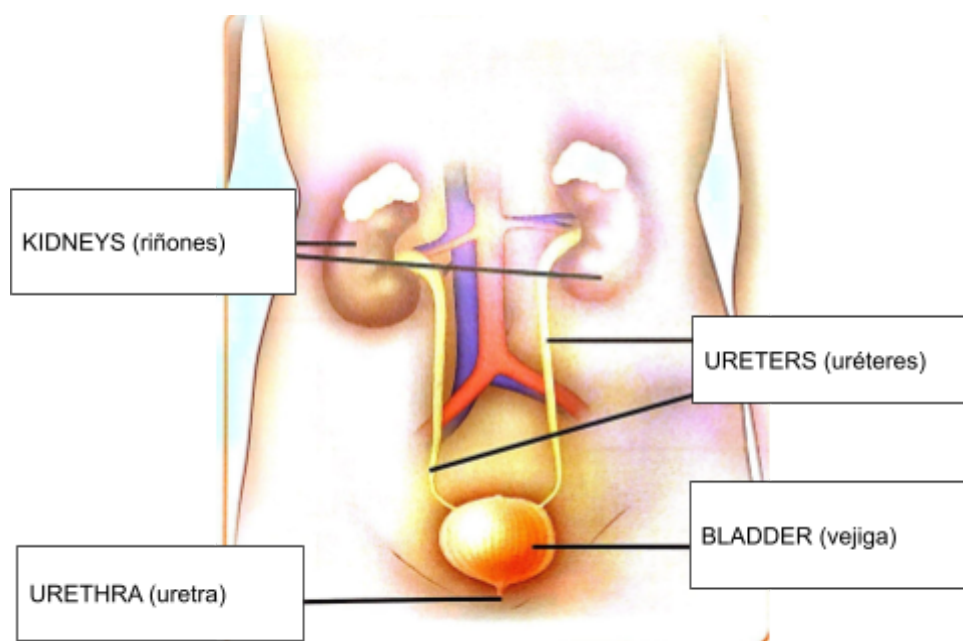
9) WRITE THE PART OF THE DIGESTIVE SYSTEM THAT...

MOUTH	Has teeth that break the food into small pieces.
ESOPHAGUS	Is a long tube where food goes down to the stomach.
STOMACH	Is like a bag where the gastric juices break the food.
SMALL INTESTINE	Is a very long tube with blood vessels. Here the nutrients pass to the blood.
LARGE INTESTINE	Is a wide tube connected to the anus. Here comes what our body doesn't need.

10) IN WHAT PART OF THE DIGESTIVE SYSTEM ARE THE...?

SALIVA	GASTRIC JUICES	BLOOD VESSELS	ANUS
MOUTH	STOMACH	SMALL INTESTINE	LARGE INTESTINE
			

11) WRITE THE PARTS OF THE EXCRETORY SYSTEM:



12) WRITE THE PART OF THE EXCRETORY SYSTEM

These sacks clean the blood of the excess of water and the waste. They make the urine.	KIDNEYS (RIÑONES)
Tubes that go from the kidneys to the bladder.	URETERS (URÉTERES)
It is a bag that collects urine.	BLADDER (VEJIGA)
It is a short tube where the urine goes to the toilet.	URETHRA (URETRA)

13) HEALTHY HABITS

EAT	Eat fruits and vegetables.	
DRINK	Drink a lot of water.	
BREATHE	Breathe clean oxygen.	
REST	Sleep 8 or 9 hours a day.	
EXERCISE	Run or do exercise every day.	
HYGIENE	Wash your hands before meals. Have a shower every day. Brush your teeth.	
ENJOY	Play with your family and friends.	