



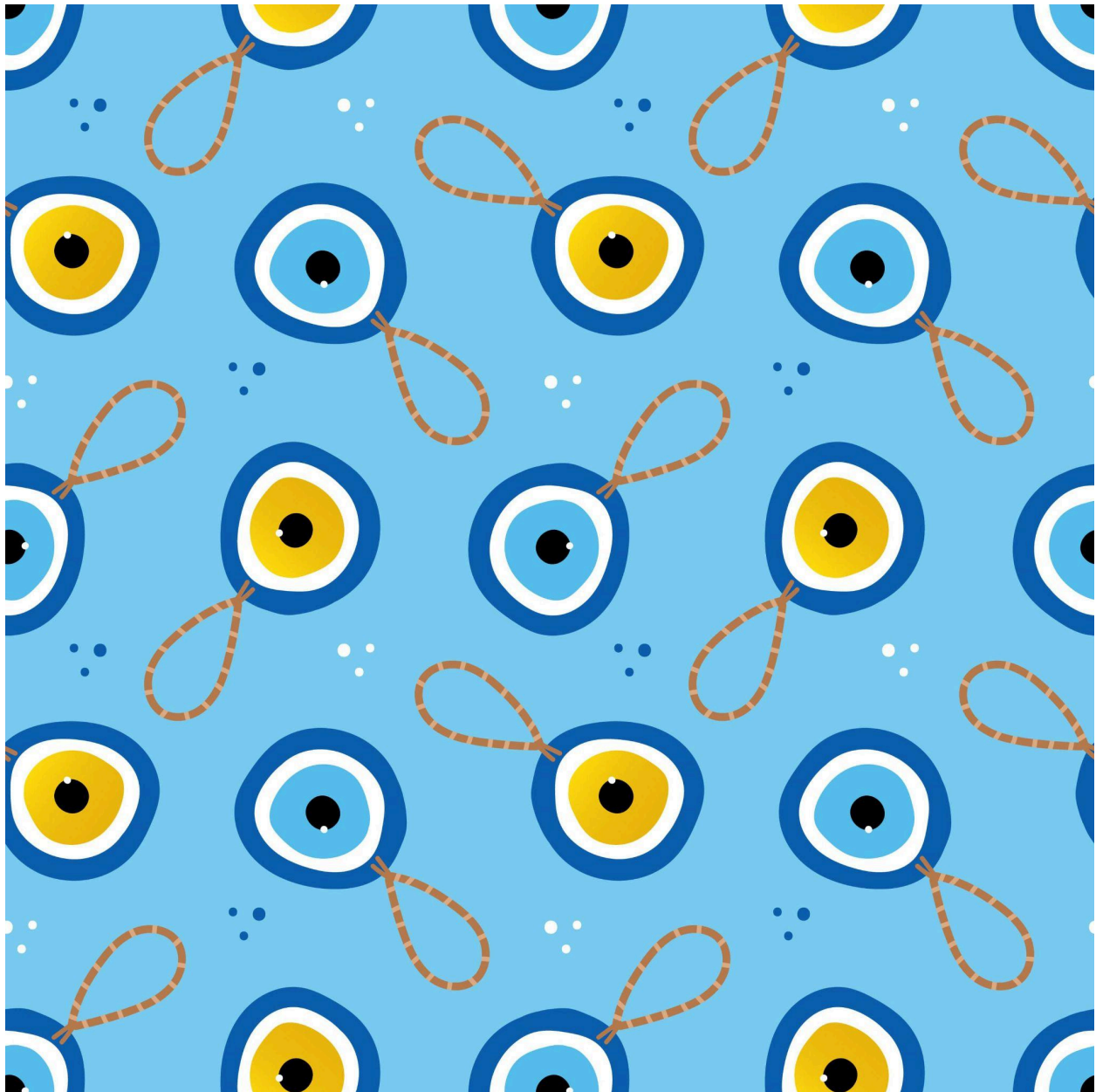
I saw a report which said that 40% of the world's cultures believe in some form of the evil eye. Does that mean the belief in the evil eye is amongst the most popular single beliefs in the world today?

Many weird myths and wonderful traditions exist in this world. One of the most popular ones is the evil eye. 🗨️

It is believed that the curse of the evil eye dates back to 3000 BC in ancient Mesopotamia. The evil eye meaning is also mentioned in ancient Roman and Greek texts, as well as in the Quran and the Bible.

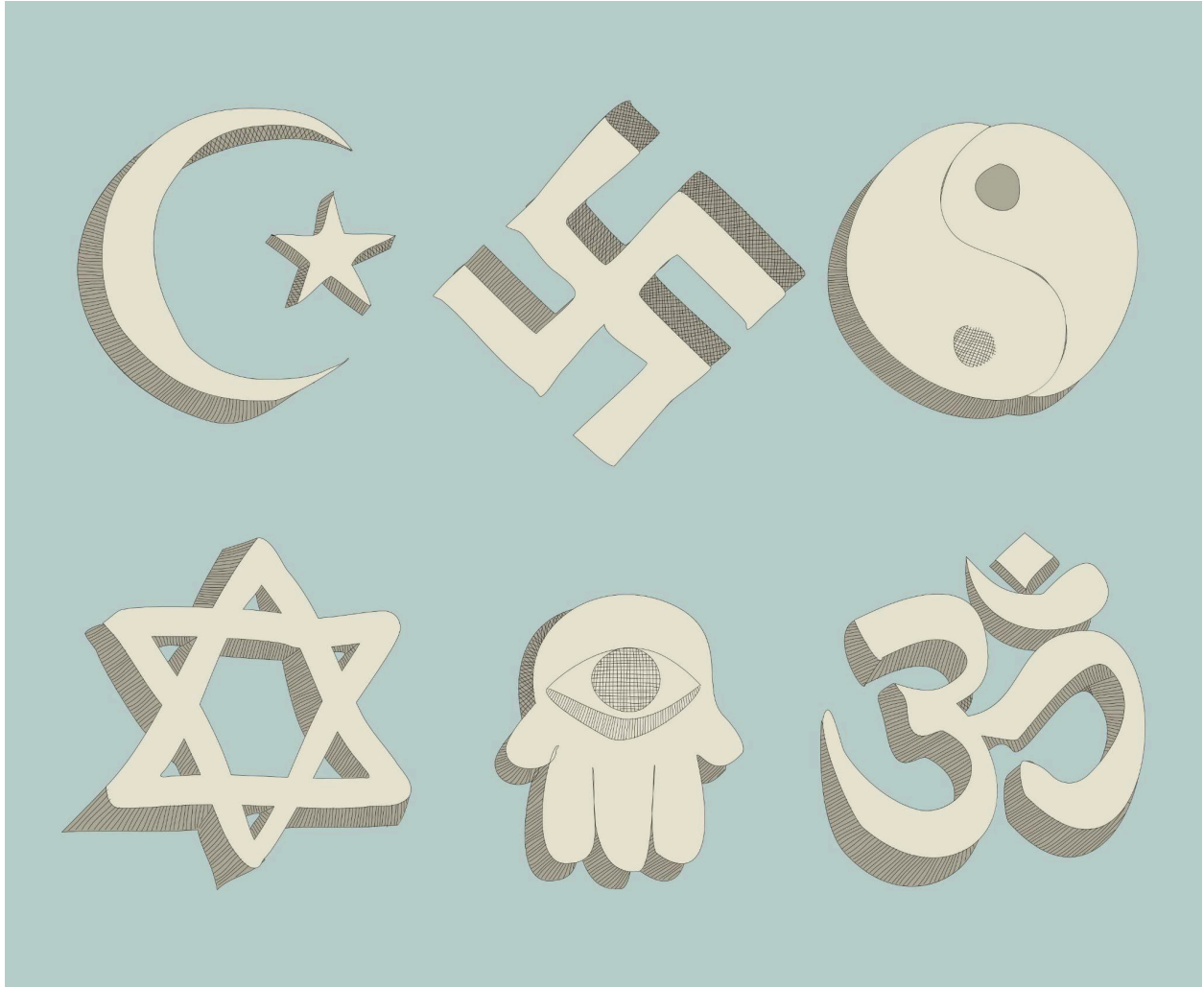
The only two religions believed to be as old as the belief in the evil eye are Hinduism and Judaism, both of which started around 2000 BC.

Incidentally both Hinduism and Judaism, though continents and oceans apart are strong believers in the malefic effects of the evil eye, known as 'Nazar' in modern-day India and 'áyin hā-rá' in modern-day Israel.



[Evil Eye](#), also known as a 'Nazar', is a 'look', 'stare', or 'jealous glare' that is believed to bring bad luck to the person to whom it is directed towards.

Many cultures believe that receiving the evil eye will cause misfortune, suffering, bad luck, or injury. Evil eye talismans and amulets with the symbol of the eye were created to give the wearer protection against the evil eye of bad luck and misfortune.



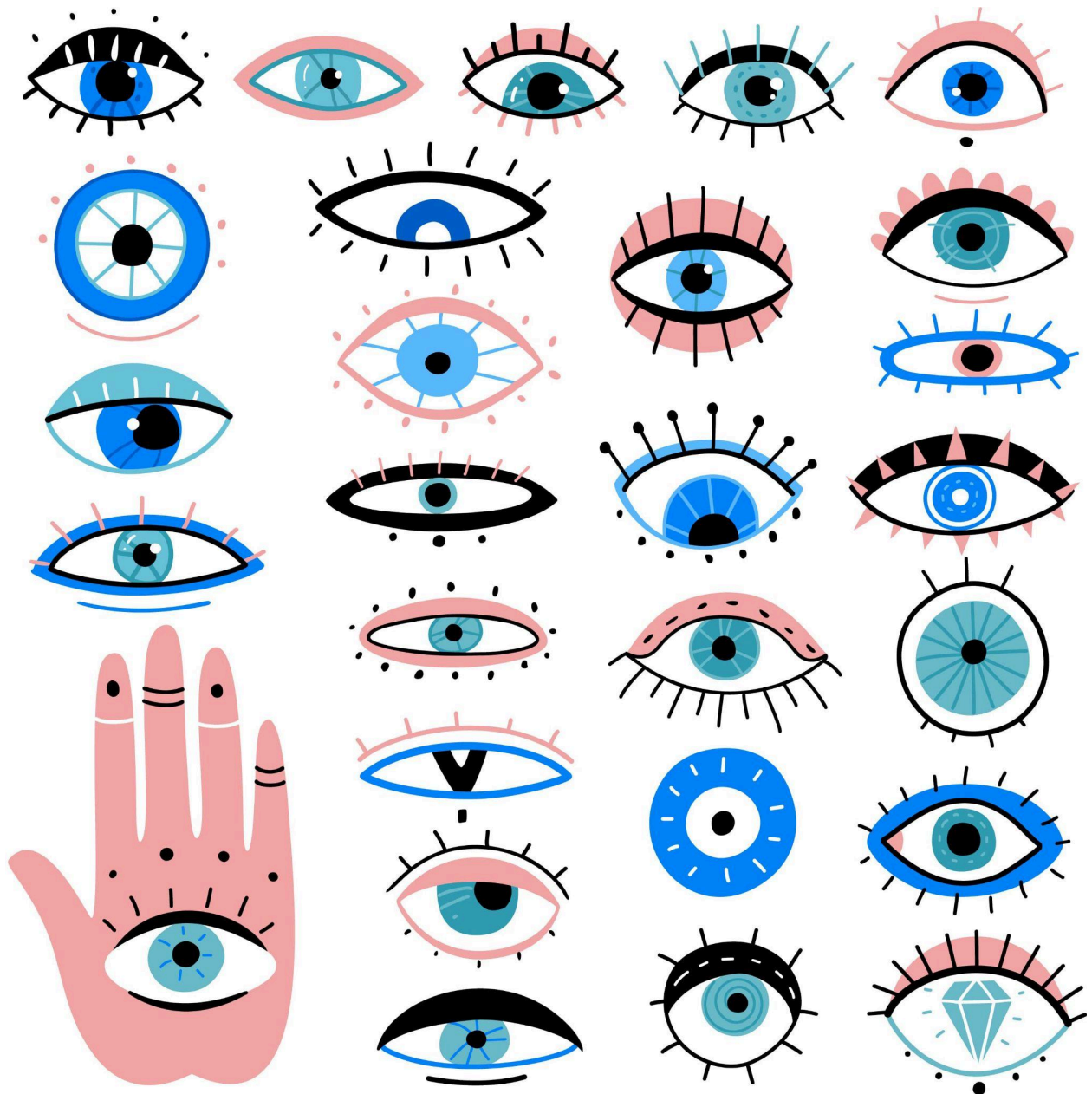
An ancient mystical symbol of protection that is meant to protect the wearer from the 'evil eye'. In Ancient Greece, it was believed that the 'human eyes have the power to release invisible rays of energy that can be potent enough to harm humans or animals.' Evil eye amulets help us deflect this negative energy from affecting us.

Amulets and talismans of the evil eye are also popularly known as "evil eyes" themselves, even though they are created to protect against the evil eye.



It's believed and people say that there are three types of evil eyes. The first is an unconscious evil eye that harms people and things without any intention, the second one intends to harm, while the third one can accidentally be given to ourselves, which is the scariest one for me.

The accidental evil eye can be caused by over-praise and over-adoration, including self-praise and self-adoration, especially if it's more than deserved.



From ancient Egypt, the belief in the evil eye spread to the Mediterranean, Middle East, Europe, and Central America.

It seems that since time immemorial, people who do well and achieve great success in some way attract envy from other people around them who are jealous. The glare given by the envious people can bring misfortune to the receiver, who is usually unaware of the malicious gaze upon them.

Even if it's just for superstitious reasons, the power of the evil eye is still widely believed. There are numerous myths about its origin and various methods of evil eye protection against it found in different cultures, but the general idea of the curse is the same.





The Evil Eye has more than 25 different names in different countries and cultures around the world today!

For example, the Greek evil eye is known as 'mati', the Turkish evil eye is known as 'nazar', in Spanish it is known as 'mal de ojo', the Italian evil eye is called 'malocchio' and many other different names in different countries.



Protection from the evil eye is something that many people desperately want. People wear [evil eye jewelry](#) as a symbol of protection against bad luck. The evil eye symbol is one of the oldest symbols in the world, and you'll likely see the evil eye symbol staring at you wherever you go these days.





In fact you may have also seen the Evil Eye protection symbol in different colors. While the Evil Eye started with the color Blue, over time different [Evil Eye color meanings](#) have emerged.



These include [red evil eye meaning](#) courage, [black evil eye meaning](#) power, [blue evil eye meaning](#) fate and karma protection, [pink evil eye meaning](#) affection, [green evil eye meaning](#) prosperity, [purple evil eye meaning](#) balance, [orange evil eye meaning](#) creativity, [white evil eye meaning](#) positivity and focus, and more.



There are also many unique charms and gestures people use to defend against the evil eye. They come in different shapes and sizes including pendants, charms, necklaces, bracelets, earrings, rings, key chains, car tags, and even [evil eye nail art](#).



It is believed that the evil eye brings the wearer prosperity, protection, and good health. Different cultures have many different ways of protecting against the evil eye, but wearing eye jewelry and evil eye amulets are amongst the most common practices.

Evil Eye Jewelry helps translate negative energies into positive vibes. There was a time when evil eye beads only came in only blue and white glass, but now they also come in fancy sapphires and diamonds.





It is believed that the evil eye brings the wearer prosperity, protection, and good health. Different cultures have many different ways of protecting against the evil eye, but wearing eye jewelry and evil eye amulets are amongst the most common practices.

Evil Eye Jewelry helps translate negative energies into positive vibes. There was a time when evil eye beads only came in only blue and white glass, but now they also come in fancy sapphires and diamonds.

Many popular celebrities have been spotted wearing evil eye protection jewelry. Amongst them is the royal princess Meghan Markle. Even Meghan is a believer in the power of the evil eye. She has often been seen wearing evil eye jewelry, including a [silver evil eye necklace](#) featuring a gem-studded evil eye symbol, to protect her from negative energies.

Other popular Hollywood stars seen wearing evil eye jewelry include Brad Pitt, Madonna, Kim Kardashian, Rhianna, Miley Cyrus, Cameron Diaz, Britney Spears, Lindsay Lohan, Lauren Conrad, Heidi Klum, Marie Kate, Naomi Campbell, Nicole Richie, and Rita Ora.

The popularity of evil eye jewelry is global, with many Bollywood stars also seen wearing them including Katrina Kaif, Priyanka Chopra, and Shilpa Shetty Kundra.







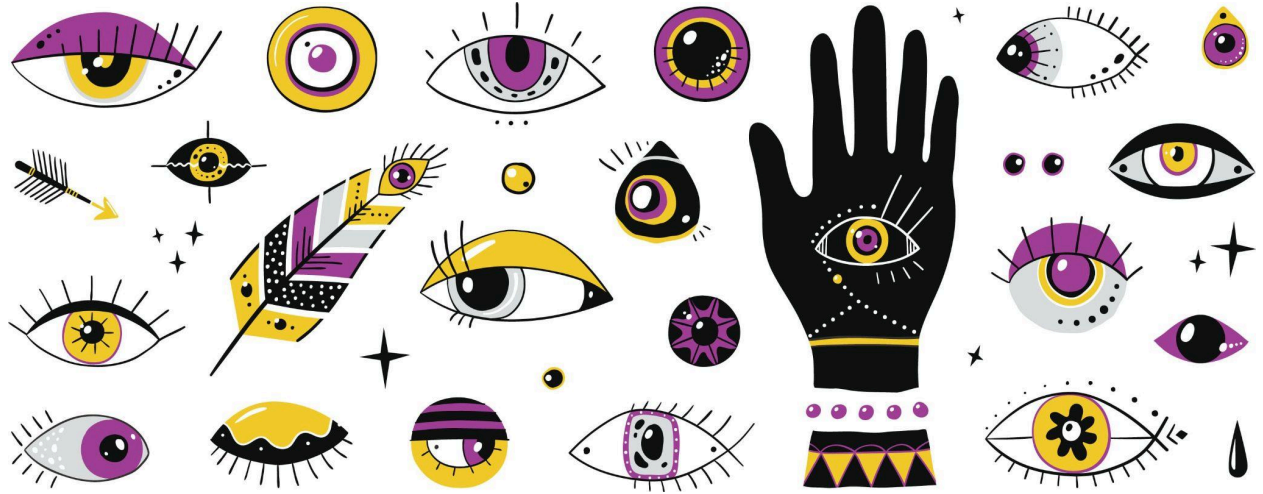
I started wearing evil eye jewelry when I was 19. My friend gifted me my first small [silver evil eye bracelet](#), with a mini [evil eye charm](#) hanging from it. She wanted to make sure that any negative energy directed at me would be turned back and I would be protected and safe.

Since then I've also purchased an [evil eye ring](#), [evil eye earrings](#), [evil eye pendants](#), and an evil eye anklet too. I wear them regularly and have also gifted evil eye keychains and nazar amulets to my family and friends for protection.



In fact, I recently purchased an [Orgone Energy Pyramid](#) for our home. It has an Evil Eye symbol with it and helps convert negative to positive energy at home, while keeping us protected from the evil eye.





Personally, I just love the eye symbol and its shape. For me, the eyes always fascinate and are the most powerful and meaningful part of the human body. Although the evil eye symbol may have cultural and religious roots, as time has passed, the symbol has also become a fashion statement.

Evil eye jewelry can easily be incorporated into everyday life, whether you're attracted to the symbol because of its style, want protection from bad luck, or both!

It can easily be said that the evil eye is a popular evergreen fashion trend in the United States, even though the belief in the evil eye comes from countries and cultures outside of the US.



The Evil Eye can also often be seen with other symbols. The most popular of these is the [Hamsa Hand](#), also known as the 'hand with eye' or 'evil eye hand'.

The Hamsa Hand is a symbol of protection and blessings, and like the evil eye, this hand symbol also transcends modern-day countries, cultures, and religions. It is also known as the Hand of Fatima, the Hand of Miriam, the Hand of Mary, and the Hand of the Goddess.

If that isn't the sign of a divine symbol - I don't know what is!



The Hamsa meaning can change if the hand is facing up or down. If the Hamsa Hand is facing down, the Hamsa hand's meaning is that of good fortune, abundance, and inviting good things into one's life. As a sign of invitation for good luck, the fingers are generally close together to hold all the luck within.





Alternatively, if the Hamsa Hand is facing up, then it is a symbol of protection. It protects the wearer from negative thoughts, as well as negativity or harm from others. You may also see the fingers spread apart when the Hamsa hand is facing up, as a sign of stopping evil.



The Evil Eye can also at times be seen with a lotus flower symbol, a symbol of purity, enlightenment, self-regeneration, and rebirth. The evil eye can also often be seen with fish symbols, as it is claimed that since fish are always underwater and not visible directly to the human eye, they are resistant to the evil eye.

The evil eye can also be seen with the pyramid, which is a symbol of timeless strength, and longevity, as well as with the Eye of Horus, which is an ancient symbol of protection, royal power, and good health.

In fact, many celebrities have also been spotted wearing hamsa jewelry, including Rihanna and Jennifer Aniston. Hamsa hand jewelry includes [hamsa necklace](#), [hamsa bracelet](#), [hamsa pendant](#), [hamsa ring](#), hamsa charm bead, [hamsa earrings](#), and hamsa keychains.

To sum it up, before the alphabet, words, and languages there were symbols. And the Evil Eye and Hamsa hand are both symbols that have been with humanity since inception, and will probably come with us to the moon, mars, and beyond! 🌀





View [Evil Eye Wall Hangings](#)



View [Evil Eye Decor](#) and [Hamsa Decor](#).



