

Corner Reflectors

Installation guide

- STEP 1. Remove the fully assembled antenna from its shipping box and inspect it to ensure no physical damage.
- STEP 2. It is folded and pre-assembled. (See fig. 1.)
- STEP 3. The CR400 may be mounted vertically, horizontally or in a stacked configuration.
- STEP 4. Secure the assembled CR 400 onto the mast with the 2 x V bolts.
- STEP 5. Open the arms and drop them in place. (See fig.2.) (or visit YouTube for more information on the [CR400 installation.](#))
- STEP 6. Make sure all bolts and nuts are secure.

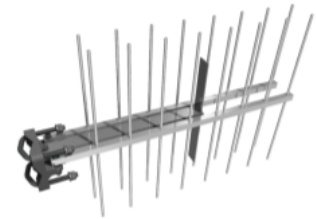


Fig. 1. Prior to installation



Fig. 2. During installation

