

Translate it into an Infographic with the same information. Font style may be different in the infographic.

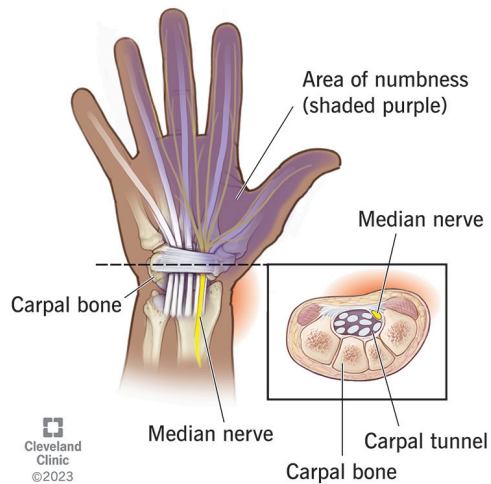
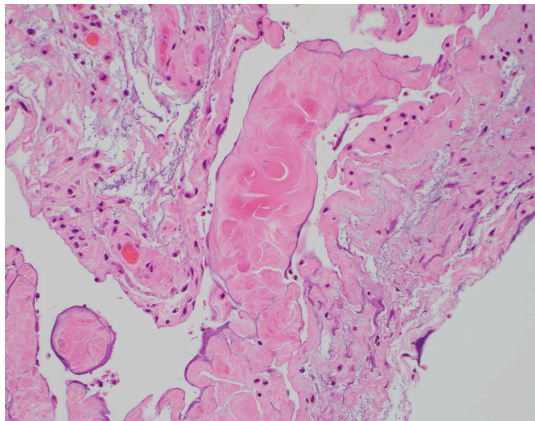
References APA 7th ed.

Deadline: September 11, 2024; 6PM

	Example/ Clinical condition	Brief description of your example
Atrophy	Carpal tunnel syndrome	<i>Carpal tunnel syndrome</i> is a condition that targets nerve function in the hand and wrist. People having this medical condition can feel tingling and numbness in their hands and fingertips. Severe carpal tunnel syndrome can lead to muscle atrophy, emanating from the deteriorating function of nerves and muscles.
Hypertrophy	Gigantomastia	Gigantomastia is a rare and non-cancerous condition that results in the excessive enlargement of a woman's breasts. This enlargement can happen in one or both breasts. Although gigantomastia is deemed a harmless condition, it can lead to physical limitations if left untreated. While in some cases, the condition may subside without intervention, numerous women with gigantomastia will likely require breast reduction surgery or a mastectomy.
Hyperplasia	Nodular Regenerative Hyperplasia	Nodular regenerative hyperplasia (NRH) is an uncommon condition where the liver tissue undergoes a benign change, forming small nodules with minimal fibrosis. NRH is known to contribute to noncirrhotic portal hypertension and has been observed in connection with various rheumatologic, hematologic, and oncologic disorders, as well as immune deficiency conditions and exposure to specific toxins.
Dysplasia	Thanatophoric Dysplasia	Thanatophoric dysplasia is a rare and severe genetic disorder that affects the bone and lung development of a fetus. Due to incomplete lung development before birth, newborns may experience breathing difficulties such as respiratory failure. Most babies with TD are either stillborn or die shortly after birth. Distinctive characteristics

		of thanatophoric dysplasia include an enlarged head and a narrow chest with shortened ribs.
Metaplasia	Gastric Intestinal Metaplasia	Gastric intestinal metaplasia (GIM) is a transitional precancerous condition within the progression from chronic gastritis to gastric cancer. When GIM is linked to a Helicobacter pylori infection, it is categorized as metaplastic atrophic gastritis due to environmental factors. Individuals with GIM may not show any symptoms or may experience different digestive issues.
Anaplasia	Anaplastic Large Cell Lymphoma	Anaplastic large-cell lymphoma (ALCL) is an uncommon type of non-Hodgkin lymphoma and falls under T-cell lymphoma. In non-Hodgkin lymphoma, there is an abnormal proliferation of lymphocytes within the body. ALCL typically accumulates in small glands known as lymph nodes or other organs, such as the lungs or skin.

Carpal tunnel syndrome

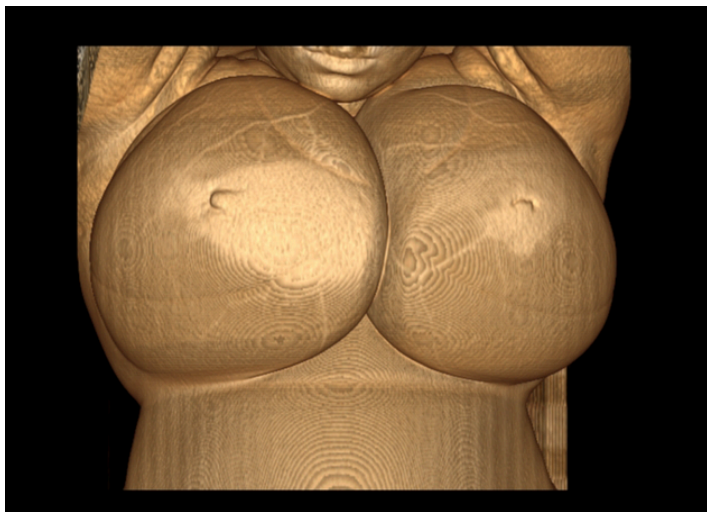
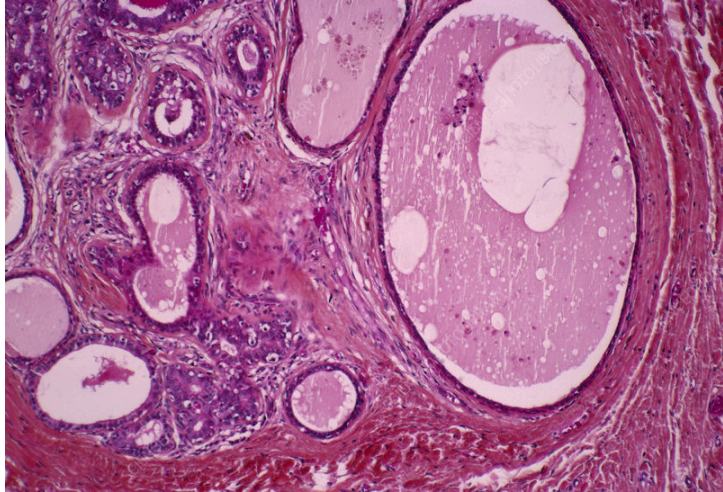


carpal tunnel

syndrome (atrophy)

Link: https://s3.amazonaws.com/production.scholastica/article/32017/large/269_fig_1.jpg?1656404780

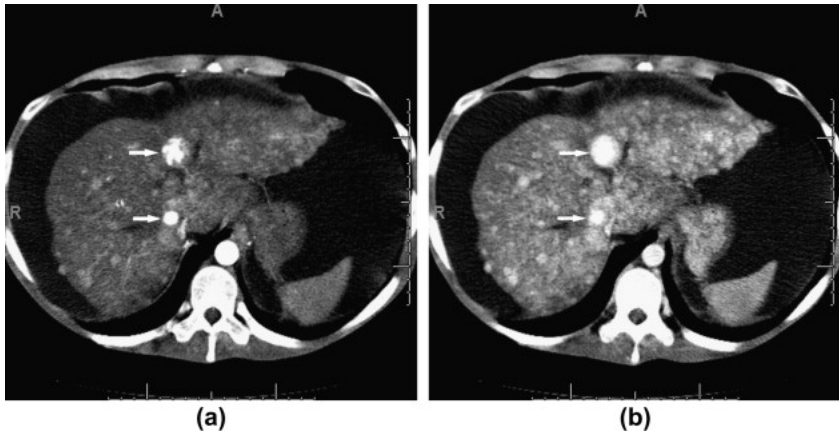
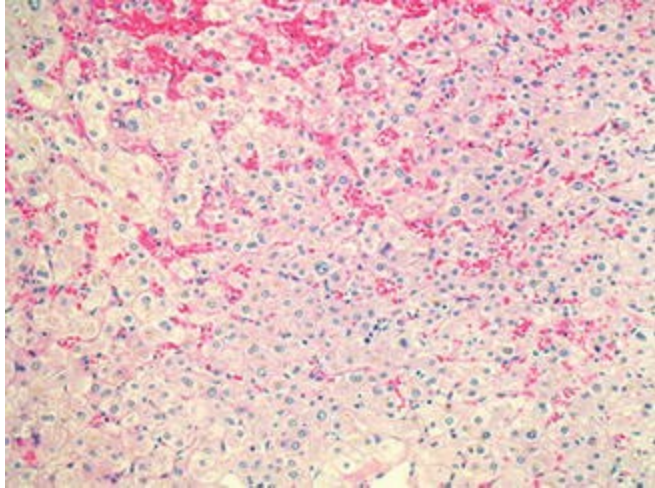
<https://my.clevelandclinic.org/-/scassets/images/org/health/articles/carpal-tunnel-syndrome>



Gigantomastia (hypertrophy)

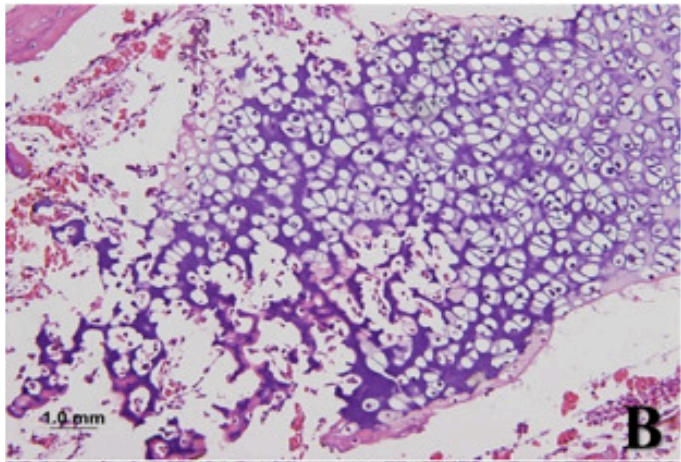
Link: <https://media.sciencephoto.com/m1/22/03/42/m1220342-800px-wm.jpg>

https://prod-images-static.radiopaedia.org/images/62711253/9730e2937bf4835b51110583122101016019e128f7035128defe15eb10de5e71_big_gallery.jpeg



Nodular Regenerative Hyperplasia in Liver (Hyperplasia)

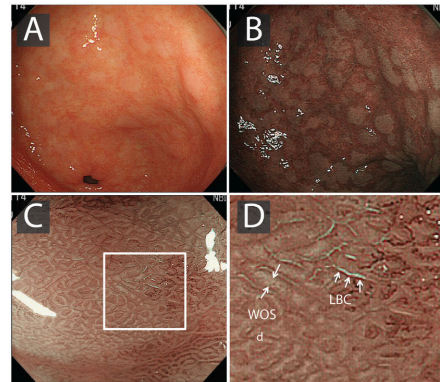
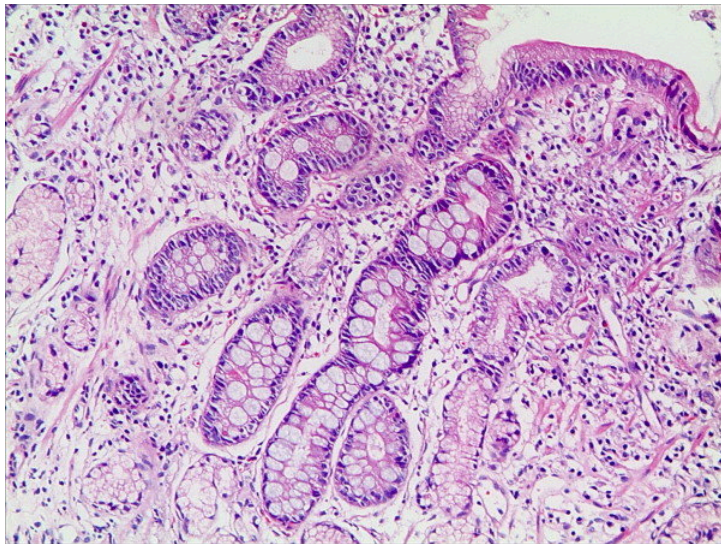
Link:
https://media.springernature.com/lw685/springer-static/image/chp%3A10.1007%2F978-3-319-26587-2_118-1/MediaObjects/304970_0_En_118-1_Fig2_HTML.jpg
<https://ars.els-cdn.com/content/image/1-s2.0-S000992600900292X-gr2.jpg>



Thanatophoric Dysplasia (Dysplasia)

Link: <https://ars.els-cdn.com/content/image/1-s2.0-S0014480016303422-gr3.jpg>

https://media.springernature.com/lw685/springer-static/image/chp%3A10.1007%2F978-1-4614-6430-3_228-2/MediaObjects/271938_0_En_228-2_Fig1_HTML.jpg

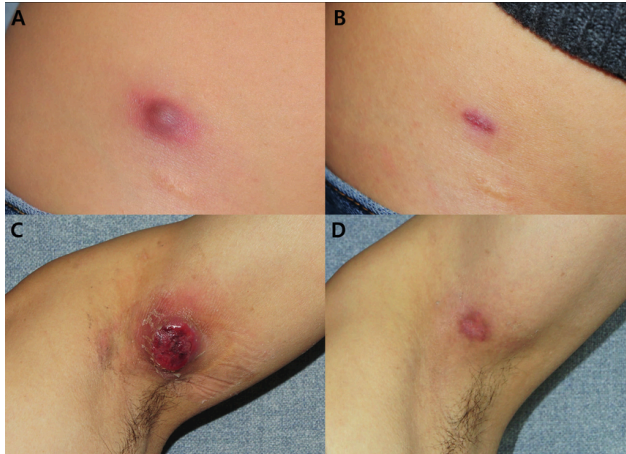
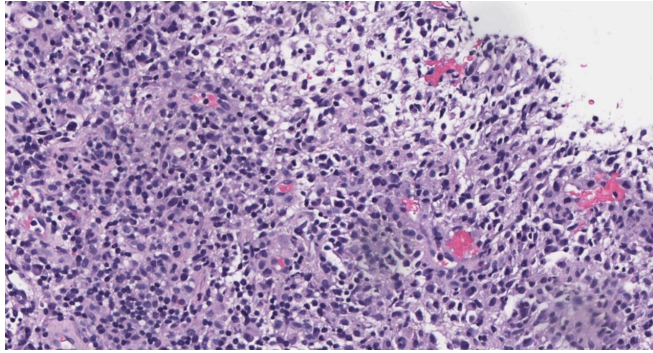


Gastric Intestinal Metaplasia (Metaplasia)

Link:

https://www.researchgate.net/figure/Intestinal-metaplasia-in-the-gastric-mucosa-in-patients-with-bile-reflux-HE-staining_fig2_221790975

<https://www.researchgate.net/publication/325728895/figure/fig2/AS:636895444865027@1528859115386/Endoscopic-findings-of-gastric-intestinal-metaplasia-A-White-light-endoscopy-image.png>



Anaplastic Large Cell Lymphoma (anaplasia)

Link:

https://imping.med.utoronto.ca/LMP25461.htm?utm_campaign=Full&utm_medium=referral&utm_source=dml

<https://www.researchgate.net/publication/338919282/figure/fig1/AS:11431281092528349@1666888689124/Clinical-images-of-primary-cutaneous-anaplastic-large-cell-lymphoma-A-A-solitary.ppm>

Qr of References



REFERENCES

Cleveland Clinic. (2022, August 22). Anaplastic Large Cell Lymphoma: Symptoms, Causes & Treatment. Cleveland Clinic. <https://my.clevelandclinic.org/health/diseases/24029-anaplastic-large-cell-lymphoma>

Cleveland Clinic. (2024, January 3). *Thanatophoric Dysplasia: Symptoms, Causes, Treatment & Outlook*. Cleveland Clinic. <https://my.clevelandclinic.org/health/diseases/thanatophoric-dysplasia>

Defendi, G. L. (2023, February 9). *Thanatophoric Dysplasia: Practice Essentials, Pathophysiology, Epidemiology*. Medscape.com; Medscape. https://emedicine.medscape.com/article/949591-overview?st=fpf&scode=msp&socialSite=google&form=fpf&icd=login_success_gg_match_fpf

Goldblum, J. R. (2003). Barrett's Esophagus and Barrett's-Related Dysplasia. *Modern Pathology*, 16(4), 316–324. <https://doi.org/10.1097/01.mp.0000062996.66432.12>

Jain, P., Patel, S., Simpson, H. N., Richard M. Silver, Lewin, D. N., Campbell, R. C., & Guimaraes, M. (2021). *Nodular Regenerative Hyperplasia of the Liver in Rheumatic Disease: Cases and Review of the Literature - Prarthana Jain, Sagor Patel, Heather N. Simpson, Richard M. Silver, David N. Lewin, Ruth C. Campbell, Marcelo Guimaraes, Katherine C. Silver, 2021*. Journal of Investigative Medicine High Impact Case Reports. <https://journals.sagepub.com/doi/10.1177/23247096211044617?icid=int.sj-full-text.similar-articles.2>

Khazaaleh, S., Alomari, M., Rashid, M. U., Castaneda, D., & Castro, F. J. (2024). Gastric intestinal metaplasia and gastric cancer prevention: Watchful waiting. *Cleveland Clinic Journal of Medicine*, 91(1), 33–39. <https://doi.org/10.3949/ccjm.91a.23015>

Morgan, D. (2024, April 24). *UpToDate*. Uptodate.com. <https://www.uptodate.com/contents/gastric-intestinal-metaplasia>

Watson, S. (2014, May 29). *Anaplastic Large-Cell Lymphoma*. WebMD; WebMD. <https://www.webmd.com/cancer/lymphoma/anaplastic-large-cell-lymphoma>