

Keller High Band Handbook



Policies, Procedures, and Traditions

2024-2025

Keller High School
Keller Independent School District
Keller, Texas

Band information and calendar are available on the band website at:

www.kellerhighband.org

Keller High Band Directors

Daniel Bloss

Head Band Director

Wind Ensemble, Marching Band, & Music Theory

Email: daniel.bloss@kellerisd.net

Office phone: 817-744-1614

Richard Alvarado

Assistant Band Director

Symphonic Band & Concert Band II

Email: richard.alvarado@kellerisd.net

Office phone: 817-744-1610

Connor Koriath

Assistant Band Director

Concert Band I & Applied Music

Email: connor.koriath@kellerisd.net

Office phone: 817-744-1614

Julianna Fletcher

Assistant Band Director

Percussion Director, Keller High Feeder (KHS, KMS, ISMS) & Concert II

Email: julianna.fletcher@kellerisd.net

Office phone: 817-744-1587

Table of Contents

- [Welcome](#)
- [Who We Are](#)
 - [Our Program](#)
 - [Our Bands](#)
- [Communication](#)
 - [Contact Information](#)
 - [Chain of Communication](#)
 - [Ways we communicate](#)
 - [Presto, Website, Calendar, Whiteboard, Social Media](#)
 - [Band App](#)
 - [2024-2025 QR Code List](#)
- [Expectations](#)
 - [General](#)
 - [Behavior](#)
 - [Marching](#)
 - [Physicals](#)
 - [Uniform](#)
 - [Rehearsal Equipment](#)
 - [Band Assignments](#)
 - [Concert](#)
 - [Etiquette](#)
 - [Concert Uniform](#)
 - [Attendance Policy](#)
- [Financials](#)
 - [Fees](#)
 - [Shopping List](#)
 - [Private Lessons](#)
- [THE Glossary: Let's define!](#)

What is What: Camps, Letter Jackets, All-State, and more!

Welcome to Keller High School Band!

We are happy to have you as part of the award-winning Keller High School Band program. Our band is one of the premier programs in the state of Texas, and we look forward to you becoming a member of our band family.

The Keller High School Band program has a long tradition of excellence in shaping students' lives and instilling a rich appreciation for the musical arts. While in band, you will strengthen friendships, gain confidence, and learn the value of teamwork. Our band students also develop strong communication skills, as well as acquire a broader understanding of musical genres, techniques, and theories.

As a student in our band, you will learn the importance of attitude, ability, academics, and accountability and the role they play in your success. This handbook will serve as a guide for you and your family while in the program. Like any successful organization, structure and communication are critical. The policies laid out in the handbook will assist you with questions and expectations.

We are always here to help and assist you whenever needed.

It's going to be a great year in Keller High School Band. Welcome to the family!

Go Big Blue!

Daniel Bloss, KHS Head Band Director

Richard Alvarado, KHS Assistant Band Director

Connor Koriath, KHS Assistant Band Director

Julianna Fletcher, KHS Percussion Director

Who We Are

Our Program

Keller High School is the oldest high school in the Keller Independent School District. At almost 400 strong, the band comprises almost ten percent of the entire student body and includes some of the most academically successful students on campus. Many of our band members are frequently in the top ten percent of their class, National Merit Scholars, or participate in varsity athletics.

Musically, over the last twenty-six years, the Keller High School Band has earned straight first division ratings at the UIL Region Marching Contest. Named a top ten finalist many times at the 6A State Finals, the band has also been the recipient of the prestigious Sudler Shield award by the John Philip Sousa Foundation. Performing in the coldest parade on record, the KHS Band marched in the Macy's Thanksgiving Day parade in front of a worldwide audience.

Our Keller High School Band is equally as successful in our concert programming. In 2021, the Wind Ensemble traveled to Chicago and performed at the Midwest Clinic. Additionally, our concert band programs earn Division I ratings at the UIL Concert and Sight-Reading Contest.

It is our goal to create lifelong lovers of music who will continue to support music education throughout their lives as a result of their experiences in the Keller High Band program.

Our Bands

Members of our program are assigned, based on audition, to an ability-based concert band that meets as an academic class. Auditions for these band placements are held each spring. Students will participate in both the marching band and concert band portions of the year and will be enrolled in their respective band class for both the fall and spring semesters.

- **Marching Band**
 - Composed of the Varsity Marching Band, Junior Varsity Band, Color Guard, and Drumline
 - Perform at football games, pep rallies, and parades
 - Varsity Marching Band members, including members of the Color Guard and Varsity Drumline, perform at several band competitions throughout the fall season

- **Wind Ensemble**
 - Most advanced performing ensemble
 - Mostly upperclassmen
 - Varsity level in UIL Concert and Sight-reading Contest
 - Required participation in All-State audition process
 - Required spring sectionals (before or after school)
 - Solo and Ensemble Contest participation
 - Perform at KHS graduation

- **Symphonic Band**
 - 2nd highest performing ensemble
 - Preparation band for Wind Ensemble membership
 - Mostly upperclassmen
 - Non-Varsity level in UIL Concert and Sight-reading Contest
 - Required participation in All-State audition process
 - Required spring sectionals (before or after school)
 - Solo and Ensemble Contest participation
 - May be asked to perform at KHS graduation

- **Concert Band I**
 - 3rd performing ensemble
 - Students of all grade levels
 - Goals: gain confidence in ensemble and individual performance skills
 - Sub-Non-Varsity level in UIL Concert and Sight-reading Contest
 - Required participation in All-State audition process
 - Required spring sectionals (before or after school)
 - Solo and Ensemble Contest participation

- **Concert Band II**
 - 4th performing ensemble
 - Primarily Freshmen and Sophomores
 - Goals: establish foundational skills for tone, technique, and ensemble skills
 - Strongly encouraged participation in All-State audition process
 - Possible spring sectionals (before or after school)

- **Jazz Band**
 - Spring semester performing ensemble
 - Meets after-school only
 - Auditions take place after marching band season ends
 - Spring concert
 - Must be enrolled in a band class to participate

- **Drumline**
 - Drumline students are also members of various concert bands (Wind, Symphonic, Concert)
 - Required participation in drumline contest, rehearsals, and extra performances
 - Percussion Bash Concert (a percussion only concert showcasing skills and learning) participation during spring semester
 - Indoor Drumline

- **Color Guard & Winter Guard**
 - Overseen by band directors
 - Taught by Color Guard instructor
 - Winterguard - local and national competitive season after marching season ends
 - Winterguard placements are from auditions
 - Practices are both during and after school
 - Instrumentalists are eligible to participate in Color Guard

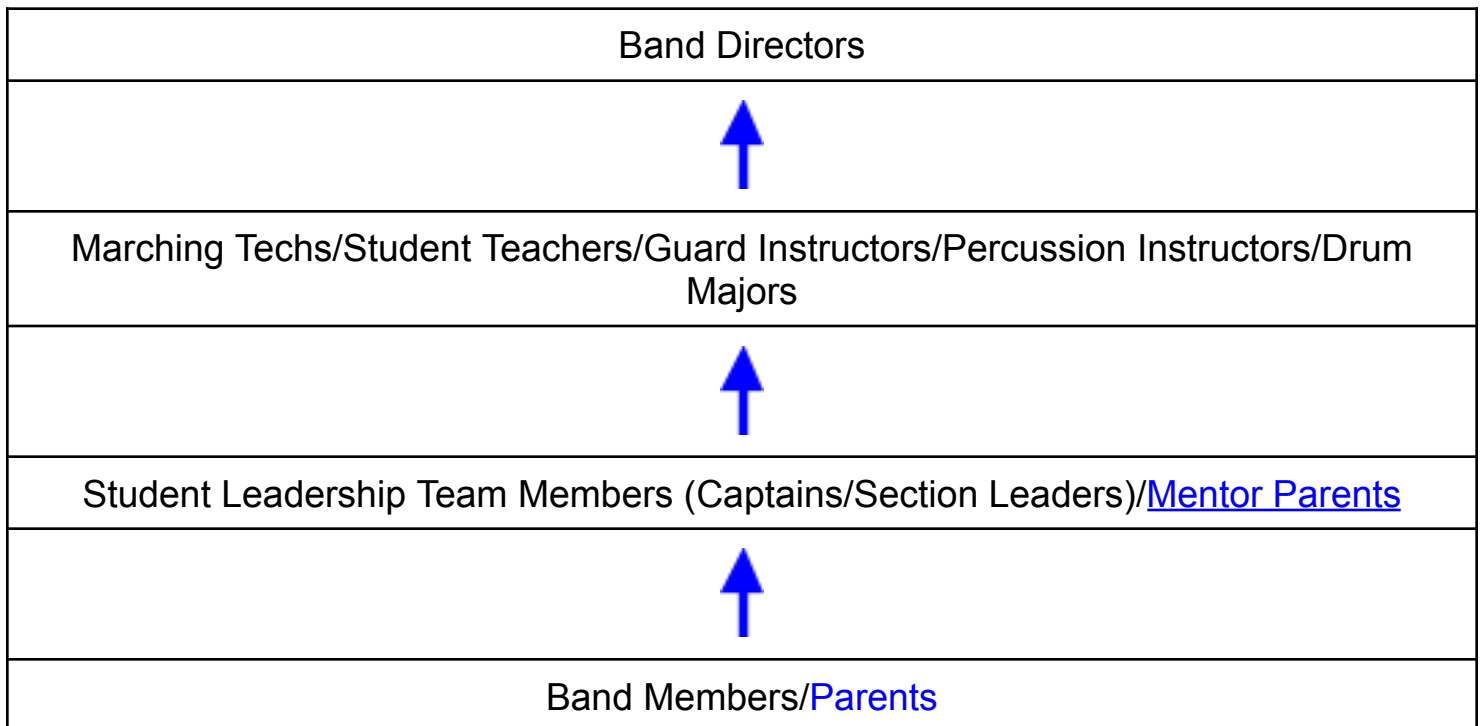
Communication

We encourage the use of effective communication skills while you are a member of the Keller High Band family. Part of this training for our students involves what we call the “Chain of Communication.” This structure has been successful in our program for many years but is especially critical during our fall marching season. Please utilize this whenever you have questions or clarification, but always know we are available to assist as well. Additional communication channels are outlined below.

Information will be dispersed in multiple ways to maximize understanding!

Daniel Bloss Email: daniel.bloss@kellerisd.net Office phone: 817-744-1558	Richard Alvarado Email: richard.alvarado@kellerisd.net Office phone: 817-744-1610	Connor Koriath Email: connor.koriath@kellerisd.net † Office phone: 817-744-1614	Juliana Fletcher Email: julianna.fletcher@kellerisd.net Office phone: 817-744-1587
--	--	---	--

Chain of Communication



Communication Methods

Email through Presto Assistant



Presto Assistant is the database system our band utilizes to store student records, send emails, track fees and payments, and much more! Students are already added to Presto when they join band, but parents must also have an account in order to access their student's information and receive emails from the Band Directors. Directions for creating your account and linking it to your student can be found [HERE](#).

All questions concerning Presto can be directed to: richard.alvarado@kellerisd.net

Website: <https://www.kellerhighband.org/>



The Keller High Band website is a valuable resource for all things band. Here you will find new parent information, upcoming events, financial information, and

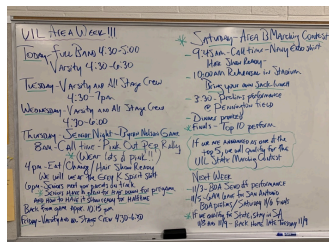
more! One of the best features of the site is the ability to sync your personal calendar to the live Google Keller High Band calendar. Stay up-to-date on all things band! Students and parents, follow instructions [HERE](#) on how to sync your calendar so you don't miss anything.

Google Calendar



The directors keep a "live" feed on the website of the Keller Band Google Calendar. This calendar has all dates for competitions, football games, concerts, when to take (and when not to take) SAT tests, and more! Add this calendar to your calendar to prepare. Click this [LINK](#) for directions on syncing.

The Whiteboard



"Check the Whiteboard" is a phrase you will hear often during your years in the Keller Band family. Each week, the directors write a schedule of events, important information, uniform requirements, and more. Make a habit of taking a picture of it every Monday during band class!

Social Media

Our Keller High Band social media accounts are run by our Booster Organization under the direction of the directors. Go and like all three of our platforms today! They are all valuable for communication, live “stories” of events, band pictures, and more! Our band hashtag is #kellerhighband



Band App



The Keller High School Band and Band Boosters use an app called Band to communicate information to students and family members. Each concert band has its own “Band,” as well as dedicated “Bands” for Boosters, General Info, etc. Pictures, documents, and notes can be shared safely through this app.

The following page has QR codes of all of the 2024-2025 Band Groups that are currently ready for joining! You only need to join the “Bands” that your student is a member of. These Bands allow private and safe communication to go out to all approved members. Only directors can approve membership into the Band Groups to allow for safety and privacy. To read more about the Band App and how it works, head to their FAQ section on the Band Website: [HERE](#).

2024-2025 School Year Band App QR Codes:

<p>Keller High Band (All Students)</p> 	<p>Keller High Band Boosters</p> 	<p>Varsity Marching Band</p> 	<p>Wind Ensemble</p> 
<p>Symphonic Band</p> 	<p>Concert I</p> 	<p>Concert II</p> 	<p>Concert III</p> 
<p>Percussion</p> 	<p>Color Guard</p> 	<p>Jazz Band</p> 	<p>9th Graders</p> 

Member Expectations

General Expectations:

Membership in the Keller High School Band is both an honor and privilege. Our standards are high and we expect each member of our organization to meet and exceed those expectations. Attitude, ability, academics, and accountability are four attributes that are of great importance to our program.

Band is the ultimate team sport and everyone in our group has a leadership role and responsibility. Each person will require the highest level of focus, organization, and preparation in order to achieve a great performance.

Students are also expected to be kind, courteous, attentive, respectful, and motivated at each rehearsal, sectional, and performance.

In addition, all Keller High School Band students are expected to:

- Adhere to the [Keller ISD Student Code of Conduct](#)
- Adhere to the [Keller ISD Guidelines for District Extracurricular Activities](#)
- Participate in all Keller High School band activities with a kind, respectful, hardworking, and motivated **attitude**. This attitude goes beyond the band and extends to our community as well as towards teachers, fellow students, and other staff members in our organization.
- Advance their musical **ability** by daily practice and instrument maintenance.
- Succeed in **academics** while a member of the band members per [UIL academic eligibility guidelines](#).
- Develop **accountability** and responsibility as it applies to personal and group guidelines, especially as related to attendance.

Behavior Expectations:

- Enter and exit all rehearsal areas in a quiet and orderly manner.
- Know your "Call Time" - Be on time (early) and prepared for all rehearsals, classes, etc. Punctuality and preparation are critical. Call time means arrival 15 minutes prior. *"To be early is to be on time. To be on time is to be late. To be late is unacceptable."*
- When a director holds up his hand and steps in front of a group, all playing, talking, and movement should cease immediately. Full attention should be given at this time.
- Always perform your best. *"Practice the way you expect to perform. Perform the way you have practiced."*
- Always read and listen to announcements.

- Always wait for instructions from a band director before moving, loading, unloading, or taking action of any kind. Directors will always give you the information you need to know!
- Band members will remain with the group at all times unless specific permission is given by a director. This includes bathroom visits, etc.
- Be prepared with music, the correct uniform, materials, and supplies.
- No food or drink (other than water), candy, or gum, is allowed in the KHS Band Hall or while in uniform (marching or concert) at any time unless specific permission has been given by a director.
- All cell phones may only be used with director's permission. This may include the bus when traveling. Media must only be used with individual headphones and never be audible to anyone else but the user. All media must be school appropriate and in compliance with the [KISD Student Code of Conduct](#).
- Band members are expected to maintain a clean environment in our facilities and while traveling. Our students always leave a place looking nicer and cleaner than we found it.
- Band members are expected to take utmost care of all band equipment. This includes band instruments, uniforms, music, facilities, etc.
- Only Band students are allowed in the Band Hall and surrounding areas. Only band students are allowed in the stands during football games unless director permission is specifically given.
- Band lockers are to be kept clean and neat at all times. This locker should be used only for band instruments, equipment, music, etc. Storage in a locker is a privilege. Please provide a combination lock for the locker. The combination must be kept on file with directors.
- Keller High Band members support all groups affiliated with Keller ISD. This includes groups such as other KISD bands, cheer, drill team, etc.
- Keller High Band members always refrain from the use of degrading language, profanity, and obscene gestures. This expectation includes student use of social media. These destructive behaviors will not be tolerated.
- Keller High Band members will speak in a positive manner about our band, fellow band members, and our staff. Please let our directors or the individual know if you have any questions or issues so positive outcomes can happen.

“When in doubt, don’t.” - Benjamin Franklin

If you are ever in doubt about an action, simply don’t do it. You are a representative of a large and distinguished community of musicians that has a stellar reputation. You should always want to reflect positively on yourself, your family, our band family, and our Keller community.

Marching Season Expectations

Physicals:

- Submitting a yearly [physical](#) is required per UIL guidelines. Please read the following [letter](#) and make sure all forms are submitted via Keller ISD through the [KISD RankOneSport Website](#) (these forms include helmet/medicine/insurance, Keller emergency card, extracurricular code of conduct, & UIL forms signatures page). All physicals and medical history forms should be submitted to the KHS Band through this google form: [HERE](#). *DUE DATE: JULY 1 for participation.*

Uniform:

- Appropriate conduct is expected of all band members while in uniform.
- Follow Uniform Crew instructions at all times.
- Uniform parts must be worn correctly at all times.
- Bring all personal uniform pieces to and from school as needed. Do not leave socks, shoes, t-shirts, etc. in the bandhall or in your uniform bag when not in use.
- No eating, gum, drinking (only water) while in uniform unless director approval is given. Do not accept food, drink, etc. from anyone other than band personnel during performance events.
- No running or horseplay while in uniform.
- Band member hair must be completely off the collar and concealed when wearing the band shako. Hair must be ready at call time. The viewing of a “hair class video” will take place once school begins.
- No colored nail polish or visible jewelry while in uniform.
- Handle all pieces of the uniform correctly and store your uniform on the correct rack when not in use.
- Any damage or loss to the uniform may be the responsibility of the band member. Member may be required to repair or replace as necessary.

Summer Band Uniform	Full Band Uniform
<ul style="list-style-type: none">● Band T-shirt (tucked in)● Black Athletic Shorts● Neutral Color socks and tennis shoes● Hair pulled back away from face	<ul style="list-style-type: none">● All uniform pieces● Band t-shirt● Black (or dark-colored) compression shorts● Long solid black socks● Black MTX Marching Shoes● Hair fully styled for performance● Cold Weather - Navy blue band jacket or Letter Jacket (optional)

Rehearsal Equipment:

- Instrument
- Music/Flip Folder, pencil, accessories
- 1-gallon water jug, filled and iced daily
- UDB App and smartphone charged (Varsity only)
- Sunglasses, sunscreen, hat
- Light-colored, loose-fitting clothing
- Flexible tennis shoes (cross-trainers)

Marching Band Assignments:

- Directors will assign the best-prepared marchers to perform in the Varsity competition show. Selections will be based on mastery of music and marching skills.
- Please note: No member will ever “own” a position in our band. Directors have the authority and discretion to make changes and decisions in personnel at any time. The best way to secure your position is to exhibit excellence in ability, attitude, academics, and accountability.

Concert Season Expectations

Concert etiquette is expected at all times by our band members. An excellent guide to help learn proper concert etiquette can be found [HERE](#). Feel free to share this resource with your family and friends that might attend!

Uniform:

- Gentlemen
 - Tux jacket - provided
 - Tux pants - provided
 - White Tuxedo Shirt - student provides
 - Black Bow Tie - student provides
 - Black Cummerbund - student provides
 - Solid Black Socks- student provides
 - Solid Black Dress Shoes -- student provides
 - Concert Black is often needed for upper level ensembles (jazz band, percussion groups, etc.) Concert Black for gentlemen: black pants, black dress shirt, black belt, black socks, black shoes.
 - * Tux jacket and pants must be returned at the end of the season professionally dry-cleaned.
- Ladies
 - Solid black professional concert attire
 - Black ankle-length skirt (slit no higher than knee), black slacks, or black dress

- Black blouse or sweater with sleeves. Sleeves must be $\frac{3}{4}$ or longer.
- Black hose, tights, or trouser socks
- Black closed-toe shoes
- NOT acceptable: shorts, short skirts, capri length pants, slits above the knee, sleeveless or strapless. No bare shoulders, midriffs, legs. Feet must not show. No patterns on clothing except solid black. No excessive sequins or beads. Avoid velvet and blacks that don't match.
- No excessive jewelry.

Attendance

In order to maintain membership in the Keller High Band program, all students are required to participate in the JV or Varsity Marching band, as well as a concert band or Color Guard class. Members are expected to attend all required rehearsals and performances in order to maintain membership in the band program. All rehearsals and performances are posted on the Band Calendar located on our [Keller High Band website](#). Directions for syncing the band calendar with your own can be found: [HERE](#).

Because of the participatory nature of marching band, attendance is required for all rehearsals and performances. Excused absences will be granted only for significant illness, family emergencies, religious holidays/observances, and extenuating circumstances as approved by the director. Non-school-sponsored activities, teams, clubs, or jobs must not conflict. Any member who misses rehearsals and performances may have their role replaced by another band member, and can be reassigned to a different elective if they cannot meet these expectations.

Know your "Call Time" - Be on time (early) and prepared for all rehearsals, classes, etc. Punctuality and preparation are critical. Call time means arrival 15 minutes prior. "To be early is to be on time. To be on time is to be late. To be late is unacceptable."

Conflicts with school activities will happen and can be worked out with proactive communication and compromise. Please ask for an event calendar for all groups that you are a member of to allow time to work out scheduling needs, if necessary. The band director will work with other teachers, coaches, and directors of various school activities to give each member the best opportunity to be a part of multiple extracurricular activities.

SAT/ACT testing dates often conflict with band performances. The band calendar is updated with recommended testing dates for your convenience. In the event that a student is testing on the morning following a football game, parent contact

is needed more than 24 hours in advance with an opportunity to leave after the halftime performance. Procedures involving checkout, notifications, etc. will be handled based on individual member needs.

All absences must be approved in advance! A written request must be submitted to the band director for approval. ***Do not communicate absences through a peer or student leader.***

Financials

Band Fees

Each year our band members will be required to pay Keller High Band fees that are due at Band Day Registration (typically held in middle to late August). Any families experiencing financial hardship should consult the band director to discuss payment options.

2024-2025 Keller High Band Membership fees are subject to change and will be paid through our KISD webstore. A direct link to an itemized list can be found via our website [HERE](#). If you need help accessing your KISD webstore account, please utilize [these directions](#).

* Color Guard and Percussion members are responsible for additional fees not included in this list.

The Shopping List - Click [HERE](#) to see details!

There are often many items that are needed outside of normal band fees. Please look at [the list](#) for help in acquiring these necessary items before summer band camp begins.

Private Lessons -- KISD Private Lesson Info can be found [HERE](#)

Lessons are available to all of our Keller High Band members and will aid in progression through the program. All members are strongly encouraged to take advantage of private lessons with our professional teachers. Lessons begin at approximately \$20 for a private 30-minute lesson. Information will be provided during the first week of classes. Private lesson teachers work on musical fundamentals as well as preparation for All-State auditions and the Solo and Ensemble Contest.

THE Glossary

All-State, All-Area, All-Region

Students in the Wind Ensemble, Symphonic Band and Concert Band I are required to learn All-State Music each fall and audition for a place in one of the bands as part of their curriculum. Concert II and Concert III students are highly encouraged to audition as well.

By auditioning for All-State, students are committing to participating in the following events:

1. Mock All-Region Auditions
2. All-Region Auditions (Phase I and Phase II, when applicable for your instrument)
3. 9th Grade All-Region Auditions (for all 9th graders who do not earn a place in the high school Region Band)
4. All-Area Auditions (for students who advance to the Area level)
5. All-Region Band Clinic/Concert (required for all students who earn a place in the ensemble)
6. All-State Band Clinic/Concert (a very special event for students who earn a place in the All-State Band)

* Specific dates for each of these events are available on the online calendar. School Bus Transportation is provided for most of these events.

Band APP and Pages



The Keller High School Band and Band Boosters use an app called Band to communicate information to students and family members. Each concert band has its own "Band," as well as dedicated "Bands" for Boosters, General Info, etc. Pictures, documents, and notes can be shared safely through this app.

Booster Membership

Booster membership is an essential part of a successful band season and allows parents to be directly involved in their student's band experience. The financial support is instrumental in the tools our band uses to be tops in their field. Be thinking about how you can support the band by joining the Keller Band Boosters.

Band Competitions

KHS Varsity Band members compete throughout the fall season in a variety of marching competitions on many Saturdays. Competitions include, but are not limited to, UIL, BOA, etc. More information can be found on the Marching Band section of the handbook.

BOA

Bands of America. This organization hosts competitive marching competitions for bands throughout the United States. More information can be found via their website [HERE](#).

Call Time

- Know your “Call Time” - Be on time (early) and prepared for all rehearsals, classes, etc. Punctuality and preparation is critical. Call time means arrival 15 minutes prior.
- “To be early is to be on time. To be on time is to be late. To be late is unacceptable.”

Concert Black Uniform

Concert Black Uniform is performance attire for gentlemen if tuxedos are not required. Concert Black is black slacks, solid black dress shirt, black belt, black socks, black dress shoes.

Dietary Needs Form

Each band student's family will receive an email with a link to complete the annual Student Dietary Information form. Information provided on this form allows the Boosters to be sure we are meeting the dietary needs of all students, whether or not a Game Day Meal Plan is purchased, as we provide meals for other events and all competition meals throughout the season. This is a required form for each band student and will need to be completed prior to registration day.

Flip Folder/Lyre

- Flip Folder- This is used to hold all of your music for football games and other marching activities. If you go to Bells Music Shop or Music 1st you will be able to find a flip folder that fits your specific instrument.



- Extra Sheet Protectors for your flip folder will also be needed, and can also be found at Bells or Music 1st music shop.

- Lyre- This will be what keeps the flip folder on your instrument, and can also be found at either music store to fit your specific instrument.

Full Band Uniform

- Full uniform: All uniform pieces (Keller Band t-shirt, black compression shorts, jacket, coveralls, gauntlets, gloves, shako)

Game Day Meals

The Game Day Meal Plan is a convenient option for purchase, offered by the Band Boosters, that provides meals on game day and after school band events. These meals are quick turnaround and provide the easiest way for your student to have a good meal following school with enough time to prepare for the game or event. See our FAQ about Game Day Meal Plan [HERE](#).

Half Band Uniform

- All uniform pieces MINUS jacket, shako, gloves, or gauntlet

Keller High Band Boosters - Find out more [HERE](#)

The Keller High School Band Boosters Organization is operated as a cooperative effort between parents, alumni, Band Booster board members, and the Band Directors. The Boosters assist in many aspects of the Band program. Parents are highly encouraged to attend the meetings, volunteer, and be an integral part of their student's Band experience. An informational meeting for prospective students will take place in the spring of your child's 8th grade year. Also, a parent meeting will be held at the end of May, the same week as the Band Camp sessions.

During Registration, you will be signed up to receive the weekly KHS Band Booster newsletter. This newsletter is sent electronically to your email at the

beginning of each week. It will list all the weekly band activities along with details regarding dates, times and locations. Sign up [HERE](#).

KISD Marching Expo Night

All Keller ISD marching band students in grades 7-12th will participate in this annual event held each fall at the KISD stadium. Students from each high school will play a portion of their marching show, middle school students will play pep/stand tunes, and all students will play in a finale piece on the field to finish out the performance. A favorite night in our district for KISD Fine Arts!

KISD Webstore

Band fees can be paid using the KISD Webstore. Directions for using the webstore can be found on our website or by clicking [THIS](#) link.

Letter Jackets

A student must earn 10 points in a school year to letter. Points will be awarded for the following

Wind/Percussion: 4 pts. – TMEA Region Band membership 3 pts. – TMEA Area Band membership 2 pts. – TMEA All State Band membership 2 pts. – Participation in Mock All Region 2 pts. – TMEA All Region Jazz Band membership 4 pts. – First Division on Class One Solo at KISD Solo/Ensemble Contest 4 pts. – First Division on Class One Ensemble at KISD Solo/Ensemble Contest	Color Guard: 4 pts. – Marching Band Participation 4 pts. – WGI/NTCA Winter Guard Participation 2 pts. – First Division on Class One Solo at KISD Solo/Ensemble Contest (Class will be determined by Guard Instructor) 2 pts. – First Division on Class One Ensemble at KISD Solo/Ensemble Contest (Class will be determined by Guard Instructor)
--	---

- At the discretion of the campus director and the Director of Fine Arts, each band student that has not received a letter jacket by the end of their 11th grade year, and who has remained a member in good standing every semester of their 9th, 10th, and 11th grade years, will be awarded a jacket at the beginning of their senior year.
- All appeals to lettering decisions, and all special circumstances, will be heard and dealt with on a case-by-case basis by a committee composed of the Director of Fine Arts, the appropriate campus director, and another committee member appointed at the discretion of the Director of Fine Arts. • Each campus director will be responsible for ensuring that a student does not receive more than one major award.

Mentor Parent

If you are a new KHS Band parent and have questions, please send an email to your appropriate Mentor Parent. They are your first point of contact for general questions about rehearsals, events, and an excellent source for general information.

A link to all Mentor Parent contact information can be found on the website [HERE](#).

Newsletters

KHS Band Boosters sends out a regular newsletter. During marching season, it's sent at least weekly. During the spring, it's not as frequent. It is a wealth of pertinent information about the student band program and the ways parents can support the students. It's a primary tool of communication.

Registration Day

All students and one of their parents/guardians are required to participate in Band Registration Day.

STUDENTS are fitted for their marching uniform and other clothing items, and have a band photo taken. **PARENTS** gather for a required meeting with the band directors. Parents confirm payment of student band fees and then move to Band Boosters informational tables.

What to bring on REGISTRATION DAY:

1. Band Student and Parent/Guardian
2. Student's ID number (the 6-digit KISD student ID)
3. Forms of payment (cash/checkbook/credit card)
 - *Band Fees:* if you have not completed payment of your KHS band fees, you will be able to pay at Registration, but only with cash or check. You may go online to the KISD [web store](#) anytime before Registration Day and pay by credit card. Band fees may not be combined with any booster fees/purchases.
 - *All other Band Booster fees for Membership, Spirit Wear, etc.:* cash, check and credit cards are accepted.

Shako

“tall, cylindrical military cap, usually with a visor, and sometimes tapered at the top. It is usually adorned with an ornamental plate or badge on the front, metallic or otherwise; and often has a feather, plume (see hackle) or pompom attached at the top”

SLT - Student Leadership Team

Student Leadership Team is composed of upperclassmen that have been chosen to help lead the band. All student leaders include positions like Drum Major, Captain, Section Leaders, Librarians, Quartermasters, Uniform Managers, and more. To obtain an SLT position, members go through a rigorous process each spring that includes peer reviews, questionnaires, interviews, etc.

Solo and Ensemble Contests

Solo & Ensemble Contest is an annual event that takes place throughout the state in which students prepare their own performances either by themselves or with a small group of friends. These performances are evaluated by a judge and scored against a rating system.

Spirit Night Fundraisers

Spirit Night fundraisers are held at local restaurants and our band receives a percentage of the sales. Social media platforms and the Keller High Band [Website](#) will give reminders and information about these upcoming calendar events.

Spirit Show

KHS Band spirit show is performed at halftime during home football games. Students in both JV and Varsity Marching band will play the Keller High fight song, Let's Go Keller, etc. during the Spirit Show performance.

Summer Band Camp

Traditionally starts the last week of July and continues until the first day of school in August. Members must attend the entire Summer Band Camp to be eligible for membership in the Varsity band.

Summer Drum Camp

Traditionally held the week before Summer Band Camp begins (traditionally the 3rd week of July). Although not necessary to maintain membership, anyone who misses camp will automatically be placed on JV drumline.

Summer Color Guard Camp

Traditionally held in mid-July, Summer Color Guard Camp meets on its own during the week. During this camp, members learn valuable equipment and movement fundamentals. Students that miss any instructional time during this week may be assigned to alternate positions by the director for all or portions of the Varsity marching band show.

Summer Uniform at Football Games

- Band T-shirt
- Black Athletic Shorts
- Neutral Color Tennis shoes

Table Talks

Our Booster program has developed a series of parent information series we call Table Talks. These talks are designed to be “just in time” information sessions that will help you as you navigate the world of marching band each year.

Topics cover everything from summer band camps and competitive marching season to concert season and solo contests. Not only are these meetings fun (door prizes!), but it is a great time to meet new people, learn new information, and learn new ways to be successful in the world of KHS Marching Band!

UDB App



UDB is an app that our members use to learn marching drill each season. Download is free in the app store.