

MTL Healing Space Accessibility Overview

This content was prepared with Julie-Anne Perrault, accessibility consultant.

Our space is overall accessible:

- Wide entrance, corridors and rooms
- Elevator to the 2nd floor
- 2 accessible washroom stalls
- Easy wayfinding
- Adjustable lighting
- Different seating options

Note: doors are not power-operated, and parking or public transit can be challenging (paratransit is easiest).

Getting here

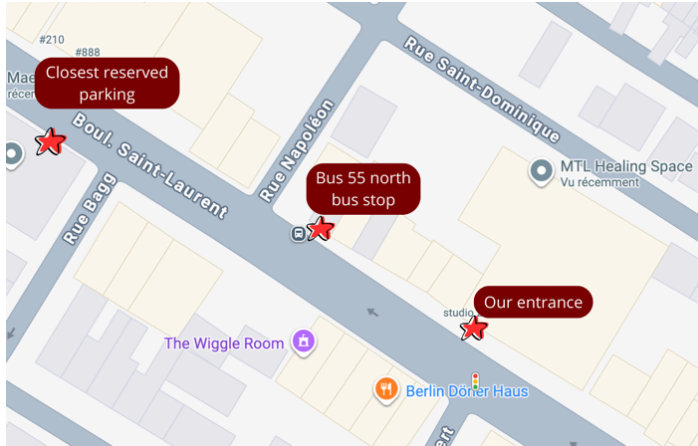
We are located at 3863, Saint-Laurent Boulevard, H2W 1K4, #208 (inside the Warshaw building).

By public transit

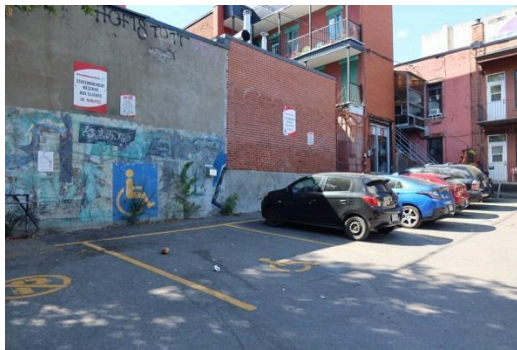
- Closest metro: Saint-Laurent (no elevator).
- Bus 55 stops 50 m from our door northbound and 200 m southbound.
- Other buses within 10 minutes: 24, 185, 144, 129.
- Paratransit can park near the entrance.

By car

- Closest accessible reserved space : PE277, about 150 m away (see city [parking map](#)).



Simple map indicating the entrance, the bus stop, and the reserved parking space on Saint-Laurent Street.

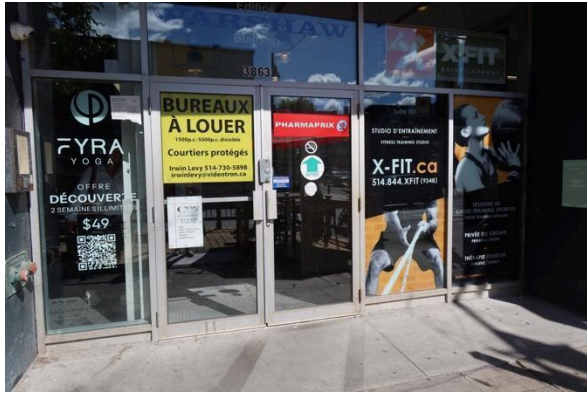


Accessible parking space behind the pharmacy.

Accessible ramp to access the building through the pharmacy.

Building Entrance to MTL Healing Space

Entrance doors are wide but not power-operated. During pharmacy hours, you may use their automatic entrance. Mostly visible number and name, though lighting can play tricks.



Main entrance of the building with clear space in front of the 2 large doors. /
 Elevator door right behind the entrance. / Standard elevator with handrails. /
 Relatively high controls of the elevators with braille and tactile buttons.

Take the elevator to the 2nd floor. It measures more than 1.3 m x 1.9 m (4.2 ft x 6.2 ft)
 and includes braille and tactile buttons, but some controls could be too high.

Turn right twice, down the halls to reach local 208.



Our main entrance is 208-A, but you then encounter narrow internal doors (68 cm / 27 inches).

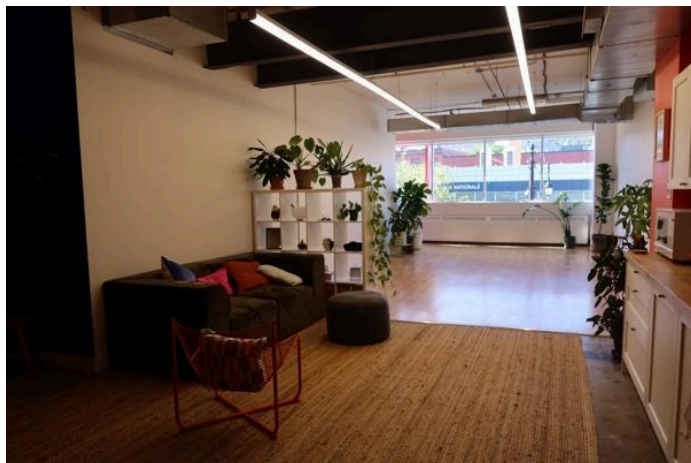
The most accessible door is 208-B (88 cm / 34 inches) – turn right one more time. You will have access to all our services.



Our main entrance with a contrasted door frame. The door opens inwards. / Our most accessible entrance with a contrasted door frame. The door opens outwards.

Our Space

All main areas are wheelchair accessible.



Main large workshop room with clear space, natural and artificial lighting, a large window, a big sofa, wood flooring and low-rise carpet.



Dining table front entrance.



Spacious kitchen table and large entrance from the inside.
Kitchenette with a sink, a refrigerator and a microwave.



Cozy room for counselling sessions
with sofas and a massage table.

The areas have movable tables, sofas, and chairs, some with armrests and some without. Lighting is adjustable through different intensities, colours and blinds. Acoustics have yet to be tested with a lot of people.

Washrooms

We have 2 wheelchair accessible stalls on our floor. The stalls measure about 1,5 m x 1,5 m (5 ft x 5 ft) and the bowl height is about 44 cm (17 inches).

Washroom doors are locked and heavy; we can always assist.

Fixtures are generally usable, but not fully up to standard (i.e., no L bars, high hand dryer).



Woman's accessible washroom stall with horizontal bars and outward-opening door. Men's accessible washroom stall with horizontal bars and outward-opening door. Wheelchair accessible counters with easy-to-use faucets.

Accommodations we can provide:

- Help with opening doors (building or washroom).
- Wayfinding assistance from the entrance.
- Adjustments to lighting, music, communication, or movement during activities
Access to a quiet room.
- Please ask for any additional accommodation or accessibility needs.