

## **Akurdi Railway Station**

The **Amrit Bharat Station Scheme** has been launched for development of Railway stations on Indian Railways. The scheme envisages development of stations on a continuous basis with a long-term approach.

It involves preparation of Master Plans and their implementation in phases to improve the amenities at the stations like improvement of station access, circulating areas, waiting halls, toilets, as necessary, cleanliness, kiosks for local products through schemes like 'One Station One Product', better passenger information systems, landscaping etc. The scheme also envisages improvement of building, integrating the station with both sides of the city, multi-modal integration, amenities for Divyangjans, sustainable and environment friendly solutions, phasing and feasibility and creation of city centers at the station in the long term.

Under the scheme, **1337 stations** have been identified for upgradation/modernization over Indian Railways.

### **History of Akurdi Railway Station:**

Akurdi Railway Station is one of the main Railway stations on Lonavala-Pune Section of central Railways in India. The construction of this railway station was started in 1858, The Bhore Ghat incline connecting Palasdari to Khandala was completed in 1862, thereby connecting Mumbai and Pune. Currently, the station is classified as NSG-3. The station has two platforms and average daily footfall of passengers is 17079

### **Revitalizing Akurdi Station under the Amrit Bharat Station Scheme**

An Insight into The Rs. 33.80 Crore, revamp Of Akurdi Station. Akurdi Railway Station in the Pune division is all set to undergo a remarkable transformation as part of the visionary Amrit Bharat Station Plan, spearheaded by the esteemed Prime Minister Narendra Modi, Akurdi Station is being redeveloped under the Amrit Bharat Station Scheme with an investment of Rs 33.83crore.

*Before Development*



*Proposed View*





*Main Entry*



**Facility planned at Station:**

In Phase-I, following improvement works costing Rs. 33.80 Cr. are planned –

- **Enhanced Station Approaches and Circulating Area:** Improvement of station approaches with separate entry & exit, drop off zone, Porch, signages and landscaping for beautification of circulating area.
- **Inclusive Accessibility and Facilities for Divyangjan:** Divyangjan-friendly design with accessible signage, dedicated toilet facilities, and separate parking areas for two-wheelers, four-wheelers, and Divyangjan passengers.
- **Façade Enhancement:** Major improvement of the façade of the existing building with LED lighting for improved aesthetics.
- **Platform Accessibility Enhancements:** 2 Nos lifts available on platform no. 1 & 2
- **New Passenger Amenities and Improved:** Provision of new booking office, Concourse, waiting hall, modern toilet block and improvement of retiring rooms, old station building etc.
- **Platform Improvements:** Improvement of Platform surface & new shed and covering of platform surfaces.
- **Station Illumination:** Overall station illumination improvement.
- **Upgraded Passenger Information Systems:** Improvement to passenger information system by providing Coach Guidance display board, Multiline Display Boards, Single Line Display Boards, Public Addressing System, Large LED screens and GPS based Digital Clock.

## Design Philosophy

The local design philosophy for Akurdi Railway Station blends modern amenities with a functional and aesthetically pleasing environment. The design will focus on the following principles:

- **Reflecting Modern Architecture:** Incorporating Modern architectural features such as flowing rhythm and use of latest sustainable material.
- **Use of Regional Materials:** Utilizing local materials like brick work, glass and ACP cladding to maintain harmony with the surrounding landscape.
- **Sustainability and Climate Sensitivity:** Focusing on energy-efficient cooling, shade structures, and green spaces to address the semi-arid climate while promoting sustainability by incorporating future provision for solar panels on roofing sheets of parking.
- **Modern Amenities:** Modern infrastructure is been proposed by providing passenger amenities like digital signages, lift, divyangjan friendly toilets with universal design.
- **Warm Color Palette:** Using earthy tones inspired by Maharashtra's landscape.

These principles will transform Akurdi Railway Station into a modern, sustainable, and enhancing the passenger experience and creating a landmark for region.

## Challenges overcome:

The old station building lacked the aesthetics and the lack of proper space utilization, which have been improved by the revamping of the complete station building. Now the station building is more spacious and passenger friendly. The existing circulating area was not having the proper movement of the vehicle with single entry & exit and the same has been improved through the planned development of circulating area, separate entry/exit and increased parking space. This will give an ease of movement of vehicles and proper vehicle navigation in the circulating area. The station platform's surfacing was improved with tactile marking for Divyangjan, and additional platform shelters were provided for the passengers waiting at platform, which will further help them during hot and rainy weather. New spacious waiting rooms/ halls were constructed, which will provide a comfortable waiting space to the passengers. New booking offices with latest facilities giving restriction free access to passengers. Modern toilets are constructed providing hygienic & comfortable experience to users as well as facilities for divyangjan are proposed.

## Work In Progress

### Current Status of Work:

The work is progressing steadily with a tentative completion in 2025. Soon, Akurdi Railway Station will emerge as a shining beacon of modernity and efficiency, setting new standards in railway infrastructure and passenger amenities.



*Main Entrance Waiting Hall LHS (Work in progress)*



*Main Entrance Waiting Hall RHS (Work in progress)*

**Circulating area & Portico:**

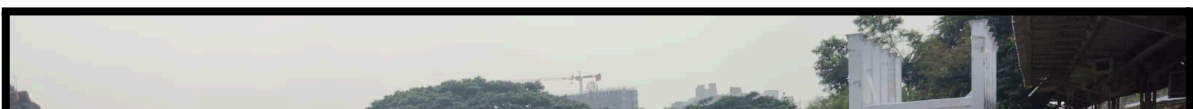


*portico*

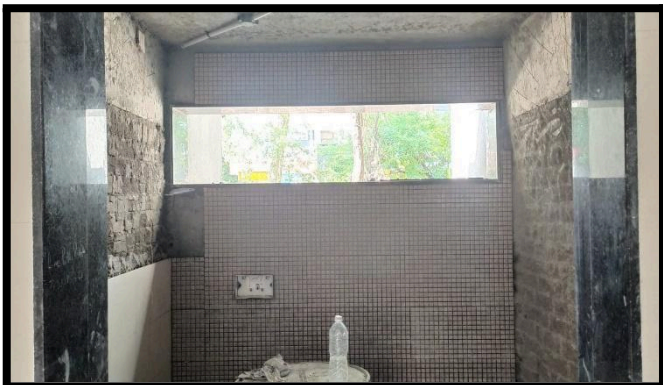




***COP & PF SURFACE - WORK COMPLETED***



***FOB (Work in Progress)***



***TOILET – (WORK IN PROGRESS)***



*Water Booth (3/4) - (Work in progress)*





)