

# Comparing Perspectives on Current Events

**Directions:** Watch these 3 resources from this week to learn about the Bears Ears Monument controversy.

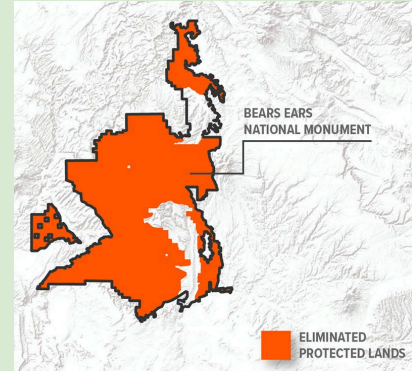
Resource #1: [NY Times Article](#)

Resource #2: [Bears Ears - Don't let this special place be erased](#)

Resource #3: [Trump shrinks Utah's national monuments](#)

Resource #4: [The battle for Bears Ears](#)

Use the flowchart below to take note of supporting evidence, connect to Federal, State, and Local powers and express your opinion. Find and fill in the answers for any  empty white box.



## ISSUE: Bears Ears National Monument

PERSPECTIVE #1	PERSPECTIVE #2
Some people think that <b>Bears Ears should be protected.</b>	Some people think <b>Bears Ears should be reduced.</b>



<b>EVIDENCE</b> Find 1 piece of evidence. Paraphrase or use direct quotes from one of the class resources that supports perspective #1 above.	<b>EVIDENCE</b> Find 1 piece of evidence. Paraphrase or use direct quotes from one of the class resources that supports perspective #2 above.
Bears Ears should be protected because...	Bears Ears should be reduced because...
How do people with perspective #1 feel about <b>FEDERAL (National) POWER</b> , for this issue?	How do people with perspective #2 feel about <b>FEDERAL (National) POWER</b> , for this issue?
How do people with perspective #1 feel about <b>STATE/LOCAL POWER</b> , for this issue?	How do people with perspective #2 feel about <b>STATE/LOCAL POWER</b> , for this issue?



What is **YOUR** opinion concerning the controversy at Bears Ears Monument?

Explain why you feel this way using complete sentences. Use evidence from the resources to back up your opinion.

--