



# 2024 Conference Agenda

## Pre-Conference: Tuesday, April 9, 2024

### Pre-Conference: Tuesday, April 9, 2024

*\*Times are subject to change\**

11:00 a.m.	<b>Keynote: Is Being “At the Table Enough?” Maximizing Governments’ and Community Partners’ Return on Investments in Public Engagement</b>  <i>11:00 a.m. - 12:30 p.m. MDT   June Isaacson Kailes</i>  Learn how to strengthen and operationalize outcomes that are mutually beneficial to government and community partners; contrast old and new approaches to public engagement; and review principles such as clear objectives, trust, transparency, feedback loops, support roles, just-in-time training, sustainable efforts, and measuring success.
12:30 p.m.	<b>15 Minute Break</b>  <i>12:30 p.m. - 12:45 p.m. MDT</i>
12:45 p.m.	<b>Presentation: Introduction to the Access and Functional Needs Resource Framework in Emergency Management</b>  <i>12:45 p.m. - 1:15 p.m.   Sadie Martinez, Hannah Hoffmann, Tim Mann</i>  Everyone needs access to resources in order to function during emergencies. We will introduce you to a memory tool that will help everyone prepare for resource disruptions in emergencies and disasters, as well as help meet legal obligations for Protected Class laws (Section 504, ADA, CRCL, Aging).
1:15 p.m.	<b>Discussion: Individual Preparation for Power Resilience When Disruptions Strike</b>  <i>1:15 p.m. - 2:15 p.m.   Alexandra Enders, June Isaacson Kailes, Julia Beems, Joycelyn Fankhouser, Andrew Notbohm</i>  An informal and participatory discussion with presenters, service providers, and audience members on individual preparedness solutions and strategies for power outage disruptions.
2:15 p.m.	<b>30-Minute Break &amp; Refreshments</b>

	2:15 p.m. - 2:45 p.m. MDT
2:45 p.m.	<b>Presentation: Learning Emergency Management Language</b>  2:45 p.m. - 3:45 p.m.   Michael Houston (moderator), Aimee Voth Siebert, Jaclyn Kurle, Julia Beems, Charlotte Olsen, Sadie Martinez  Language used in disasters varies widely between agencies and organizations. Join us as we look at the shared language used by Emergency Management, Disability Advocates, Public Health, and Human Services in Colorado that has led to more effective emergency planning and response.
3:45 p.m.	<b>15-Minute Break</b>  3:45 p.m. - 4:00 p.m. MDT
4:00 p.m.	<b>Presentation: Public Health, Human Services, and Emergency Management: Aligning to Address Cascading Challenges</b>  4:00 p.m. - 5:00 p.m.   June Isaacson Kailes (moderator), Aimee Voth Siebert, Jaclyn Kurle, Jacquie Stanton, Sadie Martinez, Charlotte Olsen, Mike Houston  How do Human Services, Public Health, and Emergency Managers work together? Partnerships between these agencies are vital to meet community resource needs and mitigate cascading challenges. Learn from Colorado's leads in each area how they have worked to create a shared language that has helped to improve community resilience across Colorado.
5:00 p.m.	<b>30-Minute Break</b>  5:00 p.m. - 5:30 p.m. MDT
5:30 p.m.	<b>Dinner</b>  5:30 p.m. - 7:00 p.m. (advanced notice required)

## Conference Day 1: Wednesday, April 10, 2024

Conference Day 1: Wednesday, April 10, 2024 <i>*Times are subject to change*</i>	
10:00 a.m.	<b>Registration</b>  10:00 a.m. - 11:30 a.m. MDT
11:00 a.m.	<b>Lunch and Optional Icebreaker Activity</b>  11:00 a.m. - 11:30 a.m. MDT
11:30 a.m.	<b>Welcome &amp; Opening Remarks</b>  11:30 a.m. - 12:00 p.m. MDT   Mike Willis, Nancy Dragani, Sadie Martinez, Hannah Hoffmann, Tim Mann
12:00 p.m.	<b>Keynote Address</b>  12:00 p.m. - 12:40 p.m. MDT   Sherman Gillums Jr., Ed.D., Valerie Haven
12:40 p.m.	<b>Panel: Benefits of CMIST in Emergency Management</b>  12:40 p.m. - 1:10 p.m. MDT   Jaclyn Kurle (moderator), Sadie Martinez (moderator), Stephanie Hackett, Teresa Bagdol, Heather Lafferty, Rob Crowder, Mykel Kroll  The CMIST Resource Memory Tool is rapidly gaining acceptance as a way to quickly identify the most critical resources needed by community members, regardless of their demographic identity or status. Hear from Emergency Managers about how their communities have benefitted from using the CMIST Resource Memory Tool in preparedness and resilience.
1:10 p.m.	<b>Panel Q&amp;A / Optional Break</b>  1:10 p.m. - 1:40 p.m. MDT  Panelists will answer questions from the audience during this optional break time.
1:40 p.m.	<b>Exhibitor Speed Talk</b>  1:40 p.m. - 1:55 p.m. MDT   The Arc of the Central Mountains and Pikes Peak Region, Rocky Mountain ADA  Learn about the services and resources provided by participating exhibitors.
1:55 p.m.	<b>30-Minute Break &amp; Refreshments</b>  1:55 p.m. - 2:25 p.m. MDT

2:25 p.m.	<p><b>Panel: Planning for your CMIST Resource Disruptions Until Help Arrives</b></p> <p><i>2:25 p.m. - 2:55 p.m. MDT   Aimee Voth Siebert (moderator), Jaclyn Kurle (moderator), Sadie Martinez (moderator), Christe Coleman (moderator), Allison Wilson, Jill Pidcock, Joycelyn Fankhouser, Mykel Kroll, Curt Garrett</i></p> <p>When planning for disasters, we traditionally look at specific disaster types to inform us on how to be prepared. Join us to discuss planning for the resource disruptions those disasters cause, and how planning for disruptions with the community leads to greater resilience, both individually and collectively.</p>
2:55 p.m.	<p><b>Panel Q&amp;A / Optional Break</b></p> <p><i>2:55 p.m. - 3:25 p.m. MDT</i></p> <p>Panelists will answer questions from the audience during this optional break time.</p>
3:25 p.m.	<p><b>Exhibitor Speed Talk</b></p> <p><i>3:25 p.m. - 3:40 p.m. MDT   ReachWell, Natively Fluent</i></p> <p>Learn about the services and resources provided by participating exhibitors.</p>
3:40 p.m.	<p><b>Presentation: Moving Beyond the Buzzword of ‘Whole Community Inclusion’ in Emergency Management</b></p> <p><i>3:40 p.m. - 4:25 p.m. MDT   Sadie Martinez, Hannah Hoffmann, Tim Mann</i></p> <p>How did the Colorado Access and Functional Needs Program get its start, and where is it headed? Learn about the program’s history, current scope and focus, and future roadmap.</p>
4:25 p.m.	<p><b>Break</b></p> <p><i>4:25 p.m. - 4:40 p.m. MDT</i></p>
4:40 p.m.	<p><b>Exhibitor Speed Talk</b></p> <p><i>4:40 p.m. - 4:55 p.m. MDT   Colorado Office of Emergency Preparedness and Response, Colorado Commission for the Deaf, Hard of Hearing, and DeafBlind</i></p> <p>Learn about the services and resources provided by participating exhibitors.</p>
4:55 p.m.	<p><b>Day One Closing Remarks</b></p> <p><i>4:55 p.m. - 5:00 p.m. MDT</i></p>
5:00 p.m.	<p><b>30-Minute Break</b></p>

	<i>5:00 p.m. - 5:30 p.m. MDT</i>
<b>5:30 p.m.</b>	<b>Exhibitor's Networking Social</b> <i>5:30 p.m. - 7:00 p.m. MDT</i> Complimentary Hors D'oeuvres and two-complimentary drinks; additional cash bar available

## Conference Day 2: Thursday, April 11, 2024

Conference Day 2: Thursday, April 11, 2024 <i>*Times are subject to change*</i>	
7:30 a.m.	<b>Breakfast</b>  7:30 a.m. - 8:00 a.m. MDT
8:00 a.m.	<b>Welcome and Hummingly Workshop</b>  8:00 a.m. - 9:10 a.m. MDT   Jolie Wills
9:10 a.m.	<b>30-Minute Break</b>  9:10 a.m. - 9:40 a.m. MDT
9:40 a.m.	<b>Access and Functional Needs Recognitions</b>  9:40 a.m. - 10:10 a.m. MDT
10:10 a.m.	<b>Presentation: CMIST Response Team Overview Training</b>  10:10 a.m. - 10:40 a.m. MDT   Sadie Martinez, Hannah Hoffmann, Tim Mann  The Colorado Division of Homeland Security and Emergency Management Access and Functional Needs Program is working to support the development of local CMIST Response Teams around the state. This overview will look at CMIST Response Team areas of concentration and provide insights into how these teams will benefit local communities.
10:40 a.m.	<b>Presentation Q&amp;A / Optional Break &amp; Refreshments</b>  10:40 a.m. - 11:10 a.m. MDT  Presenters will answer questions from the audience during this optional break time. Refreshments will be provided.
11:10 a.m.	<b>Panel: Lessons to Apply from Disasters: CMIST Focus</b>  11:10 a.m. - 12:10 p.m. MDT   Veronica Moody (Moderator), Joycelyn Fankhouser, Kasey Harlos, Loni Koller, Diane Elio, Jaclyn Kurle, Mike Houston, Curt Garrett, Sheri Meyer, Aimee Voth Siebert, Sadie Martinez  Join partners from across Colorado and the nation to discuss how to take lessons learned from disasters and exercises, and turn them into lessons applied through the continuous improvement of emergency plans. We will be using the CMIST Resource Memory Tool to frame these lessons in practical steps for improving emergency plans in your communities.
12:10 p.m.	<b>Closing Remarks</b>

	<p>12:10 p.m. - 12:30 p.m. MDT   <i>Mike Willis, Sadie Martinez, Hannah Hoffmann, Tim Mann</i></p>
12:30 p.m.	<p><b>Lunch</b></p> <p>12:30 p.m. - 1:00 p.m. MDT</p>
1:00 p.m.	<p><b>[CHANGED]</b></p> <p><b>Post-Conference: TVU Demonstration</b></p> <p>1:00 p.m. - 2:30 p.m. MDT   <i>Micki Trost, Sadie Martinez, Hannah Hoffmann, Tim Mann</i></p> <p>A live demonstration of how the Colorado TVU system resource can bridge the gap between emergency management communications and broadcasters to ensure equitable communication to community members. Come learn what the support service resource is, how to request it, the history, and interact with the product.</p>

---

## Speakers



**Aimee Voth Siebert, M.A.** | Disaster Behavioral Health and Inclusion Program Manager, Colorado Office of Emergency Preparedness and Response, Colorado Department of Public Health and Environment

*Aimee Voth Siebert is the Disaster Behavioral Health and Inclusion Program Manager for CDPHE's Office of Emergency Preparedness and Response (OEPR). Aimee holds a Masters in International Disaster Psychology from the University of Denver and has grown multi-disciplinary emergency knowledge and experience in both domestic and international settings. Aimee promotes a people-centered and adaptive functioning lens for emergency planning and response. Following the passage of House Bill 21-1281 to establish state funding for disaster behavioral health, she led the rule-writing and program design for Colorado's Disaster Behavioral Health capacity building program. Aimee also contributes leadership to the development of Colorado's Access & Functional Needs Program. She offers training in disaster behavioral health, access & functional needs, community inclusion, and crisis communications. She is certified as a State Crisis Counseling Program trainer and grant writer, a CDC Crisis and Emergency Risk Communication Trainer, a Strategies for Trauma Awareness & Resilience Practitioner and an Advanced Public Information Officer.*



**Alexandra Enders** | Disability Integration Advisor

*Most recently a FEMA Disability Integration Advisor, Alexandra's first disaster work was during 1989-90 Armenia earthquake recovery. In between she has done national studies on issues such as transportation and telecommunication; often using geospatial analysis to explore the relationship of environmental factors and access and functional needs. She has been involved with service delivery systems and networks, public policy, funding and quality assurance issues, program development and training activities, information services, and technology evaluation and effectiveness studies, at the University of Montana Rural Institute on Disabilities, the Electronic Industries Foundation in Washington, D.C., the Rehabilitation Engineering Center at Children's Hospital at Stanford, and the first Center for Independent Living in Berkeley, California. She has a long time interest in universal design, self help tools and technology, accessible media, and integrated approaches to dissemination. She was the first woman president of RESNA, the Rehabilitation Engineering and Assistive Technology Association of North America.*





**Allison Wilson** | Strategic Initiatives Coordinator, MPH, CLC, AFN in Emergency Preparedness, Jefferson County Public Health

*Allison Wilson is a Strategic Initiatives Coordinator with Jefferson County Public Health's Emergency Preparedness (EPR) Team. She oversees cross-collaborative AFN, EPR and maternal child health projects. This includes the Safe Infant and Young Child Feeding in Emergencies project and its expansion over the last three years as a statewide Mission Ready Package with Rocky Mountain Medical Reserve Corps. Allison has facilitated a variety of local, state and national grant awards in her career, most recently from NACCHO (National Association of City and County Health Officials) on embedding Access and Functional Needs into emergency plans and all-staff trainings. Allison holds an MPH degree from Missouri State University and has worked in the public health field for 16 years.*



**Andrew Notbohm** | Director, Pikes Peak Regional Office of Emergency Management



**Charlotte Olsen** | Administration for Children and Families, U.S. Department of Health and Human Services



**Christe Coleman, CEM** | Regional Field Manager - South, Colorado Division of Homeland Security and Emergency Management



**Curtis Garrett** | Disaster Preparedness Coordinator, Atlantis Community, Inc.



**Desiree Baccus** | Chief Marketing Officer, Rocky Mountain Ham Radio

*Desiree Baccus, N3DEZ, is a dedicated technology evangelist and emergency management professional passionate about amateur radio. She has worked for NASA for over 15 years, and served in their Disaster Assistance and Rescue Team (DART) Team, and is a member of the Colorado Federal Executive Board (CFEB) Emergency Preparedness Council (EPC), where she works toward enhancing emergency response capabilities throughout Colorado. She has many roles in amateur radio public relations groups, such as ARRL's Public Relations Committee (PRC) and Rocky Mountain Ham Radio (RMHAM), highlighting her expertise and dedication to the opportunity, resources, and responsiveness within amateur radio communications.*



**Diane Elio** | Critical Incidents Manager, Colorado Department of Human Services

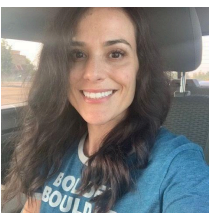
*Diane Elio is the Critical Incident Manager for the State of Colorado Department of Human Services and is the backup for the Department's Emergency Support Function 6. Diane has been part of disaster recovery in Colorado and Texas for the last eleven years. She first served as the Emergency Assistance and Disaster Recovery Manager for Catholic Charities of Denver in response to the 2013 Colorado floods. Additionally, she acted as the Reporting and Compliance Manager for Catholic Charities USA in support of "Project Comeback TEXAS", a federally funded disaster case management program for survivors of Hurricane Harvey. Diane was raised in Colorado and attended the University of Northern Colorado. She received her Masters Degree in Nonprofit Management from Regis University. She enjoys spending her free time with family.*



**Hannah Hoffmann** | Whole Community Inclusion Planning Specialist, Colorado Division of Homeland Security and Emergency Management



**Heather Lafferty** | Diversity, Equity, and Inclusion / Access and Functional Needs (DEI/AFN) Coordinator, Nevada Division of Emergency Management / Homeland Security



**Jaclyn Kurle** | Emergency Manager / Emergency Support Function 6, Colorado Department of Human Services



**Jacquelyn Stanton** | Equity, Diversity, and Inclusion Coordinator, Colorado Department of Local Affairs



**Jill Pidcock** | West Mountain Regional Communities Organizations Active in Disaster (WMR COAD) - Co Chair, Executive Director, The Arc of the Central Mountains



**Joycelyn Fankhouser, CO-CEM** | Disaster Manager/Coordinator, Boulder County Housing and Human Services

*Joycelyn brought her 20 years of social work experience to the Boulder County Emergency Manager position in 2016. Prior to that as the Flood Recovery Coordinator for Boulder County Housing Human Services she led the case management for the 2013 flood. Joycelyn's focus is Mass Care, Volunteer Engagement, Donation Management and Disaster Assistance Centers in Boulder County, Colorado. She helped develop the Mass Fatality Plan with the Boulder Office of Disaster Management, specifically the Community Assistance Center Plan. She brings her passion in recovery and planning by co-chairing the NCR Recovery Committee since 2018. She's a board member of the Women in Leadership Program at the University of Colorado, Colorado Springs, is a member of the Boulder IMT, has written and received Federal grants for sheltering and speaks passionately about the Emergency Manager/Human Service Department interface.*

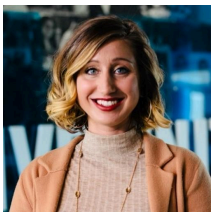


**Julia Beems, MA** | Senior Research Instructor, Emergency Preparedness Program Coordinator, and Assistive Technology Program of Colorado Outreach Coordinator, Center for Inclusive Design and Engineering, University of Colorado Denver



**June Isaacson Kailes | Disability Policy Consultant**

*June Isaacson Kailes ([www.jik.com](http://www.jik.com)) owns a disability policy consulting practice and is a pioneer, leader, and innovator in health care, emergency management, aging with disability, stakeholder engagement, and hospitality. The breadth and depth of her experience in disability, accessibility, and functional needs issues are widely known and respected as a writer, trainer, researcher, policy analyst, subject matter expert, and advocate. June concentrates on replacing the ambiguous aspects of disability etiquette, sensitivity, awareness, and legal compliance with maximum impact, practices, and measurable skill sets. June works with clients to build critical disability competencies and capabilities. She translates the laws and regulations into clear, actionable, detailed, and sustainable building blocks and tools that close service gaps, prevent civil rights violations, and remove barriers, inequities, and disparities. June uses the “how, who, what, where, when, and why, to get physical, programmatic, communication, and equipment access right! June has received many honors and awards, has delivered hundreds of keynote addresses, workshops, and seminars, and has over 200 publications.*



**Kasey Harlos | Senior Director, 211 and Disaster Response, Mile High United Way**

*Kasey Harlos is a Texas native with 9+ years of experience in community development, resource development, and project and volunteer management through nonprofit and government sectors. She holds a bachelor's degree in communication, marketing and advertisement and has served in the Peace Corps. Today, Kasey serves as the Senior Director of 211 & Disaster Response for Mile High United Way. She develops and implement long term strategies across various work streams, facilitates the growth of partnerships, and further develops resources including funding, supplies, and volunteer supports to ensure Mile High United Way and 211 Colorado are prepared and continue to do their best to serve and support communities across the State of Colorado when they need help the most. Kasey is the current Chairperson of Colorado's Voluntary Organizations Active in Disaster (COVOAD), and a recent graduate of the Denver Metro Chamber Leadership Foundations' 2023 Leadership Fellows program.*



**Loni Koller | Disability Integration, Southwest and Rocky Mountain Division, American Red Cross**

*Loni Koller is the National Volunteer Partner for the American Red Cross Disaster Disability Integration program and has been a Red Cross volunteer since 2018. She has deployed to over 17 disaster responses throughout the United States and Guam. Her leadership skills on the most complex Red Cross disaster relief operations have fostered equal access and inclusion for a diverse group of people with*

*disabilities. Recently deployed to the Maui Wildfires, she and her team worked with clients, disability stakeholders, and other community partners to support clients during one of the largest non-congregate sheltering operations in recent history. As the Disaster Disability Integration National Volunteer Partner, Loni looks forward to the reboot of the program and building an environment of collaboration and unity between Red Cross Disaster Cycle Services and the disability community.*



**Luke Adams** | Outreach and Consultative Services Specialist, Colorado Commission for the Deaf, Hard of Hearing, and Deafblind



**Michael Houston** | Regional Disability Integration Specialist, FEMA Region 8, Federal Emergency Management Agency

*Michael is the Regional Disability Integration Specialist (RDIS) for FEMA Region 8 based in Denver, Colorado. Prior to taking this RDIS position, Michael was the Disability Integration Advisor for one of 3 National Incident Management Assistance Team (IMAT) based in the National Capitol Region (Northern Virginia) and was the Regional Disability Integration Specialist for FEMA Region 4, based in Atlanta, Georgia. Michael is legally deaf as a result of suffering an injury as a child, and he is a Child of a Deaf Adults (CODA) and is fluent in American Sign Language.*



**Micki Trost** | Strategic Communications Director / Public Information Officer, Colorado Division of Homeland Security and Emergency Management



**Mike Willis** | Director, Office of Emergency Management, Colorado Division of Homeland Security and Emergency Management





**Mykel Kroll** | Director of Emergency Management and Public Information Officer, Fremont County

*Mykel has served as the Fremont County Director of Emergency Management and public information officer for the past six years and assists regional and county partners in planning for, preventing, mitigating, responding to, and recovering from all-hazard events. Mykel is also a 17-year firefighter and treasurer for the Canon City Volunteer Fire Department, and a member of the South All-Hazards Region Comms Committee that creates and facilitates regional exercises to improve local and regional communications. These roles give him great local knowledge and experience in community engagement, and he prides himself on the relationships he has with his local stakeholders.*



**Nancy Dragani** | Regional Administrator, FEMA Region 8, Federal Emergency Management Agency

*Nancy Dragani is the Regional Administrator for FEMA Region 8. Ms. Dragani leads and coordinates all activities in support of FEMA's mission with the states of Colorado, Montana, North Dakota, South Dakota, Utah and Wyoming, as well as the 29 federally recognized tribes within the region. Ms. Dragani joined FEMA and was appointed as the FEMA Region 8 Deputy Regional Administrator in January 2016 before going on to serve multiple times as the Acting Regional Administrator. Prior to joining FEMA, Ms. Dragani worked for the Ohio Emergency Management Agency for 20 years, where she was the Executive Director from 2005 to 2014. In 2004, Ms. Dragani retired from the Ohio National Guard with 22 years of combined U.S. Army, Army National Guard, and Air National Guard service. In addition to her roles in state and federal government, Ms. Dragani has served on FEMA's National Advisory Council and the Memorial Institute for the Prevention of Terrorism Advisory Board. She also held the position of President of the National Emergency Management Association (NEMA) from 2008 to 2009 and was the 2014 recipient of NEMA's Lacy E. Suiter Distinguished Service Award, an award given annually to an individual who has made outstanding contributions to emergency management. Ms. Dragani has a Master of Arts degree from the Naval Postgraduate School's Center for Homeland Defense and Security and a Bachelor of Arts degree from Ohio Dominican College where she graduated Summa Cum Laude.*



**Rob Crowder** | Emergency Manager, Sedgwick County

*Rob was appointed Sedgwick County Emergency Manager in January 2018. In his 7 years with Sedgwick County OEM he has worked closely with county departments and first response agencies to rebuild and rejuvenate the local ESF-8 (public health), MACG, and LEPC groups with an emphasis on whole community*

*planning and emergency preparedness. In his time as emergency manager, Sedgwick County has been subject to many events including blizzards, wildfires, an anthrax outbreak in cattle, COVID-19, HPAI, flooding, and severe drought. All of these events have had unique response and planning requirements and have been excellent learning opportunities, particularly around mass care and sheltering.*



**Sadie Martinez** | Access and Functional Needs Coordinator, Colorado Division of Homeland Security and Emergency Management

*Sadie Martinez is the Colorado State Division of Homeland Security and Emergency Management's (DHSEM) Access and Functional Needs Coordinator. Her role focuses on coordinating the development and operations of a statewide network of local partners focusing on Access and Functional Needs integration emergency planning. She supports state agencies and local jurisdictions in the development of inclusive, whole community emergency operations plans that adequately account for people with Access and Functional Needs, emergency preparedness workshops and serves as the Access and Functional Needs subject matter expert during state-level planning initiatives. Sadie is using the Access and Functional Needs Framework using the CMIST memory tool to support whole community inclusion in emergency management lifecycle resource planning in the functional needs of Communications, Maintain Health, Independence, Safety, Support Services, Self-Determination, and Transportation from a resource standpoint, rather than a special need or vulnerability. Helping Colorado emergency managers better understand what capabilities to acquire before, during, and after a disaster by approaching Access & Functional Needs from a resource perspective.*



**Shaylin Sluzalis and Germán Parodi** | Co-Executive Directors, The Partnership for Inclusive Disaster Strategies

*Shaylin Sluzalis (she/her) and Germán Parodi (he/him) are the Co-Executive Directors of The Partnership for Inclusive Disaster Strategies - the U.S. Disability and Disaster Hub, led by and for Disabled people throughout disasters. They both come from independent living and disability rights backgrounds, and are both persons with disabilities. Both their experiences led them to be powerful advocates and activists. Shaylin and Germán's journey responding to disasters and emergencies began in 2017 when they were deployed to Puerto Rico following Hurricane Maria as disabled first responders meeting the needs of disaster-impacted people with disabilities. Which now fuels their dedicated and focused work in inclusive emergency management and community resilience.*



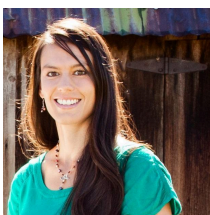
**Sherman Gillums Jr., Ed.D.,** | Director, Office of Disability Integration and Coordination, Federal Emergency Management Agency

*Sherman Gillums, Jr., Ed.D, a native of Buffalo, New York, serves as FEMA's disability coordinator and the director of its Office of Disability Integration and Coordination (ODIC), located in the agency's Washington D.C. headquarters. In his role, Sherman advises FEMA Administrator Criswell on meeting the agency's commitment to equity in emergency management for people with disabilities, including older adults and others with access and functional needs. Within seven months of joining FEMA in August 2022, Sherman deployed to response operations for hurricanes Ian and Fiona, deadly tornados in Alabama and Mississippi, and served as the Agency's lead advisor on disability integration after a train derailment in East Palestine, Ohio. In March 2023, Sherman released to the FEMA workforce his Director's Intent, "A Guide to Meeting the Disability Integration Mission". The vision focuses on 14 potential points of inequity that can substantially extend the disaster lifecycle for people with disabilities and older adults.*



**Stephanie Hackett, CEM, MA, MSW** | Emergency Management Coordinator, City of Brighton/Brighton Fire Rescue District

*Stephanie Hackett, CEM, MSW, MA, is the Emergency Management Coordinator for the City of Brighton and the Brighton Fire Rescue District. Ms. Hackett has an MSW in Community Practice Social Work and an MA in International Security and is an Internationally Certified Emergency Manager (CEM). She started working in emergency management with the Jefferson County's Office of Emergency Management in 2005, working specifically with facilities and vulnerable populations on emergency planning, training and resourcing. Stephanie continued working with communities, volunteers and public education for the City of Aurora developing emergency plans and response capabilities within the city. Currently, in her capacity as the Emergency Manager in Brighton, Stephanie facilitates emergency planning, response, training and educational efforts among government entities and whole community partners including local emergency planners, first responders, local advocates and volunteers around the Denver metro area. She develops and manages the Brighton Emergency Operations Center, serves as a coordinator for the Community Emergency Response Team (CERT), and has worked on numerous local and national level disasters.*



**Teresa Bagdol** | Risk Specialist, Southern Ute Indian Tribe

*Teresa currently works for the Southern Ute Indian Tribe as a Risk Specialist. Mainly handling insurance claims, she also dabbles in health & safety as well as emergency management. She has worked for the Southern Ute Indian Tribe for about 12 years in a variety of capacities. She holds a BS in Environmental Health from Colorado State University and was born and raised in the Ignacio, CO area. Her native tribe is Navajo, and she is also of Spanish and Caucasian descent. A wife and mother of four children Teresa claims, "she became an Emergency Manager when she started having kids." However, she is learning that life is NOT an emergency - it just has urgencies at different times. Lastly, she is a proud graduate of the Colorado Basic and Advanced Academy for Professional Emergency Managers.*





**Tim Mann** | Whole Community Inclusion Planning Specialist, Colorado Division of Homeland Security and Emergency Management



**Valerie Haven** | Agency Owner, Redefining Bravery



**Veronica Moody** | Emergency Preparedness and Response Planner, MoodyWorks32 LLC

*Veronica Moody is a seasoned professional with over 30 years of experience in public health and emergency preparedness and response. With a background deeply rooted in service, Veronica began her career in the United States Air Force as a Public Health Craftsman, where she was entrusted with overseeing a wide array of public health activities and programs. Following her service in the Air Force, Veronica transitioned to roles in the civilian sector, including positions at Battelle Memorial Institute as an Analyst assigned to Buckley AFB CO 460th Medical Group and Department of Homeland Security, Office of Health Affairs in Washington DC. Veronica's commitment to public health emergency preparedness and response continued as she assumed the role of a Public Health Emergency Preparedness Planner at Tri-County Health Department in Colorado, where she focused on mass prophylaxis and ensuring access and functional needs were addressed in emergency plans. In addition to her professional endeavors, Veronica has been actively involved in volunteer roles, serving as Executive Director and Unit Coordinator for the Rocky Mountain Medical Reserve Corps (MRC) of Colorado, member of the Douglas County Emergency Operations Center (EOC) Logistics Team, and member of multiple workgroups within the National Association of City & County Health Officials (NACCHO).*

---

## Sponsors



**The Arc**

*of the Central Mountains*

The Arc Central Mountains | [Website](#)



**The Arc**

*Pikes Peak Region*

The Arc Pikes Peak Region | [Website](#)



**COLORADO**

**Office of Adult, Aging &  
Disability Services**

Department of Human Services

Colorado Department of Human Services, State Unit on Aging | [Website](#)



**GABLEHOUSE GRANBERG, LLC**

Attorneys at Law

Gablehouse Granberg, LLC



**ReachWell**

Connecting communities for good.

ReachWell | [Website](#)

---

## Exhibitors



Aftersight (formerly Audio Information Network of Colorado)



**American Red Cross**  
Colorado & Wyoming Region

American Red Cross, Colorado and Wyoming Region



Center for Inclusive Design and Engineering (CIDE)  
COLLEGE OF ENGINEERING, DESIGN AND COMPUTING  
UNIVERSITY OF COLORADO DENVER | ANSCHUTZ MEDICAL CAMPUS

Center for Inclusive Design and Engineering (CIDE), University of Colorado Denver



**COLORADO**  
Commission for the Deaf,  
Hard of Hearing, and DeafBlind

Colorado Commission for the Deaf, Hard of Hearing and DeafBlind (CCDHHDB)



**COLORADO**  
Department of Public  
Health & Environment

Colorado Office of Emergency Preparedness and Response, Colorado Division of Public Health and Environment (CDPHE)



Colorado  
Voluntary Organizations  
Active in Disaster

Colorado Voluntary Organizations Active in Disasters (COVOAD)



Grand Canyon University

MONICA GILLIAM PHOTOGRAPHY

# PROFESSIONAL *Headshots*



Date:

April 10, 2024

Time:

10:00am - 5:00pm

Recommended donation = \$20

No scheduled appointment necessary, just come to the designated area when you have time during the day, between 10:00am and 5:00pm. Your headshot will be emailed to you within 4 days after the conference. Please email or call if you have any questions at all.

*See you there!*



423-326-4747



[www.monicagilliam.com](http://www.monicagilliam.com)

[monicagilliamphotography@gmail.com](mailto:monicagilliamphotography@gmail.com)



Natively Fluent



Rocky Mountain ADA Center



Rocky Mountain Ham Radio | [Website](#)



Rocky Mountain Medical Reserve Corps



sComm



WellPower | Jasmine Breeden & Melissa Zotara