



LSQ-40L
LABEL PRINTING SCALE



QUICK START
MANUAL

REV 1.0

LSQ-40L LABEL PRINTING SCALE

QUICK START MANUAL

REV 1.0

INDEX

Before you begin.....	2
Cleaning the scale	
Requirements for using a computer to program	
Setting up scale for first use.....	4
Testing printer	
Printing your first label.....	5
Setting up the network.....	6
Connecting the devices	
Installing the software	
Configuring you computer	
Configuring your scale(s).....	7
Starting up the software.....	8
Adding scales to the network	
Configuring general information.....	9
Adding products.....	10
Moving products to/from scale.....	11
Access Direct	
General configuration.....	12
Bar code setup	
Printed text on labels.....	13
Headlines	
Passwords	
Programming using the keyboards.....	14
Entering store information	
Edit scrolling message.....	15
Configuration.....	16
Setting up label print.....	17
Setting up bar code	
Placing text on label.....	18
Set up text on label.....	19
Add plu's.....	20
Key assignation	
Troubleshooting.....	22

begin.....	2	Cleaning the scale Requirements for using a computer to program
Setting up scale for first use.....	4	Testing printer
Printing your first label.....	5	
Setting up the network.....	6	Connecting the devices Installing the software
Configuring you computer		
Configuring your scale(s).....	7	
Starting up the software.....	8	Adding scales to the network
Configuring general information.....	9	
Adding products.....	10	
Moving products to/from scale.....	11	Access Direct
General configuration.....	12	Bar code setup
Printed text on labels.....	13	Headlines Passwords
Programming using the keyboards.....	14	Entering store information
Edit scrolling message.....	15	
Configuration.....	16	
Setting up label print.....	17	Setting up bar code
Placing text on label.....	18	
Set up text on label.....	19	
Add plu's.....	20	Key assignation
Troubleshooting.....	22	

BEFORE YOU BEGIN

Please read this section carefully. The following has some important safeguards to prevent damage or failure of your scale.

CLEANING THE SCALE:

- 1). You may use stainless cleaner or mild soap to wipe down the metal areas of the scale. The keyboards and display should be wiped down with a damp cloth only. While the keyboards and display are reasonably sealed, do not allow liquids to get between the plastic surfaces and the metal.
- 2). Use only the supplied cleaning kit to clean the print head. Do not use sharp objects around the print head or the pinch roller below it. Damaging these parts will cause your label printouts to be unreadable or you may even cause internal damage to the scale.
- 3). Do not immerse the power supply in water. This will cause possible electrical shock and failure of the adapter. Unplug adapter from power and wipe down with a damp cloth. Do not spray the adapter with cleaning fluids.
- 4). Keep the print cartridge area clean of any food or other debris. If contaminants are picked up by the labels and brought across the print head, it can cause labels to print poorly. This can also damage the print head.

COMMUNICATIONS WITH THE SCALE:

If you are going to program your scale using a personal computer, here are a few things you will need.

- 1). You will need to purchase a network adapter (hub) and two (2) category 5 cables. These can be purchased from electronics or department stores that sell computer equipment. A network adapter allows you to plug your computer and scale(s) into one hub. NOTE: You cannot plug the scale directly into your computer. Being your scale is actually a computer; all computers that communicate with each other require a network adapter to control data flow between machines.

BEGIN

Please read this section carefully. The following has some important safeguards to prevent damage or failure of your scale.

CLEANING THE SCALE:

- 1). You may use stainless cleaner or mild soap to wipe down the metal areas of the scale. The keyboards and display should be wiped down with a damp cloth only. While the keyboards and display are reasonably sealed, do not allow liquids to get between the plastic surfaces and the metal.**
- 2). Use only the supplied cleaning kit to clean the print head. Do not use sharp objects around the print head or the pinch roller below it. Damaging these parts will cause your label printouts to be unreadable or you may even cause internal damage to the scale.**
- 3). Do not immerse the power supply in water. This will cause possible electrical shock and failure of the adapter. Unplug adapter from power and wipe down with a damp cloth. Do not spray the adapter with cleaning fluids.**
- 4). Keep the print cartridge area clean of any food or other debris. If contaminants are picked up by the labels and brought across the print head, it can cause labels to print poorly. This can also damage the print head.**

COMMUNICATIONS WITH THE SCALE:

If you are going to program your scale using a personal computer, here are a few things you will need.

- 1). You will need to purchase a network adapter (hub) and two (2) category 5 cables. These can be purchased from electronics or department stores that sell computer equipment. A network adapter allows you to plug your computer and scale(s) into one hub. NOTE: You cannot plug the scale directly into your computer. Being your scale is actually a computer; all computers that communicate with each other require a network adapter to control data flow between machines.**



Network Adapter with category 5 cables

The picture above shows an example of a 5 port hub. One computer and up to 4 scales can be connected for programming.

NOTE: It is not necessary to have a computer to program your scale. Programming can be done by using the keyboard on the scale. However, it is much easier to program using a computer especially if you have more than one scale.

A few other advantages of using a computer are:

- 1). Information can be saved to your hard drive or other backup device.
- 2). You can communicate to the scales from a remote location such as a back office. You would not have to go to the machine or move it to program/update.
- 3). You can generate reports from the scale and print them without interrupting normal operations of the day.

The picture above shows an example of a 5 port hub. One computer and up to 4 scales can be connected for programming.

NOTE: It is not necessary to have a computer to program your scale. Programming can be done by using the keyboard on the scale. However, it is much easier to program using a computer especially if you have more than one scale.

A few other advantages of using a computer are:

- 1). Information can be saved to your hard drive or other backup device.**
- 2). You can communicate to the scales from a remote location such as a back office. You would not have to go to the machine or move it to program/update.**
- 3). You can generate reports from the scale and print them without interrupting normal operations of the day.**

SETTING UP THE SCALE FOR FIRST TIME

- 1). Carefully unpack scale from its box. Lift the indicators arm all the way up until it stops. Adjust the correct angle of the indicator by loosening the black nut on the arm next to the indicator. Move the indicator to the correct angle and then tighten the nut. DO NOT over tighten.
- 2). Plug in the ac adapter to the wall socket and the other end into the scale. The connector may appear tight on a new scale. You might try twisting the connector as you are pushing it into the scales receptacle.
- 3). Turn on the scale. It should do a regressive countdown, then a label should dispense. If the scale does not turn on, try twisting the connector again while leaving the switch in the on position.

QUICK TEST OF THE PRINTER:

- 1). Remove the template from the main keyboard. There is a tab on the left side so it can be pulled out. This exposes the programming keyboard.
- 2). Find the key(s) that came with the scale. Insert the key into the lock on the bottom right of the scale. Turn it right 90 degrees.
- 3). The indicator should display PWD? Press the PRINT key. The scrolling message should say PROGRAMMING MODE.
- 4). On the programming keyboard, press CONFIG. Using the arrow down button, scroll down until it says MODE.
- 5). Press ENTER. The indicator should say AGENTS. Press ENTER.
- 6). Arrow up/dn until you see DISABLE. Press ENTER.
- 7). Arrow down until you see NON PLU. Press ENTER.
- 8). Arrow up/dn until you see ENABLE. Press ENTER.
- 9). Press ESC on the small keyboard until the scrolling message says PROGRAMMING MODE again. Turn the key to the left and remove it.

SETTING UP THE SCALE FOR FIRST TIME

- 1). Carefully unpack scale from its box. Lift the indicators arm all the way up until it stops. Adjust the correct angle of the indicator by loosening the black nut on the arm next to the indicator. Move the indicator to the correct angle and then tighten the nut. DO NOT over tighten.**
- 2). Plug in the ac adapter to the wall socket and the other end into the scale. The connector may appear tight on a new scale. You might try twisting the connector as you are pushing it into the scales receptacle.**
- 3). Turn on the scale. It should do a regressive countdown, then a label should dispense. If the scale does not turn on, try twisting the connector again while leaving the switch in the on position.**

QUICK TEST OF THE PRINTER:

- 1). Remove the template from the main keyboard. There is a tab on the left side so it can be pulled out. This exposes the programming keyboard.**
- 2). Find the key(s) that came with the scale. Insert the key into the lock on the bottom right of the scale. Turn it right 90 degrees.**
- 3). The indicator should display PWD? Press the PRINT key. The scrolling message should say PROGRAMMING MODE.**
- 4). On the programming keyboard, press CONFIG. Using the arrow down button, scroll down until it says MODE.**
- 5). Press ENTER. The indicator should say AGENTS. Press ENTER.**
- 6). Arrow up/dn until you see DISABLE. Press ENTER.**
- 7). Arrow down until you see NON PLU. Press ENTER.**
- 8). Arrow up/dn until you see ENABLE. Press ENTER.**
- 9). Press ESC on the small keyboard until the scrolling message says PROGRAMMING MODE again. Turn the key to the left and remove it.**

TO PRINT A LABEL (continued):

1). Place a product on the platter. Enter in the price. Press PRINT.

A label should dispense with printed information such as weight, date, total sale, etc.

NOTE: The printer will not print a label if no price is entered, no weight is on the platter or negative weight is displayed on the indicator. Repeat steps on page 5 if no label comes out.

****CONGRADULATIONS!!** You have just printed your first label.**

TO PRINT A LABEL (continued):

1). Place a product on the platter. Enter in the price. Press PRINT.

A label should dispense with printed information such as weight, date, total sale, etc.

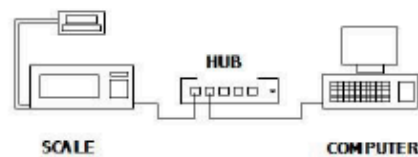
NOTE: The printer will not print a label if no price is entered, no weight is on the platter or negative weight is displayed on the indicator. Repeat steps on page 5 if no label comes out.

****CONGRADULATIONS!!** You have just printed your first label.**

SETTING UP THE NETWORK

(Skip this part if not using a computer)

- 1). Connect up the equipment as shown in the drawing below.



- 2). Place the Scalenet (LSQ-40L) software CD in your drive. The auto install should begin automatically. Complete the installation as instructed.

NOTE: This software is intended to run on a Windows XP operating system with SP2 (Service Pack 2) installed only.

CONFIGURING YOUR NETWORK ON YOUR COMPUTER:

- 1). Click on START, and then NETWORK CONNECTIONS.
- 2). Click on LOCAL AREA NETWORK.
- 3). Click on PROPERTIES.
- 4). Scroll down on window and click ONCE on INTERNET PROTOCOL TCP/IP.
- 5). Click on PROPERTIES.
- 6). Click on MANUALLY ENTER IP ADDRESS.
- 7). Enter in the IP address 131.1.100.100. Click OK.

SETTING UP THE NETWORK (Skip this part if not using a computer)

- 1). Connect up the equipment as shown in the drawing below.**
- 2). Place the Scalenet (LSQ-40L) software CD in your drive. The auto install should begin automatically. Complete the installation as instructed.**

NOTE: This software is intended to run on a Windows XP operating system with SP2 (Service Pack 2) installed only.

CONFIGURING YOUR NETWORK ON YOUR COMPUTER:

- 1). Click on START, and then NETWORK CONNECTIONS.**
- 2). Click on LOCAL AREA NETWORK.**
- 3). Click on PROPERTIES.**
- 4). Scroll down on window and click ONCE on INTERNET PROTOCOL TCP/IP.**
- 5). Click on PROPERTIES.**
- 6). Click on MANUALLY ENTER IP ADDRESS.**
- 7). Enter in the IP address 131.1.100.100. Click OK.**

SCH LE COM PUTER

NOTE: If you are already using a network connection for another application, you may want to create a new connection and configure it for scale communications.

CONFIGURING YOUR NETWORK ON THE SCALE:

The scales network IP address should already be configured from the factory. If you want to check it or if you are using more than one scale, follow the procedure below.

TO SEE/CHANGE SCALES IP ADDRESS:

- 1). If the scale is on, turn it off.
- 2). Turn on the scale. During the countdown, press and release the following keys in sequential order. Press X, +, and then AGENT before the countdown completes.
- 3). Display should go blank. Enter 2005 and press PRINT.
- 4). Press PRINT to scroll thru the address numbers. At any time you may change them by entering the new numbers. The first scales address should be 131.1.100.101.
- 5). Press ESC when complete.

If you are using more than one scale on the network, then each scale must have its own network address. EXAMPLE:

SCALE#1	131.1.100.101
SCALE#2	131.1.100.102
SCALE#3	131.1.100.103

NOTE: You should write down each address. You will need to type it in again later to add them to the network.

NOTE: If you are already using a network connection for another application, you may want to create a new connection and configure it for scale communications.

CONFIGURING YOUR NETWORK ON THE SCALE:

The scales network IP address should already be configured from the factory. If you want to check it or if you are using more than one scale, follow the procedure below.

TO SEE/CHANGE SCALES IP ADDRESS:

- 1). If the scale is on, turn it off.**
- 2). Turn on the scale. During the countdown, press and release the following keys in sequential order. Press X, +, and then AGENT before the countdown completes.**
- 3). Display should go blank. Enter 2005 and press PRINT.**
- 4). Press PRINT to scroll thru the address numbers. At any time you may change them by entering the new numbers. The first scales address should be 131.1.100.101.**
- 5). Press ESC when complete.**

If you are using more than one scale on the network, then each scale must have its own network address. EXAMPLE: SCALE#1 131.1.100.101 SCALE#2 131.1.100.102 SCALE#3 131.1.100.103

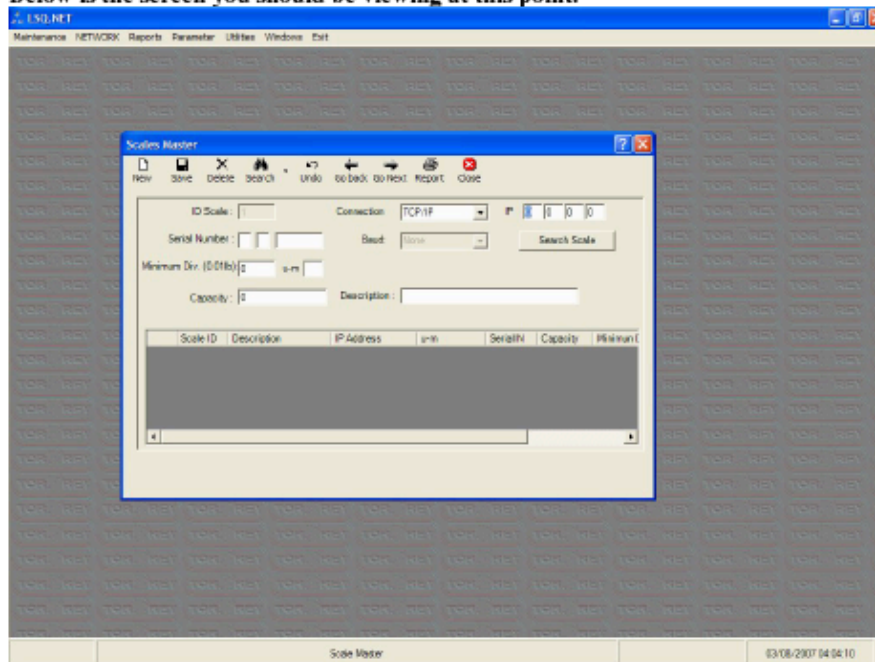
NOTE: You should write down each address. You will need to type it in again later to add them to the network.

STARTING UP THE LSQ-40L SOFTWARE

(Be sure your scale and hub are powered up and connected at this time)

1). Launch the LSQ-40L software. On the logon screen, do not enter a password. Click on ACCEPT to continue.

2). At the top of the screen, click on MAINTENANCE and then SCALE MASTER. Below is the screen you should be viewing at this point.



SCALE MASTER allows you to add new scales to the network. You will have to add each scale to the network one at a time. As long as you use the same computer each time you communicate to your network, you should not have to add them again.

TO ADD A NEW SCALE TO THE NETWORK:

1). Click on NEW.

STARTING UP THE LSQ-40L SOFTWARE

(Be sure your scale and hub are powered up and connected at this time)

1). Launch the LSQ-40L software. On the logon screen, do not enter a password. Click on ACCEPT to continue.

2). At the top of the screen, click on MAINTENANCE and then SCALE MASTER. Below is the screen you should be viewing at this point.

SCALE MASTER allows you to add new scales to the network. You will have to add each scale to the network one at a time. As long as you use the same computer each time you communicate to your network, you should not have to add them again.

TO ADD A NEW SCALE TO THE NETWORK:

1). Click on NEW.

2). Go to the first IP box and click in it. Enter the first number. Press TAB and enter the second number. Repeat for the last two numbers.

3). Click on SEARCH FOR SCALES. If the network detects the scale, it will ask you 'Do you want to add scale?'. Click YES.

4). The scales information should appear on the screen. If you have more than one scale, repeat step 1.

NOTE: If you get an Enable message, the network did not find the scale. Either you entered the wrong IP address, or the network is not configured correctly. If you have more than one network configured, you may have to disable the other networks.

CONFIGURE GENERAL PARAMETERS:

To set up for North America (USA) operations and currency, on the top of the screen click on PARAMETER and then SYSTEM COFIGURATION.

1). Under the COMPANY INFORMATION tab, enter your stores information.

2). Under the SYSTEM DATA tab, enter the following information:

Current Symbol = \$

Decimal Symbol = .

Decimal Number= 2

3). Click on SAVE the CLOSE.

2). Go to the first IP box and click in it. Enter the first number. Press TAB and enter the second number. Repeat for the last two numbers.

3). Click on SEARCH FOR SCALES. If the network detects the scale, it will ask you ‘Do you want to add scale?’. Click YES.

4). The scales information should appear on the screen. If you have more than one scale, repeat step 1.

NOTE: If you get an Enable message, the network did not find the scale. Either you entered the wrong IP address, or the network is not configured correctly. If you have more than one network configured, you may have to disable the other networks.

CONFIGURE GENERAL PARAMETERS:

To set up for North America (USA) operations and currency, on the top of the screen click on PARAMETER and then SYSTEM COFIGURATION.

1). Under the COMPANY INFORMATION tab, enter your stores information.

2). Under the SYSTEM DATA tab, enter the following information:

Current Symbol = \$ Decimal Symbol = . Decimal Number= 2 3). Click on SAVE the CLOSE.