

## *The Louise Dress*

The Louise dress is designed with Dress A Girl Around the World in mind. It is an Aline dress with a scooped neckline. Which can easily pull over the child's head. The dress also has a waistband that features sash carriers, roomy pockets with the option of grown on short sleeve or long sleeves. This dress has potential to be an everyday dress.



Sewing Skill Level \*\* (familiar with binding, gathering and some sewing terms)

\*\*Seam Allowance is 3/8 of an inch unless otherwise specified!!

The pattern consists of 7 pattern pieces. Size 10 only.

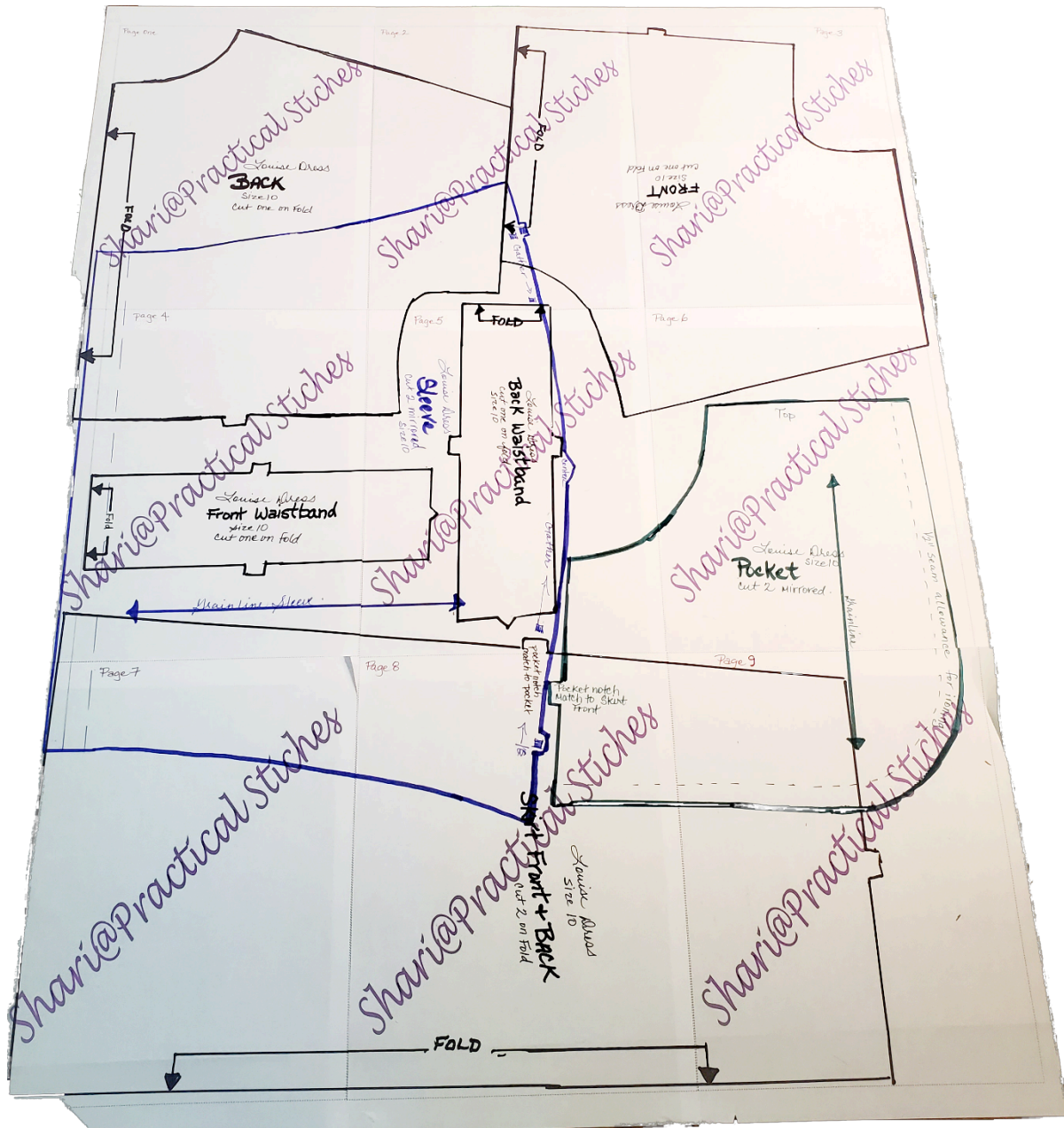
\*The seam allowance is included in this pattern. All directions are in imperial measurements.

~One bodice front ~ One bodice back ~ Skirt front and back ~ Front waistband ~ Back waistband  
~ Pocket & Long Sleeve ~ cutting instructions for the sash, sash carriers and binding is written in the directions below.

### Measurements

European	Size 10	finished garment measurements
Chest	27"	32"
Waist	23"	31"
Hip	29"	34"
Back length	13.2"	13.5"

## Map Of PDF print out 9 pages



### Further cutting instructions

\*Cut a 2.5" X 15" strip for sash carriers, cut strip 4" X 90" sash and cut approximately 1.5" X 70" Bias binding if you make your own! This is for the neckline and pocket opening plus short sleeve version. If making long sleeve version you will need Approximately 1.5" X 40" piece of bias binding.

You will need approximately 2.18 yards(2m) of 45" wide fabric and matching thread. You will also need matching / contrasting binding. It is more cost effective if you make your own cut out of leftover scraps. Also, some ¼- inch to 3/8- inch of elastic 16" for the long sleeve version.

### **Directions**

- o Take the strip of fabric 2.5" X 15" (sash carriers) and divide the long section into four. You should end up with four 2.5" X 3.75" pieces
  - o Take the 2.5" side & press 0.5" on either end of either side of all four pieces.
- o Turn the half inch over again and sew in place. You are finishing the end of each of the carriers
- o Then center the carriers over the notches on the waistband pieces front and back. Making sure raw edges of carriers meet raw edges on waistband. The carriers are 1/4" wider than the waistband. Baste in place. Set aside.
- o \*Tip do not get your waistband pieces mixed up there is a slight difference in each.
  - o Take your sash piece 4" X 90" and fold in half lengthwise right sides together. (folding the 4" inch in half along the 90" length)
  - o Start in the middle of sash, leaving at least a 4-inch opening, right sides together sewing 3/8 of an inch seam to about 2 inches from end of sash, pivot and sew at a 45-degree angle to the corner edge of sash. Trim and repeat, leaving an opening for turning, on other side.
  - o Turn sash and press
  - o Sew the opening closed start with a back stitch at beginning and end of opening about 1/8-inch seam allowance. Press and set aside
  - o Sew cut binding strips together and press seams open.
  - o Take pocket pieces and sew binding to pocket curve opening.
  - o Sew binding by taking right side of binding to wrong side of pocket, press, turn over and press by rolling binding to centre and press in place, turn binding again to cover previous stitching. Press, repeat to other pocket
  - o With large basting stitch, stitch ½ of an inch around outside curve of pocket to help guide pressing. To ease the curve of the pocket Stitch again close to the 0.5-inch seam line just along the curve. Pull the bobbin thread slightly to ease the curve to aid in pressing a nice rounded edge.

- o Press to the inside of pocket at ½” inch stitching line. Press just to stitching line so it is out of view.
- o Tip\* if you are going to add a label to your pocket now is the time!
- o Place pressed pocket to front of skirt. Wrong side of pocket to right side of skirt front. Line up the pocket edges to the side and top of skirt piece, the notches are for the waistband pieces, pin and top stitch into place. Repeat all steps for other pocket. Set skirt piece aside.
- o Sew prepared front and back waistband pieces to bodice front- and bodice back ~ line up notches. Right sides together Stitch using 3/8” seam allowance. Finish seam serge or zig zag.
- o Press seam down towards bottom of waistband.
- o Sew shoulder seams together of front and back bodices right sides together. Finish seam. Serge or zig zag
- o IF making short sleeve version finish sleeve edge by adding binding, lace or rolled hem on the flat.
- o Bind neckline. \*Tip do not stretch neckline or binding\* Place prepared binding right side to right side of bodice, start at the back centre by folding edge of binding ½ inch to wrong side of binding. Lay flat to centre back, sew 3/8 inch keeping bodice edges and binding even all the way around neckline. Sew binding at least ½ inch over starting point and backstitch. Cut excess binding off
- o Press seam towards binding and under stitch
- o Turn binding to inside of garment turn in edge of binding to meet edge of previous stitching. Pin in place and stitch. You will see binding on inside of garment and stitching line around neckline. Press
- o **LONG SLEEVE VERSION** Take sleeve pieces, baste stitch using half inch seam allowance top of sleeve between notches, baste stitch again using ¼” seam allowance along top of sleeve between notches (A double row of stitching for gathering top of sleeve).
- o Sew using ½ inch seam allowance to sew sleeve to grown on sleeve of bodice. Right side together matching edges of sleeve to edges of grown on short sleeve. Adjust gathers and make the sleeve fit.
- o Finish seam serge or zig zag
- o Press 1\4 inch up to wrong side of bottom of sleeve
- o Press up a half inch to wrong side of sleeve edge to create elastic casing

- o Stitch casing along pressed edge 1/8" away from folded edge creating a casing.
- o Insert elastic 8" through casing without twisting the elastic. Leave at least ½ inch of elastic out of each end and secure by tacking in place within the 3/8-inch seam allowance. Repeat all steps for other sleeve
- o Sew skirt front to bodice waistband front matching notches. Right side together. Backstitch over stress points at carriers and pocket points. Press seams up towards bodice and finish seam. Repeat same for back skirt piece.
- o Lay dress out right sides together, pin side seams matching seam intersections such as sleeve edges, sleeve underarm, waistband and skirt bottom. Use 3/8" of an inch seam allowance finish seam.
- o Tack sleeve at openings
- o Hem bottom of skirt allowing for ½ of inch hem.
- o Thread sash through carriers and tie a bow at either the front or the back.
- o I hope you enjoyed making this dress with me! If you have any questions, I will do my best to answer them. There is also a YouTube Tutorial on how to make this dress step by step. Happy Sewing!

### ***NOTES***


***Shari ~ Practical Stitches~ shari.dressagirl@gmail.com*** or  
shari@menzfabrics.ca