

Research Article

Paper Title (Capitalized Each Word, Segoe UI, 16pt)

First AUTHOR¹, Second AUTHOR², Third AUTHOR³ (Segoe UI, 11pt)

¹Affiliation, City, Country. ORCID (Segoe UI, 10pt)²Affiliation, City, Country. ORCiD (Segoe UI, 10pt)

✉ Corresponding Author: correspondence@mail.com

Received 01 January 2022

Revised 01 May 2022

Accepted 01 June 2022

Citation:

Author. (2022). Paper Title. Journal of Peat Science and Innovation, 1(1), pp1-10.

DOI:

[illegible]

Keywords: A maximum of 4-11 words, In alphabetical order, Separated by comma “,”



This is an open access article distributed under the Creative Commons 4.0 Attribution License, which permits unrestricted use, distribution, and reproduction in any medium, provided the original work is properly cited. ©2022 by author.

1. Introduction

This document is a Microsoft Word template. Please do not use other templates. The author(s) must strictly follow instructions so as to maintain the journal's high standard. The text must be typed in word format size A4 with a top, bottom, left, and right margin of 1 inch from the border. It should be typed in a single column and a double space. Segoe UI, point 10 for contents. The International System of Units (SI) is used for the metric system. Authors' full and last name. The middle name should be abbreviated to the initial letter accompanied by a full stop ". Join each author's name by the symbol "&" and the last author with "and". The pages should be numbered at the top right-hand corner consecutively. The manuscript has to be divided into three parts. The first part includes the title, name of the author, abstract, and keywords. The second part is the main body of the paper, which includes references and nomenclature. The body of the article may consist of the following sessions.

1. Introduction
2. Materials and methods
3. Results (Results and discussion can be written in one section or separately.)
4. Discussion
5. Conclusion
6. Ethical approval (if any)
7. Acknowledgements
8. Conflicts of interest
9. References

2. Methods

The second part consisting of the paper body must be edited in single-column format. Figures and tables should be located at the top or bottom of each page. Clear original figures in black and white are to be used. Equations should be numbered consecutively throughout the paper and located at the right margin as shown in Equation (1) below. Figures and tables should be placed at the top or at the bottom of each column as shown in Figure 1 and Table 1. The term "Table" should be followed by a bold typed number. Use the table function of Microsoft Word. Avoid vertical lines and unnecessary horizontal lines. The term "Figure" should be followed by a bold typed number. Symbols, nomenclatures, abbreviations, and units should match the figures and text used. The legends of the figure should not be more than 200 words. Composite figures should be used (A), (B), (C), etc., and the font Segoe UI to label must be shown on the top left of the figure.

Table 1. The euglenid species found in this study

No.	Family	Genus	Species	Sampling Site(s)*		
				Site 1	Site 2	Site 3
1	Euglenidae	<i>Euglena</i>	<i>E. acauda</i>	+	-	+
			<i>E. aculeata</i>	+	-	-
			<i>E. acutata</i>	+	-	+
			<i>E. agilis</i>	-	+	+
			<i>E. americana</i>	-	+	+
			<i>E. amphipyrenica</i>	+	+	-
			<i>E. bivittata</i>	+	+	-
			<i>E. caudata</i>	+	-	+
2	Phacaceae	<i>Lepocinclis</i>	<i>L. acicularis</i>	+	-	+
			<i>L. boeensis</i>	+	-	-
			<i>L. caudata</i>	+	-	+
			<i>L. conica</i>	-	+	+
		<i>Phacus</i>	<i>L. fusca</i>	-	+	+
			<i>P. abruptus</i>	+	-	+
			<i>P. acuminatus</i>	+	-	-
			<i>P. alatus</i>	+	-	+
			<i>P. bifurcatus</i>	-	+	+
			<i>P. circulator</i>	-	+	+

*(+) Present; (-) Absent

3. Results And Discussion

The distinctive morphological characteristics of *C. cambricum* where 6 cells were observed in the center of the coenobium forming a pentagonal pattern that looked the same in all specimens observed (Adam & Haryono, 2022). Two references (Adam, 2022b; Adam & Haryono, 2022). Three or more references (Adam, 2021, 2022a, 2022b; Haryono & Adam, 2021). Check the reference list for more details (Alves-da-Silva & Bicudo, 2009; Belcher & Swale, 1978; Dawson et al., 1988; Prescott, 1970).

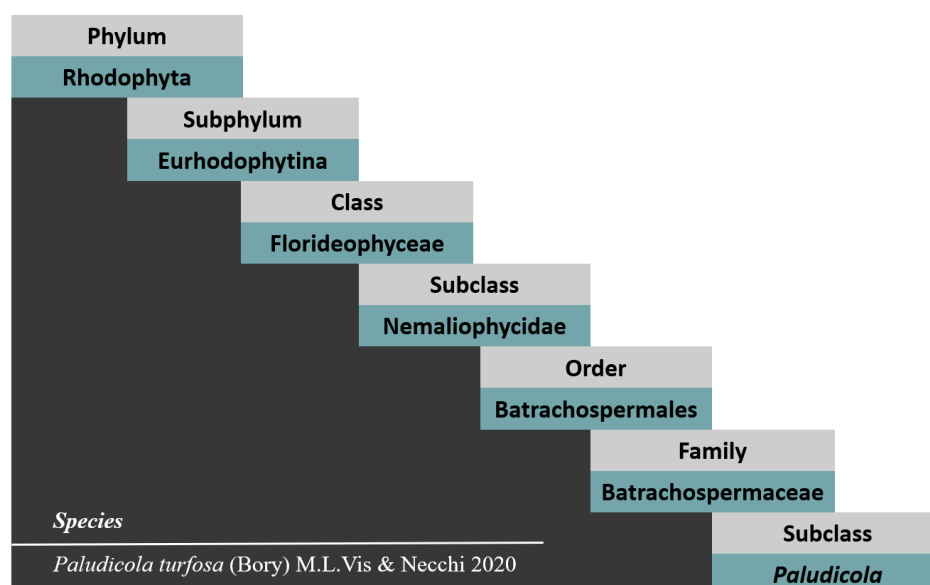


Figure 1. Taxonomical Classification of *Paludicola turfosa*

4. Conclusion

Clarity of all figures is of the utmost importance. If the final version is not prepared in a format or does not include all the details, the publication process will be delayed.

Acknowledgement

This work is supported by the Research Program supported by the Department of Education and Technology (program name), Country Name. Please also include the Grant number.

References

References should be in the APA 7th style, and only in English. Please ensure that all references in the text are also included in the reference list. The maximum number of references shall not exceed 35 articles for Full-Length Original Article/Research Article), and 50 articles for Review Article. "Unpublished observations" and "personal communications" are not allowed to be references.

- Adam, C. (2021). Biopython: Comparing the DNA Polymerase I (polA) Gene of Thermophilic, Mesophilic, and Psychrophilic Bacteria. *BiosciED: Journal of Biological Science and Education*, 2(1), 10–20. <https://doi.org/10.37304/bed.v2i1.2714>
- Adam, C. (2022a). The Development of Pycendo: A Web-Application to Analyze the DNA and Protein Sequences. *Unpublished Paper*.
- Adam, C. (2022b). Variety of Cell Size of *Cosmarium* spp. And *Euastrum* spp. (Desmidiaceae, Charophyte) from the Aquatic Environment around Palangka Raya, Central Kalimantan, Indonesia. *Jurnal Biota*, 8(1), 1–10. <https://doi.org/10.19109/Biota.v8i1.8002>
- Adam, C., & Haryono, A. (2022). Morphological Study of *Coelastrum cambricum* from the Peat Water of Palangka Raya, Indonesia. *Nusantara Science and Technology Proceedings*, 21–28. <https://doi.org/10.11594/nstp.2022.2504>
- Alves-da-Silva, S. M., & Bicudo, C. E. D. M. (2009). *Cryptoglena*, *Monomorphina* and *Phacus* (Euglenophyceae) of a reservoir in the State of Rio Grande do Sul, southern Brazil. *Revista Brasil. Bot.*, 32(2), 253–270.
- Belcher, H., & Swale, E. (1978). *A Beginner's Guide to Freshwater Algae* (3rd Editio). Institute of Terrestrial Ecology, Natural Environment Research Council, Cambridge.
- Dawson, N. S., Dunlap, J. R., & Walne, P. L. (1988). Structure and Elemental Composition of Pellicular Warts of *Euglena spirogyra* (Euglenophyceae). *British Phycological Journal*, 23, 61–69. <https://doi.org/10.1080/00071618800650081>
- Haryono, A., & Adam, C. (2021). The implementation of mini-research project to train undergraduate students' scientific writing and communication skills. *JPBI (Jurnal Pendidikan Biologi Indonesia)*, 7(2), 159–170. <https://doi.org/10.22219/jpbi.v7i2.15838>
- Prescott, G. W. (1970). *How to Know the Freshwater Algae*. W.C. Brown Company. <https://books.google.co.id/books?id=EQteuWJ3058C>