

Orbits W+WO IV CONTRAST Protocol

Scan notes:

For neonates (<2 years old), please use the 2D T1 sagittal and axial sequences and axial GRE. (The 3D sequences are more susceptible to motion artifact.)

- Advise patient to keep eyes still during orbit cuts (close eyes or focus on a spot with eyes open).

Revised 08/23/2021

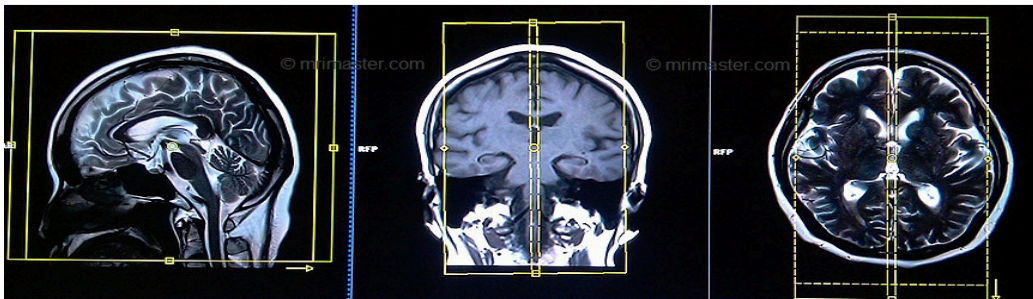
Charge as: Orbits W+WO IV Contrast

Scanner: 1.5T or 3T

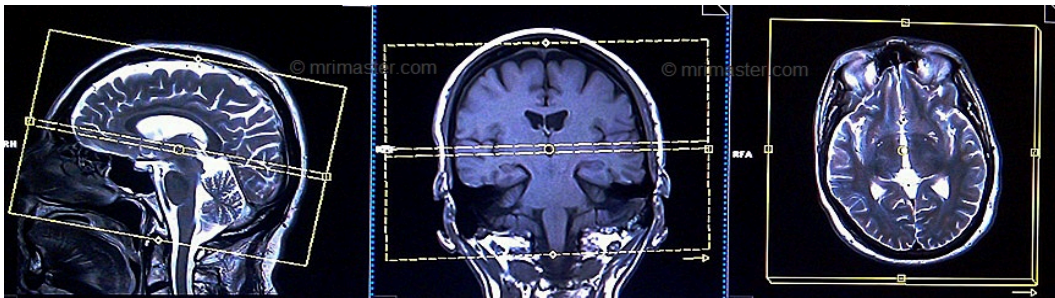
Coil: Head Coil/Flex Coil (flex coil may be needed if anterior head coil cannot clamp)

Plane	Weighting	Slice	Gap	FOV	FAT SAT	Scan Range
SAG	T1 MPRAGE 3D	1mm	0.5mm		None	Whole brain/parallel to midline of brain. MUST BE REROMATTED TO AXIAL
AXIAL	Diffusion	4mm	0mm		None	Whole brain/parallel to AC/PC line
AXIAL	T2 Flair	4mm	0mm		Strong	Whole brain/parallel to AC/PC line
Coronal	T1	3mm	0mm	10x15	None	Eye lenses-brain stem/perpendicular to optic nerve
Coronal	T2	3mm	0mm	10x15	None	Eye lenses-brain stem/perpendicular to optic nerve
Coronal	T2 DIXON	3mm	0mm	10x15	Strong	Eye lenses-brain stem/perpendicular to optic nerve
Axial	T1	3mm	0mm	10x15	None	Whole orbits/parallel to optic nerve
Axial	T2	3mm	0mm	10x15	Strong	Whole orbits/parallel to optic nerve
Inject Contrast						
Axial	T1	3mm	0mm	10x15	Strong	Whole orbits/parallel to optic nerve
Coronal	T1	3mm	0mm	10x15	Strong	Eye lenses-brain stem/perpendicular to optic nerve
AXIAL	T1	4mm	0mm		None	Whole brain/parallel to AC/PC line

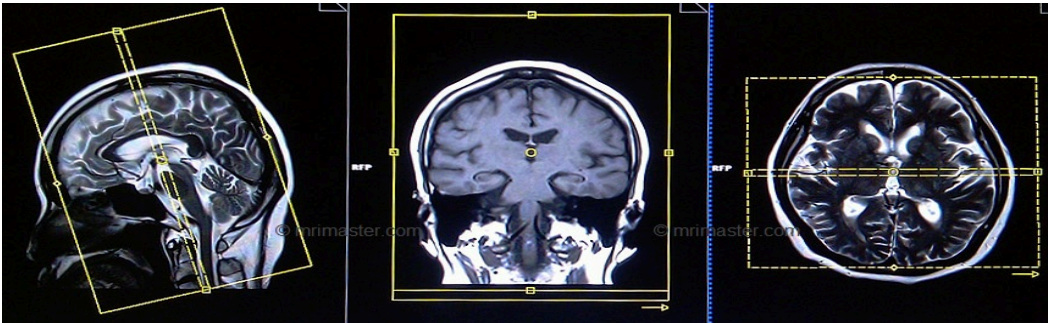
Brain SAG Image Planning:



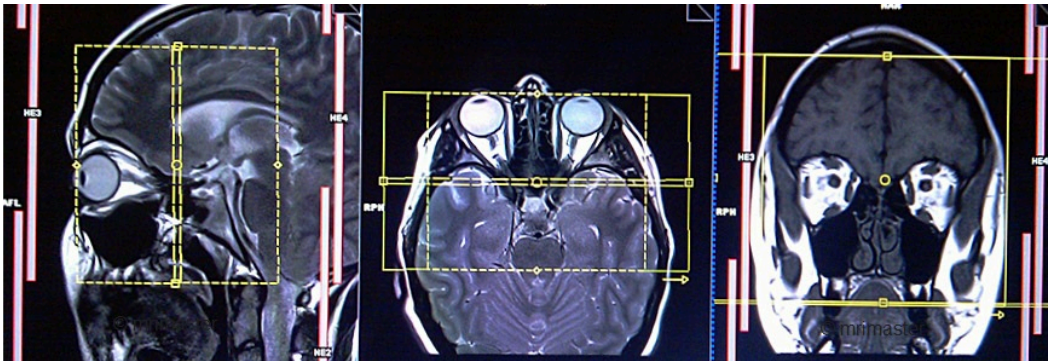
Brain AXIAL Image Planning:



Brain COR Image Planning:



Orbit COR Image Planning:



Orbit AXIAL Image Planning:

