

**ARTICLE TITLE MAXIMUM 3 LINES USING CAPITAL LETTERS TIMES  
NEW ROMAN 11 POINTS**

**Author's Name-1<sup>\*1</sup>, Author's Name-2, Author's Name-3, dst**

<sup>1</sup>Department / Study Program, University, City, Country

ARTICLE INFO	ABSTRACT
<p><b><u>Article history:</u></b> Received Revised Accepted</p>	<p>The abstract must contain a maximum of 150 words written in English. The abstract must contain (1) the research problem, (2) the objectives, (3) the method, (4) the results, (5) the benefits of the research findings. Times New Roman typeface 11. Line spacing is 1 space.</p>
<p><b><u>Keywords:</u></b> Keyword-1, keyword-2, keyword-3</p>	

**A. INTRODUCTION**

The Introduction contains a description of (1) the background of the research problem (state of the arts) and (2) the purpose of the research. The description must be based on references, data, and relevant previous research results. **It is highly recommended to base it on national journal indexed by Sinta or international journals indexed by Scopus/WoS.**

The description is written concisely and concisely using English. The length of the sentence should not be more than 4 lines. Times New Roman typeface 11. The line spacing of writing paragraphs in the body of the article is 1.4 (Multiple). The Introduction section should not display images or tables.

Citations from references are strongly recommended using Mendeley. Authors can use it on the References menu in MS Word. The citation system

used in the JURNAL GEOGRAFI Geografi dan Pengajarannya (JGGP) is the APA system.

**B. METHOD**

The Method section outlines the methods used in the study in English. Describe the methods used in detail, concisely, completely, and clearly. Make sure that the outlined method can be repeated or performed by the reader appropriately and correctly.

The formula is written on a single line followed by a sequence number. The writing of the formula is accompanied by a description of the symbols used. If the formula cites a specific source, write down the source of the formula. An example of formula writing is as follows.

$$Y = aX + bX + c \dots \dots \dots (1)$$

Information:

X,Y : Remarks-1

a,b,c : Remarks-2

(Source : author, year)



Figures and tables can be displayed in sections B. Method and C.1. Result.

## C. RESULT AND DISCUSSION

### C.1. RESULT

Part C. RESULT AND DISCUSSION is divided into two parts, namely C.1. RESULT, and C.2. DISCUSSION. Please pay attention to this, so that the description is clearly divided. This division is intended so that readers can easily find the results of these studies and discuss them with similar previous research.

Section C.1. RESULT, outlining the results and findings of the research in detail and completely in English. The

results and findings of the research are described in the form of descriptives, figures or tables. Section C.2. DISCUSSION, describes the discussion of the results of this study with the results of previous research that are similar in English.

The appearance of the image is done in a single-column format. Images must be in high resolution. All text on the image must be in English. The text on the image should be legible. There is a sentence that directs to the picture. Below the image must be captioned. An example of an image can be seen in Figure 1.

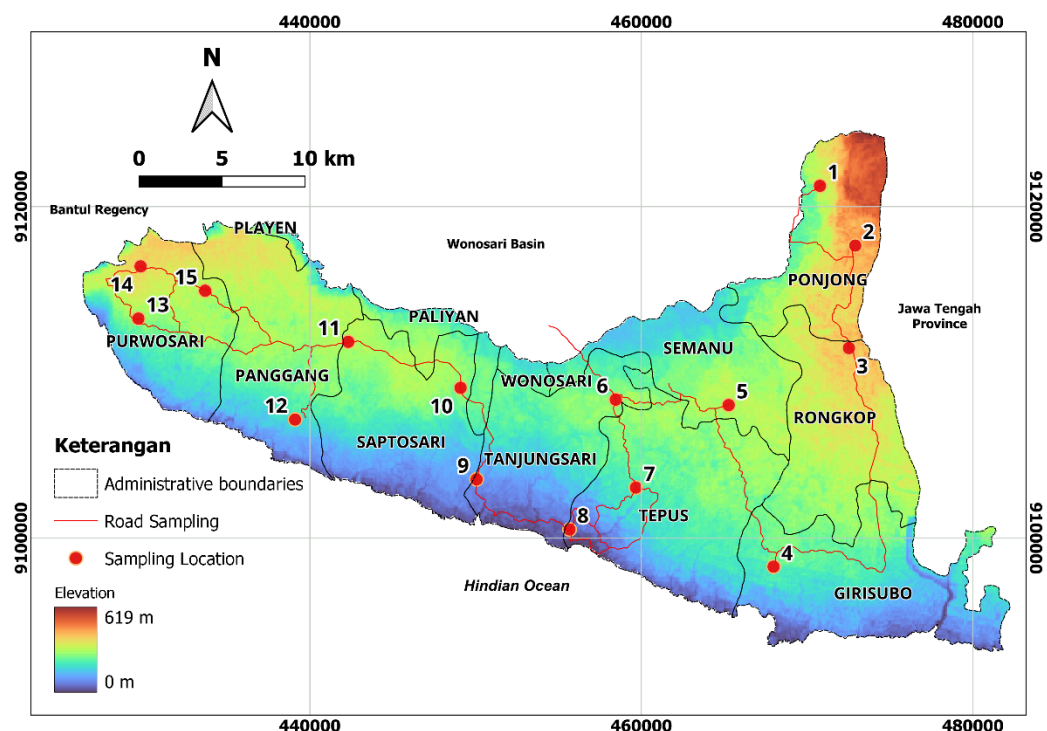


Figure 1. Example of an image in a JGGP manuscript article.  
(Source: author, year)

The description of the picture is written at the bottom of each picture. The images featured in the article **must not be more than two images**.

The results of the study can be displayed in a table in English. **The number of tables displayed on a JGGP article should not exceed 4 tables**. The table is written in a 1-column format. The

table title is written on top of the table. The source of the table is written below the right-aligned table. There must be an explanatory sentence that leads to the table. The column title typeface is Times New Roman 11. The typeface of the table is Times New Roman 10. The space of the table is 1.15 points. An example table can be seen in Table 1.

**Table 1. Example of JGGP article table**

Column Title-1	Column Title-2	Column Title-3	Column Title-n
Row-1	Row-1	Row-1	Row-1
Row-2	Row-2	Row-2	Row-2
Row-n	Row-n	Row-n	Row-n

(Source: table data source, 2024)

At the bottom of each table there must be a sentence explaining the table. The sentence briefly explains the contents of the table. The explanation is written in detail and clearly in English. It is highly recommended that the table position be at the beginning or end of the page.

## C.2. DISCUSSION

Section **C.2. DISCUSSION** discusses research results with references or similar previous research results. This section is written in full in English. Use references to Scopus / WoS indexed journals as a comparative material for research findings. **It is highly recommended to use at least 75% of the references used in the study. Section length C.2. DISCUSSION is strongly recommended at least the same as the C.1 RESULT section, not shorter.** We

really appreciate the quality discussion. Articles with quality discussions will be prioritized in JGGP publications.

## D. CONCLUSION

This section is the conclusion of the research. This section is written in the form of descriptive paragraphs, not numbering. Write the conclusion of the study in one paragraph concisely and clearly.

## ACKNOWLEDGE (if any)

Write acknowledge if there is anything that needs to be mentioned in this article.

## BIBLIOGRAPHY

The minimum bibliography is 15 pieces. It is recommended to write using the Mendeley Reference application. Writing using APA models. It is highly recommended to use national journals indexed by Sinta or

indexed by Scopus/WoS in the last 5 years. The line distance is 1.15 points.

The minimum bibliography is 15 pieces. It is recommended to write using the Mendeley Reference application. Writing using APA models. It is highly recommended to use national journals indexed by Sinta or indexed by Scopus/WoS in the last 5 years. The line distance is 1.15 points.

The minimum bibliography is 15 pieces. It is recommended to write using the Mendeley Reference application. Writing using APA models. It is highly recommended to use national journals indexed by Sinta or indexed by Scopus/WoS in the last 5 years. The line distance is 1.15 points.

The minimum bibliography is 15 pieces. It is recommended to write using the Mendeley Reference application. Writing using APA models. It is highly recommended to use national journals indexed by Sinta or indexed by Scopus/WoS in the last 5 years. The line distance is 1.15 points.

The minimum bibliography is 15 pieces. It is recommended to write using the Mendeley Reference application. Writing using APA models. It is highly recommended to use national journals indexed by Sinta or indexed by Scopus/WoS in the last 5 years. The line distance is 1.15 points.

The minimum bibliography is 15 pieces. It is recommended to write using the Mendeley Reference application.

Writing using APA models. It is highly recommended to use national journals indexed by Sinta or indexed by Scopus/WoS in the last 5 years. The line distance is 1.15 points.

The minimum bibliography is 15 pieces. It is recommended to write using the Mendeley Reference application. Writing using APA models. It is highly recommended to use national journals indexed by Sinta or indexed by Scopus/WoS in the last 5 years. The line distance is 1.15 points.

The minimum bibliography is 15 pieces. It is recommended to write using the Mendeley Reference application. Writing using APA models. It is highly recommended to use national journals indexed by Sinta or indexed by Scopus/WoS in the last 5 years. The line distance is 1.15 points.

The minimum bibliography is 15 pieces. It is recommended to write using the Mendeley Reference application. Writing using APA models. It is highly recommended to use national journals indexed by Sinta or indexed by Scopus/WoS in the last 5 years. The line distance is 1.15 points.

The minimum bibliography is 15 pieces. It is recommended to write using the Mendeley Reference application. Writing using APA models. It is highly recommended to use national journals indexed by Sinta or indexed by Scopus/WoS in the last 5 years. The line distance is 1.15 points.

The minimum bibliography is 15 pieces. It is recommended to write using the Mendeley Reference application. Writing using APA models. It is highly recommended to use national journals indexed by Sinta or

indexed by Scopus/WoS in the last 5 years. The line distance is 1.15 points.

### **ATTENTION:**

The number of pages from title to bibliography must be an even number (10/12/14/etc.). Articles must end on even pages. The last bibliography should be worked on to the bottom position on the last page.

---

## **Manuscript Identity**

Title	:	.....
Author 1	:	.....
Email	:	.....
Institution	:	.....
Country	:	.....
Telp/WA	:	.....
Author 2	:	.....
Institution	:	.....
Email	:	.....
Country	:	.....
Author ...	:	.....
Institution	:	.....
Email	:	.....
Country	:	.....

All author names must be uploaded in the meta data (<https://journal.unesa.ac.id/index.php/jg>) at the time of submitting the manuscript.