

**name:** laplace

**pronouns:** she/they

**type:** collision/nebula

**anomalies:** decay condition

**ability:** SCHRÖDINGER'S CAT: ascension both stalls and speeds the rate of everything around her-- including herself's-- particle decay, creating minor pocket universes in which both states happen at once for a short period of time. this is.. disorienting at best, and traumatizing at worst. tests have pushed this to lasting a few minutes max, and using her ability soft-resets her own physical state.

**personality:** somewhat spacey, fascinated by the experiments that created her and the lab she's grown up in. she was meant to be an experiment, sure, but that's not stopping her from doing her own science. passionate about her interests and self, and distant about everything else. morbidly fascinated by death and rot of all kinds.

**quest:** laplace wants to know everything about herself, about quantum theory, about physics-- to discover new formulas, and get an answer to things considered purely theoretical. her own

existence is almost an answer to one! why stop there? she'll use herself as fuel unthinkingly and w/out concern for her own safety, and maybe others too. it's yet to come up.

**skillset:**

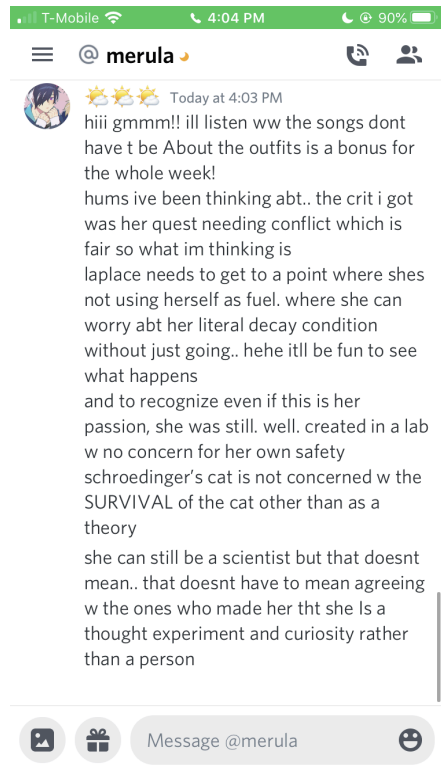
- + the scientific method
- + utilizing her ability in tests
- + complete lack of reasonable fear
- + scrap sensitive, space-time affinity
- severely, musically tone deaf
- relating to others as equals, empathy
- focus on anything other than science

**fun facts:**

- she does her *best work* (in her opinion) in ascended form, though this can cause as many problems as it solves!
- claustrophobic— used to small spaces and can focus best in them, but they put her on edge after awhile and she gets bored.
- declared herself a scientist and they went w/ it. she's a cute mascot and they get the most compliance if she's in 'control' of her own experiments and tests.
- favorite concept? the music of the spheres

**background:** laplace was hybridized in an attempt to put quantum theory to a physical test— they were going for a three-way hybrid, but the decay type stuck around as an anomaly instead, placing her in a sped-up state of particle decay. as for what will happen when she decays too much to hold her form.. who knows? hybridized from three very recent spawns, w/ no experience prior to the labs even if she did remember being them.

5/10, quest additions from crit (to be edited..)



5/14, outfits wk2

outfit #1

- stolen, tattered complex-size labcoat

it got caught up in one of the first long tests of her powers, and in an attempt to contain some of the decay one of the kinder scientists tossed their coat over her. it didn't work, falling right through her and rotting at the edges, but they 'allowed' her to keep it, worried that it'd contaminate the rest of the lab anyway. laplace's sensory experience isn't too intense, but she *is*

often cold, and this coat's her prized possession and nest. good to sleep on! it makes her feel professional and like one of the scientists here in their uniform labcoats, for realies. truly, absurdly oversized— it belonged to a karacel, and she is 7 inches tall. polyester, as organic materials seem to wear through under the influence of her ability the fastest.

- hastily clipped on identification badge

most experiments at the facility would be tagged visibly to keep track of them and distinguish them— they've tried this, but when laplace ascends, tags, id bracelets, or even collars clip right through her. she likes her coat enough that she's always wearing it, so they're calling a badge on it good til they have their next idea. reads, in text that glows in the dark or under uv light, "laplace', specimen 51, 78, 104

class a, compliant

facility access supervised"

and has a code to scan for authorized access to her in-depth files.

#### outfit #2

- internal containment spacesuit, lab-assigned

if laplace is going to be around sensitive equipment— or *people*— outside purposeful tests, it's better to be safe. her suit looks pretty standard— it's the same principle to contain a vacuum as to keep it out, and she obviously doesn't need air. her same old identification data and code to scan is emblazoned on each arm. it will contain the effect of her ability for up to two minutes before the quantum instability can escape. half again her size to compensate for the additional size in ascension.

#### outfit #3, 5/15

- ironically space-patterned sundress, w/ tied ribbons for sleeves

she just thinks it's cute! this one's only added to her repertoire once laplace has been out of the lab and experienced real people— while she still prefers to be 'professional' w/ this including her spacesuit, patterns that match her nebula typing are pretty cool too. she's proud of herself, and likes showing off. ribbon sleeves are easiest to negotiate around the neck halo, since they tie at the shoulders. not as hardy as her other clothes, but chosen on her very own. (she still clips her id to the front, sometimes). polyester to last longer wrt particle decay and instability.

- matching sunhat to shade her eyes

natural lighting after getting used to fluorescents can be.. a problem. it's a cliched outfit, but she picked based off magazines and mannequins in-store rather than try and figure out style entirely on her own just yet— the hat's got the same ribbons as the sleeves, and it's made from somewhat tattered straw. organic material can handle her ability the least ):



5/15, playlist cover and reasoning added



🎵 <https://open.spotify.com/playlist/2Q52AoxilV5LPEGO6aiShT> 🎵

a mix of primarily-instrumentals that, as an ic reason, grew on laplace being played in the labs (“classical music’s good to make ‘kids’ develop better, right—?”, “it’s good background noise.”) and that suit tonally w/ a focus on piano, bass, and game osts, as well as lyrical songs that apply. key lines highlighted. fun to write her to (:

**human of the year** - regina spektor  
**the calculation** - regina spektor  
**rtrt** - mili  
**project ma** - mothy  
**cosmic** - wave meow  
**ga1ahad and scientific witchery** - mili  
**significance** - keiichi okabe  
**nattoppet** - detektivbyrån  
**monochrome anomaly** - feryquitous, f9  
**veritas** - presti  
**libera me** - cranky  
**electron** - ice bird studio  
**dream (chiptune edit)** - rabpit, ice  
**amalgam** - toby fox  
**satellite connect** - nakuru aitsuki  
**discommunication alien** - nayutalien  
**machiavellian bach** - aperture science psychoacoustic laboratories  
**nihilum** - arkana  
**still dreaming** - sad face  
**tick tock** - pascal michael stiefel  
**clocktowers beneath the sea** - pascal michael stiefel  
**vanishing point (hummed)** - darren korb, ashley barrett  
**blackhole blitz** - gooseworx  
**heart of the crypt** - danny baranowski  
**you are not part of the control group** - aperture science psychoacoustic laboratories

5/17, storage and inventory

the bulk of her inventory is cannibalized from the lab and similar items— her realm of comfort primarily includes lab equipment and type-relevant materials, having seen their proper use for so long. she can use normal items with instruction, but.. she kinda likes sticking to familiar stuff! everything is properly sanitized regularly— particle decay is no excuse for filthiness!

## **STORAGE:**

- assorted labcoat pockets

laplace's gifted labcoat had pockets to begin with, but she's patched the already extant ones with varying colors of fabric and sewn more all through the inside. as a concession to its size, each oversized pocket closes with a tiny, tcp-sized button.

- cardboard box

this is where she sleeps, and also a great place to shove all her varied equipment! (obligatory schroedinger joke: if you open the box, will the cat inside be dead or alive?) also previously lab equipment— nearly all of her most favored or pre-existing items were. printed w/ the logo.

### KEY ITEM:

- a telescope, altered to pick up scraps and other types of radiation

even outside her typing, laplace has found herself fascinated by space— this lets her view and collect the scraps she specializes in, and she's taken a look at herself through it out of curiosity. the scale makes it hard to see, but it's *some* information on her physical composition! through a lense like that, she can even think of parts of herself as 'beautiful.'

### BASIC INVENTORY:

- tcp-sized bunsen burner

prepare food types on the go! burn sensitive materials! it's all up to you! fitted specifically with a setting appropriate for sanitizing lab equipment.

- alcohol wipes

to some small extent, sanitizing objects after usage of her ability seems to reduce how much decay *sticks*. that, and she was created in a sterile environment— at this time, dirt and wear still bothers her.

- astrolabe

more decorative than strictly useful, but when laplace finally left the labs, she became fascinated by the stars of morbit above— she likes having a touchstone to match to her typing, and feels connected to space as a whole. fitted on the back with a simple, magnetized compass.

- lab-issue id card

part of the conditions for laplace's being allowed to leave included setting her up as if she really was a scientist working for them— supposedly, as they've moved past any testing save waiting to see what happens as she decays, they wish to see her in action in uncontrolled environments. this identifies her still as an experiment but also an employee. (see: wardrobe).

- m\*rasaki no q\*\*lia

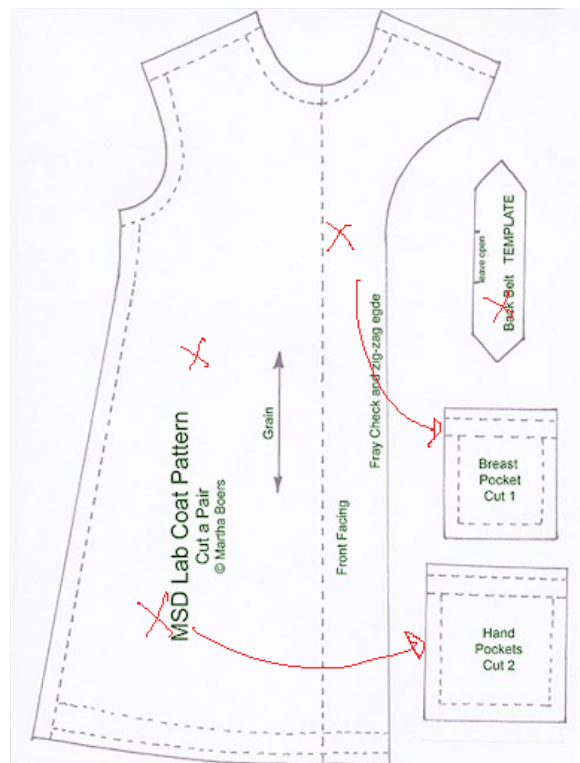
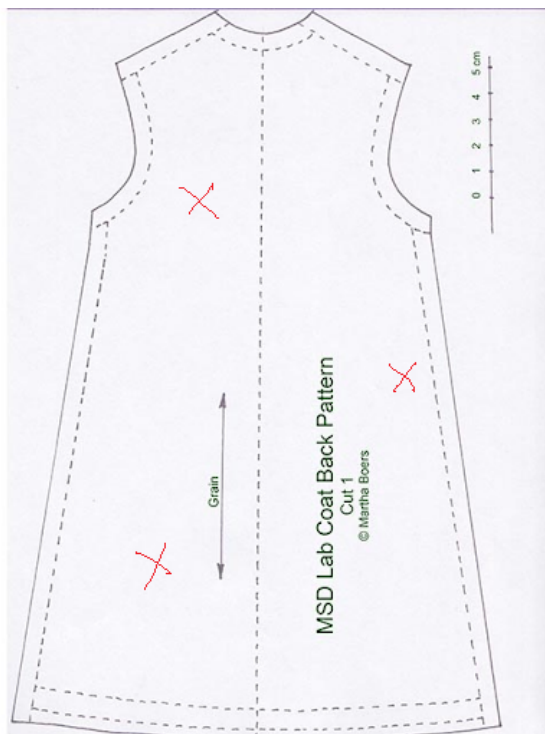
(i'll.. think of a clever parody name when i can...) a comic that she found when she first left the lab and started looking into things other than her direct interests and experimentation— the tone's very much what i was going for with some of her writing (: the real manga is an extended metaphor for qualia as commentary on.. humans not understanding each other; empathy for others and objects and a plot spanning parallel universes. i really like it! it's kind of dark, but the

main romance is genuinely sweet and i love theoretical physics as a science and a narrative conceit. i think she'd really enjoy it, frankly. she sees herself in yukari. she rereads abt a chapter a day for comfort.

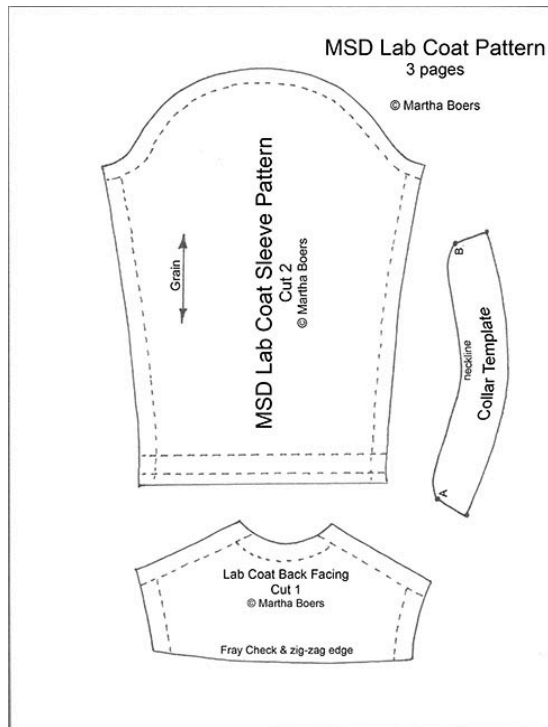
## NOTES:

long-term exposure to laplace's ability tends to wear through organic materials, thinning them, and slightly warp nonorganic— glass and metal are the least affected, and specially treated substances or equipment built to work with scraps or destructive tcp abilities are functionally immune. one working theory is that objects affected by her ability, when or if her decay progresses too far, will also break.

5/22, labcoat pattern ref and pocket locations, id card, lab logo, labcoat mini-size

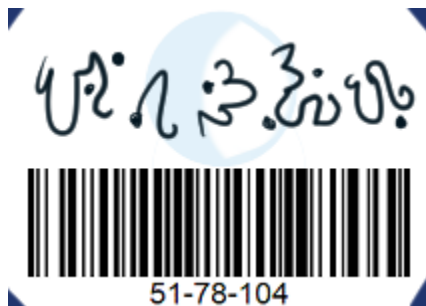






<http://www.antiquelilac.com/msd-lab-coat---tutorials.html>

x's represent pocket locations on laplace's.





5/23, moodboard and explanation



[astrolabe](#), [fluorescent lighting](#), [astronaut](#), [lab equipment and organic materials](#), [antique planetarium](#), [distorted hands](#), [fixer pv screencap](#), [telescope and compass](#), [space](#)

- astrolabe, lab equipment, spacesuit, and the telescope and compass are pieces of her equipment and inventory— a lot of her personal taste and aesthetic still revolve around her 'job'.
- fluorescent lighting same token, but also just aes, i'm gonna be honest. "work harder!" she's highly motivated. good colors too
- antique planetarium's somewhere she'd really, really like. homey, the type of place she could grow to love, and suits her.
- distorted hands suit both her ability and its somewhat distressing effects and her place of creation— the labs were not. the most caring or focused on her comfort, and even if she hasn't realized or worked through this.. it's a looming specter.
- space bg behind the rest, tho only a piece pokes through, shamelessly represents her typing. i'm really pleased w the colors on this one next to her model!
- and the fixer pv screenshot— while i didn't put it on her playlist for content reasons, this song's aesthetic fits her. originally a v flower song by nuyuri, and a mechanical voicebank suits very well. "i've been looking at a false image that flitted through my feverish mind; i've been looking at my own self."

#### 5/24 rough quest additions

- STARTING POINT: short story about laplace's hybridization
- lab reports: laplace classification, fixation on experiments, letting her leave
- 2 fears
- 2 goals
- what sparked adventure, laplace's feelings, preparations (fit into stories but maybe also list?)
- quest itself spans laplace's taking an interest in her own experiments, to leaving, to trying to become something other than 'just' a lab cat

#### changelog-

quest updated 5/10, wip playlist added; rough palette generated  
 5/14, outfits 1 and 2; song additions  
 5/15, playlist cover, reasoning, and additions; outfit 3 and detailing  
 5/17, basic storage and inventory  
 5/22, labcoat pattern ref and pocket locations, id card, lab logo  
 5/23, moodboard and explanation

5/24 rough quest additions

**(rough dates for organization— first listed the day they were presentable but mostly polished from then til submission day.)**