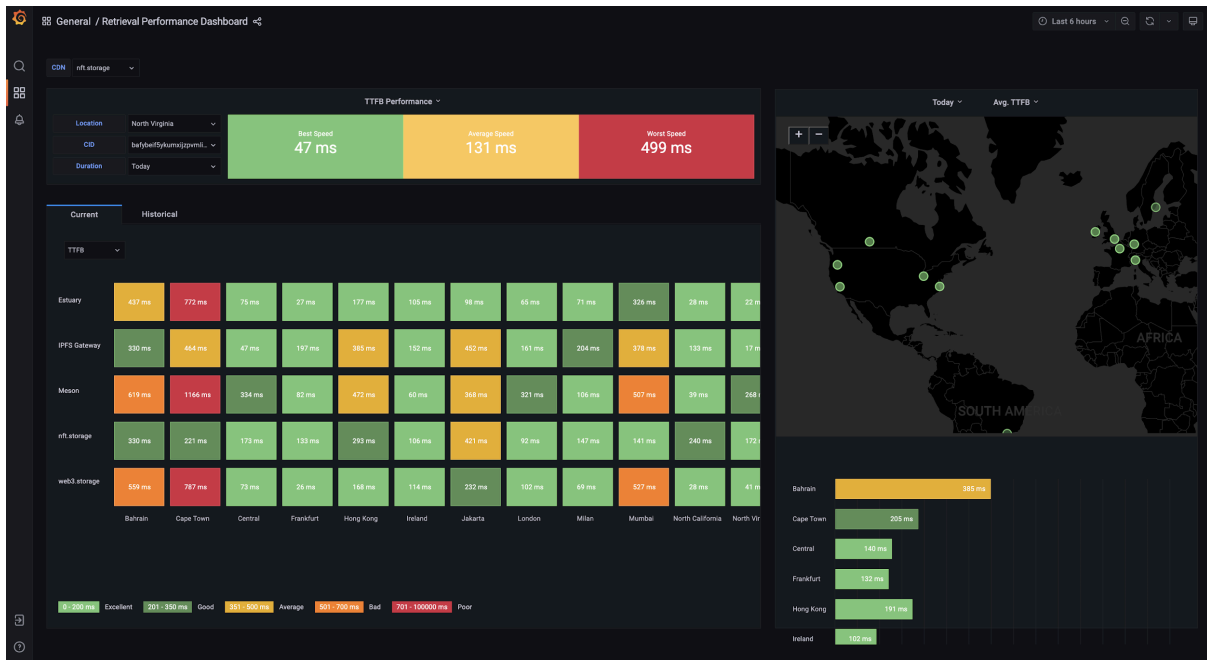


web3 CDN Performance Dashboard

1. This is the main screen of the web3 CDN Performance Dashboard.

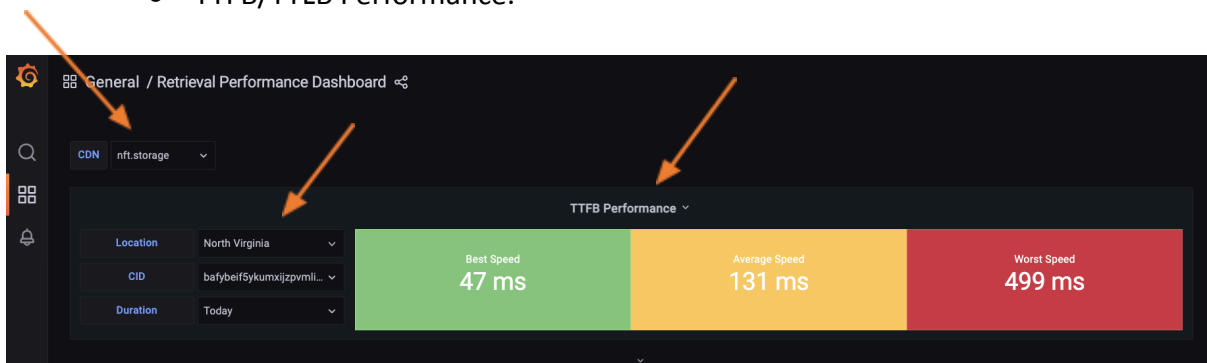


2. From the top left corner of the dashboard you can select the following options :-

- CDN

and then from the next menu you can select the following options :-

- Location.
- CID.
- Duration.
- TTFB/TTLB Performance.



This part of the dashboard will display the following speeds (in milliseconds) :-

- Best Speed.
- Average Speed.
- Worst Speed.

for the options which will be selected by the user.

- This part of the dashboard shows a heatmap which displays the current TTFB/TTLB performance for all the networks in all the regions.



From the top right you can select TTFB or TTLB option and the whole heatmap will display the values according to the selected option.

The colour of the each box of the heatmap changes according to the legend which is provided at bottom of the heatmap.

The heatmap refreshes every 30 seconds and the new values are displayed on the heatmap.

4. This part of the dashboard shows historical line graph which displays the performance of two networks so that the user can compare between them.

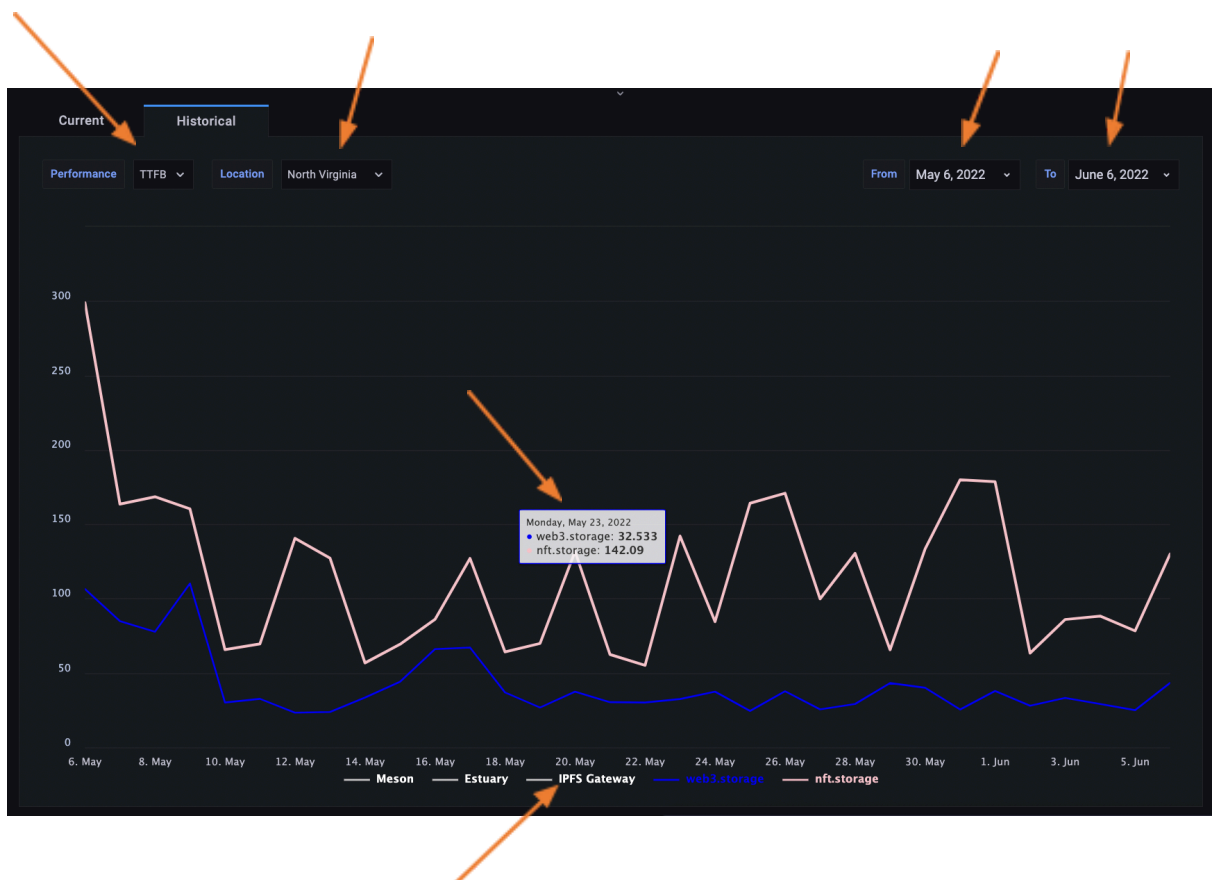
Right above the graph the user has the following options to select or modify the data which is displayed in the graph :-

- Performance (TTFB/TTLB).
- Location.
- From (Start Date).
- To (End Date).

After selecting these options the graph will display the data based on these options and the user can only see the data for two networks at once for comparison.

When the user will hover their cursor over the line then they can see the exact performance values for the selected two networks for that particular date.

If the user wants to change the two selected networks to some other networks they can do it from the bottom of the historical graph.



5. This part of the dashboard comprises of the following : -

- A World map which displays dots on all the locations where the bots are deployed currently.
- A Horizontal bar graph which displays the average TTFB/TTLB performance values of all the regions.

The colour of the dots in the world map are dynamic and changes according the average TTFB/TTLB performance values which are displayed in the horizontal bar graph.

There are two dropdowns from which the user can select the following options : -

- Average TTFB/TTLB.
- Duration (Today, Last 7 Days, Last 30 Days).



