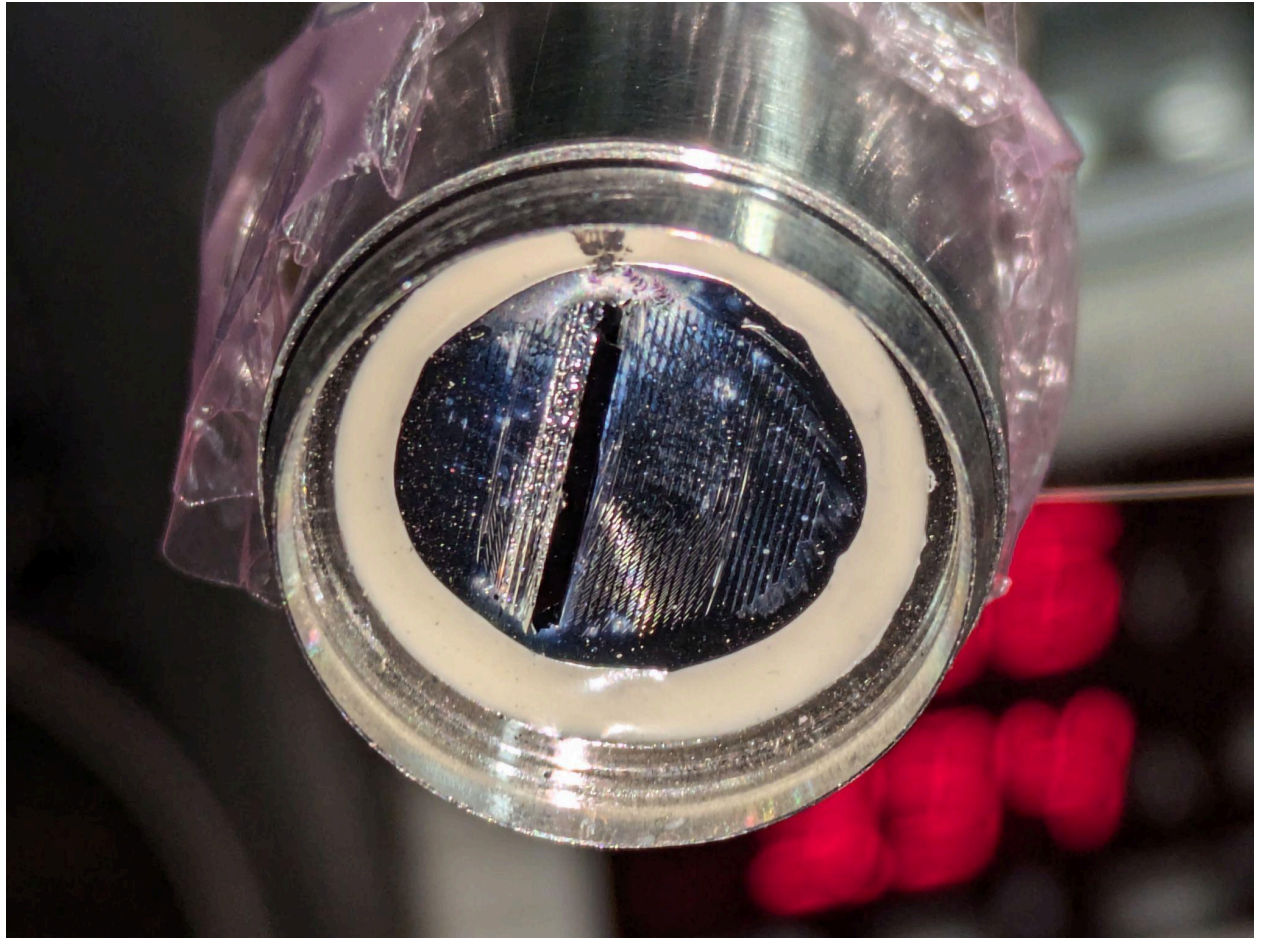
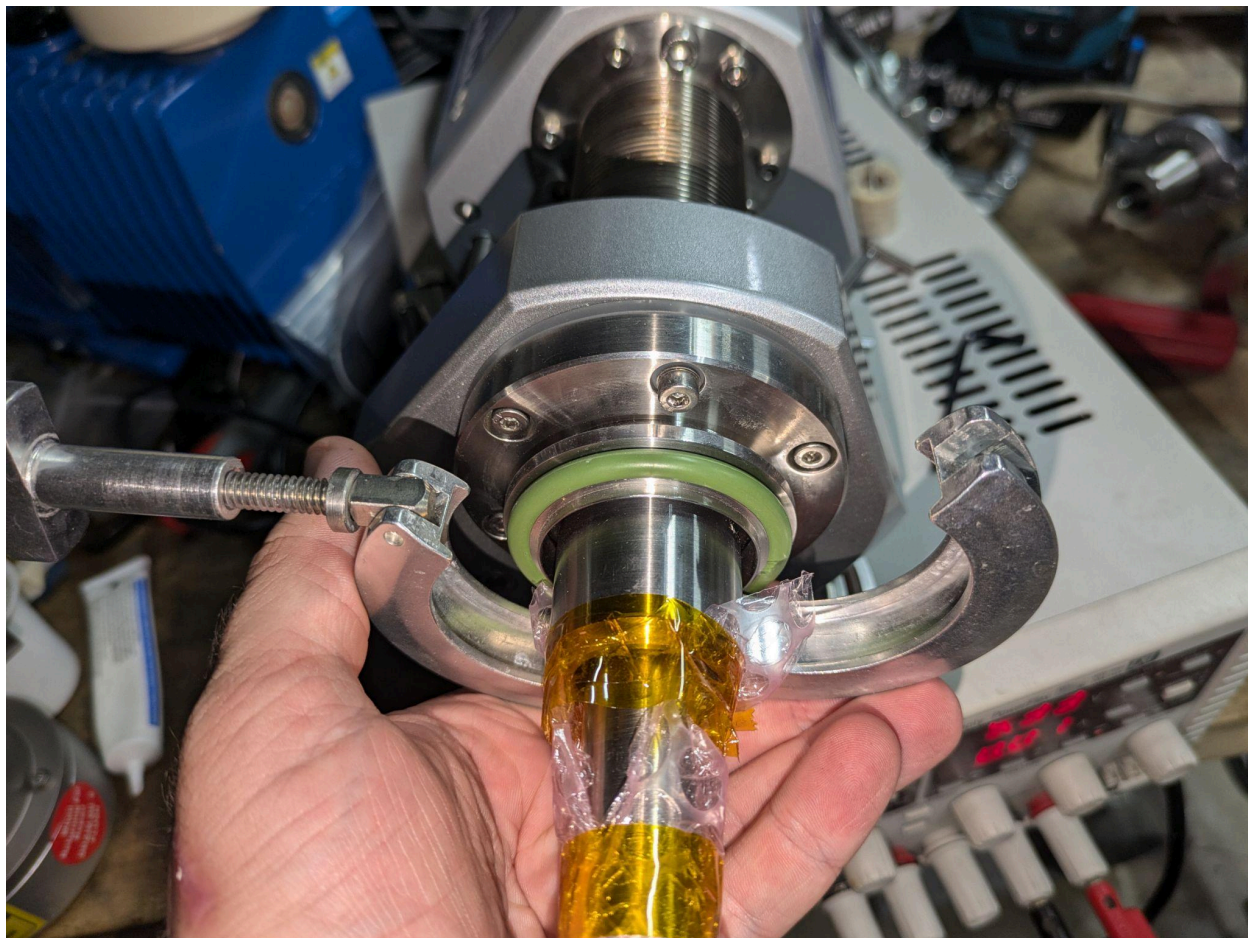
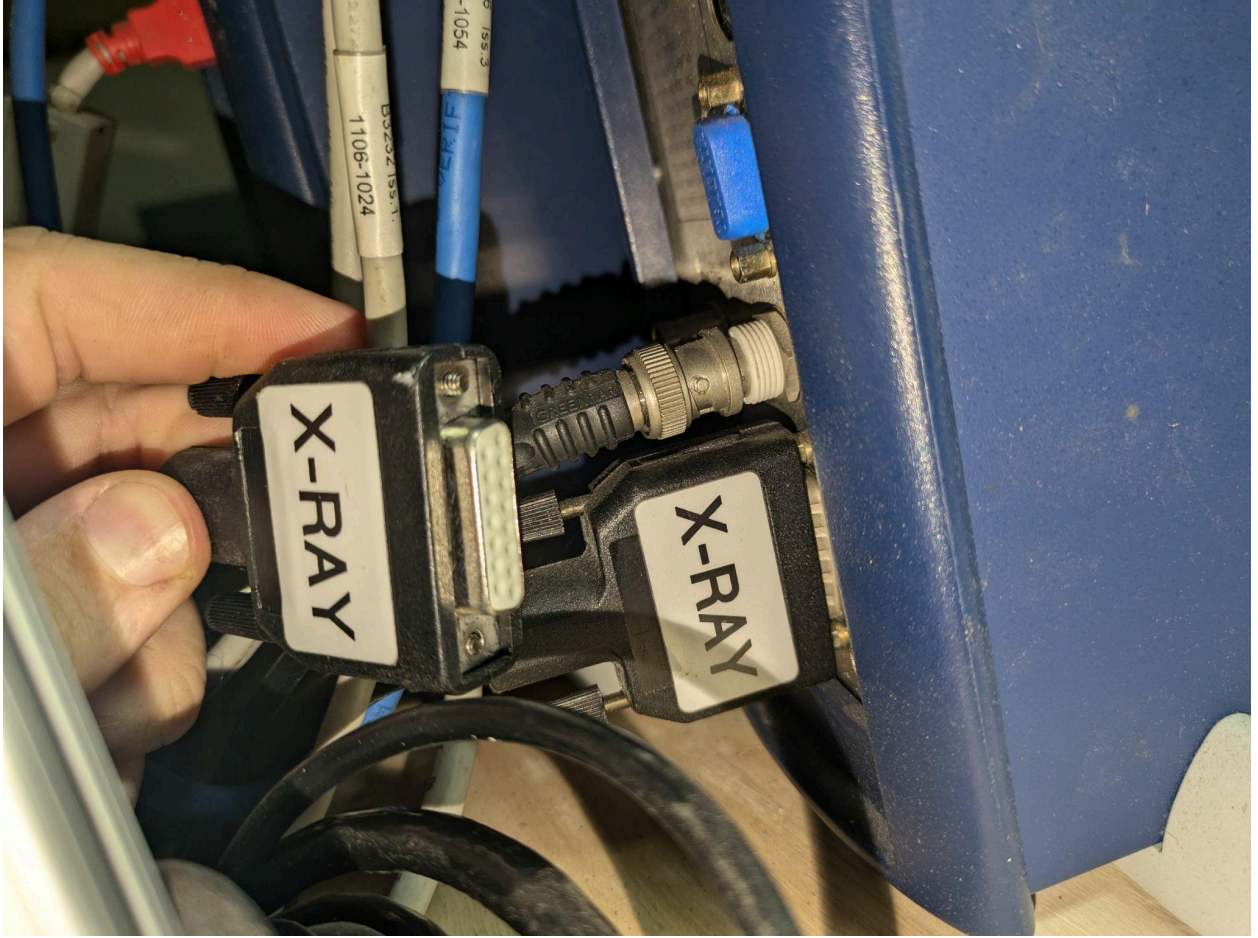


both of these are big bois





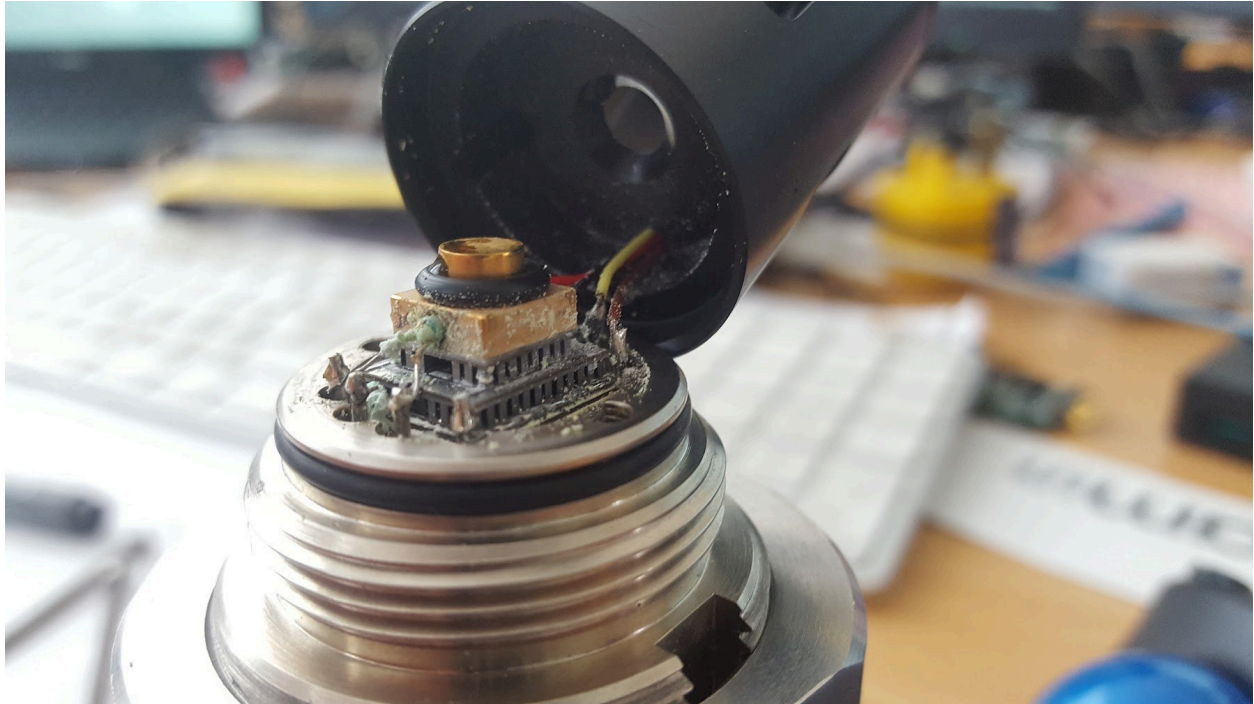






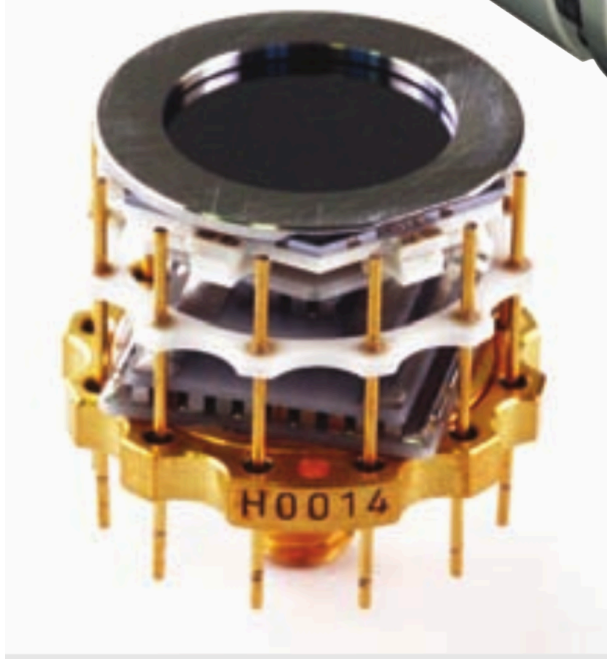


<https://x.com/johndmcmaster/status/1814893832435343631>

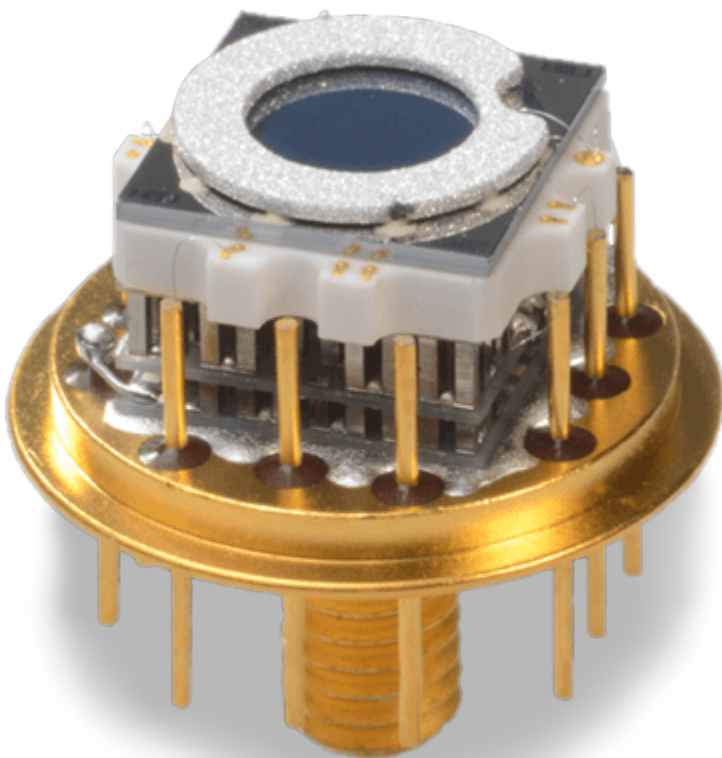


"I had this dual layer, atop a further 3, on a micro-sized compressed gas cycle cooler block. Managed was able to get a -70 degree C depression on ambient.

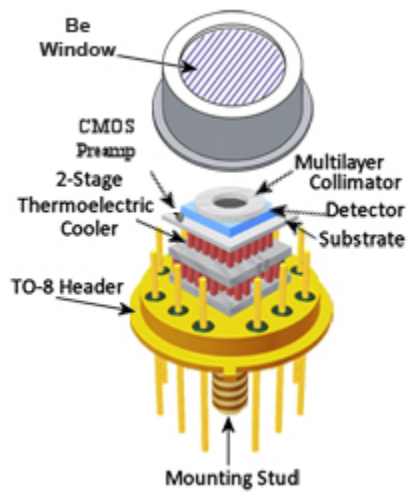
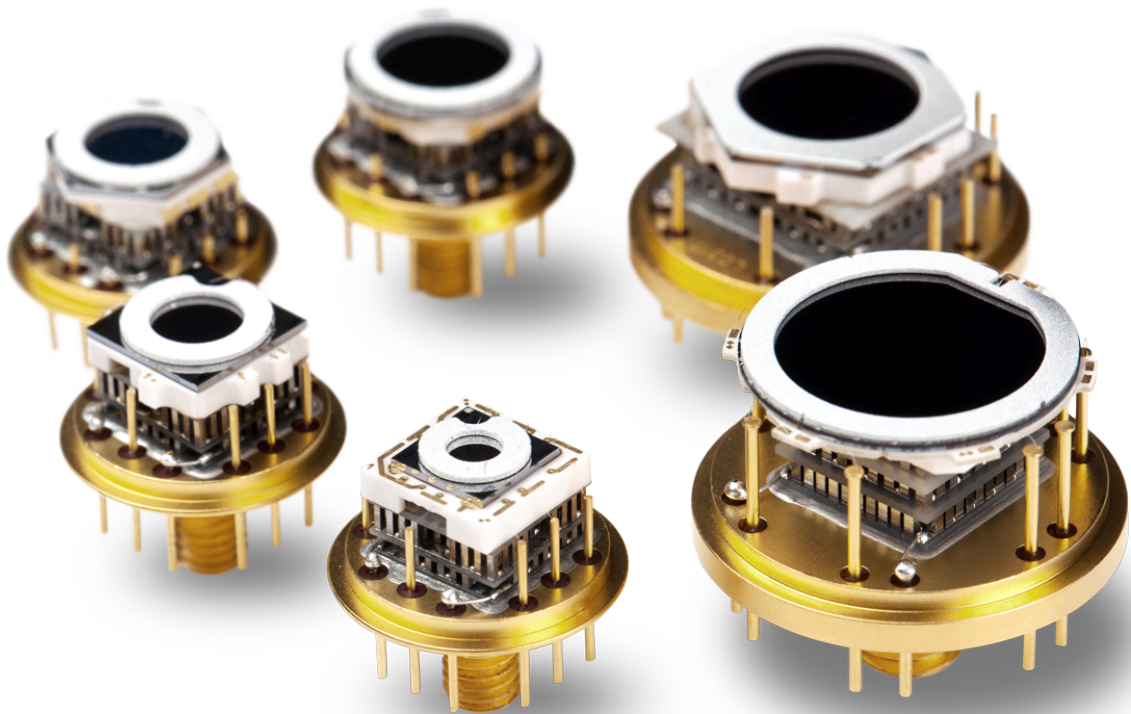
I think the full peltier draw was ~150W for that tiny mirror mass."

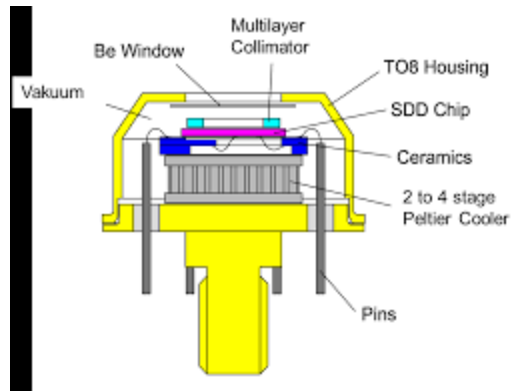


above: reference module
is this ketek?









**CREATIVE
DETECTOR
SOLUTIONS**

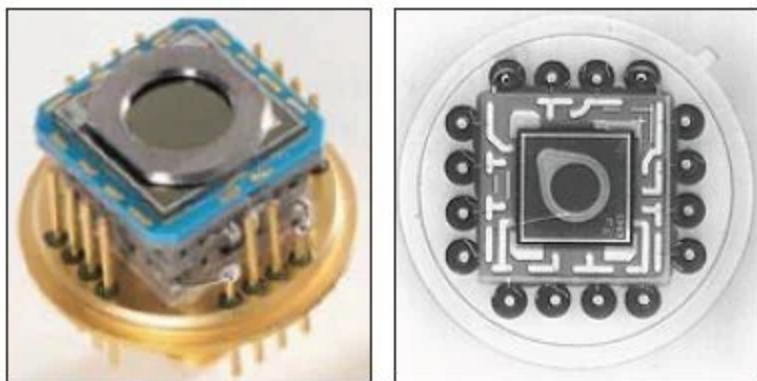




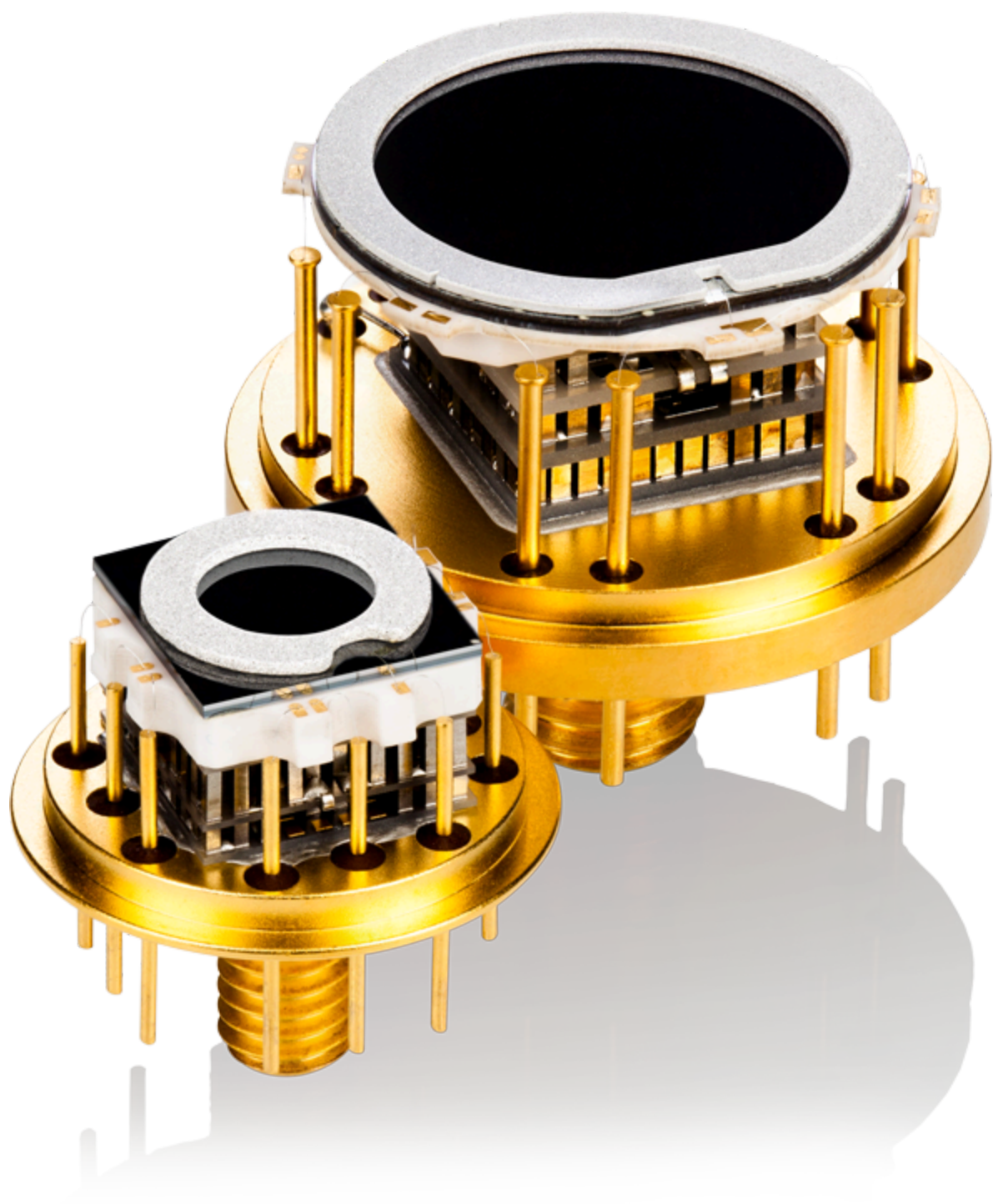
KETEK

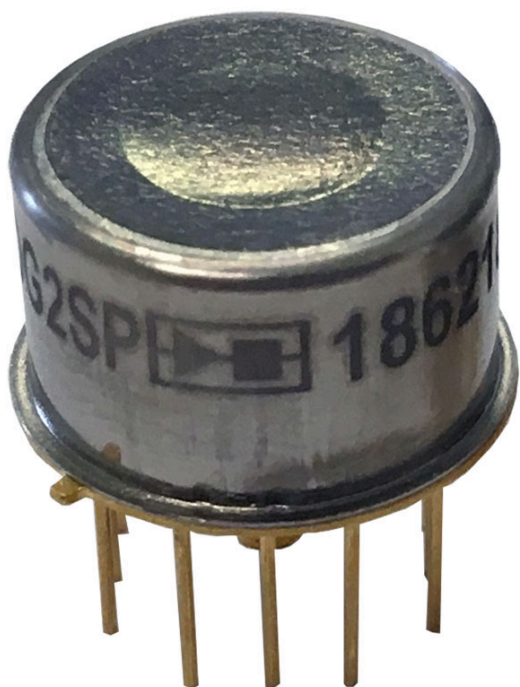
<p>SDD</p> <p>THE GOLD STANDARD IN SILICON DRIFT DETECTORS</p>	<p>SiPM</p> <p>SILICON PHOTOMULTIPLIERS NEXT GENERATION VERSATILITY</p>
---	--



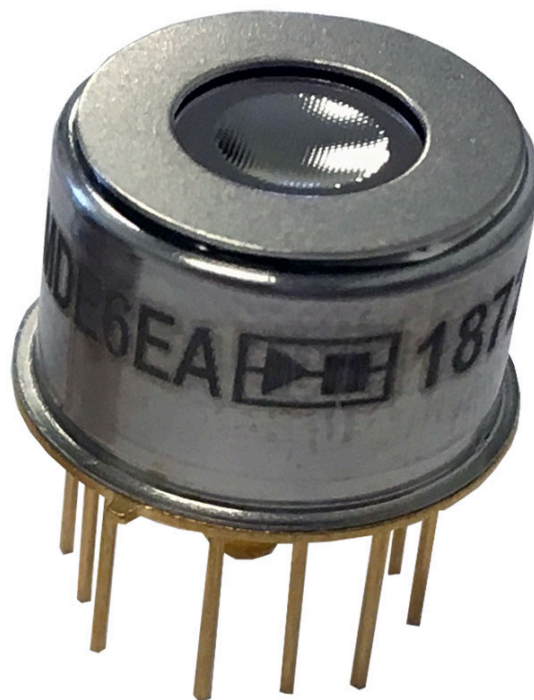


<https://www.azom.com/article.aspx?ArticleID=11973>





**FAST SDD with
Be Window**



**FAST SDD with
C Series Window**