

# Brain-Epilepsy- 3T Surgical Planning Protocol

Protocol is for 3T only

Revised 11/12/2021

Charge as: Brain W+WO IV CONTRAST

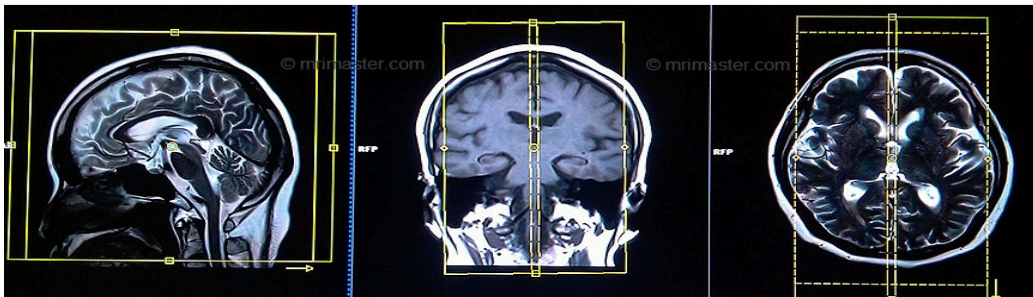
Scanner: 3T

Coil: Head Coil/Flex Coil (flex coil may be needed if anterior head coil cannot clamp)

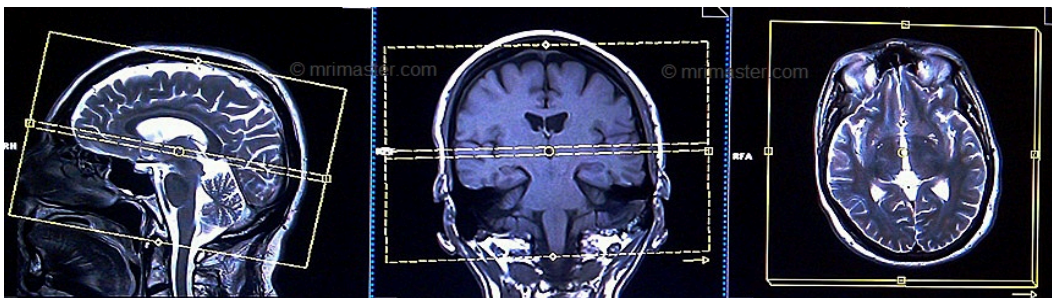
Plane	Weighting	Slice	Gap	FAT SAT	Scan Range
<b>SAG</b>	T1 MPRAGE 3D	1mm	0.5mm	None	Whole brain/parallel to midline of brain. MUST BE REROMATTED TO AXIAL AND CORONAL
<b>AXIAL</b>	DTI	3mm	0mm	None	Whole brain/parallel to AC/PC line
<b>AXIAL</b>	T2 Flair (tirm)	4mm	0mm	Strong	Whole brain/parallel to AC/PC line
<b>CORONAL</b>	T1 TIR	4mm	0mm	None	Whole brain coverage. Angle perpendicular to corpus callosum. Slices must be sufficient to cover from frontal sinus up to the line of occipital protuberance
<b>CORONAL</b>	T2 Flair (tirm)	3mm	0mm	Strong	Angle perpendicular to the long axis of the hippocampus. Cover the whole temporal lobe.
<b>CORONAL</b>	T2	2mm	0mm	None	Angle perpendicular to the long axis of the hippocampus. Cover the whole temporal lobe.
<b>CORONAL</b>	T2 spc ir	2mm	0mm	None	Angle perpendicular to the long axis of the hippocampus. Cover the whole temporal lobe.
<b>Inject Contrast</b>					
<b>AXIAL</b>	T2	4mm	0mm	None	Whole brain/parallel to AC/PC line
<b>AXIAL</b>	SWI	1.5mm	.3mm	None	Whole brain/parallel to AC/PC line

<b>SAG</b>	T1 MPRAGE 3D	1mm	0.5m m	None	Whole brain/parallel to midline of brain. MUST BE REROMATTED TO AXIAL and CORONAL
<b>AXIAL</b>	T1	4mm	0mm	None	Whole brain/parallel to AC/PC line

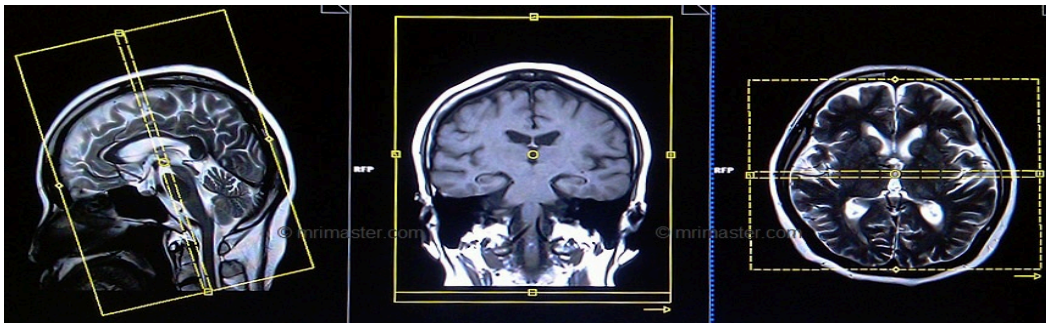
### SAG Image Planning:



### AXIAL Image Planning:



### COR Image Planning:



### Coronal oblique (seizure cuts)

