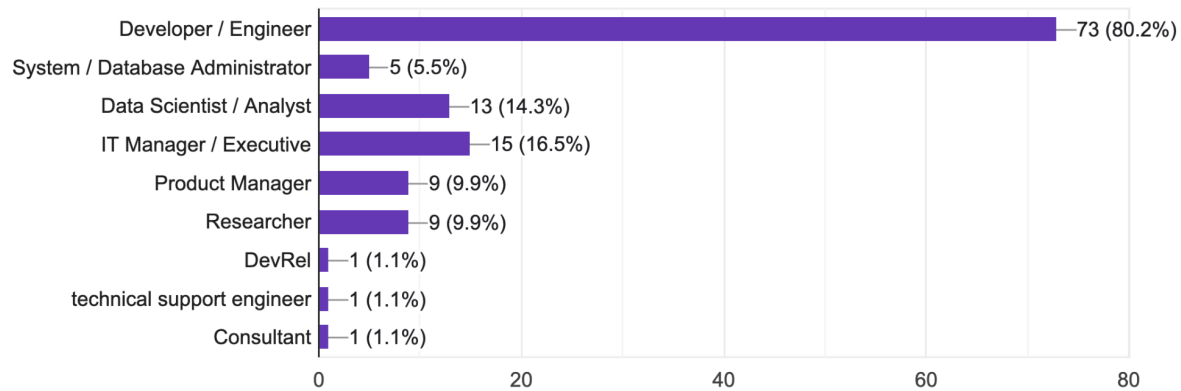


Search Community Survey - June 2025

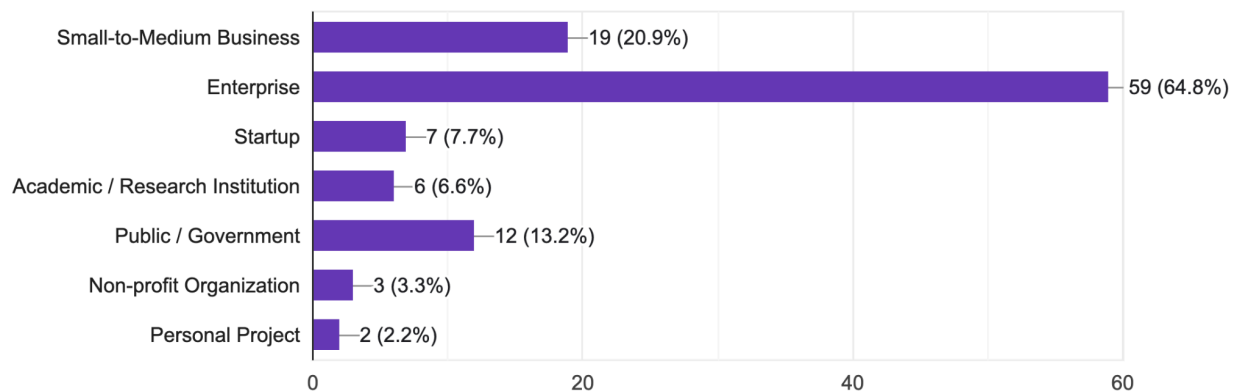
1. Role - What is your role in your organization? (select all that apply)

91 responses



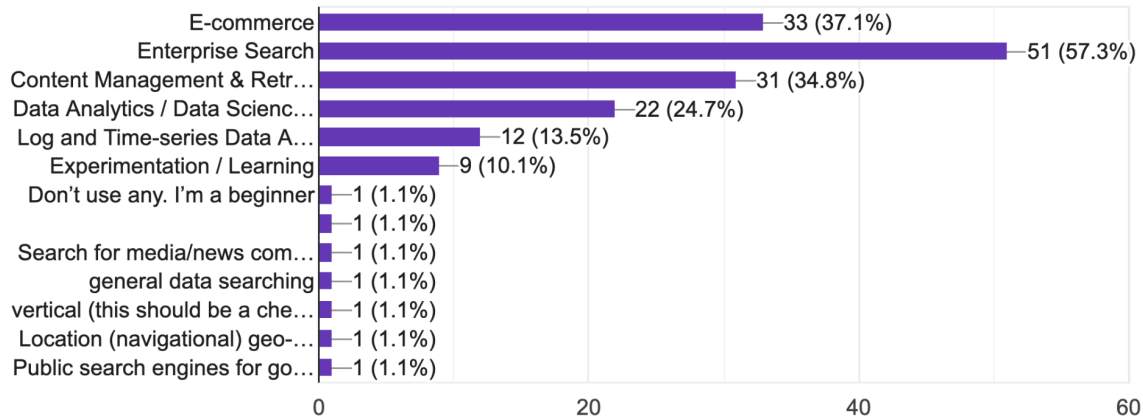
2. Organizational Context - What best describes your organizational context? (select all that apply)

91 responses



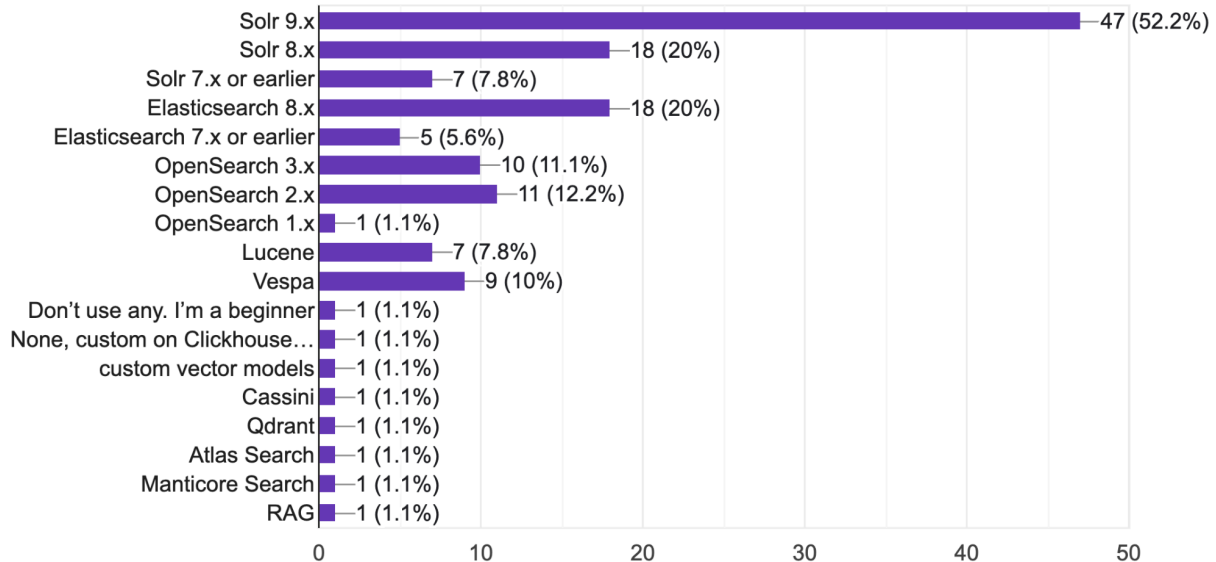
3. Primary Usage - What's your primary use case? (select all that apply)

89 responses



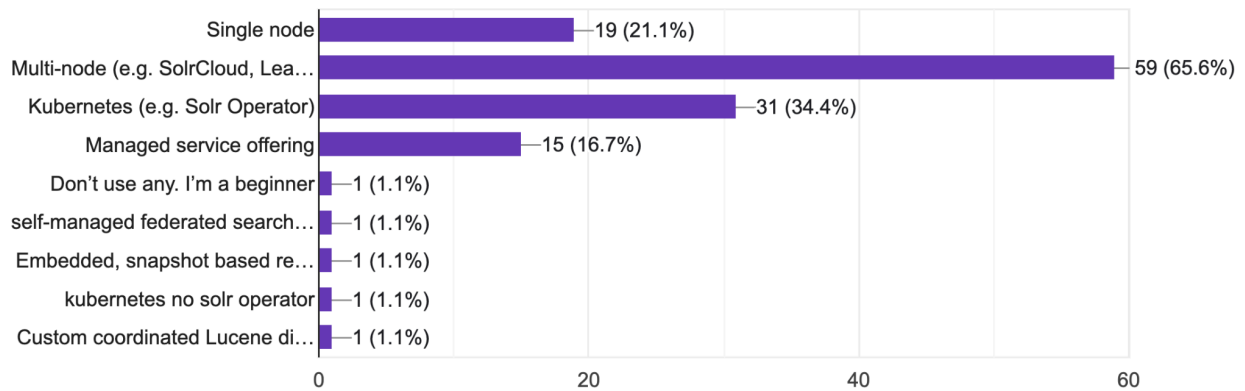
4. Platform - What search platform are you using? (select all that apply)

90 responses



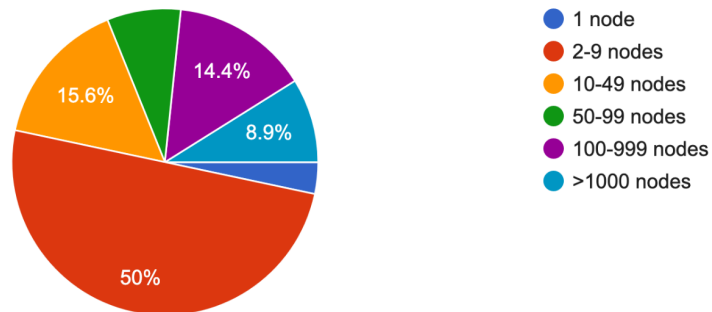
5. Deployment Topology - How do you deploy and manage your main search platform?

90 responses



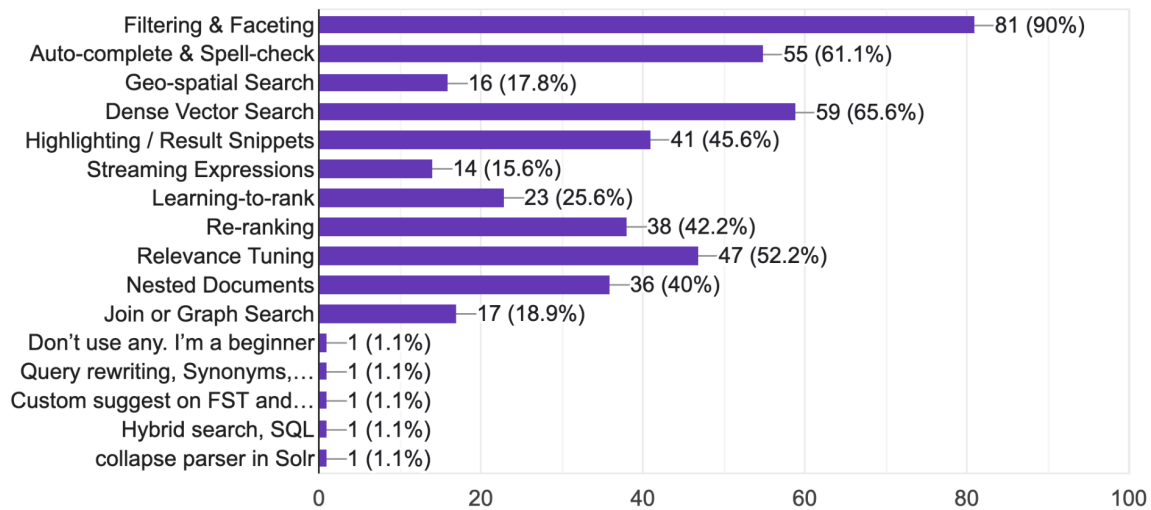
6. Scale - What is the scale of your deployment ("node" being a separate running process, i.e. separate JVM)?

90 responses



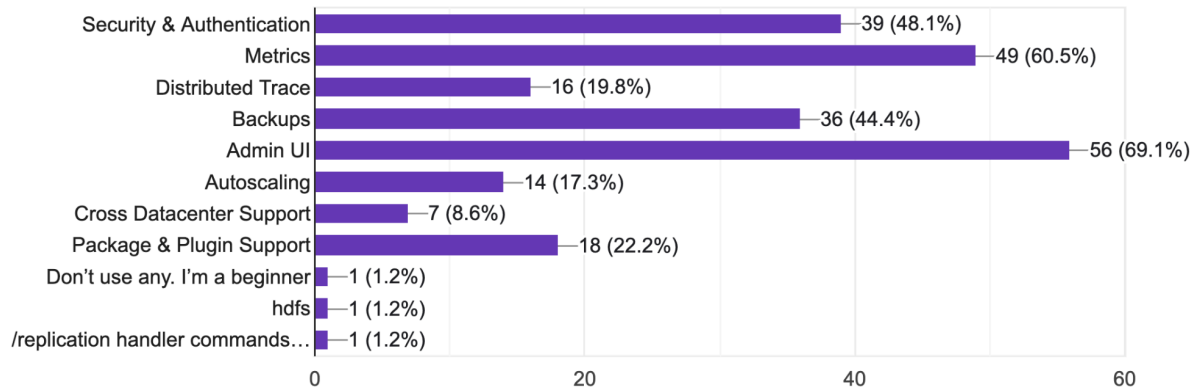
7. Features - Which search features do you regularly use? (select all that apply)

90 responses

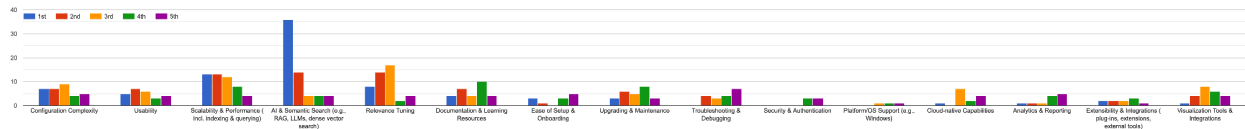


8. Administration - What administrative features do you use? (select all that apply)

81 responses

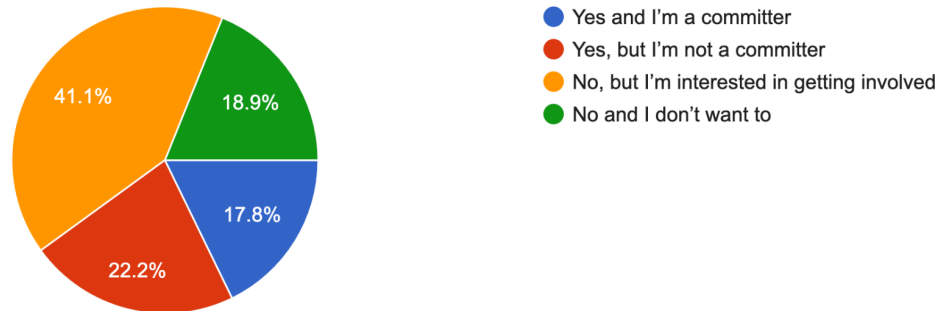


9. Innovation - What areas of search would you like to see improvements in? (select your top 5)



10. Contribution - Are you contributing to a search platform (code, website/blog, documentation, mailing list)?

90 responses



11. Barriers - What barriers, if any, have prevented you from contributing to a search platform? (select all that apply)

81 responses

