

Preparing Images for Printing

By default, PixInsight uses the default of **Adobe RGB 1998** colour profile. Sometimes, this colour profile will need to be changed to match that used on the intended printer/printing company.

Prerequisites

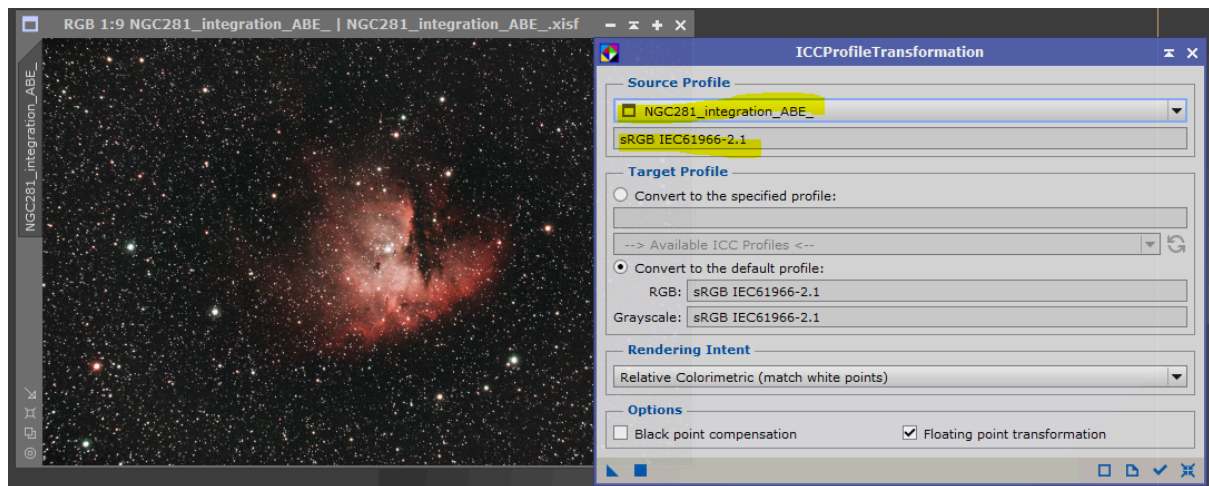
- Create a copy of a finished image to ensure no changes are saved on the final picture.
- Open the copy of the finished image created from one of the processing workflows.

ICCProfileTransformation

If there is a need to convert to a different colour profile, this tool will perform that function.

Note that an appropriate ICC may need to be installed/imported first.

- Open the tool and reset it.
- Change the image view to that of the finished image.
- This will then show which colour profile is currently being used.

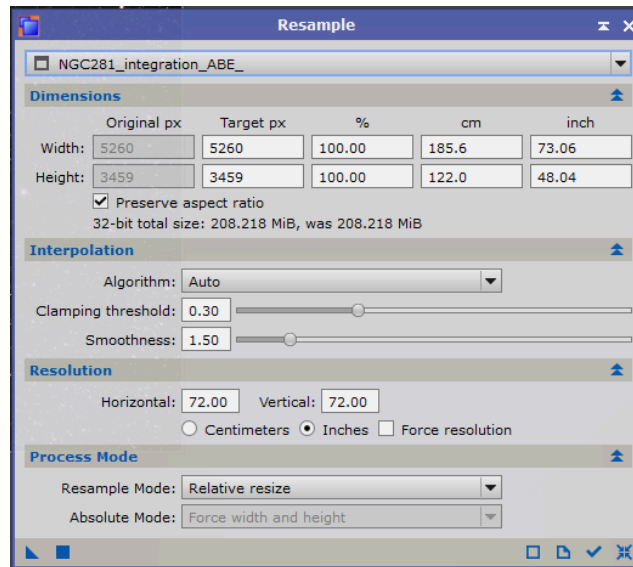


- In this instance, the **sRGB IEC61966-2.1** profile is currently being used, which is the standard profile for internet publication.
- Ensure the correct target profile is selected.
- Check **Black point compensation**.
- Check **Floating point transformation**.
- Apply the changes and close the tool.

Resample

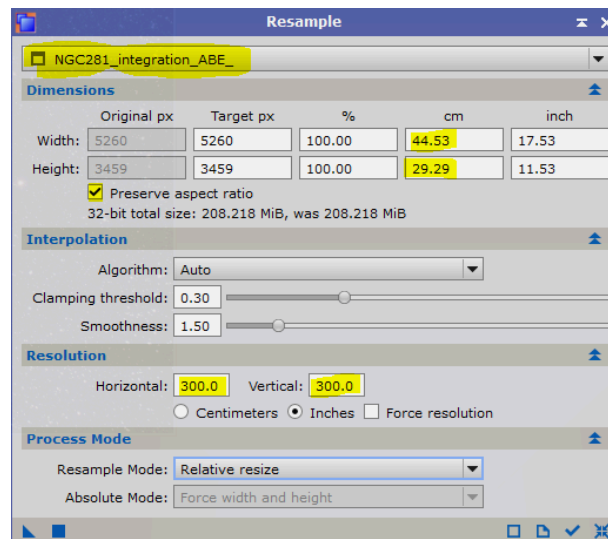
Images by default are produced at a resolution of 72dpi. However, to achieve the best print quality, resolution needs to be increased to 300dpi.

- Open the tool and reset it.
- Change the view to that of the image. Note the dimensions of the image.



Resolution

- Change the values for Horizontal and Vertical to 300.00 and tick **Force resolution**.
- Note the Dimensions change accordingly.



- Apply the changes to the image.
- Close the tool.

Saving

- Once the resolution has been amended, the image can be saved ready for printing. The suggested format is a TIF file.
- Append the file name with “print” or similar, to distinguish it from other images.
- Make the following selections and enter information on the target etc. as appropriate.
- Click OK to save the image, ready for printing.

TIFF Options

Sample Format

☐ 8-bit unsigned integer

☒ 16-bit unsigned integer

☐ 32-bit unsigned integer

☐ 32-bit IEEE 754 floating point

☐ 64-bit IEEE 754 floating point

Compression

☒ None

☐ ZIP

☐ LZW - deprecated

Embedded Data

☒ ICC Profile

Miscellaneous Options

☐ Planar organization

☒ Associated alpha channel

☐ Premultiplied alpha channel

Image Description

Image Copyright

Software Description

PixInsight 1.8.8-6 / PCL 2.4.0