


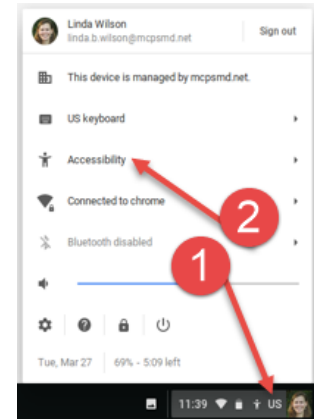
Vision Accessibility Features on the Chromebook

These features make the Chromebook screen easier to see.


Finding the Accessibility Features

Click on the lower right hand corner of your screen and choose “Accessibility.”

(Note: If “Accessibility” is not listed, go to Settings  → Advanced, and scroll all the way to the bottom. Choose “Always show accessibility option in the system menu.”)



Enlarging and Magnification

	Enlarger	Magnifier
What it does	<ul style="list-style-type: none"> Makes the text on the screen larger. You can zoom to up to 500% The text will reflow the elements on screen so you don't need to scroll right and left. 	<ul style="list-style-type: none"> Zooms in Layout of the screen remains the same Scroll right and left by moving the cursor to the edge of the screen
Keyboard Shortcut	<ul style="list-style-type: none"> Control + and - Control 0 resets to default size 	<ul style="list-style-type: none"> Turn the feature on or off using the Accessibility menu Zoom in and out with ctrl-alt-brightness keys 

[Video describing these two features.](#)

Video comparing enlarge, magnify, and change screen resolution: [Making your Chromebook Easier to See](#) by the Google YouTube Channel.

Enlarge cursor


Choose “Large mouse cursor” from the accessibility menu.

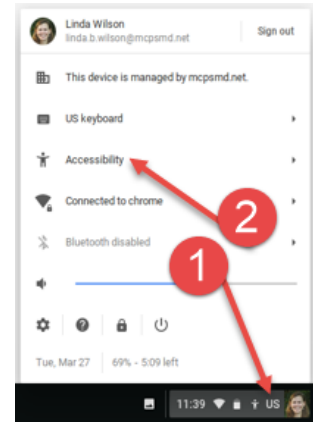
High contrast mode

Choose “High contrast mode” from the accessibility menu.

Mouse and cursor settings

You can make your mouse cursor larger and highlight the mouse cursor with a red circle.

1. From the accessibility menu, choose the gear icon  to go to “More accessibility settings.”
2. Click “Manage accessibility features.”
3. Scroll down to “Mouse and touchpad.”



See also

[Google's Accessibility Help Page](https://www.google.com/accessibility/help/)