

Primo - Aeon integration at UCSC

The integration from Primo to Aeon relies on identifying items within Special Collections locations defined in Alma. This is accomplished with the “Service Availability Rules” applied to the Aeon “General Electronic Service” in Alma. To see these in Alma, go to Configuration -> Fulfillment -> General Electronic Services.

The screenshot shows the Alma Configuration interface for the 'AEON' service. The page is titled 'Service Details' and includes a 'Cancel' button and a 'Save' button. The service is currently set to 'Active'. The 'Service Code' is 'AEON' and the 'Service Name' is 'AEON'. The 'Service Description' is empty. The 'Public Name' is 'Special Collections Request Form'. The 'Public Note' is empty. The 'Is this a Document Delivery/ILL service?' is set to 'Yes'. The 'Display Location' is 'Getit & How To Getit'. The 'URL Template' is 'https://aeon.library.ucsc.edu/Logon/?Action=10&Form=30&ItemTitle={rft.title}&author={rft.au}&ItemPlace={rft.pub}&ItemEdition={rft.edition}&Ref'. The 'Enable without login' is set to 'Yes', 'Item Level' is 'Yes', and 'Disable service' is 'Never'. There are four radio button options for 'Disable service': 'When resource is owned by the campus', 'When resource is owned by the campus and available', 'When resource is owned by the institution', and 'When resource is owned by the institution and available'. The ExLibris logo is in the bottom left corner, and the copyright notice '© Ex Libris, a ProQuest Company, 2020' is in the bottom right corner.

< Back to Alma Alma Configuration

< Service Details Cancel Save

AEON

Service Code AEON
Service Description -

Service Details Service Availability Rules

Active Active

Service Code * AEON

Service Name * AEON

Service Description

Public Name

Public Note

Is this a Document Delivery/ILL service? Yes No

Display Location *

URL Template *

Enable without login Yes No

Item Level Yes No

Disable service Never

When resource is owned by the campus

When resource is owned by the campus and available

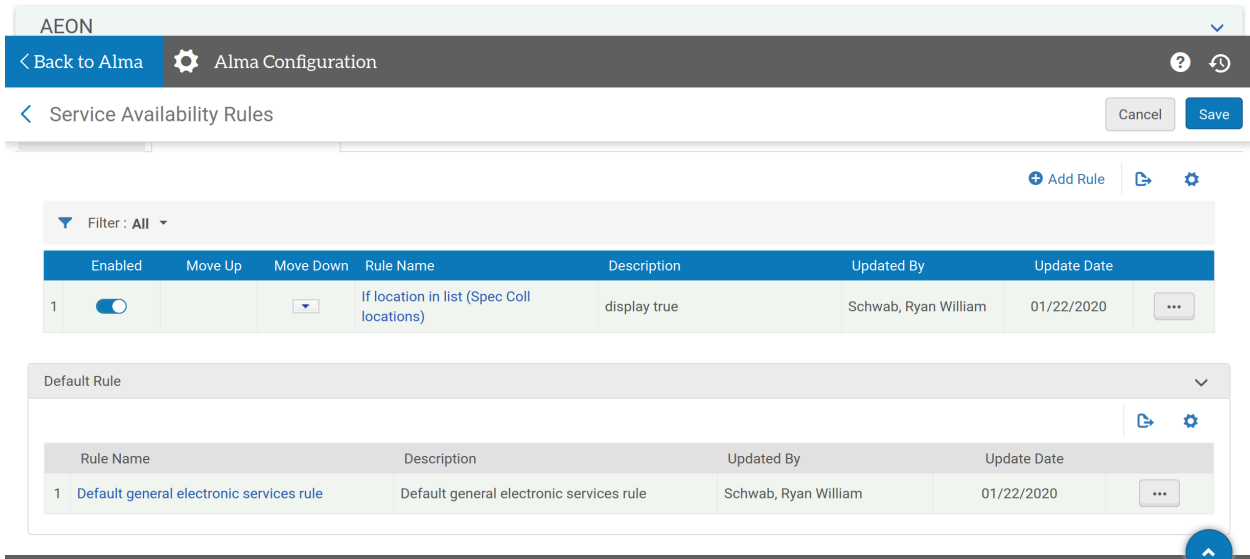
When resource is owned by the institution

When resource is owned by the institution and available

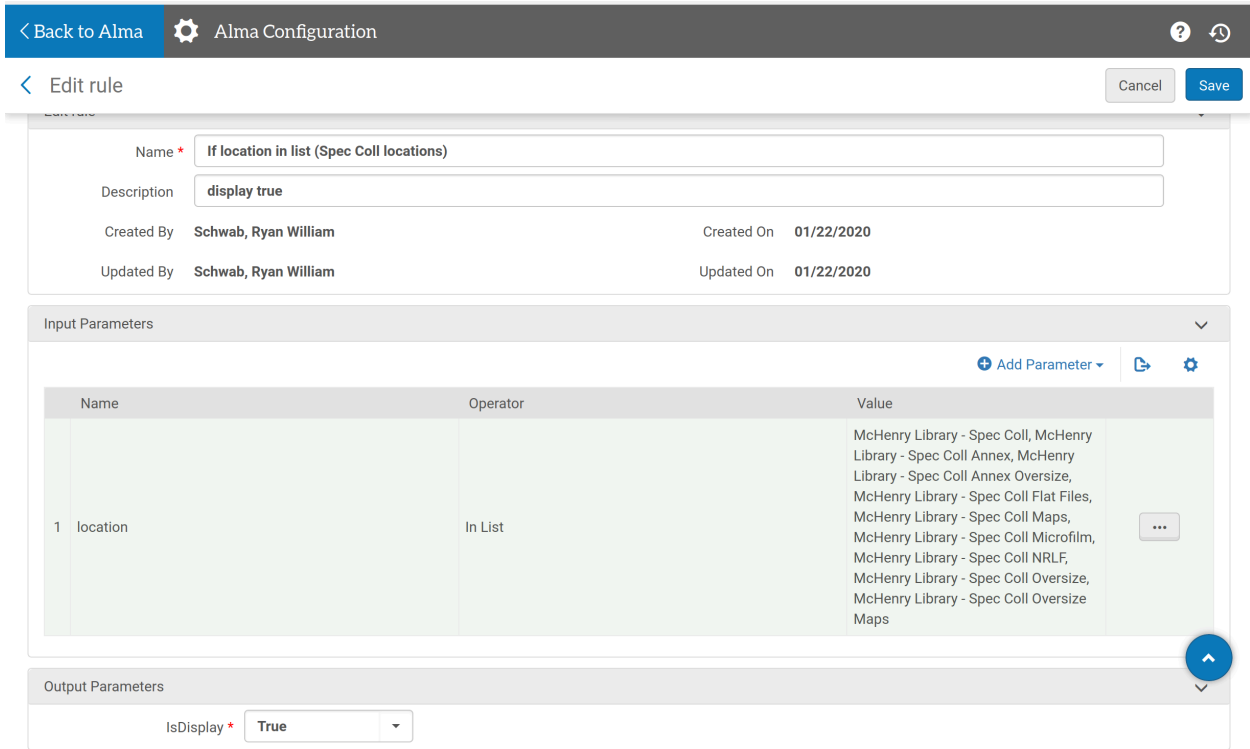
The GES relies on standard Open-URL parameters to send the metadata to Aeon. This can be seen in the “URL Template” field in the screenshot above.

Service Availability Rules

The Service Availability Rules ensure this GES is only shown on items that can be requested through Aeon. Below is a screenshot of the Service Availability Rules tab for the Aeon GES.



There are only two rules, the first tells Primo to show the Aeon link when the item is within SPC locations. Screenshot:



The second rule is the default rule, and its set to false. The logic thus goes “if this item is in a Special Collections location, show the GES. In all other cases, do not show the GES.”:

< Back to Alma Alma Configuration ? ↻

< Edit rule Cancel Save

Edit rule

Name * Default general electronic services rule

Description Default general electronic services rule

Created By Implementer, Ex Libris Created On 07/12/2018

Updated By Schwab, Ryan William Updated On 01/22/2020

Output Parameters

IsDisplay * False

Previous configuration

Before the January 2020 Alma update, item-level GES were not actually supported by Alma. Even though you could designate a GES as an item-level GES, it wouldn't actually make item-level metadata available.

The workaround to that problem was a little complex, and involved placing the Aeon GES on all records and then using javascript to selectively hide it. The javascript accomplished this by waiting for the record to load in Primo, then searching the metadata for the Special Collections locations, and hiding the GES with CSS if it identified one of those locations.

With the January update, Alma finally allowed for use of item-level metadata, and thus the Aeon integration could be configured entirely within the Alma configuration screens as described above.