



Welcome to **Mapping HERizons: #AccelerateAction for Women's Spaces**

This International Women's Month, we are taking action to amplify and expand the visibility of women's spaces across the country. Through collaborative mapping, we will use OpenStreetMap (OSM) and local knowledge to document essential spaces such as maternity clinics, birthing centers, VAWC offices, playgrounds, and public markets—places that play a vital role in women's daily lives.

What to Expect:

- An introduction to open mapping and its impact on gender-responsive urban planning
- Hands-on mapping activities using OSM tools and local knowledge
- A discussion on the challenges and opportunities in mapping women's spaces

Expected Outcomes:

Participants will leave with:

- Gain practical skills in using open mapping tools to document women's spaces
- Understand the importance of open spatial data in advocating for gender-inclusive infrastructure
- Contribute valuable spatial data that supports safer and more inclusive communities

Schedule:

March 10, 2025. 2:30PM - 5:00PM

Meeting Link:

Join Zoom Meeting

<https://up-edu.zoom.us/j/97807529208?pwd=ZI93aofbBplpOTysKmYYjWwaUUIWku.1>

Meeting ID: 978 0752 9208

Passcode: iwdxupriym

Program of Activities

Mapping HERizons on Women's Spaces



2:00 - 2:30	Welcoming Remarks (UPRI YouthMappers)
2:30 - 2:35	Introduction to International Women's Day: #AccelerateAction
2:35 - 2:50	Guest Speaker #1: Arnalíe Vicario
2:50 - 3:05	Guest Speaker #2: Heather Leason
3:05 - 3:15	Ice Breaker
3:15 - 3:45	Intro to OSM and Feature Tagging
3:45 - 4:00	Intro to Mapping of Women's Spaces
4:00 - 4:50	Mapathon Proper
4:50 - 5:00	Synthesis and Closing

Materials:

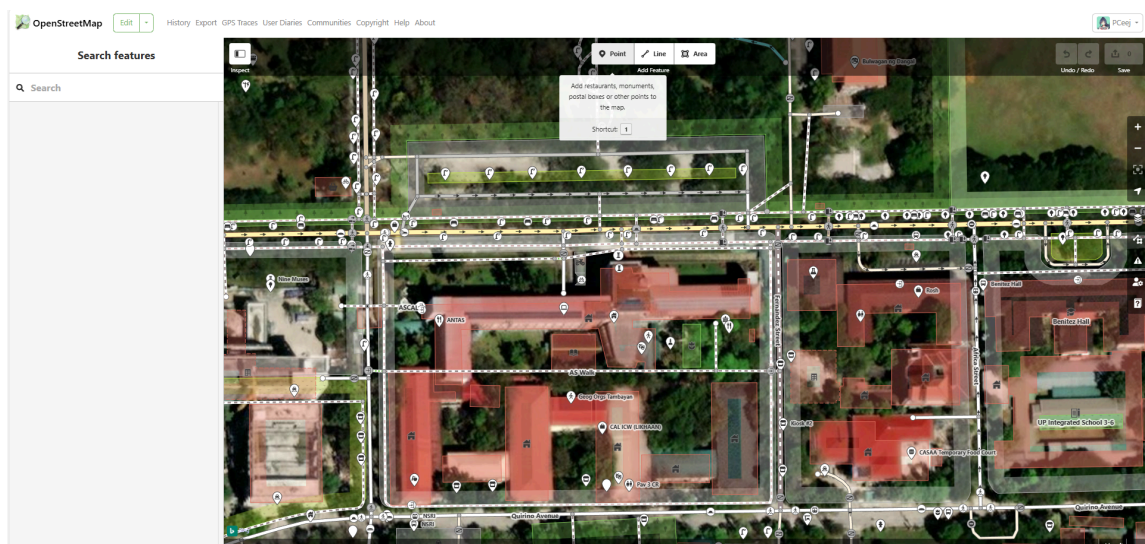
- **Laptop** for mapping
- **OpenStreetMap** account

Instructions:

A. Editing with OSM iD editor

Throughout the session, we will be utilizing iD editor within the OpenStreetMap platform, placing in points or areas to locate the following:

1. Open OSM in your browser and log-in
2. Proceed to edit with iD Editor, which you can access from the top-left part of the screen.
3. The features that we will be adding are either a point or area, which you can see at the top-middle part of your screen.





4. Listed below are the features that we will be mapping for this program. You may search for the value in the **Search Feature Type** or input the Key and Value in your tags list

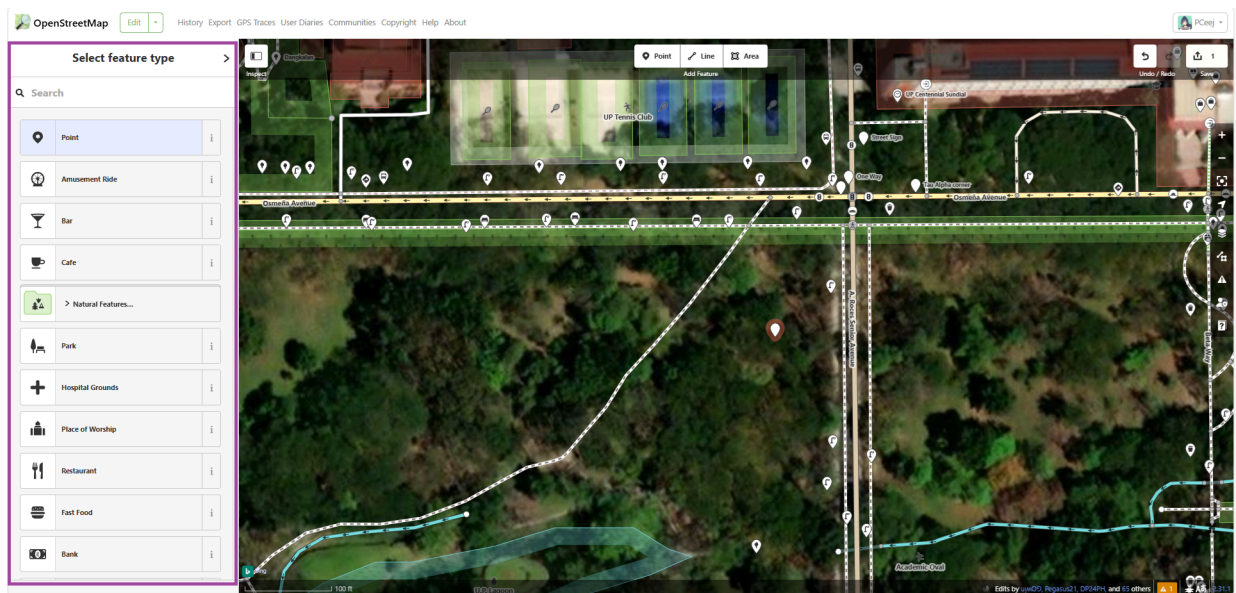
Feature	Key	Value	Description
VAWC Desks	amenity social_facility:for	social_facility women	amenity=social_facility social_facility:for=women <i>Include both in your tags</i>
Barangay Health Stations or Barangay Health Centers	amenity	health_post	amenity=health_post
Lactation Stations	baby_feeding	yes /no room	baby_feeding=yes/no baby_feeding=room <i>Secondary tag, only indicates whether there are available stations within.</i>
Birthing Centers	healthcare	birthing_centre	healthcare=birthing_centre Can be a point or an area
Midwife	healthcare	midwife	healthcare=midwife
Playgrounds	leisure	playground	leisure=playground Can be a point or an area
Daycare	amenity social_facility:for	social_facility child	amenity=social_facility social_facility:for=women <i>Include both in your tags</i>
Kindergarten	amenity	kindergarten	amenity=kindergarten Can be a point or an area
Schools	amenity	school	amenity=school Can be a point or an area
Fitness Centers	leisure	fitness_centre	leisure=fitness_centre
Sports Center	leisure	sports_centre	leisure=sports_centre <i>You may include the sport in the tag as well, example: sport=yoga</i>
Beauty Shop, Spa,	shop	beauty	shop=beauty



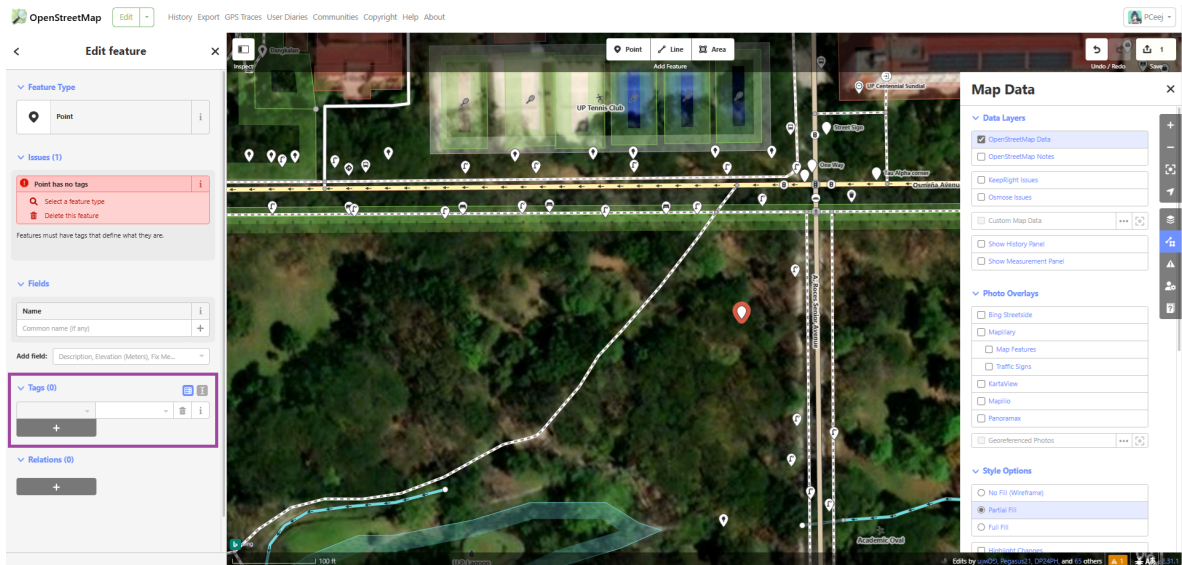
Nail Salon etc.			
Hair Salon	shop	hairdresser	shop=hairdresser
Groceries	shop	supermarket	shop=supermarket
Street Lights	highway	street_lamp	highway=street_lamp

You may use your **local knowledge**, or **other tools within OSM** such as **Mapillary** and **KartaView** to identify these features. The next steps show how you can tag them correctly and how Mapillary and KartaView can help you search for different features!

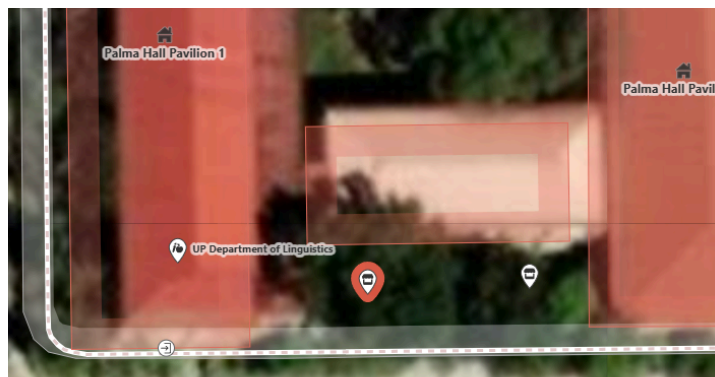
5. There are two ways to tag the features,
 - a. place the feature (i.e Point) in its correct location, this leads to the “**Select Feature Type**” tab appearing on the left side of your screen where you may **search for the amenity tag** described below. *This is similar to our process of tagging buildings!*



- b. Second option - You may also edit through the tags list located in the bottom left part of your screen. There are two ways to view this, which you can switch through the buttons located at the right side of the highlighted box
 - As **list**, the left side of the column is called **key**, while the right side is called **tag**
 - As **text**, you may **copy the recommended tags directly** into the box.



Example: Kiosk feature, here's how it may appear using the second option



Tags (1)

shop

kiosk

+

List form

Tags (1)

shop=kiosk

Text form

B. Editing using Mapillary or KartaView

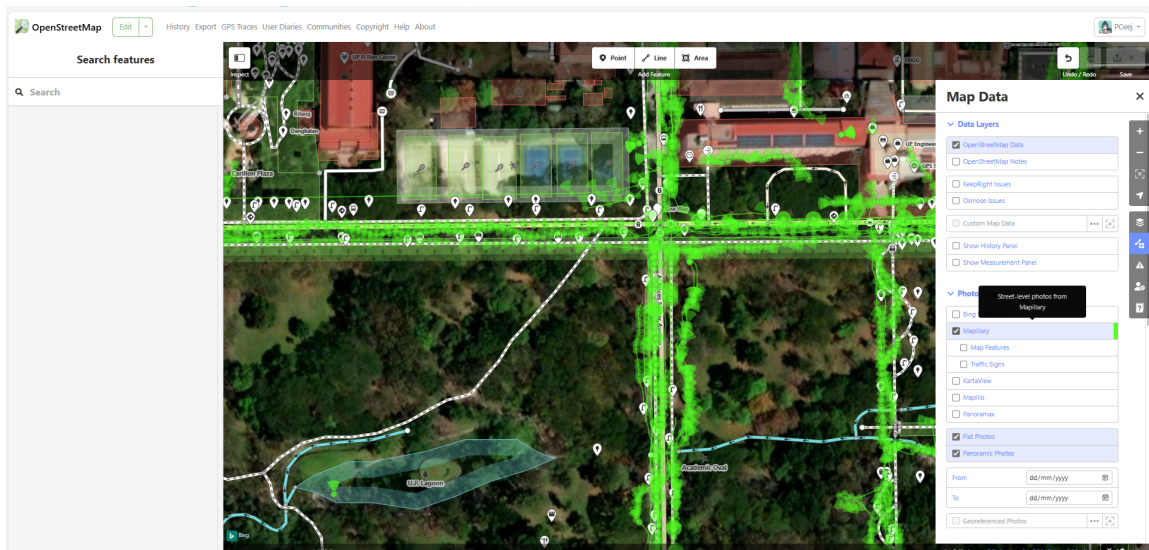
- OPTIONAL: How to load Mapillary or KartaView
Mapillary and KartaView are street-level imagery applications that allow us to help identify possible features that are present on the ground. This can also be used as an aid to help validate remotely mapped objects.



Step 1: Access the **Map Data** tab at the right part of your screen, you can also do so by pressing the shortcut key **U**



Step 2: At the Photo Overlays tab, tick either the boxes of Mapillary or KartaView, your screen should look similar to the screenshot below if there are available street-level image contributions from your area.



Step 3: Click on a point across the map, this should pop an image overlay at the bottom-left part of your screen. You can now use this to



Thank you, and we look forward to seeing you in the event! 😊 If you have additional questions, please do not hesitate to contact us through our group chats.